

12/2006

Mercato
Mercati nazionali

5.10.14.2



PARMA 2006

CAMERA DI COMMERCIO DI PARMA

Categoria: SUINI VIVI

Prezzi: (Franco Partenza) Per Kg peso vivo - IVA esclusa

di Cosmino Giovanni Basile

SETTIMANE	SUINI D'ALLEVAMENTO (€/Kg)							
	< a 15	da 25	da 30	da 40	da 50	da 65	da 80	da 100
07/01/2006	3,02	2,06	1,81	1,49	1,36	1,22	1,21	1,16
14/01/2006	3,07	2,11	1,85	1,52	1,38	1,22	1,21	1,16
21/01/2006	3,18	2,22	1,95	1,61	1,45	1,27	1,26	1,21
28/01/2006	3,28	2,32	2,05	1,69	1,51	1,33	1,30	1,25
04/02/2006	3,38	2,42	2,15	1,79	1,59	1,39	1,35	1,30
11/02/2006	3,48	2,52	2,25	1,89	1,68	1,47	1,40	1,35
18/02/2006	3,58	2,62	2,35	1,99	1,77	1,54	1,45	1,35
25/02/2006	3,67	2,61	2,44	2,07	1,83	1,59	1,49	1,35
04/03/2006	3,76	2,80	2,52	2,15	1,90	1,62	1,49	1,35
11/03/2006	3,82	2,86	2,58	2,22	1,97	1,65	1,49	1,35
18/03/2006	3,86	2,90	2,62	2,26	2,02	1,68	1,49	1,35
25/03/2006	3,88	2,92	2,65	2,30	2,05	1,71	1,49	1,35
01/04/2006	3,88	2,92	2,67	2,34	2,09	1,74	1,49	1,35
08/04/2006	3,88	2,92	2,67	2,35	2,10	1,75	1,49	1,35
15/04/2006	3,88	2,92	2,67	2,36	2,11	1,76	1,49	1,35
22/04/2006	3,88	2,92	2,67	2,36	2,11	1,76	1,49	1,35
29/04/2006	3,85	2,89	2,65	2,35	2,11	1,76	1,49	1,35
06/05/2006	3,80	2,85	2,62	2,33	2,09	1,76	1,49	1,35
13/05/2006	3,75	2,80	2,57	2,31	2,09	1,76	1,47	1,33
20/05/2006	3,69	2,74	2,52	2,27	2,05	1,74	1,45	1,31
27/05/2006	3,63	2,69	2,51	2,26	2,04	1,74	1,45	1,31
03/06/2006	3,60	2,67	2,50	2,23	2,02	1,74	1,45	1,31
10/06/2006	3,57	2,64	2,47	2,21	2,00	1,74	1,45	1,31
17/06/2006	3,54	2,62	2,45	2,19	2,00	1,75	1,48	1,34
24/06/2006	3,52	2,60	2,43	2,18	2,00	1,76	1,50	1,36
01/07/2006	3,50	2,58	2,41	2,17	2,00	1,76	1,50	1,36
09/07/2006	3,46	2,54	2,37	2,15	2,00	1,76	1,50	1,36
16/07/2006	3,43	2,52	2,35	2,14	2,00	1,76	1,50	1,36
23/07/2006	3,40	2,49	2,33	2,13	2,00	1,76	1,50	1,36
30/07/2006	3,37	2,46	2,31	2,13	2,00	1,76	1,52	1,39
06/08/2006	3,34	2,43	2,29	2,13	2,00	1,76	1,52	1,39
13/08/2006	3,32	2,41	2,27	2,13	2,00	1,76	1,52	1,39
20/08/2006	3,30	2,39	2,24	2,12	2,00	1,76	1,52	1,39
27/08/2006	3,28	2,37	2,22	2,10	1,980	1,76	1,52	1,39
03/09/2006	3,25	2,34	2,19	2,06	1,940	1,73	1,52	1,39
10/09/2006	3,19	2,29	2,15	2,02	1,910	1,71	1,52	1,39
17/09/2006	3,14	2,24	2,10	1,97	1,860	1,68	1,52	1,39
24/09/2006	3,14	2,22	2,07	1,93	1,820	1,66	1,52	1,39
30/09/2006	3,14	2,22	2,05	1,91	1,810	1,65	1,52	1,39
07/10/2006	3,14	2,19	2,03	1,86	1,760	1,60	1,52	1,39
14/10/2006	3,14	2,19	2,01	1,83	1,730	1,56	1,52	1,39
21/10/2006	3,14	2,19	1,99	1,79	1,67	1,50	1,49	1,37
28/10/2006	3,14	2,19	1,98	1,76	1,63	1,46	1,46	1,34
04/11/2006	3,14	2,19	1,98	1,74	1,60	1,43	1,43	1,31
11/11/2006	3,14	2,19	1,98	1,72	1,58	1,41	1,41	1,31
18/11/2006	3,14	2,19	1,98	1,70	1,56	1,40	1,40	1,35
25/11/2006	3,14	2,19	1,98	1,69	1,55	1,37	1,37	1,32
02/12/2006	3,14	2,19	1,98	1,69	1,55	1,37	1,37	1,32
09/12/2006	3,14	2,19	1,98	1,69	1,55	1,37	1,37	1,32
16/12/2006	3,19	2,25	2,02	1,69	1,53	1,34	1,34	1,29
23/12/2006	3,25	2,30	2,04	1,69	1,53	1,34	1,34	1,29
30/12/2006	3,31	2,36	2,07	1,71	1,53	1,34	1,34	1,29
MEDIA	3,42	2,48	2,27	2,01	1,83	1,60	1,45	1,34

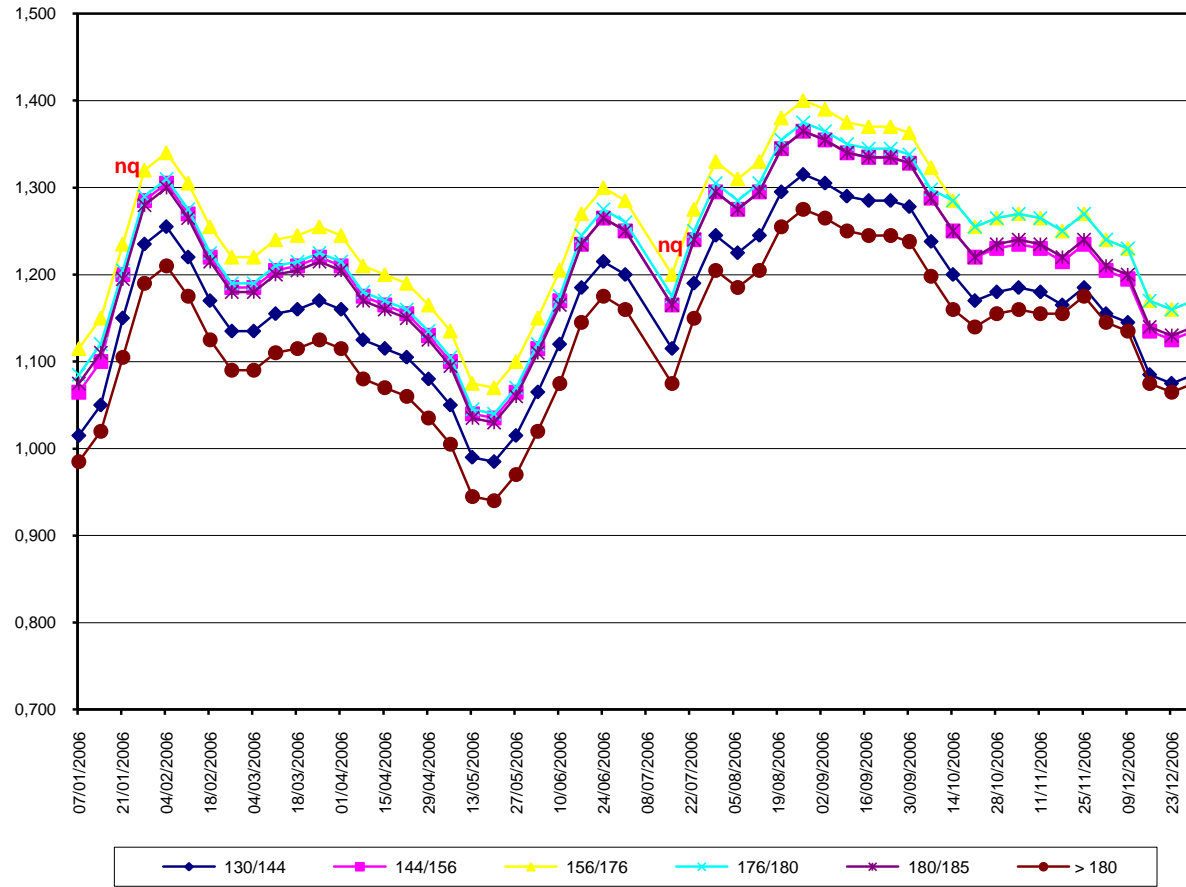
nq = non quotati

PARMA 2006

SETTIMANE	SUINI DA MACELLO (€/Kg)							
	90/115	115/130	130/144	144/156	156/176	176/180	180/185	> 180
07/01/2006	nq	nq	1,015	1,065	1,115	1,085	1,075	0,985
14/01/2006	nq	nq	1,050	1,100	1,150	1,120	1,110	1,020
21/01/2006	nq	nq	1,150	1,200	1,235	1,205	1,195	1,105
28/01/2006	nq	nq	1,235	1,285	1,320	1,290	1,280	1,190
04/02/2006	nq	nq	1,255	1,305	1,340	1,310	1,300	1,210
11/02/2006	nq	nq	1,220	1,270	1,305	1,275	1,265	1,175
18/02/2006	nq	nq	1,170	1,220	1,255	1,225	1,215	1,125
25/02/2006	nq	nq	1,135	1,185	1,220	1,190	1,180	1,090
04/03/2006	nq	nq	1,135	1,185	1,220	1,190	1,180	1,090
11/03/2006	nq	nq	1,155	1,205	1,240	1,210	1,200	1,110
18/03/2006	nq	nq	1,160	1,210	1,245	1,215	1,205	1,115
25/03/2006	nq	nq	1,170	1,220	1,255	1,225	1,215	1,125
01/04/2006	nq	nq	1,160	1,210	1,245	1,215	1,205	1,115
08/04/2006	nq	nq	1,125	1,175	1,210	1,180	1,170	1,080
15/04/2006	nq	nq	1,115	1,165	1,200	1,170	1,160	1,070
22/04/2006	nq	nq	1,105	1,155	1,190	1,160	1,150	1,060
29/04/2006	nq	nq	1,080	1,130	1,165	1,135	1,125	1,035
06/05/2006	nq	nq	1,050	1,100	1,135	1,105	1,095	1,005
13/05/2006	nq	nq	0,990	1,040	1,075	1,045	1,035	0,945
20/05/2006	nq	nq	0,985	1,035	1,070	1,040	1,030	0,940
27/05/2006	nq	nq	1,015	1,065	1,100	1,070	1,060	0,970
03/06/2006	nq	nq	1,065	1,115	1,150	1,120	1,110	1,020
10/06/2006	nq	nq	1,120	1,170	1,205	1,175	1,165	1,075
17/06/2006	nq	nq	1,185	1,235	1,270	1,245	1,235	1,145
24/06/2006	nq	nq	1,215	1,265	1,300	1,275	1,265	1,175
01/07/2006	nq	nq	1,200	1,250	1,285	1,260	1,250	1,160
16/07/2006	nq	nq	1,115	1,165	1,200	1,175	1,165	1,075
23/07/2006	nq	nq	1,190	1,240	1,275	1,250	1,240	1,150
30/07/2006	nq	nq	1,245	1,295	1,330	1,305	1,295	1,205
06/08/2006	nq	nq	1,225	1,275	1,310	1,285	1,275	1,185
13/08/2006	nq	nq	1,245	1,295	1,330	1,305	1,295	1,205
20/08/2006	nq	nq	1,295	1,345	1,380	1,355	1,345	1,255
27/08/2006	nq	nq	1,315	1,365	1,400	1,375	1,365	1,275
03/09/2006	nq	nq	1,305	1,355	1,390	1,365	1,355	1,265
10/09/2006	nq	nq	1,290	1,340	1,375	1,350	1,340	1,250
17/09/2006	nq	nq	1,285	1,335	1,370	1,345	1,335	1,245
24/09/2006	nq	nq	1,285	1,335	1,370	1,345	1,335	1,245
30/09/2006	nq	nq	1,278	1,328	1,363	1,338	1,328	1,238
07/10/2006	nq	nq	1,238	1,288	1,323	1,298	1,288	1,198
14/10/2006	nq	nq	1,200	1,250	1,285	1,285	1,250	1,160
21/10/2006	nq	nq	1,170	1,220	1,255	1,255	1,220	1,140
28/10/2006	nq	nq	1,180	1,230	1,265	1,265	1,235	1,155
04/11/2006	nq	nq	1,185	1,235	1,270	1,270	1,240	1,160
11/11/2006	nq	nq	1,180	1,230	1,265	1,265	1,235	1,155
18/11/2006	nq	nq	1,165	1,215	1,250	1,250	1,220	1,155
25/11/2006	nq	nq	1,185	1,235	1,270	1,270	1,240	1,175
02/12/2006	nq	nq	1,155	1,205	1,240	1,240	1,210	1,145
09/12/2006	nq	nq	1,145	1,195	1,230	1,230	1,200	1,135
16/12/2006	nq	nq	1,085	1,135	1,170	1,170	1,140	1,075
23/12/2006	nq	nq	1,075	1,125	1,160	1,160	1,130	1,065
30/12/2006	nq	nq	1,085	1,135	1,170	1,170	1,140	1,075
MEDIA	nq	nq	1,164	1,214	1,250	1,229	1,214	1,128

nq = non quotati

PARMA 2006
SUINI DA MACELLO
 (Euro/Kg)



nq = non quotati

