



MILANO 2001

CAMERA DI COMMERCIO DI MILANO

Categoria: SUINI VIVI

Prezzi: (Franco Partenza) Per Kg peso vivo - IVA esclusa

di Cosmino Giovanni Basile

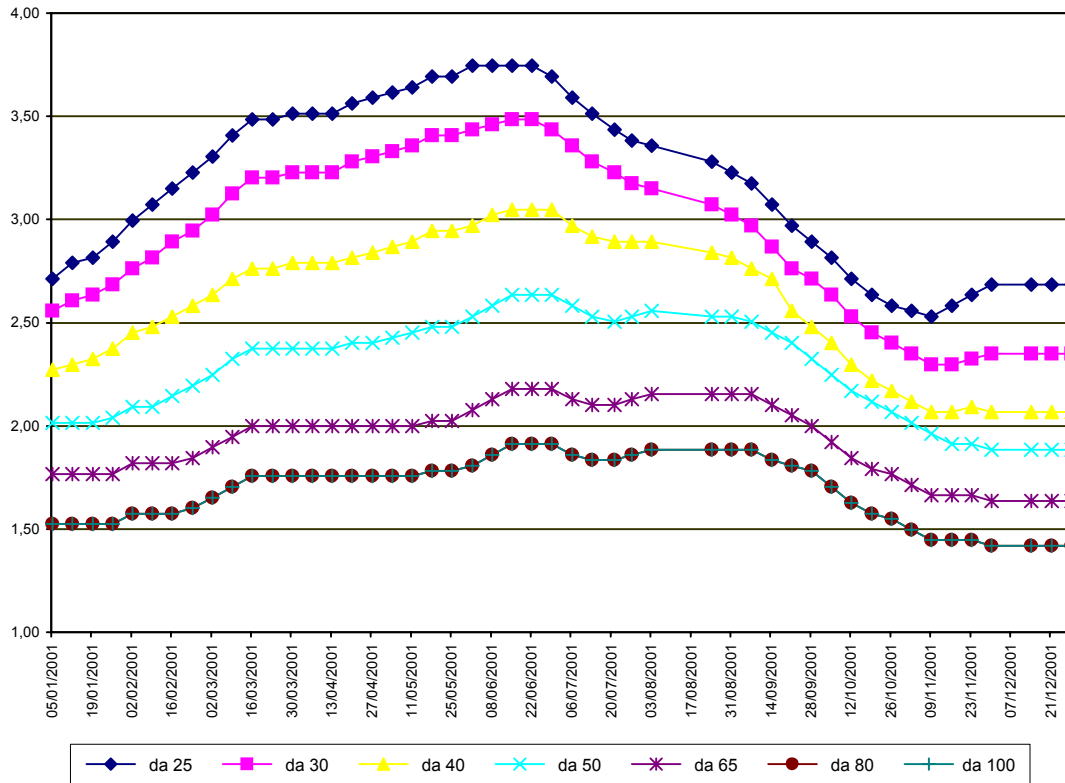
SETTIMANE	SUINI D'ALLEVAMENTO €/Kg)							
	< a 15	da 25	da 30	da 40	da 50	da 65	da 80	da 100
05/01/2001	3,15	2,71	2,56	2,27	2,01	1,77	1,52	1,52
12/01/2001	3,25	2,79	2,61	2,30	2,01	1,77	1,52	1,52
19/01/2001	3,28	2,81	2,63	2,32	2,01	1,77	1,52	1,52
26/01/2001	3,36	2,89	2,69	2,38	2,04	1,77	1,52	1,52
02/02/2001	3,46	3,00	2,76	2,45	2,09	1,82	1,58	1,58
09/02/2001	3,54	3,07	2,81	2,48	2,09	1,82	1,58	1,58
16/02/2001	3,62	3,15	2,89	2,53	2,14	1,82	1,58	1,58
23/02/2001	3,69	3,23	2,94	2,58	2,19	1,84	1,60	1,60
02/03/2001	3,77	3,31	3,02	2,63	2,25	1,90	1,65	1,65
09/03/2001	3,87	3,41	3,12	2,71	2,32	1,95	1,70	1,70
16/03/2001	3,95	3,49	3,20	2,76	2,38	2,00	1,76	1,76
23/03/2001	3,95	3,49	3,20	2,76	2,38	2,00	1,76	1,76
30/03/2001	3,98	3,51	3,23	2,79	2,38	2,00	1,76	1,76
06/04/2001	3,98	3,51	3,23	2,79	2,38	2,00	1,76	1,76
13/04/2001	3,98	3,51	3,23	2,79	2,38	2,00	1,76	1,76
20/04/2001	4,00	3,56	3,28	2,81	2,40	2,00	1,76	1,76
27/04/2001	4,00	3,59	3,31	2,84	2,40	2,00	1,76	1,76
04/05/2001	4,03	3,62	3,33	2,87	2,43	2,00	1,76	1,76
11/05/2001	4,08	3,64	3,36	2,89	2,45	2,00	1,76	1,76
18/05/2001	4,13	3,69	3,41	2,94	2,48	2,02	1,78	1,78
25/05/2001	4,13	3,69	3,41	2,94	2,48	2,02	1,78	1,78
01/06/2001	4,18	3,74	3,43	2,97	2,53	2,08	1,81	1,81
08/06/2001	4,18	3,74	3,46	3,02	2,58	2,13	1,86	1,86
15/06/2001	4,18	3,74	3,49	3,05	2,63	2,18	1,91	1,91
22/06/2001	4,18	3,74	3,49	3,05	2,63	2,18	1,91	1,91
29/06/2001	4,13	3,69	3,43	3,05	2,63	2,18	1,91	1,91
06/07/2001	4,03	3,59	3,36	2,97	2,58	2,13	1,86	1,86
13/07/2001	3,93	3,51	3,28	2,92	2,53	2,10	1,83	1,83
21/07/2001	3,82	3,43	3,23	2,89	2,50	2,10	1,83	1,83
27/07/2001	3,77	3,38	3,18	2,89	2,53	2,13	1,86	1,86
03/08/2001	3,72	3,36	3,15	2,89	2,56	2,15	1,89	1,89
24/08/2001	3,62	3,28	3,07	2,84	2,53	2,15	1,89	1,89
31/08/2001	3,56	3,23	3,02	2,81	2,53	2,15	1,89	1,89
07/09/2001	3,51	3,18	2,97	2,76	2,50	2,15	1,89	1,89
14/09/2001	3,41	3,07	2,87	2,71	2,45	2,10	1,83	1,83
21/09/2001	3,31	2,97	2,76	2,56	2,40	2,05	1,81	1,81
28/09/2001	3,25	2,89	2,71	2,48	2,32	2,00	1,78	1,78
05/10/2001	3,18	2,81	2,63	2,40	2,25	1,92	1,70	1,70
12/10/2001	3,07	2,71	2,53	2,30	2,17	1,84	1,63	1,63
19/10/2001	3,07	2,63	2,45	2,22	2,12	1,79	1,58	1,58
26/10/2001	3,05	2,58	2,40	2,17	2,07	1,77	1,55	1,55
02/11/2001	3,05	2,56	2,35	2,12	2,01	1,71	1,50	1,50
09/11/2001	3,05	2,53	2,30	2,07	1,96	1,66	1,45	1,45
16/11/2001	3,10	2,58	2,30	2,07	1,91	1,66	1,45	1,45
23/11/2001	3,15	2,63	2,32	2,09	1,91	1,66	1,45	1,45
30/11/2001	3,20	2,69	2,35	2,07	1,89	1,64	1,42	1,42
14/12/2001	3,20	2,69	2,35	2,07	1,89	1,64	1,42	1,42
21/12/2001	3,20	2,69	2,35	2,07	1,89	1,64	1,42	1,42
28/12/2001	3,20	2,69	2,35	2,07	1,89	1,64	1,42	1,42
MEDIA	3,62	3,18	2,93	2,60	2,29	1,93	1,69	1,69

nq = non quotati

MILANO 2001

SETTIMANE	SUINI DA MACELLO (€/Kg)						
	90/115	da 115	da 130	da 144	da 156	da 176	> 176
05/01/2001	1,534	1,425	1,446	1,513	1,539	1,539	1,431
12/01/2001	1,487	1,379	1,400	1,467	1,493	1,493	1,384
19/01/2001	1,446	1,356	1,387	1,443	1,469	1,469	1,361
26/01/2001	1,513	1,425	1,456	1,513	1,539	1,539	1,431
02/02/2001	1,529	1,441	1,472	1,529	1,555	1,555	1,446
09/02/2001	1,529	1,436	1,467	1,524	1,549	1,549	1,441
16/02/2001	1,555	1,451	1,482	1,539	1,565	1,565	1,456
23/02/2001	1,596	1,493	1,524	1,580	1,606	1,606	1,498
02/03/2001	1,647	1,513	1,544	1,601	1,627	1,627	1,518
09/03/2001	1,725	1,591	1,622	1,678	1,689	1,689	1,580
16/03/2001	1,766	1,632	1,663	1,720	1,730	1,730	1,622
23/03/2001	1,704	1,570	1,601	1,658	1,668	1,668	1,560
30/03/2001	1,637	1,508	1,539	1,596	1,606	1,606	1,498
06/04/2001	1,586	1,451	1,482	1,539	1,560	1,560	1,451
13/04/2001	1,596	1,462	1,482	1,549	1,570	1,570	1,462
20/04/2001	1,596	1,467	1,487	1,555	1,575	1,575	1,467
27/04/2001	1,596	1,467	1,487	1,555	1,575	1,575	1,467
04/05/2001	1,560	1,441	1,462	1,529	1,549	1,549	1,441
11/05/2001	1,534	1,418	1,438	1,505	1,526	1,526	1,418
18/05/2001	1,508	1,394	1,415	1,482	1,503	1,503	1,394
25/05/2001	1,487	1,376	1,397	1,464	1,485	1,485	1,376
01/06/2001	1,487	1,376	1,397	1,464	1,485	1,485	1,376
08/06/2001	1,524	1,413	1,433	1,500	1,521	1,521	1,413
15/06/2001	1,611	1,498	1,518	1,586	1,606	1,606	1,498
22/06/2001	1,611	1,508	1,529	1,596	1,617	1,617	1,508
29/06/2001	1,560	1,462	1,482	1,549	1,570	1,570	1,462
06/07/2001	1,477	1,379	1,400	1,467	1,487	1,487	1,379
13/07/2001	1,462	1,363	1,384	1,451	1,472	1,472	1,363
21/07/2001	1,529	1,431	1,451	1,518	1,539	1,539	1,431
27/07/2001	1,601	1,503	1,524	1,591	1,611	1,611	1,503
03/08/2001	1,637	1,539	1,560	1,627	1,647	1,647	1,539
24/08/2001	1,637	1,524	1,544	1,611	1,632	1,632	1,524
31/08/2001	1,637	1,524	1,544	1,611	1,632	1,632	1,524
07/09/2001	1,653	1,539	1,560	1,627	1,647	1,647	1,539
14/09/2001	1,637	1,524	1,544	1,611	1,632	1,632	1,524
21/09/2001	1,617	1,503	1,524	1,591	1,611	1,611	1,503
28/09/2001	1,601	1,490	1,511	1,578	1,598	1,598	1,490
05/10/2001	1,549	1,451	1,472	1,539	1,560	1,560	1,451
12/10/2001	1,472	1,374	1,394	1,462	1,482	1,482	1,374
19/10/2001	1,441	1,343	1,363	1,431	1,451	1,451	1,343
26/10/2001	1,389	1,291	1,312	1,379	1,400	1,400	1,291
02/11/2001	1,343	1,260	1,281	1,348	1,369	1,369	1,260
09/11/2001	1,301	1,219	1,239	1,307	1,327	1,327	1,219
16/11/2001	1,338	1,255	1,276	1,343	1,363	1,363	1,255
23/11/2001	1,363	1,281	1,301	1,369	1,389	1,389	1,281
30/11/2001	1,322	1,239	1,260	1,327	1,348	1,348	1,239
14/12/2001	1,239	1,162	1,183	1,250	1,270	1,270	1,162
21/12/2001	1,239	1,162	1,183	1,250	1,270	1,270	1,162
28/12/2001	1,239	1,162	1,183	1,250	1,270	1,270	1,162
MEDIA	1,523	1,418	1,441	1,506	1,526	1,526	1,418

MILANO 2001 SUINI D'ALLEVAMENTO (Euro/Kg)



MILANO 2001
SUINI DA MACELLO
 (Euro/Kg)

