

MODENA 2000

CAMERA DI COMMERCIO DI MODENA

Categoria: SUINI VIVI

Prezzi: (Franco Partenza) Per Kg peso vivo - IVA esclusa

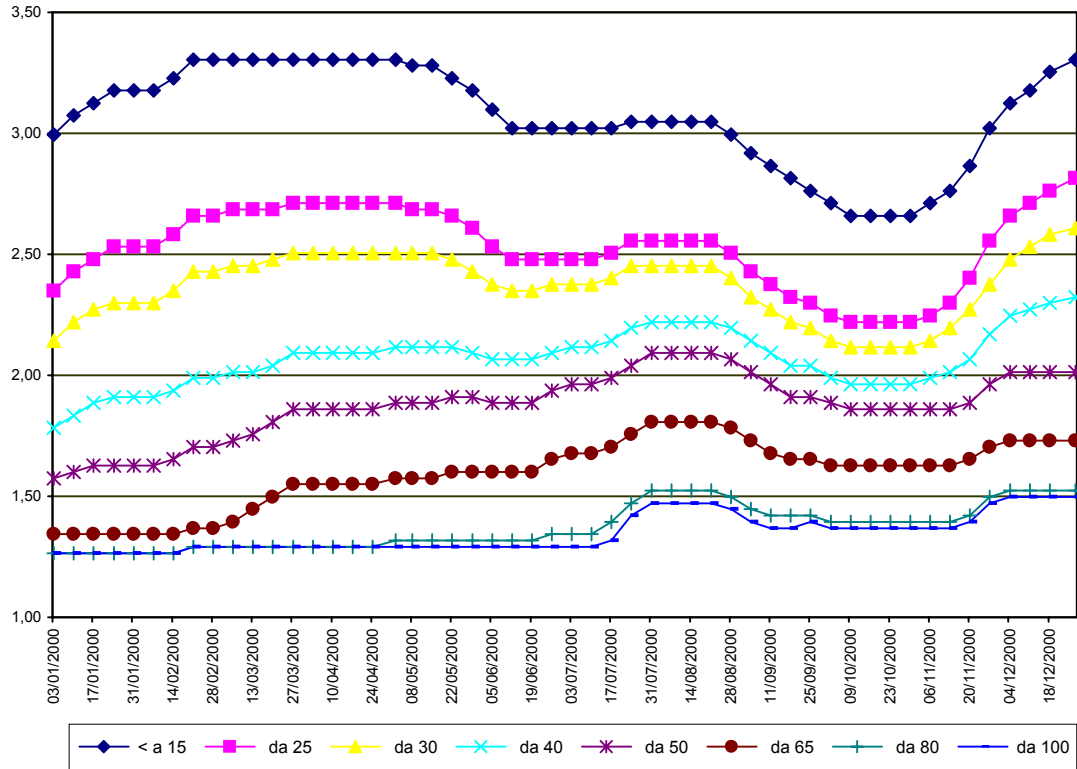
di Cosmino Giovanni Basile

SETTIMANE	SUINI D'ALLEVAMENTO €/Kg)							
	< a 15	da 25	da 30	da 40	da 50	da 65	da 80	da 100
03/01/2000	3,00	2,35	2,14	1,78	1,58	1,34	1,27	1,27
10/01/2000	3,07	2,43	2,22	1,83	1,60	1,34	1,27	1,27
17/01/2000	3,12	2,48	2,27	1,89	1,63	1,34	1,27	1,27
24/01/2000	3,18	2,53	2,30	1,91	1,63	1,34	1,27	1,27
31/01/2000	3,18	2,53	2,30	1,91	1,63	1,34	1,27	1,27
07/02/2000	3,18	2,53	2,30	1,91	1,63	1,34	1,27	1,27
14/02/2000	3,23	2,58	2,35	1,94	1,65	1,34	1,27	1,27
21/02/2000	3,31	2,66	2,43	1,99	1,70	1,37	1,29	1,29
28/02/2000	3,31	2,66	2,43	1,99	1,70	1,37	1,29	1,29
06/03/2000	3,31	2,69	2,45	2,01	1,73	1,39	1,29	1,29
13/03/2000	3,31	2,69	2,45	2,01	1,76	1,45	1,29	1,29
20/03/2000	3,31	2,69	2,48	2,04	1,81	1,50	1,29	1,29
27/03/2000	3,31	2,71	2,50	2,09	1,86	1,55	1,29	1,29
03/04/2000	3,31	2,71	2,50	2,09	1,86	1,55	1,29	1,29
10/04/2000	3,31	2,71	2,50	2,09	1,86	1,55	1,29	1,29
17/04/2000	3,31	2,71	2,50	2,09	1,86	1,55	1,29	1,29
24/04/2000	3,31	2,71	2,50	2,09	1,86	1,55	1,29	1,29
02/05/2000	3,31	2,71	2,50	2,12	1,89	1,58	1,32	1,29
08/05/2000	3,28	2,69	2,50	2,12	1,89	1,58	1,32	1,29
15/05/2000	3,28	2,69	2,50	2,12	1,89	1,58	1,32	1,29
22/05/2000	3,23	2,66	2,48	2,12	1,91	1,60	1,32	1,29
29/05/2000	3,18	2,61	2,43	2,09	1,91	1,60	1,32	1,29
05/06/2000	3,10	2,53	2,38	2,07	1,89	1,60	1,32	1,29
12/06/2000	3,02	2,48	2,35	2,07	1,89	1,60	1,32	1,29
19/06/2000	3,02	2,48	2,35	2,07	1,89	1,60	1,32	1,29
26/06/2000	3,02	2,48	2,38	2,09	1,94	1,65	1,34	1,29
03/07/2000	3,02	2,48	2,38	2,12	1,96	1,68	1,34	1,29
10/07/2000	3,02	2,48	2,38	2,12	1,96	1,68	1,34	1,29
17/07/2000	3,02	2,50	2,40	2,14	1,99	1,70	1,39	1,32
24/07/2000	3,05	2,56	2,45	2,19	2,04	1,76	1,47	1,42
31/07/2000	3,05	2,56	2,45	2,22	2,09	1,81	1,52	1,47
07/08/2000	3,05	2,56	2,45	2,22	2,09	1,81	1,52	1,47
14/08/2000	3,05	2,56	2,45	2,22	2,09	1,81	1,52	1,47
21/08/2000	3,05	2,56	2,45	2,22	2,09	1,81	1,52	1,47
28/08/2000	3,00	2,50	2,40	2,19	2,07	1,78	1,50	1,45
04/09/2000	2,92	2,43	2,32	2,14	2,01	1,73	1,45	1,39
11/09/2000	2,87	2,38	2,27	2,09	1,96	1,68	1,42	1,37
18/09/2000	2,81	2,32	2,22	2,04	1,91	1,65	1,42	1,37
25/09/2000	2,76	2,30	2,19	2,04	1,91	1,65	1,42	1,39
02/10/2000	2,71	2,25	2,14	1,99	1,89	1,63	1,39	1,37
09/10/2000	2,66	2,22	2,12	1,96	1,86	1,63	1,39	1,37
16/10/2000	2,66	2,22	2,12	1,96	1,86	1,63	1,39	1,37
23/10/2000	2,66	2,22	2,12	1,96	1,86	1,63	1,39	1,37
30/10/2000	2,66	2,22	2,12	1,96	1,86	1,63	1,39	1,37
06/11/2000	2,71	2,25	2,14	1,99	1,86	1,63	1,39	1,37
13/11/2000	2,76	2,30	2,19	2,01	1,86	1,63	1,39	1,37
20/11/2000	2,87	2,40	2,27	2,07	1,89	1,65	1,42	1,39
27/11/2000	3,02	2,56	2,38	2,17	1,96	1,70	1,50	1,47
04/12/2000	3,12	2,66	2,48	2,25	2,01	1,73	1,52	1,50
11/12/2000	3,18	2,71	2,53	2,27	2,01	1,73	1,52	1,50
18/12/2000	3,25	2,76	2,58	2,30	2,01	1,73	1,52	1,50
27/12/2000	3,31	2,81	2,61	2,32	2,01	1,73	1,52	1,50
MEDIA	3,07	2,53	2,37	2,07	1,88	1,59	1,37	1,35

MODENA 2000

SETTIMANE	SUINI DA MACELLO €/Kg)							
	90/115	115/130	130/144	144/156	156/176	176/180	180/185	> 185
03/01/2000	1,291	1,178	1,224	1,265	1,276	1,250	1,167	1,105
10/01/2000	1,255	1,141	1,188	1,229	1,239	1,219	1,136	1,074
17/01/2000	1,224	1,095	1,141	1,183	1,193	1,172	1,090	1,028
24/01/2000	1,162	1,048	1,095	1,136	1,147	1,126	1,043	0,981
31/01/2000	1,152	1,038	1,085	1,126	1,136	1,116	1,033	0,971
07/02/2000	1,152	1,038	1,085	1,126	1,136	1,116	1,033	0,971
14/02/2000	1,188	1,074	1,121	1,162	1,172	1,152	1,069	1,007
21/02/2000	1,229	1,116	1,162	1,203	1,214	1,193	1,110	1,048
28/02/2000	1,214	1,095	1,141	1,183	1,193	1,172	1,090	1,028
06/03/2000	1,188	1,074	1,121	1,162	1,172	1,152	1,069	1,007
13/03/2000	1,188	1,074	1,121	1,162	1,172	1,152	1,069	1,007
20/03/2000	1,188	1,074	1,121	1,162	1,172	1,152	1,069	1,007
27/03/2000	1,167	1,054	1,100	1,141	1,152	1,126	1,043	0,981
03/04/2000	1,152	1,028	1,074	1,116	1,126	1,100	1,017	0,955
10/04/2000	1,126	0,992	1,038	1,079	1,090	1,064	0,981	0,919
17/04/2000	1,126	0,986	1,033	1,074	1,085	1,059	0,976	0,914
24/04/2000	1,126	0,986	1,033	1,074	1,085	1,059	0,976	0,914
02/05/2000	1,131	0,992	1,038	1,079	1,090	1,064	0,981	0,919
08/05/2000	1,141	0,992	1,038	1,079	1,090	1,064	0,981	0,919
15/05/2000	1,157	0,992	1,038	1,079	1,090	1,064	0,981	0,919
22/05/2000	1,157	0,899	0,997	1,038	1,038	1,007	0,924	0,862
29/05/2000	1,147	0,924	0,971	1,012	1,002	0,971	0,883	0,821
05/06/2000	1,141	0,899	0,945	0,986	0,976	0,945	0,857	0,795
12/06/2000	1,152	0,899	0,945	0,986	0,986	0,945	0,857	0,795
19/06/2000	1,203	0,940	0,986	1,023	1,028	0,986	0,899	0,837
26/06/2000	1,255	0,997	1,043	1,079	1,085	1,043	0,955	0,893
03/07/2000	1,276	1,023	1,069	1,105	1,116	1,069	0,981	0,919
10/07/2000	1,291	1,012	1,059	1,095	1,105	1,059	0,971	0,909
17/07/2000	1,353	1,069	1,116	1,152	1,162	1,116	1,079	0,966
24/07/2000	1,446	1,162	1,209	1,245	1,255	1,209	1,121	1,059
31/07/2000	1,472	1,198	1,245	1,281	1,291	1,245	1,157	1,095
07/08/2000	1,472	1,198	1,245	1,281	1,291	1,245	1,157	1,095
14/08/2000	1,524	1,234	1,281	1,317	1,327	1,281	1,193	1,131
21/08/2000	1,524	1,276	1,322	1,358	1,369	1,322	1,234	1,172
28/08/2000	1,498	1,276	1,322	1,358	1,369	1,322	1,234	1,172
04/09/2000	1,472	1,250	1,296	1,332	1,343	1,296	1,209	1,147
11/09/2000	1,446	1,250	1,296	1,332	1,343	1,296	1,209	1,147
18/09/2000	1,472	1,291	1,338	1,374	1,384	1,338	1,250	1,188
25/09/2000	1,498	1,353	1,400	1,436	1,446	1,400	1,312	1,250
02/10/2000	1,420	1,301	1,348	1,384	1,394	1,348	1,260	1,198
09/10/2000	1,420	1,301	1,348	1,384	1,394	1,348	1,260	1,198
16/10/2000	1,446	1,338	1,384	1,420	1,431	1,384	1,296	1,234
23/10/2000	1,446	1,338	1,384	1,420	1,431	1,384	1,296	1,234
30/10/2000	1,425	1,317	1,363	1,400	1,410	1,363	1,276	1,214
06/11/2000	1,425	1,317	1,363	1,400	1,410	1,363	1,276	1,214
13/11/2000	1,446	1,338	1,384	1,420	1,431	1,384	1,296	1,234
20/11/2000	1,487	1,379	1,425	1,462	1,472	1,425	1,338	1,276
27/11/2000	1,555	1,446	1,493	1,529	1,539	1,493	1,405	1,343
04/12/2000	1,565	1,456	1,503	1,539	1,549	1,503	1,415	1,353
11/12/2000	1,560	1,451	1,498	1,534	1,544	1,498	1,410	1,348
18/12/2000	1,560	1,451	1,498	1,534	1,544	1,498	1,410	1,348
27/12/2000	1,560	1,451	1,498	1,534	1,544	1,498	1,410	1,348
MEDIA	1,321	1,156	1,203	1,242	1,251	1,214	1,130	1,067

MODENA 2000
SUINI D'ALLEVAMENTO
 (Euro/Kg)



MODENA 2000
SUINI DA MACELLO
 (Euro/Kg)

