



12/2009

Mercato
Mercati nazionali

5.5.19.2



REGGIO EMILIA 2009

CAMERA DI COMMERCIO DI REGGIO EMILIA

Categoria: SUINI VIVI

Prezzi: (Franco Partenza) Per Kg peso vivo - IVA esclusa

di Cosmino Giovanni Basile

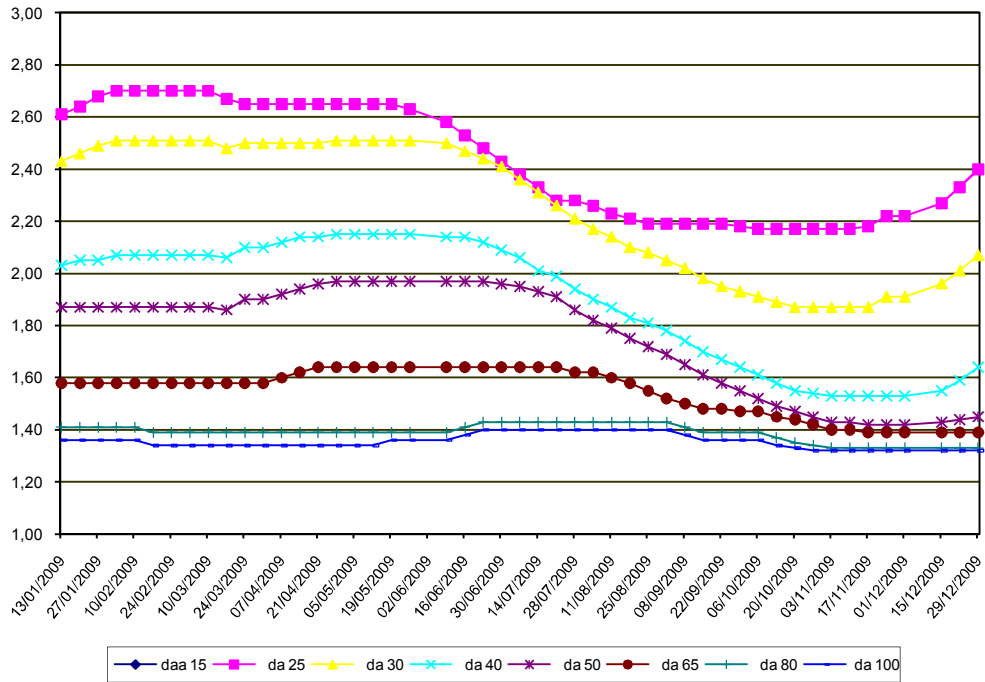
SETTIMANE	SUINI D'ALLEVAMENTO (€/Kg)								
	da 6	da 15	da 25	da 30	da 40	da 50	da 65	da 80	da 100
13/01/2009	6,15	3,60	2,61	2,43	2,03	1,87	1,58	1,41	1,36
20/01/2009	6,21	3,63	2,64	2,46	2,05	1,87	1,58	1,41	1,36
27/01/2009	6,26	3,67	2,68	2,49	2,05	1,87	1,58	1,41	1,36
03/02/2009	6,26	3,67	2,70	2,51	2,07	1,87	1,58	1,41	1,36
10/02/2009	6,26	3,67	2,70	2,51	2,07	1,87	1,58	1,41	1,36
17/02/2009	6,26	3,67	2,70	2,51	2,07	1,87	1,58	1,39	1,34
24/02/2009	6,26	3,67	2,70	2,51	2,07	1,87	1,58	1,39	1,34
03/03/2009	6,26	3,67	2,70	2,51	2,07	1,87	1,58	1,39	1,34
10/03/2009	6,26	3,67	2,70	2,51	2,07	1,87	1,58	1,39	1,34
17/03/2009	6,23	3,64	2,67	2,48	2,06	1,86	1,58	1,39	1,34
24/03/2009	6,18	3,59	2,65	2,50	2,10	1,90	1,58	1,39	1,34
31/03/2009	6,18	3,59	2,65	2,50	2,10	1,90	1,58	1,39	1,34
07/04/2009	6,18	3,59	2,65	2,50	2,12	1,92	1,60	1,39	1,34
14/04/2009	6,18	3,59	2,65	2,50	2,14	1,94	1,62	1,39	1,34
21/04/2009	6,18	3,59	2,65	2,50	2,14	1,96	1,64	1,39	1,34
28/04/2009	6,18	3,59	2,65	2,51	2,15	1,97	1,64	1,39	1,34
05/05/2009	6,18	3,59	2,65	2,51	2,15	1,97	1,64	1,39	1,34
12/05/2009	6,13	3,59	2,65	2,51	2,15	1,97	1,64	1,39	1,34
19/05/2009	6,13	3,59	2,65	2,51	2,15	1,97	1,64	1,39	1,36
26/05/2009	6,08	3,54	2,63	2,51	2,15	1,97	1,64	1,39	1,36
09/06/2009	6,03	3,49	2,58	2,50	2,14	1,97	1,64	1,39	1,36
16/06/2009	5,98	3,44	2,53	2,47	2,14	1,97	1,64	1,41	1,38
23/06/2009	5,90	3,39	2,48	2,44	2,12	1,97	1,64	1,43	1,40
30/06/2009	5,85	3,34	2,43	2,41	2,09	1,96	1,64	1,43	1,40
07/07/2009	5,75	3,29	2,38	2,36	2,06	1,95	1,64	1,43	1,40
14/07/2009	5,70	3,24	2,33	2,31	2,01	1,93	1,64	1,43	1,40
21/07/2009	5,60	3,19	2,28	2,26	1,99	1,91	1,64	1,43	1,40
28/07/2009	5,59	3,19	2,28	2,21	1,94	1,86	1,62	1,43	1,40
04/08/2009	5,49	3,17	2,26	2,17	1,90	1,82	1,62	1,43	1,40
11/08/2009	5,39	3,14	2,23	2,14	1,87	1,79	1,60	1,43	1,40
18/08/2009	5,34	3,12	2,21	2,10	1,83	1,75	1,58	1,43	1,40
25/08/2009	5,34	3,12	2,19	2,08	1,81	1,72	1,55	1,43	1,40
01/09/2009	5,34	3,12	2,19	2,05	1,78	1,69	1,52	1,43	1,40
08/09/2009	5,34	3,12	2,19	2,02	1,74	1,65	1,50	1,41	1,38
15/09/2009	5,34	3,12	2,19	1,98	1,70	1,61	1,48	1,39	1,36
22/09/2009	5,34	3,12	2,19	1,95	1,67	1,58	1,48	1,39	1,36
29/09/2009	5,34	3,12	2,18	1,93	1,64	1,55	1,47	1,39	1,36
06/10/2009	5,34	3,12	2,17	1,91	1,61	1,52	1,47	1,39	1,36
13/10/2009	5,34	3,12	2,17	1,89	1,58	1,49	1,45	1,37	1,34
20/10/2009	5,34	3,12	2,17	1,87	1,55	1,47	1,44	1,35	1,33
27/10/2009	5,34	3,12	2,17	1,87	1,54	1,45	1,42	1,34	1,32
03/11/2009	5,34	3,12	2,17	1,87	1,53	1,43	1,40	1,33	1,32
10/11/2009	5,34	3,12	2,17	1,87	1,53	1,43	1,40	1,33	1,32
17/11/2009	5,40	3,16	2,18	1,87	1,53	1,42	1,39	1,33	1,32
24/11/2009	5,50	3,22	2,22	1,91	1,53	1,42	1,39	1,33	1,32
01/12/2009	5,50	3,22	2,22	1,91	1,53	1,42	1,39	1,33	1,32
15/12/2009	5,60	3,27	2,27	1,96	1,55	1,43	1,39	1,33	1,32
22/12/2009	5,72	3,33	2,33	2,01	1,59	1,44	1,39	1,33	1,32
29/12/2009	5,87	3,43	2,40	2,07	1,64	1,45	1,39	1,33	1,32
MEDIA	5,80	3,38	2,43	2,25	1,90	1,76	1,55	1,39	1,36

REGGIO EMILIA 2009

SETTIMANE	SUINI DA MACELLO (€/Kg)							
	90/115	115/130	130/144	144/156	156/176	176/180	180/185	> 185
13/01/2009	1,280	1,220	1,240	1,260	1,290	1,280	1,230	1,200
20/01/2009	1,250	1,200	1,220	1,240	1,270	1,260	1,230	1,200
27/01/2009	1,220	1,170	1,190	1,210	1,240	1,230	1,200	1,170
03/02/2009	1,160	1,110	1,130	1,150	1,180	1,170	1,140	1,110
10/02/2009	1,130	1,080	1,100	1,120	1,150	1,140	1,110	1,080
17/02/2009	1,105	1,055	1,075	1,095	1,125	1,115	1,085	1,055
24/02/2009	1,070	1,020	1,040	1,060	1,090	1,080	1,050	1,020
03/03/2009	1,070	1,020	1,040	1,060	1,090	1,080	1,050	1,020
10/03/2009	1,070	1,020	1,040	1,060	1,090	1,080	1,050	1,020
17/03/2009	1,050	1,000	1,020	1,040	1,070	1,060	1,030	1,000
24/03/2009	1,060	1,010	1,030	1,050	1,080	1,070	1,040	1,010
31/03/2009	1,080	1,030	1,050	1,070	1,100	1,090	1,060	1,030
07/04/2009	1,120	1,070	1,090	1,110	1,140	1,130	1,100	1,070
14/04/2009	1,120	1,070	1,090	1,110	1,140	1,130	1,100	1,070
21/04/2009	1,120	1,050	1,070	1,090	1,120	1,110	1,080	1,050
28/04/2009	1,080	1,010	1,030	1,050	1,080	1,070	1,040	1,010
05/05/2009	1,040	0,970	0,990	1,010	1,040	1,030	1,000	0,970
12/05/2009	1,050	0,980	1,000	1,020	1,050	1,040	1,010	0,980
19/05/2009	1,085	1,015	1,035	1,055	1,085	1,075	1,045	1,015
26/05/2009	1,125	1,055	1,075	1,095	1,125	1,115	1,085	1,055
09/06/2009	1,150	1,080	1,100	1,120	1,150	1,140	1,110	1,080
16/06/2009	1,200	1,115	1,135	1,155	1,185	1,175	1,145	1,115
23/06/2009	1,240	1,155	1,175	1,195	1,225	1,215	1,185	1,155
30/06/2009	1,270	1,185	1,205	1,225	1,255	1,245	1,215	1,185
07/07/2009	1,255	1,170	1,190	1,210	1,240	1,230	1,200	1,170
14/07/2009	1,215	1,130	1,150	1,170	1,200	1,190	1,160	1,130
21/07/2009	1,225	1,140	1,160	1,180	1,210	1,200	1,170	1,140
28/07/2009	1,255	1,170	1,190	1,210	1,240	1,230	1,200	1,170
04/08/2009	1,285	1,200	1,220	1,240	1,270	1,260	1,230	1,200
11/08/2009	1,325	1,240	1,260	1,280	1,310	1,300	1,270	1,240
18/08/2009	1,400	1,315	1,335	1,355	1,385	1,375	1,345	1,315
25/08/2009	1,410	1,325	1,345	1,365	1,395	1,385	1,355	1,325
01/09/2009	1,410	1,325	1,345	1,365	1,395	1,385	1,355	1,325
08/09/2009	1,390	1,310	1,330	1,350	1,380	1,370	1,340	1,310
15/09/2009	1,350	1,270	1,290	1,310	1,340	1,330	1,300	1,270
22/09/2009	1,360	1,280	1,300	1,320	1,350	1,340	1,310	1,280
29/09/2009	1,400	1,320	1,340	1,360	1,390	1,380	1,350	1,320
06/10/2009	1,385	1,305	1,325	1,345	1,375	1,365	1,335	1,305
13/10/2009	1,350	1,270	1,290	1,310	1,340	1,330	1,300	1,270
20/10/2009	1,340	1,260	1,280	1,300	1,330	1,320	1,290	1,260
27/10/2009	1,310	1,240	1,260	1,290	1,320	1,315	1,285	1,255
03/11/2009	1,290	1,220	1,240	1,270	1,310	1,305	1,275	1,245
10/11/2009	1,265	1,195	1,215	1,245	1,285	1,280	1,250	1,220
17/11/2009	1,260	1,190	1,210	1,240	1,280	1,275	1,245	1,215
24/11/2009	1,265	1,195	1,215	1,245	1,285	1,280	1,250	1,220
01/12/2009	1,265	1,195	1,215	1,245	1,285	1,280	1,250	1,220
15/12/2009	1,260	1,190	1,210	1,240	1,280	1,275	1,245	1,215
22/12/2009	1,235	1,165	1,185	1,215	1,255	1,250	1,220	1,190
29/12/2009	1,240	1,170	1,190	1,220	1,260	1,255	1,225	1,195
MEDIA	1,222	1,153	1,173	1,194	1,226	1,217	1,187	1,157

nq = non quotati

REGGIO EMILIA 2009
SUINI D'ALLEVAMENTO
 (Euro/Kg)



REGGIO EMILIA 2009
SUINI DA MACELLO
 (Euro/Kg)

