



12/2011

Mercato
Mercati nazionali

5.4.22

**BRESCIA 2011**

CAMERA DI COMMERCIO DI BRESCIA

Categoria: SUINI VIVI

Prezzi: (Franco Partenza) Per Kg peso vivo - IVA esclusa

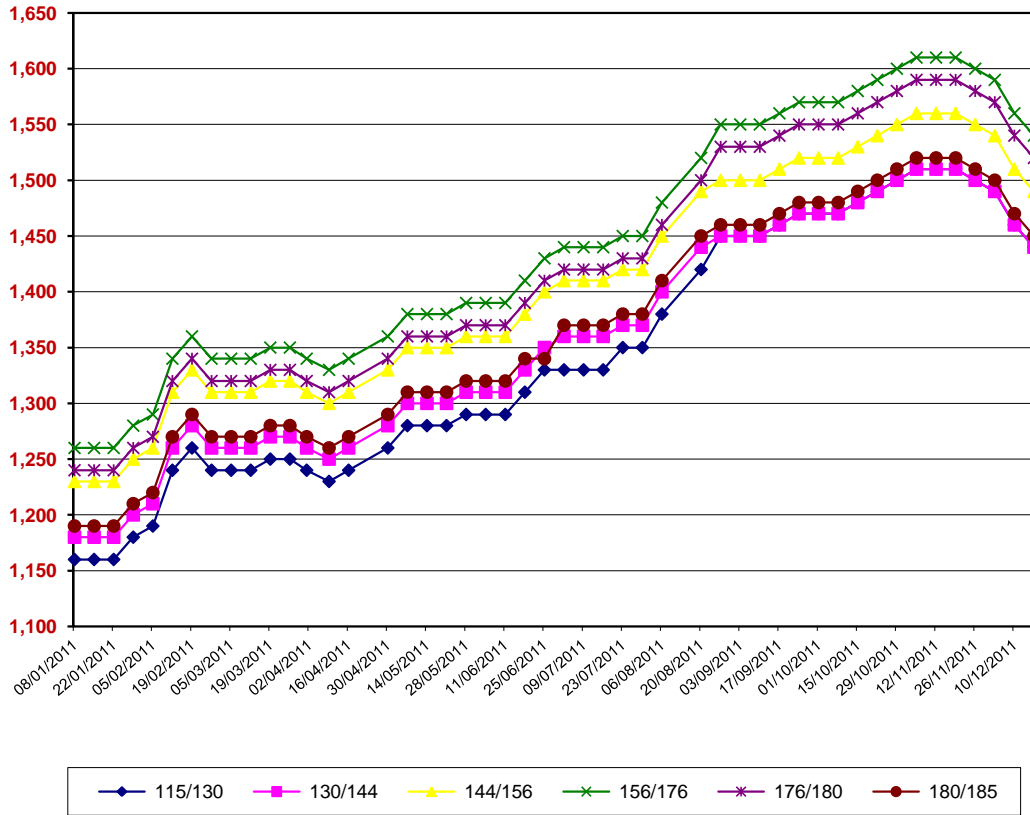
SETTIMANE	SUINI D'ALLEVAMENTO (€/Kg)							
	< a 15	da 25	da 30	da 40	da 50	da 65	da 80	da 100
08/01/2011	3,23	2,13	1,88	1,57	1,45	1,44	1,35	1,36
15/01/2011	3,27	2,16	1,91	1,60	1,45	1,44	1,35	1,36
22/01/2011	3,30	2,19	1,94	1,61	1,45	1,44	1,35	1,36
29/01/2011	3,34	2,23	1,98	1,63	1,47	1,44	1,35	1,36
05/02/2011	3,37	2,26	2,03	1,64	1,47	1,44	1,35	1,36
12/02/2011	3,45	2,35	2,09	1,67	1,47	1,44	1,35	1,36
19/02/2011	3,48	2,41	2,15	1,73	1,49	1,46	1,37	1,38
26/02/2011	3,50	2,43	2,17	1,75	1,51	1,48	1,37	1,38
05/03/2011	3,55	2,50	2,28	1,84	1,51	1,48	1,37	1,38
12/03/2011	3,58	2,55	2,33	1,89	1,54	1,51	1,40	1,41
19/03/2011	3,59	2,57	2,37	1,93	1,58	1,52	1,41	1,42
26/03/2011	3,61	2,60	2,40	1,97	1,62	1,52	1,41	1,42
01/04/2011	3,61	2,62	2,42	1,99	1,64	1,54	1,41	1,42
09/04/2011	3,61	2,62	2,43	2,01	1,66	1,54	1,41	1,42
16/04/2011	3,61	2,62	2,44	2,04	1,69	1,54	1,41	1,42
30/04/2011	3,61	2,62	2,44	2,09	1,77	1,54	1,41	1,42
07/05/2011	3,61	2,62	2,44	2,12	1,80	1,56	1,41	1,42
14/05/2011	3,61	2,62	2,44	2,14	1,82	1,58	1,41	1,42
21/05/2011	3,61	2,62	2,44	2,14	1,82	1,58	1,41	1,42
28/05/2011	3,61	2,62	2,44	2,14	1,82	1,58	1,41	1,42
04/06/2011	3,61	2,62	2,44	2,14	1,82	1,58	1,41	1,42
11/06/2011	3,61	2,62	2,44	2,14	1,82	1,58	1,41	1,42
18/06/2011	3,57	2,59	2,43	2,14	1,82	1,58	1,41	1,42
25/06/2011	3,53	2,55	2,40	2,14	1,82	1,58	1,41	1,42
02/07/2011	3,48	2,50	2,35	2,14	1,82	1,58	1,41	1,42
09/07/2011	3,48	2,50	2,35	2,14	1,82	1,58	1,41	1,42
16/07/2011	3,35	2,42	2,32	2,12	1,82	1,58	1,41	1,42
23/07/2011	3,33	2,40	2,30	2,10	1,80	1,58	1,41	1,42
30/07/2011	3,28	2,38	2,27	2,06	1,79	1,58	1,41	1,42
06/08/2011	3,23	2,34	2,23	2,02	1,79	1,58	1,41	1,42
20/08/2011	3,20	2,30	2,20	2,00	1,77	1,58	1,41	1,42
27/08/2011	3,20	2,30	2,16	1,96	1,72	1,58	1,46	1,44
03/09/2011	3,20	2,30	2,14	1,92	1,70	1,58	1,49	1,47
10/09/2011	3,17	2,27	2,11	1,90	1,70	1,58	1,49	1,47
17/09/2011	3,17	2,27	2,11	1,90	1,70	1,58	1,49	1,47
24/09/2011	3,17	2,27	2,09	1,88	1,70	1,58	1,49	1,47
01/10/2011	3,17	2,27	2,09	1,88	1,70	1,58	1,49	1,47
08/10/2011	3,17	2,27	2,09	1,88	1,70	1,58	1,49	1,47
15/10/2011	3,18	2,28	2,10	1,89	1,71	1,59	1,50	1,48
22/10/2011	3,22	2,31	2,10	1,89	1,71	1,59	1,53	1,50
29/10/2011	3,23	2,32	2,11	1,90	1,72	1,60	1,54	1,51
05/11/2011	3,25	2,34	2,13	1,90	1,72	1,61	1,55	1,53
12/11/2011	3,29	2,38	2,16	1,90	1,72	1,61	1,55	1,53
19/11/2011	3,34	2,43	2,21	1,90	1,72	1,61	1,55	1,53
26/11/2011	3,40	2,46	2,24	1,92	1,72	1,61	1,55	1,53
03/12/2011	3,47	2,53	2,31	1,95	1,75	1,61	1,55	1,53
10/12/2011	3,57	2,59	2,37	1,98	1,76	1,61	1,55	1,53
17/12/2011	3,62	2,64	2,42	2,03	1,78	1,61	1,55	1,53
MEDIA	3,41	2,43	2,24	1,94	1,69	1,55	1,44	1,44

BRESCIA 2011

SETTIMANE	SUINI DA MACELLO (€/Kg)							
	90/115	115/130	130/144	144/156	156/176	176/180	180/185	> 185
08/01/2011	nq	1,160	1,180	1,230	1,260	1,240	1,190	1,150
15/01/2011	nq	1,160	1,180	1,230	1,260	1,240	1,190	1,150
22/01/2011	nq	1,160	1,180	1,230	1,260	1,240	1,190	1,150
29/01/2011	nq	1,180	1,200	1,250	1,280	1,260	1,210	1,170
05/02/2011	nq	1,190	1,210	1,260	1,290	1,270	1,220	1,180
12/02/2011	nq	1,240	1,260	1,310	1,340	1,320	1,270	1,230
19/02/2011	nq	1,260	1,280	1,330	1,360	1,340	1,290	1,250
26/02/2011	nq	1,240	1,260	1,310	1,340	1,320	1,270	1,230
05/03/2011	nq	1,240	1,260	1,310	1,340	1,320	1,270	1,230
12/03/2011	nq	1,240	1,260	1,310	1,340	1,320	1,270	1,230
19/03/2011	nq	1,250	1,270	1,320	1,350	1,330	1,280	1,240
26/03/2011	nq	1,250	1,270	1,320	1,350	1,330	1,280	1,240
01/04/2011	nq	1,240	1,260	1,310	1,340	1,320	1,270	1,230
09/04/2011	nq	1,230	1,250	1,300	1,330	1,310	1,260	1,220
16/04/2011	nq	1,240	1,260	1,310	1,340	1,320	1,270	1,230
30/04/2011	nq	1,260	1,280	1,330	1,360	1,340	1,290	1,250
07/05/2011	nq	1,280	1,300	1,350	1,380	1,360	1,310	1,270
14/05/2011	nq	1,280	1,300	1,350	1,380	1,360	1,310	1,270
21/05/2011	nq	1,280	1,300	1,350	1,380	1,360	1,310	1,270
28/05/2011	nq	1,290	1,310	1,360	1,390	1,370	1,320	1,280
04/06/2011	nq	1,290	1,310	1,360	1,390	1,370	1,320	1,280
11/06/2011	nq	1,290	1,310	1,360	1,390	1,370	1,320	1,280
18/06/2011	nq	1,310	1,330	1,380	1,410	1,390	1,340	1,300
25/06/2011	nq	1,330	1,350	1,400	1,430	1,410	1,340	1,300
02/07/2011	nq	1,330	1,360	1,410	1,440	1,420	1,370	1,330
09/07/2011	nq	1,330	1,360	1,410	1,440	1,420	1,370	1,330
16/07/2011	nq	1,330	1,360	1,410	1,440	1,420	1,370	1,330
23/07/2011	nq	1,350	1,370	1,420	1,450	1,430	1,380	1,340
30/07/2011	nq	1,350	1,370	1,420	1,450	1,430	1,380	1,340
06/08/2011	nq	1,380	1,400	1,450	1,480	1,460	1,410	1,370
20/08/2011	nq	1,420	1,440	1,490	1,520	1,500	1,450	1,410
27/08/2011	nq	1,450	1,450	1,500	1,550	1,530	1,460	1,420
03/09/2011	nq	1,450	1,450	1,500	1,550	1,530	1,460	1,420
10/09/2011	nq	1,450	1,450	1,500	1,550	1,530	1,460	1,420
17/09/2011	nq	1,460	1,460	1,510	1,560	1,540	1,470	1,430
24/09/2011	nq	1,470	1,470	1,520	1,570	1,550	1,480	1,440
01/10/2011	nq	1,470	1,470	1,520	1,570	1,550	1,480	1,440
08/10/2011	nq	1,470	1,470	1,520	1,570	1,550	1,480	1,440
15/10/2011	nq	1,480	1,480	1,530	1,580	1,560	1,490	1,450
22/10/2011	nq	1,490	1,490	1,540	1,590	1,570	1,500	1,460
29/10/2011	nq	1,500	1,500	1,550	1,600	1,580	1,510	1,470
05/11/2011	nq	1,510	1,510	1,560	1,610	1,590	1,520	1,480
12/11/2011	nq	1,510	1,510	1,560	1,610	1,590	1,520	1,480
19/11/2011	nq	1,510	1,510	1,560	1,610	1,590	1,520	1,480
26/11/2011	nq	1,500	1,500	1,550	1,600	1,580	1,510	1,470
03/12/2011	nq	1,490	1,490	1,540	1,590	1,570	1,500	1,460
10/12/2011	nq	1,460	1,460	1,510	1,560	1,540	1,470	1,430
17/12/2011	nq	1,440	1,440	1,490	1,540	1,520	1,450	1,410
MEDIA	nq	1,344	1,357	1,407	1,444	1,424	1,367	1,327

nq = non quotati

BRESCIA 2011
SUINI DA MACELLO
 (Euro/Kg)



nq = non quotati