



Mercato
Mercati nazionali

5.10.20

ERSAF
ENTE REGIONALE PER I SERVIZI
ALL'AGRICOLTURA E ALLE FORESTE

12/2012

PARMA 2012

CAMERA DI COMMERCIO DI PARMA

Categoria: SUINI VIVI

Prezzi: (Franco Partenza) Per Kg peso vivo - IVA esclusa

di Cosmino Giovanni Basile

SETTIMANE	SUINI D'ALLEVAMENTO (€/Kg)							
	< a 15	da 25	da 30	da 40	da 50	da 65	da 80	da 100
13/01/2012	3,880	2,890	2,650	2,200	1,830	1,600	1,500	1,500
20/01/2012	3,920	2,930	2,700	2,240	1,850	1,600	1,500	1,500
27/01/2012	3,950	2,970	2,740	2,260	1,860	1,600	1,490	1,480
03/02/2012	3,970	3,000	2,780	2,290	1,880	1,600	1,490	1,480
10/02/2012	nq	nq	nq	nq	nq	nq	nq	nq
17/02/2012	4,010	3,080	2,870	2,360	1,930	1,610	1,490	1,480
24/02/2012	4,040	3,130	2,910	2,400	1,970	1,640	1,490	1,480
02/03/2012	4,060	3,170	2,950	2,440	2,000	1,660	1,490	1,480
09/03/2012	4,060	3,190	2,980	2,470	2,020	1,670	1,490	1,480
16/03/2012	4,060	3,200	3,010	2,490	2,040	1,680	1,490	1,480
23/03/2012	4,060	3,220	3,030	2,510	2,060	1,690	1,490	1,480
30/03/2012	4,060	3,230	3,050	2,520	2,090	1,690	1,490	1,480
06/04/2012	4,060	3,230	3,050	2,540	2,130	1,700	1,500	1,480
13/04/2012	4,060	3,230	3,050	2,550	2,150	1,720	1,500	1,480
20/04/2012	4,060	3,230	3,050	2,550	2,180	1,740	1,500	1,480
27/04/2012	4,060	3,230	3,050	2,550	2,200	1,750	1,500	1,480
04/05/2012	4,060	3,230	3,050	2,560	2,210	1,760	1,500	1,480
11/05/2012	4,060	3,180	3,010	2,530	2,210	1,760	1,500	1,480
18/05/2012	3,960	3,150	2,970	2,500	2,190	1,750	1,490	1,470
25/05/2012	3,900	3,100	2,920	2,470	2,180	1,750	1,490	1,470
01/06/2012	nq	nq	nq	nq	2,180	1,750	1,490	1,470
08/06/2012	3,800	3,030	2,870	2,460	2,180	1,750	1,510	1,490
15/06/2012	3,740	2,970	2,820	2,430	2,170	1,750	1,520	1,500
22/06/2012	3,780	2,970	2,760	2,380	2,130	1,750	1,520	1,500
29/06/2012	3,690	2,900	2,710	2,370	2,130	1,750	1,550	1,530
06/07/2012	3,590	2,800	2,630	2,340	2,110	1,750	1,550	1,530
13/07/2012	3,540	2,740	2,560	2,290	2,070	1,750	1,550	1,530
20/07/2012	3,500	2,700	2,520	2,250	2,040	1,720	1,550	1,530
27/07/2012	3,460	2,670	2,490	2,230	2,030	1,720	1,580	1,550
03/08/2012	3,420	2,630	2,440	2,190	1,990	1,720	1,620	1,590
10/08/2012	3,390	2,600	2,400	2,160	1,960	1,720	1,650	1,610
17/08/2012	3,380	2,590	2,380	2,150	1,950	1,720	1,660	1,620
24/08/2012	3,370	2,580	2,360	2,130	1,930	1,720	1,670	1,630
31/08/2012	3,370	2,580	2,360	2,130	1,930	1,720	1,690	1,640
07/09/2012	3,370	2,580	2,360	2,130	1,930	1,720	1,690	1,640
14/09/2012	3,370	2,580	2,360	2,130	1,930	1,740	1,710	1,660
21/09/2012	3,370	2,580	2,360	2,130	1,930	1,750	1,730	1,680
28/09/2012	3,370	2,580	2,360	2,130	1,930	1,750	1,730	1,680
05/10/2012	3,410	2,610	2,360	2,130	1,930	1,750	1,740	1,690
12/10/2012	3,470	2,650	2,360	2,130	1,930	1,780	1,760	1,700
19/10/2012	3,570	2,680	2,360	2,130	1,930	1,780	1,760	1,700
27/10/2012	3,630	2,710	2,380	2,140	1,930	1,780	1,760	1,700
02/11/2012	3,630	2,710	2,380	2,140	1,930	1,780	1,760	1,700
09/11/2012	3,700	2,740	2,380	2,140	1,930	1,780	1,760	1,700
16/11/2012	3,750	2,770	2,400	2,150	1,930	1,780	1,760	1,700
23/11/2012	3,780	2,780	2,410	2,150	1,910	1,760	1,730	1,670
30/11/2012	3,790	2,780	2,430	2,150	1,910	1,760	1,720	1,660
07/12/2012	3,790	2,780	2,430	2,150	1,900	1,750	1,700	1,640
14/12/2012	3,790	2,770	2,420	2,130	1,870	1,720	1,660	1,600
21/12/2012	3,790	2,770	2,410	2,110	1,830	1,680	1,620	1,560
28/12/2012	3,790	2,770	2,380	2,070	1,790	1,650	1,590	1,540
MEDIA	3,602	2,768	2,542	2,200	1,965	1,686	1,562	1,531

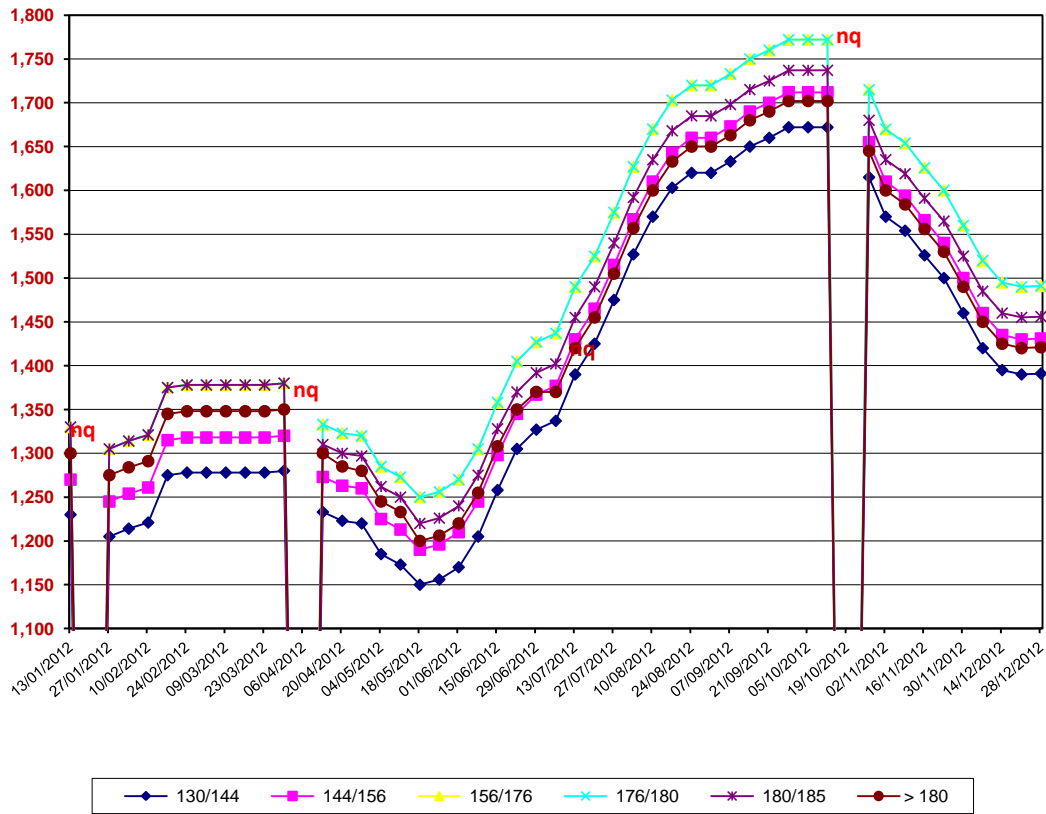
nq = non quotati

PARMA 2012

SETTIMANE	SUINI DA MACELLO (€/Kg)							
	90/115	115/130	130/144	144/156	156/176	176/180	180/185	> 180
13/01/2012	nq	nq	1,230	1,270	1,330	1,330	1,330	1,300
20/01/2012	nq	nq	nq	nq	nq	nq	nq	nq
27/01/2012	nq	nq	1,205	1,245	1,305	1,305	1,305	1,275
03/02/2012	nq	nq	1,214	1,254	1,314	1,314	1,314	1,284
10/02/2012	nq	nq	1,221	1,261	1,321	1,321	1,321	1,291
17/02/2012	nq	nq	1,275	1,315	1,375	1,375	1,375	1,345
24/02/2012	nq	nq	1,278	1,318	1,378	1,378	1,378	1,348
02/03/2012	nq	nq	1,278	1,318	1,378	1,378	1,378	1,348
09/03/2012	nq	nq	1,278	1,318	1,378	1,378	1,378	1,348
16/03/2012	nq	nq	1,278	1,318	1,378	1,378	1,378	1,348
23/03/2012	nq	nq	1,278	1,318	1,378	1,378	1,378	1,348
30/03/2012	nq	nq	1,280	1,320	1,380	1,380	1,380	1,350
06/04/2012	nq	nq	nq	nq	nq	nq	nq	nq
13/04/2012	nq	nq	1,233	1,273	1,333	1,333	1,310	1,300
20/04/2012	nq	nq	1,223	1,263	1,323	1,323	1,300	1,285
27/04/2012	nq	nq	1,220	1,260	1,320	1,320	1,297	1,280
04/05/2012	nq	nq	1,185	1,225	1,285	1,285	1,262	1,245
11/05/2012	nq	nq	1,173	1,213	1,273	1,273	1,250	1,233
18/05/2012	nq	nq	1,150	1,190	1,250	1,250	1,220	1,200
25/05/2012	nq	nq	1,156	1,196	1,256	1,256	1,226	1,206
01/06/2012	nq	nq	1,170	1,210	1,270	1,270	1,240	1,220
08/06/2012	nq	nq	1,205	1,245	1,305	1,305	1,275	1,255
15/06/2012	nq	nq	1,258	1,298	1,358	1,358	1,328	1,308
22/06/2012	nq	nq	1,305	1,345	1,405	1,405	1,370	1,350
29/06/2012	nq	nq	1,327	1,367	1,427	1,427	1,392	1,370
06/07/2012	nq	nq	1,337	1,377	1,437	1,437	1,402	1,370
13/07/2012	nq	nq	1,390	1,430	1,490	1,490	1,455	1,420
20/07/2012	nq	nq	1,425	1,465	1,525	1,525	1,490	1,455
27/07/2012	nq	nq	1,475	1,515	1,575	1,575	1,540	1,505
03/08/2012	nq	nq	1,527	1,567	1,627	1,627	1,592	1,557
10/08/2012	nq	nq	1,570	1,610	1,670	1,670	1,635	1,600
17/08/2012	nq	nq	1,603	1,643	1,703	1,703	1,668	1,633
24/08/2012	nq	nq	1,620	1,660	1,720	1,720	1,685	1,650
31/08/2012	nq	nq	1,620	1,660	1,720	1,720	1,685	1,650
07/09/2012	nq	nq	1,633	1,673	1,733	1,733	1,698	1,663
14/09/2012	nq	nq	1,650	1,690	1,750	1,750	1,715	1,680
21/09/2012	nq	nq	1,660	1,700	1,760	1,760	1,725	1,690
28/09/2012	nq	nq	1,672	1,712	1,772	1,772	1,737	1,702
05/10/2012	nq	nq	1,672	1,712	1,772	1,772	1,737	1,702
12/10/2012	nq	nq	1,672	1,712	1,772	1,772	1,737	1,702
19/10/2012	nq	nq	nq	nq	nq	nq	nq	nq
27/10/2012	nq	nq	1,615	1,655	1,715	1,715	1,680	1,645
02/11/2012	nq	nq	1,570	1,610	1,670	1,670	1,635	1,600
09/11/2012	nq	nq	1,554	1,594	1,654	1,654	1,619	1,584
16/11/2012	nq	nq	1,526	1,566	1,626	1,626	1,591	1,556
23/11/2012	nq	nq	1,500	1,540	1,600	1,600	1,565	1,530
30/11/2012	nq	nq	1,460	1,500	1,560	1,560	1,525	1,490
07/12/2012	nq	nq	1,420	1,460	1,520	1,520	1,485	1,450
14/12/2012	nq	nq	1,395	1,435	1,495	1,495	1,460	1,425
21/12/2012	nq	nq	1,390	1,430	1,490	1,490	1,455	1,420
28/12/2012	nq	nq	1,391	1,431	1,491	1,491	1,456	1,421
MEDIA	nq	nq	1,391	1,431	1,491	1,491	1,466	1,436

nq = non quotati

PARMA 2012
SUINI DA MACELLO
(Euro/Kg)



nq = non quotati