

REGGIO EMILIA 1993

CAMERA DI COMMERCIO DI REGGIO EMILIA

Categoria: SUINI VIVI

Prezzi: (Franco Partenza) Per Kg peso vivo - IVA esclusa

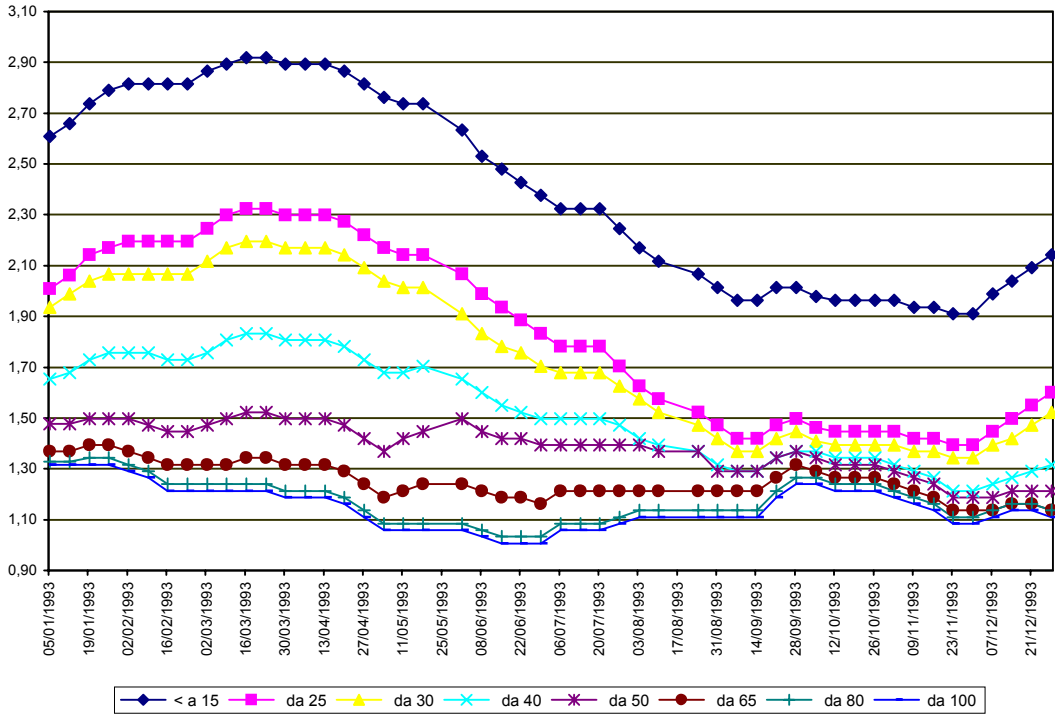
di Cosmino Giovanni Basile

SETTIMANE	SUINI D'ALLEVAMENTO (€/Kg)							
	< a 15	da 25	da 30	da 40	da 50	da 65	da 80	da 100
05/01/1993	2,61	2,01	1,94	1,65	1,48	1,37	1,33	1,32
12/01/1993	2,66	2,06	1,99	1,68	1,48	1,37	1,33	1,32
19/01/1993	2,74	2,14	2,04	1,73	1,50	1,39	1,34	1,32
26/01/1993	2,79	2,17	2,07	1,76	1,50	1,39	1,34	1,32
02/02/1993	2,81	2,19	2,07	1,76	1,50	1,37	1,32	1,29
09/02/1993	2,81	2,19	2,07	1,76	1,47	1,34	1,29	1,27
16/02/1993	2,81	2,19	2,07	1,73	1,45	1,32	1,24	1,21
23/02/1993	2,81	2,19	2,07	1,73	1,45	1,32	1,24	1,21
02/03/1993	2,87	2,25	2,12	1,76	1,47	1,32	1,24	1,21
09/03/1993	2,89	2,30	2,17	1,81	1,50	1,32	1,24	1,21
16/03/1993	2,92	2,32	2,19	1,83	1,52	1,34	1,24	1,21
23/03/1993	2,92	2,32	2,19	1,83	1,52	1,34	1,24	1,21
30/03/1993	2,89	2,30	2,17	1,81	1,50	1,32	1,21	1,19
06/04/1993	2,89	2,30	2,17	1,81	1,50	1,32	1,21	1,19
13/04/1993	2,89	2,30	2,17	1,81	1,50	1,32	1,21	1,19
20/04/1993	2,87	2,27	2,14	1,78	1,47	1,29	1,19	1,16
27/04/1993	2,81	2,22	2,09	1,73	1,42	1,24	1,14	1,11
04/05/1993	2,76	2,17	2,04	1,68	1,37	1,19	1,08	1,06
11/05/1993	2,74	2,14	2,01	1,68	1,42	1,21	1,08	1,06
18/05/1993	2,74	2,14	2,01	1,70	1,45	1,24	1,08	1,06
01/06/1993	2,63	2,07	1,91	1,65	1,50	1,24	1,08	1,06
08/06/1993	2,53	1,99	1,83	1,60	1,45	1,21	1,06	1,03
15/06/1993	2,48	1,94	1,78	1,55	1,42	1,19	1,03	1,01
22/06/1993	2,43	1,89	1,76	1,52	1,42	1,19	1,03	1,01
29/06/1993	2,38	1,83	1,70	1,50	1,39	1,16	1,03	1,01
06/07/1993	2,32	1,78	1,68	1,50	1,39	1,21	1,08	1,06
13/07/1993	2,32	1,78	1,68	1,50	1,39	1,21	1,08	1,06
20/07/1993	2,32	1,78	1,68	1,50	1,39	1,21	1,08	1,06
27/07/1993	2,25	1,70	1,63	1,47	1,39	1,21	1,11	1,08
03/08/1993	2,17	1,63	1,58	1,42	1,39	1,21	1,14	1,11
10/08/1993	2,12	1,58	1,52	1,39	1,37	1,21	1,14	1,11
24/08/1993	2,07	1,52	1,47	1,37	1,37	1,21	1,14	1,11
31/08/1993	2,01	1,47	1,42	1,32	1,29	1,21	1,14	1,11
07/09/1993	1,96	1,42	1,37	1,29	1,29	1,21	1,14	1,11
14/09/1993	1,96	1,42	1,37	1,29	1,29	1,21	1,14	1,11
21/09/1993	2,01	1,47	1,42	1,34	1,34	1,27	1,21	1,19
28/09/1993	2,01	1,50	1,45	1,37	1,37	1,32	1,27	1,24
05/10/1993	1,98	1,46	1,41	1,37	1,34	1,29	1,27	1,24
12/10/1993	1,96	1,45	1,39	1,34	1,32	1,27	1,24	1,21
19/10/1993	1,96	1,45	1,39	1,34	1,32	1,27	1,24	1,21
26/10/1993	1,96	1,45	1,39	1,34	1,32	1,27	1,24	1,21
02/11/1993	1,96	1,45	1,39	1,32	1,29	1,24	1,21	1,19
09/11/1993	1,94	1,42	1,37	1,29	1,27	1,21	1,19	1,16
16/11/1993	1,94	1,42	1,37	1,27	1,24	1,19	1,16	1,14
23/11/1993	1,91	1,39	1,34	1,21	1,19	1,14	1,11	1,08
30/11/1993	1,91	1,39	1,34	1,21	1,19	1,14	1,11	1,08
07/12/1993	1,99	1,45	1,39	1,24	1,19	1,14	1,14	1,11
14/12/1993	2,04	1,50	1,42	1,27	1,21	1,16	1,16	1,14
21/12/1993	2,09	1,55	1,47	1,29	1,21	1,16	1,16	1,14
28/12/1993	2,14	1,60	1,52	1,32	1,21	1,14	1,14	1,11
MEDIA	2,40	1,84	1,74	1,53	1,38	1,25	1,18	1,15

REGGIO EMILIA 1993

SETTIMANE	SUINI DA MACELLO (€/Kg)					
	90/115	115/130	130/145	145/160	160/180	> 180
05/01/1993	1,265	1,198	1,219	1,276	1,291	1,239
12/01/1993	1,291	1,224	1,245	1,301	1,317	1,265
19/01/1993	1,317	1,250	1,270	1,327	1,343	1,291
26/01/1993	1,276	1,209	1,229	1,286	1,301	1,250
02/02/1993	1,214	1,157	1,178	1,234	1,250	1,198
09/02/1993	1,162	1,116	1,136	1,193	1,209	1,157
16/02/1993	1,131	1,085	1,105	1,162	1,178	1,126
23/02/1993	1,131	1,085	1,105	1,162	1,178	1,126
02/03/1993	1,136	1,085	1,110	1,167	1,183	1,131
09/03/1993	1,136	1,085	1,110	1,167	1,183	1,131
16/03/1993	1,136	1,090	1,110	1,167	1,183	1,131
23/03/1993	1,085	1,038	1,059	1,116	1,131	1,079
30/03/1993	1,043	0,997	1,017	1,074	1,090	1,038
06/04/1993	1,048	1,002	1,023	1,079	1,095	1,043
13/04/1993	1,064	1,017	1,038	1,095	1,110	1,059
20/04/1993	1,028	0,981	1,002	1,059	1,074	1,023
27/04/1993	0,986	0,940	0,961	1,017	1,033	0,981
04/05/1993	0,986	0,924	0,945	1,002	1,017	0,966
11/05/1993	0,981	0,919	0,940	0,997	1,012	0,961
18/05/1993	0,981	0,919	0,940	0,997	1,012	0,961
01/06/1993	0,966	0,878	0,899	0,940	0,955	0,904
08/06/1993	0,945	0,857	0,878	0,919	0,935	0,883
15/06/1993	0,945	0,857	0,878	0,919	0,935	0,883
22/06/1993	0,981	0,873	0,888	0,924	0,940	0,883
29/06/1993	1,007	0,899	0,909	0,945	0,961	0,883
06/07/1993	1,054	0,935	0,945	0,981	0,997	0,919
13/07/1993	1,054	0,935	0,945	0,981	0,997	0,919
20/07/1993	1,054	0,935	0,945	0,981	0,997	0,919
27/07/1993	1,054	0,935	0,945	0,981	0,997	0,919
03/08/1993	1,085	0,940	0,950	0,986	1,002	0,924
10/08/1993	1,110	0,945	0,955	0,992	1,007	0,930
24/08/1993	1,126	0,945	0,955	0,992	1,007	0,930
31/08/1993	1,126	0,945	0,955	0,992	1,007	0,930
07/09/1993	1,141	0,961	0,971	1,007	1,023	0,945
14/09/1993	1,198	1,017	1,028	1,064	1,079	1,002
21/09/1993	1,317	1,116	1,126	1,162	1,178	1,100
28/09/1993	1,317	1,126	1,136	1,172	1,188	1,110
05/10/1993	1,265	1,100	1,110	1,136	1,152	1,074
12/10/1993	1,214	1,085	1,095	1,121	1,136	1,059
19/10/1993	1,214	1,105	1,116	1,141	1,157	1,079
26/10/1993	1,214	1,105	1,116	1,147	1,162	1,085
02/11/1993	1,209	1,100	1,110	1,141	1,157	1,079
09/11/1993	1,198	1,090	1,100	1,131	1,147	1,069
16/11/1993	1,162	1,059	1,069	1,100	1,116	1,038
23/11/1993	1,110	1,028	1,038	1,069	1,085	1,007
30/11/1993	1,126	1,043	1,054	1,085	1,100	1,023
07/12/1993	1,167	1,085	1,095	1,126	1,141	1,064
14/12/1993	1,172	1,090	1,100	1,131	1,147	1,069
21/12/1993	1,157	1,074	1,090	1,121	1,136	1,059
28/12/1993	1,136	1,054	1,069	1,100	1,116	1,038
MEDIA	1,124	1,029	1,044	1,087	1,103	1,038

REGGIO EMILIA 1993
SUINI D'ALLEVAMENTO
 (Euro/Kg)



REGGIO EMILIA 1993
SUINI DA MACELLO
 (Euro/Kg)

