



REGGIO EMILIA 2007

CAMERA DI COMMERCIO DI REGGIO EMILIA

Categoria: SUINI VIVI

Prezzi: (Franco Partenza) Per Kg peso vivo - IVA esclusa

di Cosmino Giovanni Basile

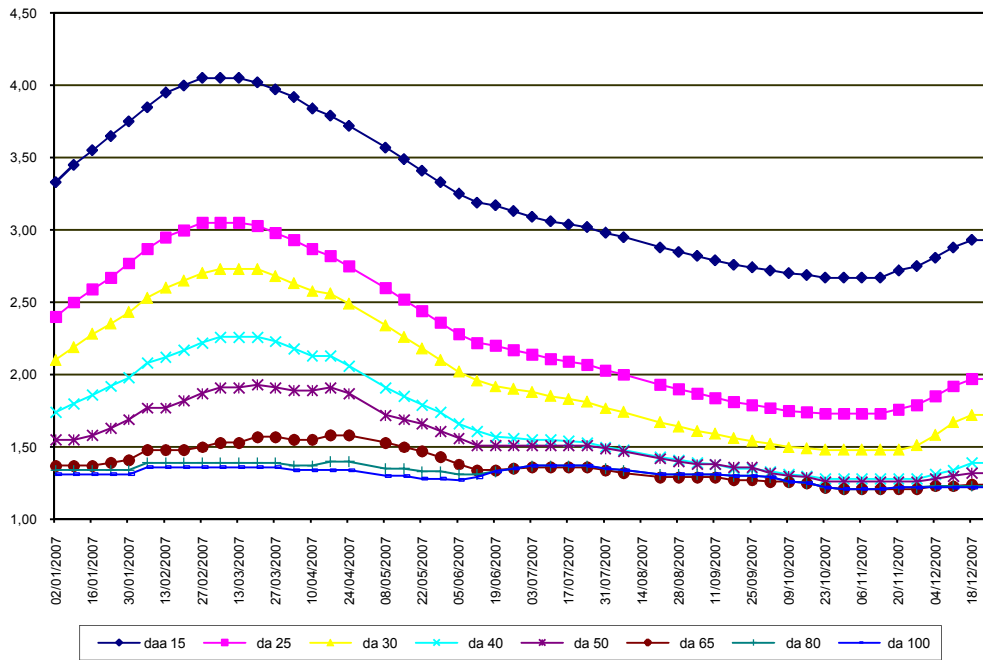
SETTIMANE	SUINI D'ALLEVAMENTO (€/Kg)								
	da 6	da 15	da 25	da 30	da 40	da 50	da 65	da 80	da 100
02/01/2007	6,07	3,33	2,40	2,10	1,74	1,55	1,37	1,34	1,31
09/01/2007	6,20	3,45	2,50	2,19	1,80	1,55	1,37	1,34	1,31
16/01/2007	6,30	3,55	2,59	2,28	1,86	1,58	1,37	1,34	1,31
23/01/2007	6,45	3,65	2,67	2,35	1,92	1,63	1,39	1,34	1,31
30/01/2007	6,60	3,75	2,77	2,43	1,98	1,69	1,41	1,34	1,31
06/02/2007	6,70	3,85	2,87	2,53	2,08	1,77	1,48	1,39	1,36
13/02/2007	6,80	3,95	2,95	2,60	2,12	1,77	1,48	1,39	1,36
20/02/2007	6,85	4,00	3,00	2,65	2,17	1,82	1,48	1,39	1,36
27/02/2007	6,90	4,05	3,05	2,70	2,22	1,87	1,50	1,39	1,36
06/03/2007	6,90	4,05	3,05	2,73	2,26	1,91	1,53	1,39	1,36
13/03/2007	6,90	4,05	3,05	2,73	2,26	1,91	1,53	1,39	1,36
20/03/2007	6,87	4,02	3,03	2,73	2,26	1,93	1,57	1,39	1,36
27/03/2007	6,82	3,97	2,98	2,68	2,23	1,91	1,57	1,39	1,36
03/04/2007	6,72	3,92	2,93	2,63	2,18	1,89	1,55	1,37	1,34
10/04/2007	6,64	3,84	2,87	2,58	2,13	1,89	1,55	1,37	1,34
17/04/2007	6,59	3,79	2,82	2,56	2,13	1,91	1,58	1,40	1,34
24/04/2007	6,52	3,72	2,75	2,49	2,06	1,87	1,58	1,40	1,34
08/05/2007	6,37	3,57	2,60	2,34	1,91	1,72	1,53	1,35	1,30
15/05/2007	6,29	3,49	2,52	2,26	1,85	1,69	1,50	1,35	1,30
22/05/2007	6,25	3,41	2,44	2,18	1,79	1,66	1,47	1,33	1,28
29/05/2007	6,17	3,33	2,36	2,10	1,74	1,61	1,43	1,33	1,28
05/06/2007	6,09	3,25	2,28	2,02	1,66	1,56	1,38	1,31	1,27
12/06/2007	6,09	3,19	2,22	1,96	1,61	1,51	1,34	1,31	1,29
19/06/2007	6,09	3,17	2,20	1,92	1,57	1,51	1,34	1,33	1,33
26/06/2007	6,04	3,13	2,17	1,90	1,56	1,51	1,35	1,35	1,35
03/07/2007	6,00	3,09	2,14	1,88	1,55	1,51	1,36	1,37	1,37
10/07/2007	5,97	3,06	2,11	1,85	1,55	1,51	1,36	1,37	1,37
17/07/2007	5,95	3,04	2,09	1,83	1,54	1,51	1,36	1,37	1,37
24/07/2007	5,93	3,02	2,07	1,81	1,53	1,51	1,36	1,37	1,37
31/07/2007	5,89	2,98	2,03	1,77	1,50	1,49	1,34	1,35	1,35
07/08/2007	5,86	2,95	2,00	1,74	1,48	1,47	1,32	1,34	1,34
21/08/2007	5,79	2,88	1,93	1,67	1,43	1,42	1,29	1,31	1,31
28/08/2007	5,76	2,85	1,90	1,64	1,41	1,40	1,29	1,31	1,31
04/09/2007	5,73	2,82	1,87	1,61	1,39	1,38	1,29	1,31	1,31
11/09/2007	5,70	2,79	1,84	1,59	1,38	1,38	1,29	1,31	1,31
18/09/2007	5,67	2,76	1,81	1,56	1,35	1,36	1,27	1,30	1,30
25/09/2007	5,65	2,74	1,79	1,54	1,35	1,36	1,27	1,30	1,30
02/10/2007	5,63	2,72	1,77	1,52	1,33	1,32	1,26	1,29	1,29
09/10/2007	5,61	2,70	1,75	1,50	1,31	1,30	1,26	1,26	1,26
16/10/2007	5,60	2,69	1,74	1,49	1,30	1,29	1,25	1,25	1,25
23/10/2007	5,55	2,67	1,73	1,48	1,28	1,26	1,22	1,22	1,22
30/10/2007	5,55	2,67	1,73	1,48	1,28	1,26	1,21	1,21	1,21
06/11/2007	5,55	2,67	1,73	1,48	1,28	1,26	1,21	1,21	1,21
13/11/2007	5,55	2,67	1,73	1,48	1,28	1,26	1,21	1,21	1,21
20/11/2007	5,60	2,72	1,76	1,48	1,28	1,26	1,21	1,22	1,22
27/11/2007	5,64	2,75	1,79	1,51	1,28	1,26	1,21	1,22	1,22
04/12/2007	5,70	2,81	1,85	1,58	1,31	1,28	1,23	1,23	1,22
11/12/2007	5,77	2,88	1,92	1,67	1,34	1,30	1,23	1,23	1,22
18/12/2007	5,82	2,93	1,97	1,72	1,39	1,32	1,24	1,23	1,22
25/12/2007	5,82	2,93	1,97	1,72	1,39	1,32	1,24	1,23	1,22
<b>MEDIA</b>	<b>6,11</b>	<b>3,25</b>	<b>2,28</b>	<b>2,00</b>	<b>1,67</b>	<b>1,54</b>	<b>1,37</b>	<b>1,32</b>	<b>1,30</b>

## REGGIO EMILIA 2007

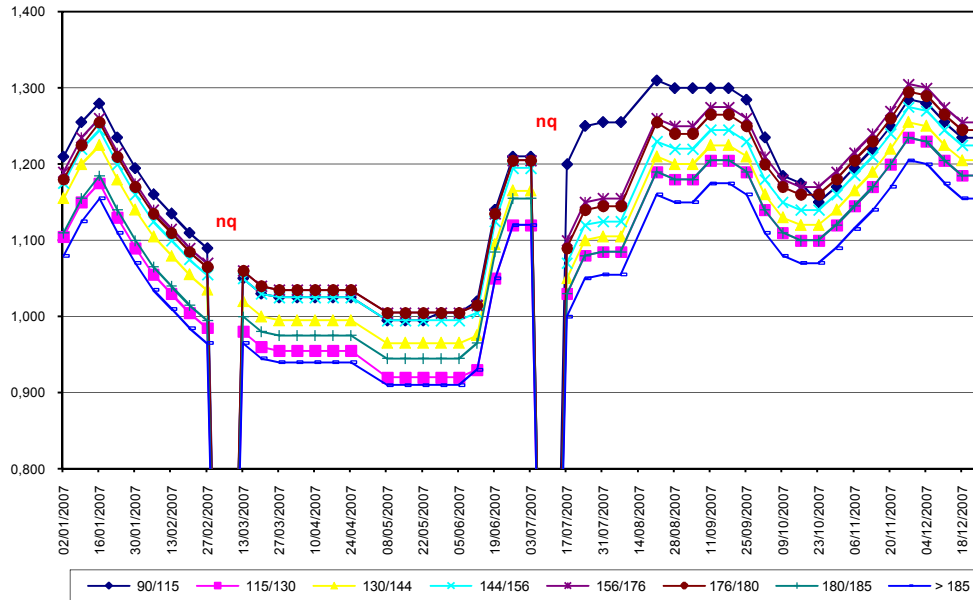
SETTIMANE	SUINI DA MACELLO (€/Kg)							
	90/115	115/130	130/144	144/156	156/176	176/180	180/185	> 185
02/01/2007	1,210	1,105	1,155	1,175	1,190	1,180	1,110	1,080
09/01/2007	1,255	1,150	1,200	1,220	1,235	1,225	1,155	1,125
16/01/2007	1,280	1,175	1,225	1,245	1,260	1,255	1,185	1,155
23/01/2007	1,235	1,130	1,180	1,200	1,215	1,210	1,140	1,110
30/01/2007	1,195	1,090	1,140	1,160	1,175	1,170	1,100	1,070
06/02/2007	1,160	1,055	1,105	1,125	1,140	1,135	1,065	1,035
13/02/2007	1,135	1,030	1,080	1,100	1,115	1,110	1,040	1,010
20/02/2007	1,110	1,005	1,055	1,075	1,090	1,085	1,015	0,985
27/02/2007	1,090	0,985	1,035	1,055	1,070	1,065	0,995	0,965
06/03/2007	nq	nq	nq	nq	nq	nq	nq	nq
13/03/2007	1,050	0,980	1,020	1,050	1,060	1,060	1,000	0,965
20/03/2007	1,030	0,960	1,000	1,030	1,040	1,040	0,980	0,945
27/03/2007	1,025	0,955	0,995	1,025	1,035	1,035	0,975	0,940
03/04/2007	1,025	0,955	0,995	1,025	1,035	1,035	0,975	0,940
10/04/2007	1,025	0,955	0,995	1,025	1,035	1,035	0,975	0,940
17/04/2007	1,025	0,955	0,995	1,025	1,035	1,035	0,975	0,940
24/04/2007	1,025	0,955	0,995	1,025	1,035	1,035	0,975	0,940
08/05/2007	0,995	0,920	0,965	0,995	1,005	1,005	0,945	0,910
15/05/2007	0,995	0,920	0,965	0,995	1,005	1,005	0,945	0,910
22/05/2007	0,995	0,920	0,965	0,995	1,005	1,005	0,945	0,910
29/05/2007	1,005	0,920	0,965	0,995	1,005	1,005	0,945	0,910
05/06/2007	1,005	0,920	0,965	0,995	1,005	1,005	0,945	0,910
12/06/2007	1,020	0,930	0,975	1,005	1,015	1,015	0,965	0,930
19/06/2007	1,140	1,050	1,095	1,125	1,135	1,135	1,085	1,050
26/06/2007	1,210	1,120	1,165	1,195	1,205	1,205	1,155	1,120
03/07/2007	1,210	1,120	1,165	1,195	1,205	1,205	1,155	1,120
10/07/2007	nq	nq	nq	nq	nq	nq	nq	nq
17/07/2007	1,200	1,030	1,050	1,070	1,100	1,090	1,030	1,000
24/07/2007	1,250	1,080	1,100	1,120	1,150	1,140	1,080	1,050
31/07/2007	1,255	1,085	1,105	1,125	1,155	1,145	1,085	1,055
07/08/2007	1,255	1,085	1,105	1,125	1,155	1,145	1,085	1,055
21/08/2007	1,310	1,190	1,210	1,230	1,260	1,255	1,190	1,160
28/08/2007	1,300	1,180	1,200	1,220	1,250	1,240	1,180	1,150
04/09/2007	1,300	1,180	1,200	1,220	1,250	1,240	1,180	1,150
11/09/2007	1,300	1,205	1,225	1,245	1,275	1,265	1,205	1,175
18/09/2007	1,300	1,205	1,225	1,245	1,275	1,265	1,205	1,175
25/09/2007	1,285	1,190	1,210	1,230	1,260	1,250	1,190	1,160
02/10/2007	1,235	1,140	1,160	1,180	1,210	1,200	1,140	1,110
09/10/2007	1,185	1,110	1,130	1,150	1,180	1,170	1,110	1,080
16/10/2007	1,175	1,100	1,120	1,140	1,170	1,160	1,100	1,070
23/10/2007	1,150	1,100	1,120	1,140	1,170	1,160	1,100	1,070
30/10/2007	1,170	1,120	1,140	1,160	1,190	1,180	1,120	1,090
06/11/2007	1,195	1,145	1,165	1,185	1,215	1,205	1,145	1,115
13/11/2007	1,220	1,170	1,190	1,210	1,240	1,230	1,170	1,140
20/11/2007	1,250	1,200	1,220	1,240	1,270	1,260	1,200	1,170
27/11/2007	1,285	1,235	1,255	1,275	1,305	1,295	1,235	1,205
04/12/2007	1,280	1,230	1,250	1,270	1,300	1,290	1,230	1,200
11/12/2007	1,255	1,205	1,225	1,245	1,275	1,265	1,205	1,175
18/12/2007	1,235	1,185	1,205	1,225	1,255	1,245	1,185	1,155
25/12/2007	1,235	1,185	1,205	1,225	1,255	1,245	1,185	1,155
<b>MEDIA</b>	<b>1,168</b>	<b>1,079</b>	<b>1,113</b>	<b>1,136</b>	<b>1,157</b>	<b>1,151</b>	<b>1,090</b>	<b>1,058</b>

nq = non quotati

## REGGIO EMILIA 2007 SUINI D'ALLEVAMENTO (Euro/Kg)



**REGGIO EMILIA 2007**  
**SUINI DA MACELLO**  
 (Euro/Kg)



nq = non quotati

