



BRESCIA 2009

CAMERA DI COMMERCIO DI BRESCIA

Categoria: SUINI VIVI

Prezzi: (Franco Partenza) Per Kg peso vivo - IVA esclusa

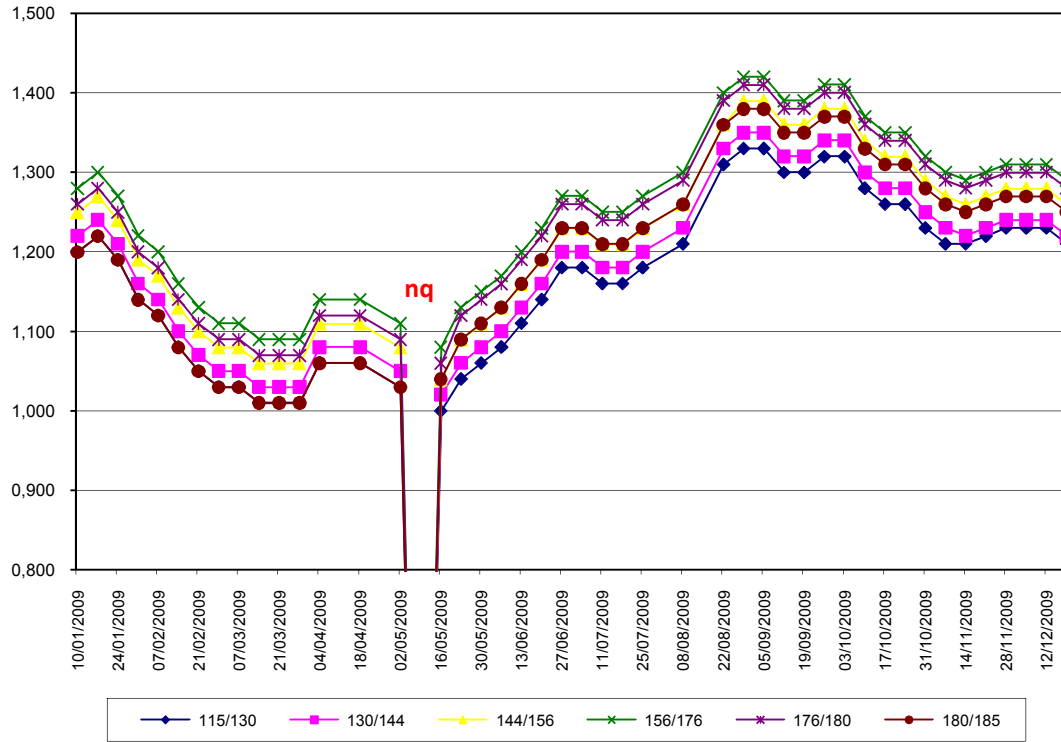
SETTIMANE	SUINI D'ALLEVAMENTO €/Kg)							
	< a 15	da 25	da 30	da 40	da 50	da 65	da 80	da 100
10/01/2009	3,52	2,56	2,40	2,01	1,86	1,60	1,40	1,38
17/01/2009	3,57	2,60	2,43	2,03	1,86	1,60	1,40	1,38
24/01/2009	3,60	2,63	2,46	2,05	1,86	1,60	1,40	1,38
31/01/2009	3,62	2,65	2,48	2,05	1,86	1,60	1,40	1,38
07/02/2009	3,62	2,65	2,48	2,05	1,86	1,60	1,40	1,38
14/02/2009	3,62	2,65	2,48	2,05	1,86	1,60	1,40	1,38
21/02/2009	3,62	2,65	2,48	2,05	1,86	1,60	1,40	1,38
28/02/2009	3,62	2,65	2,48	2,05	1,86	1,60	1,40	1,36
07/03/2009	3,62	2,65	2,48	2,05	1,86	1,60	1,40	1,36
14/03/2009	3,60	2,63	2,46	2,03	1,86	1,60	1,40	1,36
21/03/2009	3,60	2,63	2,46	2,03	1,86	1,60	1,40	1,36
28/03/2009	3,60	2,63	2,46	2,03	1,86	1,60	1,40	1,36
04/04/2009	3,60	2,63	2,46	2,03	1,86	1,60	1,40	1,36
18/04/2009	3,60	2,63	2,48	2,05	1,88	1,62	1,40	1,36
02/05/2009	3,60	2,63	2,50	2,07	1,90	1,62	1,40	1,36
09/05/2009	3,60	2,63	2,50	2,07	1,90	1,62	1,40	1,36
16/05/2009	3,60	2,63	2,50	2,07	1,90	1,62	1,40	1,36
23/05/2009	3,60	2,63	2,50	2,07	1,90	1,62	1,40	1,36
30/05/2009	3,60	2,63	2,50	2,07	1,90	1,62	1,40	1,36
06/06/2009	3,58	2,61	2,48	2,07	1,90	1,62	1,40	1,36
13/06/2009	3,53	2,56	2,45	2,06	1,90	1,62	1,40	1,36
20/06/2009	3,47	2,52	2,44	2,06	1,90	1,62	1,40	1,36
27/06/2009	3,40	2,50	2,42	2,06	1,90	1,62	1,40	1,40
04/07/2009	3,35	2,45	2,37	2,03	1,90	1,62	1,40	1,40
11/07/2009	3,31	2,41	2,33	2,03	1,90	1,62	1,40	1,40
18/07/2009	3,26	2,36	2,30	2,00	1,87	1,62	1,40	1,40
25/07/2009	3,23	2,33	2,27	1,98	1,87	1,62	1,40	1,40
08/08/2009	3,21	2,31	2,25	1,96	1,85	1,60	1,40	1,40
22/08/2009	3,11	2,21	2,15	1,86	1,75	1,60	1,40	1,40
29/08/2009	3,11	2,21	2,10	1,80	1,70	1,58	1,40	1,40
05/09/2009	3,11	2,21	2,10	1,80	1,70	1,58	1,40	1,40
12/09/2009	3,11	2,20	2,03	1,73	1,65	1,53	1,40	1,40
19/09/2009	3,11	2,20	2,03	1,73	1,65	1,53	1,40	1,40
26/09/2009	3,11	2,20	2,00	1,70	1,62	1,50	1,40	1,40
03/10/2009	3,11	2,20	2,00	1,70	1,62	1,50	1,40	1,40
10/10/2009	3,11	2,20	1,95	1,65	1,57	1,48	1,38	1,38
17/10/2009	3,11	2,20	1,90	1,60	1,52	1,45	1,38	1,38
24/10/2009	3,11	2,20	1,90	1,60	1,52	1,45	1,38	1,38
31/10/2009	3,11	2,20	1,90	1,55	1,47	1,42	1,35	1,35
07/11/2009	3,15	2,20	1,90	1,52	1,44	1,40	1,33	1,32
14/11/2009	3,15	2,20	1,90	1,52	1,44	1,40	1,33	1,32
21/11/2009	3,17	2,22	1,90	1,52	1,44	1,40	1,33	1,32
28/11/2009	3,19	2,24	1,92	1,54	1,46	1,40	1,33	1,32
05/12/2009	3,22	2,24	1,92	1,54	1,46	1,40	1,33	1,32
12/12/2009	3,27	2,28	1,35	1,55	1,46	1,40	1,33	1,32
19/12/2009	3,32	2,32	1,98	1,57	1,46	1,40	1,33	1,32
MEDIA	3,38	2,43	2,24	1,88	1,75	1,55	1,39	1,37

BRESCIA 2009

SETTIMANE	SUINI DA MACELLO (€/Kg)							
	90/115	115/130	130/144	144/156	156/176	176/180	180/185	> 185
10/01/2009	nq	1,200	1,220	1,250	1,280	1,260	1,200	1,170
17/01/2009	nq	1,220	1,240	1,270	1,300	1,280	1,220	1,190
24/01/2009	nq	1,190	1,210	1,240	1,270	1,250	1,190	1,160
31/01/2009	nq	1,140	1,160	1,190	1,220	1,200	1,140	1,110
07/02/2009	nq	1,120	1,140	1,170	1,200	1,180	1,120	1,090
14/02/2009	nq	1,080	1,100	1,130	1,160	1,140	1,080	1,050
21/02/2009	nq	1,050	1,070	1,100	1,130	1,110	1,050	1,020
28/02/2009	nq	1,030	1,050	1,080	1,110	1,090	1,030	1,000
07/03/2009	nq	1,030	1,050	1,080	1,110	1,090	1,030	1,000
14/03/2009	nq	1,010	1,030	1,060	1,090	1,070	1,010	0,980
21/03/2009	nq	1,010	1,030	1,060	1,090	1,070	1,010	0,980
28/03/2009	nq	1,010	1,030	1,060	1,090	1,070	1,010	0,980
04/04/2009	nq	1,060	1,080	1,110	1,140	1,120	1,060	1,030
18/04/2009	nq	1,060	1,080	1,110	1,140	1,120	1,060	1,030
02/05/2009	nq	1,030	1,050	1,080	1,110	1,090	1,030	1,000
09/05/2009	nq	nq	nq	nq	nq	nq	nq	nq
16/05/2009	nq	1,000	1,020	1,040	1,080	1,060	1,040	1,000
23/05/2009	nq	1,040	1,060	1,090	1,130	1,120	1,090	1,050
30/05/2009	nq	1,060	1,080	1,110	1,150	1,140	1,110	1,070
06/06/2009	nq	1,080	1,100	1,130	1,170	1,160	1,130	1,090
13/06/2009	nq	1,110	1,130	1,160	1,200	1,190	1,160	1,120
20/06/2009	nq	1,140	1,160	1,190	1,230	1,220	1,190	1,150
27/06/2009	nq	1,180	1,200	1,230	1,270	1,260	1,230	1,190
04/07/2009	nq	1,180	1,200	1,230	1,270	1,260	1,230	1,190
11/07/2009	nq	1,160	1,180	1,210	1,250	1,240	1,210	1,170
18/07/2009	nq	1,160	1,180	1,210	1,250	1,240	1,210	1,170
25/07/2009	nq	1,180	1,200	1,230	1,270	1,260	1,230	1,190
08/08/2009	nq	1,210	1,230	1,260	1,300	1,290	1,260	1,220
22/08/2009	nq	1,310	1,330	1,360	1,400	1,390	1,360	1,320
29/08/2009	nq	1,330	1,350	1,390	1,420	1,410	1,380	1,340
05/09/2009	nq	1,330	1,350	1,390	1,420	1,410	1,380	1,340
12/09/2009	nq	1,300	1,320	1,360	1,390	1,380	1,350	1,310
19/09/2009	nq	1,300	1,320	1,360	1,390	1,380	1,350	1,310
26/09/2009	nq	1,320	1,340	1,380	1,410	1,400	1,370	1,330
03/10/2009	nq	1,320	1,340	1,380	1,410	1,400	1,370	1,330
10/10/2009	nq	1,280	1,300	1,340	1,370	1,360	1,330	1,290
17/10/2009	nq	1,260	1,280	1,320	1,350	1,340	1,310	1,270
24/10/2009	nq	1,260	1,280	1,320	1,350	1,340	1,310	1,270
31/10/2009	nq	1,230	1,250	1,290	1,320	1,310	1,280	1,240
07/11/2009	nq	1,210	1,230	1,270	1,300	1,290	1,260	1,220
14/11/2009	nq	1,210	1,220	1,260	1,290	1,280	1,250	1,210
21/11/2009	nq	1,220	1,230	1,270	1,300	1,290	1,260	1,220
28/11/2009	nq	1,230	1,240	1,280	1,310	1,300	1,270	1,230
05/12/2009	nq	1,230	1,240	1,280	1,310	1,300	1,270	1,230
12/12/2009	nq	1,230	1,240	1,280	1,310	1,300	1,270	1,230
19/12/2009	nq	1,210	1,220	1,260	1,290	1,280	1,250	1,210
MEDIA	nq	1,167	1,186	1,219	1,252	1,239	1,199	1,162

nq = non quotati

BRESCIA 2009
SUINI DA MACELLO
 (Euro/Kg)



nq = non quotati

