



MANTOVA 2010

CAMERA DI COMMERCIO DI MANTOVA

Categoria: SUINI VIVI

Prezzi: (Franco Partenza) Per Kg peso vivo - IVA esclusa

di Cosmino Giovanni Basile

| SETTIMANE | SUINI D'ALLEVAMENTO (€/Kg) | | | | | | | | |
|--------------|----------------------------|-------------|-------------|-------------|-------------|-------------|-------------|-------------|-------------|
| | da 6 | da 15 | da 25 | da 30 | da 40 | da 50 | da 65 | da 80 | da 100 |
| 07/01/2010 | nq | 3,51 | 2,46 | 2,10 | 1,68 | 1,46 | 1,37 | 1,32 | 1,31 |
| 14/01/2010 | nq | 3,59 | 2,53 | 2,17 | 1,74 | 1,50 | 1,39 | 1,32 | 1,31 |
| 21/01/2010 | nq | 3,66 | 2,60 | 2,25 | 1,81 | 1,53 | 1,41 | 1,32 | 1,31 |
| 28/01/2010 | nq | 3,72 | 2,66 | 2,32 | 1,87 | 1,55 | 1,43 | 1,32 | 1,31 |
| 04/02/2010 | nq | 3,77 | 2,71 | 2,39 | 1,93 | 1,59 | 1,45 | 1,32 | 1,31 |
| 11/02/2010 | nq | 3,82 | 2,76 | 2,44 | 1,98 | 1,64 | 1,47 | 1,32 | 1,31 |
| 18/02/2010 | nq | 3,86 | 2,80 | 2,48 | 2,02 | 1,68 | 1,47 | 1,32 | 1,31 |
| 25/02/2010 | nq | 3,88 | 2,83 | 2,52 | 2,06 | 1,71 | 1,47 | 1,32 | 1,31 |
| 04/03/2010 | nq | 3,89 | 2,85 | 2,55 | 2,09 | 1,73 | 1,47 | 1,32 | 1,31 |
| 11/03/2010 | nq | 3,89 | 2,85 | 2,56 | 2,11 | 1,76 | 1,49 | 1,32 | 1,31 |
| 18/03/2010 | nq | 3,89 | 2,85 | 2,56 | 2,13 | 1,78 | 1,50 | 1,32 | 1,31 |
| 25/03/2010 | nq | 3,89 | 2,85 | 2,56 | 2,135 | 1,79 | 1,51 | 1,32 | 1,31 |
| 01/04/2010 | nq | 3,89 | 2,85 | 2,56 | 2,135 | 1,79 | 1,51 | 1,32 | 1,31 |
| 08/04/2010 | nq | 3,88 | 2,84 | 2,56 | 2,135 | 1,79 | 1,52 | 1,32 | 1,31 |
| 15/04/2010 | nq | 3,86 | 2,82 | 2,555 | 2,135 | 1,79 | 1,52 | 1,32 | 1,31 |
| 22/04/2010 | nq | 3,82 | 2,79 | 2,54 | 2,135 | 1,79 | 1,52 | 1,32 | 1,31 |
| 29/04/2010 | nq | 3,77 | 2,75 | 2,51 | 2,12 | 1,79 | 1,52 | 1,32 | 1,31 |
| 06/05/2010 | nq | 3,73 | 2,72 | 2,48 | 2,11 | 1,79 | 1,52 | 1,32 | 1,31 |
| 13/05/2010 | nq | 3,69 | 2,69 | 2,45 | 2,09 | 1,79 | 1,52 | 1,32 | 1,31 |
| 20/05/2010 | nq | 3,66 | 2,66 | 2,42 | 2,075 | 1,79 | 1,52 | 1,32 | 1,31 |
| 27/05/2010 | nq | 3,64 | 2,64 | 2,405 | 2,06 | 1,79 | 1,52 | 1,32 | 1,31 |
| 03/06/2010 | nq | 3,62 | 2,61 | 2,38 | 2,045 | 1,79 | 1,52 | 1,33 | 1,32 |
| 10/06/2010 | nq | 3,61 | 2,59 | 2,36 | 2,035 | 1,79 | 1,52 | 1,34 | 1,33 |
| 17/06/2010 | nq | 3,61 | 2,57 | 2,34 | 2,025 | 1,79 | 1,52 | 1,35 | 1,35 |
| 24/06/2010 | nq | 3,60 | 2,55 | 2,32 | 2,01 | 1,79 | 1,52 | 1,35 | 1,35 |
| 01/07/2010 | nq | 3,56 | 2,50 | 2,29 | 1,98 | 1,77 | 1,52 | 1,35 | 1,35 |
| 08/07/2010 | nq | 3,52 | 2,46 | 2,24 | 1,94 | 1,74 | 1,52 | 1,35 | 1,35 |
| 15/07/2010 | nq | 3,48 | 2,42 | 2,20 | 1,91 | 1,71 | 1,52 | 1,35 | 1,35 |
| 22/07/2010 | nq | 3,43 | 2,37 | 2,16 | 1,87 | 1,68 | 1,51 | 1,35 | 1,35 |
| 29/07/2010 | nq | 3,38 | 2,33 | 2,12 | 1,83 | 1,66 | 1,50 | 1,35 | 1,35 |
| 05/08/2010 | nq | 3,35 | 2,29 | 2,08 | 1,79 | 1,63 | 1,49 | 1,35 | 1,35 |
| 12/08/2010 | nq | 3,30 | 2,25 | 2,05 | 1,76 | 1,61 | 1,49 | 1,35 | 1,35 |
| 19/08/2010 | nq | 3,27 | 2,21 | 2,00 | 1,73 | 1,59 | 1,48 | 1,35 | 1,35 |
| 26/08/2010 | nq | 3,23 | 2,17 | 1,97 | 1,69 | 1,57 | 1,47 | 1,35 | 1,35 |
| 02/09/2010 | nq | 3,21 | 2,14 | 1,94 | 1,66 | 1,53 | 1,45 | 1,35 | 1,35 |
| 09/09/2010 | nq | 3,17 | 2,10 | 1,90 | 1,63 | 1,50 | 1,42 | 1,35 | 1,35 |
| 16/09/2010 | nq | 3,13 | 2,07 | 1,87 | 1,60 | 1,47 | 1,41 | 1,35 | 1,35 |
| 23/09/2010 | nq | 3,11 | 2,04 | 1,84 | 1,57 | 1,45 | 1,40 | 1,35 | 1,35 |
| 30/09/2010 | nq | 3,08 | 2,02 | 1,81 | 1,54 | 1,43 | 1,40 | 1,35 | 1,35 |
| 07/10/2010 | nq | 3,08 | 1,99 | 1,78 | 1,51 | 1,41 | 1,40 | 1,35 | 1,35 |
| 14/10/2010 | nq | 3,08 | 1,97 | 1,75 | 1,49 | 1,40 | 1,40 | 1,35 | 1,35 |
| 21/10/2010 | nq | 3,08 | 1,96 | 1,73 | 1,47 | 1,39 | 1,38 | 1,34 | 1,33 |
| 28/10/2010 | nq | 3,08 | 1,96 | 1,72 | 1,46 | 1,38 | 1,37 | 1,33 | 1,32 |
| 04/11/2010 | nq | 3,08 | 1,96 | 1,72 | 1,46 | 1,36 | 1,35 | 1,32 | 1,31 |
| 11/11/2010 | nq | 3,08 | 1,96 | 1,72 | 1,46 | 1,36 | 1,35 | 1,32 | 1,31 |
| 18/11/2010 | nq | 3,08 | 1,96 | 1,72 | 1,46 | 1,36 | 1,35 | 1,32 | 1,31 |
| 25/11/2010 | nq | 3,08 | 1,96 | 1,72 | 1,46 | 1,36 | 1,35 | 1,32 | 1,31 |
| 02/12/2010 | nq | 3,09 | 1,96 | 1,72 | 1,46 | 1,36 | 1,35 | 1,32 | 1,31 |
| 09/12/2010 | nq | 3,11 | 1,97 | 1,72 | 1,46 | 1,36 | 1,35 | 1,32 | 1,31 |
| 16/12/2010 | nq | 3,13 | 1,98 | 1,73 | 1,46 | 1,36 | 1,35 | 1,32 | 1,31 |
| 23/12/2010 | nq | 3,16 | 2,00 | 1,75 | 1,46 | 1,36 | 1,35 | 1,32 | 1,31 |
| 30/12/2010 | nq | 3,19 | 2,03 | 1,77 | 1,47 | 1,36 | 1,35 | 1,32 | 1,31 |
| MEDIA | nq | 3,47 | 2,40 | 2,15 | 1,81 | 1,60 | 1,45 | 1,33 | 1,33 |

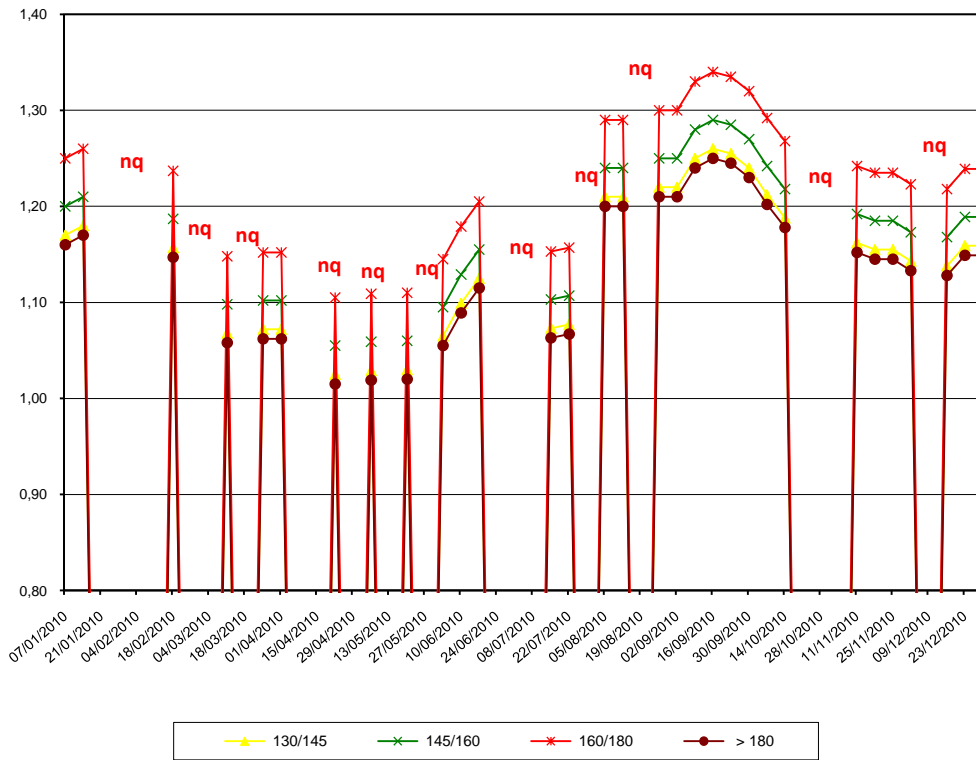
nq = non quotati

MANTOVA 2010

| SETTIMANE | SUINI DA MACELLO (€/Kg) | | | | | |
|--------------|-------------------------|-----------|--------------|--------------|--------------|--------------|
| | 90/115 | 115/130 | 130/145 | 145/160 | 160/180 | > 180 |
| 07/01/2010 | nq | nq | 1,170 | 1,200 | 1,250 | 1,160 |
| 14/01/2010 | nq | nq | 1,180 | 1,210 | 1,260 | 1,170 |
| 21/01/2010 | nq | nq | nq | nq | nq | nq |
| 28/01/2010 | nq | nq | nq | nq | nq | nq |
| 04/02/2010 | nq | nq | nq | nq | nq | nq |
| 11/02/2010 | nq | nq | nq | nq | nq | nq |
| 18/02/2010 | nq | nq | 1,16 | 1,19 | 1,24 | 1,147 |
| 25/02/2010 | nq | nq | nq | nq | nq | nq |
| 04/03/2010 | nq | nq | nq | nq | nq | nq |
| 11/03/2010 | nq | nq | 1,068 | 1,098 | 1,148 | 1,058 |
| 18/03/2010 | nq | nq | nq | nq | nq | nq |
| 25/03/2010 | nq | nq | 1,072 | 1,102 | 1,152 | 1,062 |
| 01/04/2010 | nq | nq | 1,072 | 1,102 | 1,152 | 1,062 |
| 08/04/2010 | nq | nq | nq | nq | nq | nq |
| 15/04/2010 | nq | nq | nq | nq | nq | nq |
| 22/04/2010 | nq | nq | 1,025 | 1,055 | 1,105 | 1,015 |
| 29/04/2010 | nq | nq | nq | nq | nq | nq |
| 06/05/2010 | nq | nq | 1,029 | 1,059 | 1,109 | 1,019 |
| 13/05/2010 | nq | nq | nq | nq | nq | nq |
| 20/05/2010 | nq | nq | 1,030 | 1,060 | 1,110 | 1,020 |
| 27/05/2010 | nq | nq | nq | nq | nq | nq |
| 03/06/2010 | nq | nq | 1,065 | 1,095 | 1,145 | 1,055 |
| 10/06/2010 | nq | nq | 1,099 | 1,129 | 1,179 | 1,089 |
| 17/06/2010 | nq | nq | 1,125 | 1,155 | 1,205 | 1,115 |
| 24/06/2010 | nq | nq | nq | nq | nq | nq |
| 01/07/2010 | nq | nq | nq | nq | nq | nq |
| 08/07/2010 | nq | nq | nq | nq | nq | nq |
| 15/07/2010 | nq | nq | 1,073 | 1,103 | 1,153 | 1,063 |
| 22/07/2010 | nq | nq | 1,077 | 1,107 | 1,157 | 1,067 |
| 29/07/2010 | nq | nq | nq | nq | nq | nq |
| 05/08/2010 | nq | nq | 1,210 | 1,240 | 1,290 | 1,200 |
| 12/08/2010 | nq | nq | 1,210 | 1,240 | 1,290 | 1,200 |
| 19/08/2010 | nq | nq | nq | nq | nq | nq |
| 26/08/2010 | nq | nq | 1,220 | 1,250 | 1,300 | 1,210 |
| 02/09/2010 | nq | nq | 1,220 | 1,250 | 1,300 | 1,210 |
| 09/09/2010 | nq | nq | 1,250 | 1,280 | 1,330 | 1,240 |
| 16/09/2010 | nq | nq | 1,260 | 1,290 | 1,340 | 1,250 |
| 23/09/2010 | nq | nq | 1,255 | 1,285 | 1,335 | 1,245 |
| 30/09/2010 | nq | nq | 1,240 | 1,270 | 1,320 | 1,230 |
| 07/10/2010 | nq | nq | 1,212 | 1,242 | 1,292 | 1,202 |
| 14/10/2010 | nq | nq | 1,188 | 1,218 | 1,268 | 1,178 |
| 21/10/2010 | nq | nq | nq | nq | nq | nq |
| 28/10/2010 | nq | nq | nq | nq | nq | nq |
| 04/11/2010 | nq | nq | nq | nq | nq | nq |
| 11/11/2010 | nq | nq | 1,162 | 1,192 | 1,242 | 1,152 |
| 18/11/2010 | nq | nq | 1,155 | 1,185 | 1,235 | 1,145 |
| 25/11/2010 | nq | nq | 1,155 | 1,185 | 1,235 | 1,145 |
| 02/12/2010 | nq | nq | 1,143 | 1,173 | 1,223 | 1,133 |
| 09/12/2010 | nq | nq | nq | nq | nq | nq |
| 16/12/2010 | nq | nq | 1,138 | 1,168 | 1,218 | 1,128 |
| 23/12/2010 | nq | nq | 1,159 | 1,189 | 1,239 | 1,149 |
| 30/12/2010 | nq | nq | 1,159 | 1,189 | 1,239 | 1,149 |
| MEDIA | nq | nq | 1,148 | 1,178 | 1,228 | 1,138 |

nq = non quotati

MANTOVA 2010
TREND SUINI DA MACELLO
 (Euro/Kg)



nq = non quotati