

Mercato
Mercati nazionali

5.3.10.2



MILANO 2000

CAMERA DI COMMERCIO DI MANTOVA

Categoria: SUINI VIVI

Prezzi: (Franco Partenza) Per Kg peso vivo - IVA esclusa

di Cosmino Giovanni Basile

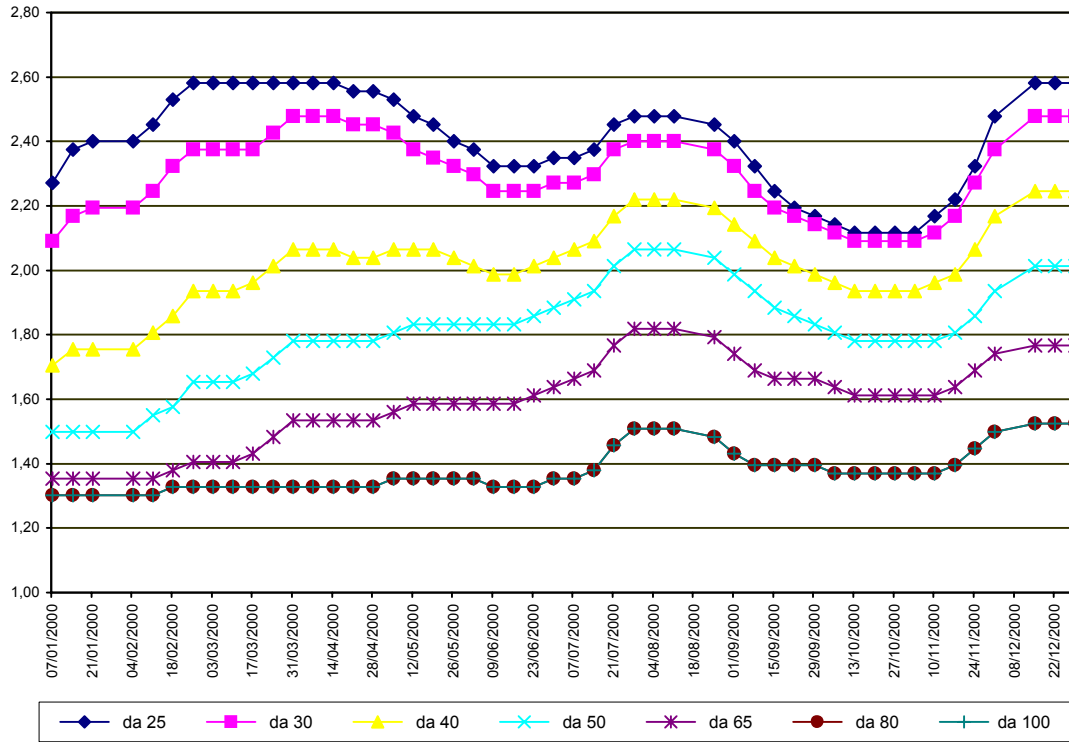
SETTIMANE	SUINI D'ALLEVAMENTO €/Kg)							
	< a 15	da 25	da 30	da 40	da 50	da 65	da 80	da 100
07/01/2000	2,81	2,27	2,09	1,70	1,50	1,35	1,30	1,30
14/01/2000	2,92	2,38	2,17	1,76	1,50	1,35	1,30	1,30
21/01/2000	2,94	2,40	2,19	1,76	1,50	1,35	1,30	1,30
04/02/2000	2,94	2,40	2,19	1,76	1,50	1,35	1,30	1,30
11/02/2000	3,00	2,45	2,25	1,81	1,55	1,35	1,30	1,30
18/02/2000	3,07	2,53	2,32	1,86	1,58	1,38	1,33	1,33
25/02/2000	3,12	2,58	2,38	1,94	1,65	1,40	1,33	1,33
03/03/2000	3,12	2,58	2,38	1,94	1,65	1,40	1,33	1,33
10/03/2000	3,12	2,58	2,38	1,94	1,65	1,40	1,33	1,33
17/03/2000	3,12	2,58	2,38	1,96	1,68	1,43	1,33	1,33
24/03/2000	3,12	2,58	2,43	2,01	1,73	1,48	1,33	1,33
31/03/2000	3,12	2,58	2,48	2,07	1,78	1,53	1,33	1,33
07/04/2000	3,12	2,58	2,48	2,07	1,78	1,53	1,33	1,33
14/04/2000	3,12	2,58	2,48	2,07	1,78	1,53	1,33	1,33
21/04/2000	3,07	2,56	2,45	2,04	1,78	1,53	1,33	1,33
28/04/2000	3,07	2,56	2,45	2,04	1,78	1,53	1,33	1,33
05/05/2000	3,05	2,53	2,43	2,07	1,81	1,56	1,35	1,35
12/05/2000	3,00	2,48	2,38	2,07	1,83	1,59	1,35	1,35
19/05/2000	2,94	2,45	2,35	2,07	1,83	1,59	1,35	1,35
26/05/2000	2,89	2,40	2,32	2,04	1,83	1,59	1,35	1,35
02/06/2000	2,84	2,38	2,30	2,01	1,83	1,59	1,35	1,35
09/06/2000	2,76	2,32	2,25	1,99	1,83	1,59	1,33	1,33
16/06/2000	2,76	2,32	2,25	1,99	1,83	1,59	1,33	1,33
23/06/2000	2,76	2,32	2,25	2,01	1,86	1,61	1,33	1,33
30/06/2000	2,79	2,35	2,27	2,04	1,89	1,64	1,35	1,35
07/07/2000	2,79	2,35	2,27	2,07	1,91	1,66	1,35	1,35
14/07/2000	2,81	2,38	2,30	2,09	1,94	1,69	1,38	1,38
21/07/2000	2,89	2,45	2,38	2,17	2,01	1,77	1,46	1,46
28/07/2000	2,89	2,48	2,40	2,22	2,07	1,82	1,51	1,51
04/08/2000	2,89	2,48	2,40	2,22	2,07	1,82	1,51	1,51
11/08/2000	2,89	2,48	2,40	2,22	2,07	1,82	1,51	1,51
25/08/2000	2,87	2,45	2,38	2,19	2,04	1,79	1,48	1,48
01/09/2000	2,81	2,40	2,32	2,14	1,99	1,74	1,43	1,43
08/09/2000	2,74	2,32	2,25	2,09	1,94	1,69	1,39	1,39
15/09/2000	2,66	2,25	2,19	2,04	1,89	1,66	1,39	1,39
22/09/2000	2,61	2,19	2,17	2,01	1,86	1,66	1,39	1,39
29/09/2000	2,56	2,17	2,14	1,99	1,83	1,66	1,39	1,39
06/10/2000	2,53	2,14	2,12	1,96	1,81	1,64	1,37	1,37
13/10/2000	2,50	2,12	2,09	1,94	1,78	1,61	1,37	1,37
20/10/2000	2,50	2,12	2,09	1,94	1,78	1,61	1,37	1,37
27/10/2000	2,50	2,12	2,09	1,94	1,78	1,61	1,37	1,37
03/11/2000	2,50	2,12	2,09	1,94	1,78	1,61	1,37	1,37
10/11/2000	2,56	2,17	2,12	1,96	1,78	1,61	1,37	1,37
17/11/2000	2,61	2,22	2,17	1,99	1,81	1,64	1,39	1,39
24/11/2000	2,71	2,32	2,27	2,07	1,86	1,69	1,45	1,45
01/12/2000	2,87	2,48	2,38	2,17	1,94	1,74	1,50	1,50
15/12/2000	3,00	2,58	2,48	2,25	2,01	1,77	1,52	1,52
22/12/2000	3,00	2,58	2,48	2,25	2,01	1,77	1,52	1,52
29/12/2000	3,00	2,58	2,48	2,25	2,01	1,77	1,52	1,52
MEDIA	2,86	2,40	2,30	2,02	1,81	1,59	1,38	1,38

nq = non quotati

MILANO 2000

SETTIMANE	SUINI DA MACELLO (€/Kg)						
	90/115	da 115	da 130	da 144	da 156	da 176	> 176
07/01/2000	1,224	1,105	1,131	1,214	1,250	1,250	1,157
14/01/2000	1,162	1,054	1,079	1,162	1,198	1,198	1,105
21/01/2000	1,110	1,002	1,028	1,110	1,147	1,147	1,054
04/02/2000	1,095	0,986	1,012	1,095	1,131	1,131	1,038
11/02/2000	1,121	1,012	1,038	1,121	1,157	1,157	1,064
18/02/2000	1,167	1,059	1,085	1,167	1,203	1,203	1,110
25/02/2000	1,167	1,054	1,079	1,162	1,198	1,198	1,105
03/03/2000	1,141	1,028	1,054	1,136	1,172	1,172	1,079
10/03/2000	1,141	1,028	1,054	1,136	1,172	1,172	1,079
17/03/2000	1,141	1,028	1,054	1,136	1,172	1,172	1,079
24/03/2000	1,141	1,028	1,054	1,136	1,172	1,172	1,079
31/03/2000	1,100	0,986	1,012	1,095	1,131	1,131	1,038
07/04/2000	1,059	0,945	0,971	1,054	1,090	1,090	0,997
14/04/2000	1,059	0,932	0,958	1,041	1,077	1,077	0,984
21/04/2000	1,059	0,940	0,966	1,048	1,085	1,085	0,992
28/04/2000	1,059	0,940	0,966	1,048	1,085	1,085	0,992
05/05/2000	1,059	0,940	0,966	1,048	1,085	1,085	0,992
12/05/2000	1,059	0,940	0,966	1,048	1,085	1,085	0,992
19/05/2000	1,059	0,940	0,966	1,033	1,043	1,033	0,935
26/05/2000	1,033	0,914	0,940	1,002	1,012	0,986	0,888
02/06/2000	1,033	0,893	0,914	0,976	0,981	0,955	0,857
09/06/2000	1,033	0,893	0,914	0,976	0,981	0,966	0,868
16/06/2000	1,085	0,924	0,945	1,007	1,012	1,012	0,904
23/06/2000	1,147	0,986	1,007	1,069	1,074	1,074	0,966
30/06/2000	1,188	1,025	1,046	1,108	1,113	1,113	1,005
07/07/2000	1,162	1,012	1,033	1,095	1,100	1,100	0,992
14/07/2000	1,198	1,048	1,069	1,131	1,136	1,136	1,028
21/07/2000	1,291	1,141	1,162	1,224	1,229	1,229	1,121
28/07/2000	1,369	1,203	1,224	1,286	1,291	1,291	1,183
04/08/2000	1,369	1,203	1,224	1,286	1,291	1,291	1,183
11/08/2000	1,394	1,224	1,245	1,307	1,312	1,312	1,203
25/08/2000	1,446	1,270	1,291	1,353	1,374	1,374	1,265
01/09/2000	1,410	1,239	1,260	1,322	1,343	1,343	1,234
08/09/2000	1,394	1,224	1,245	1,312	1,338	1,338	1,229
15/09/2000	1,420	1,255	1,276	1,343	1,369	1,369	1,260
22/09/2000	1,472	1,332	1,353	1,420	1,446	1,446	1,338
29/09/2000	1,410	1,281	1,301	1,369	1,394	1,394	1,286
06/10/2000	1,394	1,270	1,291	1,358	1,384	1,384	1,276
13/10/2000	1,431	1,307	1,327	1,394	1,420	1,420	1,312
20/10/2000	1,431	1,312	1,332	1,400	1,425	1,425	1,317
27/10/2000	1,415	1,296	1,317	1,384	1,410	1,410	1,301
03/11/2000	1,415	1,296	1,317	1,384	1,410	1,410	1,301
10/11/2000	1,425	1,307	1,327	1,394	1,420	1,420	1,312
17/11/2000	1,462	1,345	1,366	1,433	1,459	1,459	1,351
24/11/2000	1,513	1,405	1,425	1,493	1,518	1,518	1,410
01/12/2000	1,544	1,436	1,456	1,524	1,549	1,549	1,441
15/12/2000	1,544	1,436	1,456	1,524	1,549	1,549	1,441
22/12/2000	1,544	1,436	1,456	1,524	1,549	1,549	1,441
29/12/2000	1,544	1,436	1,456	1,524	1,549	1,549	1,441
MEDIA	1,258	1,129	1,151	1,223	1,247	1,245	1,143

MILANO 2000 SUINI D'ALLEVAMENTO (Euro/Kg)



MILANO 2000
SUINI DA MACELLO
 (Euro/Kg)

