



REGGIO EMILIA 2003

CAMERA DI COMMERCIO DI REGGIO EMILIA

Categoria: SUINI VIVI

Prezzi: (Franco Partenza) Per Kg peso vivo - IVA esclusa

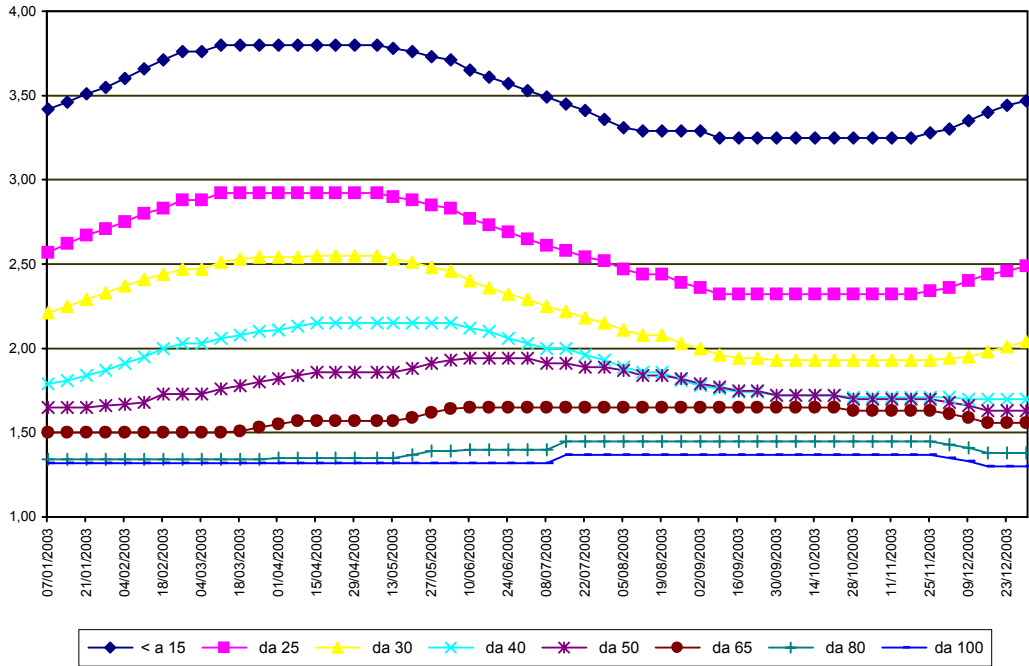
di Cosmino Giovanni Basile

SETTIMANE	SUINI D'ALLEVAMENTO (€/Kg)							
	< a 15	da 25	da 30	da 40	da 50	da 65	da 80	da 100
07/01/2003	3,42	2,57	2,21	1,79	1,65	1,50	1,34	1,32
14/01/2003	3,46	2,62	2,25	1,81	1,65	1,50	1,34	1,32
21/01/2003	3,51	2,67	2,29	1,84	1,65	1,50	1,34	1,32
28/01/2003	3,55	2,71	2,33	1,87	1,66	1,50	1,34	1,32
04/02/2003	3,60	2,75	2,37	1,91	1,67	1,50	1,34	1,32
11/02/2003	3,66	2,80	2,41	1,95	1,68	1,50	1,34	1,32
18/02/2003	3,71	2,83	2,44	2,00	1,73	1,50	1,34	1,32
25/02/2003	3,76	2,88	2,47	2,03	1,73	1,50	1,34	1,32
04/03/2003	3,76	2,88	2,47	2,03	1,73	1,50	1,34	1,32
11/03/2003	3,80	2,92	2,51	2,06	1,76	1,50	1,34	1,32
18/03/2003	3,80	2,92	2,53	2,08	1,78	1,51	1,34	1,32
25/03/2003	3,80	2,92	2,54	2,10	1,80	1,53	1,34	1,32
01/04/2003	3,80	2,92	2,54	2,11	1,82	1,55	1,35	1,32
08/04/2003	3,80	2,92	2,54	2,13	1,84	1,57	1,35	1,32
15/04/2003	3,80	2,92	2,55	2,15	1,86	1,57	1,35	1,32
22/04/2003	3,80	2,92	2,55	2,15	1,86	1,57	1,35	1,32
29/04/2003	3,80	2,92	2,55	2,15	1,86	1,57	1,35	1,32
07/05/2003	3,80	2,92	2,55	2,15	1,86	1,57	1,35	1,32
13/05/2003	3,78	2,90	2,53	2,15	1,86	1,57	1,35	1,32
20/05/2003	3,76	2,88	2,51	2,15	1,88	1,59	1,37	1,32
27/05/2003	3,73	2,85	2,48	2,15	1,91	1,62	1,39	1,32
03/06/2003	3,71	2,83	2,46	2,15	1,93	1,64	1,39	1,32
10/06/2003	3,65	2,77	2,40	2,12	1,94	1,65	1,40	1,32
17/06/2003	3,61	2,73	2,36	2,10	1,94	1,65	1,40	1,32
24/06/2003	3,57	2,69	2,32	2,06	1,94	1,65	1,40	1,32
01/07/2003	3,53	2,65	2,29	2,03	1,94	1,65	1,40	1,32
08/07/2003	3,49	2,61	2,25	2,00	1,91	1,65	1,40	1,32
15/07/2003	3,45	2,58	2,22	2,00	1,91	1,65	1,45	1,37
22/07/2003	3,41	2,54	2,18	1,96	1,89	1,65	1,45	1,37
29/07/2003	3,36	2,52	2,15	1,93	1,89	1,65	1,45	1,37
05/08/2003	3,31	2,47	2,11	1,89	1,87	1,65	1,45	1,37
12/08/2003	3,29	2,44	2,08	1,86	1,84	1,65	1,45	1,37
19/08/2003	3,29	2,44	2,08	1,86	1,84	1,65	1,45	1,37
26/08/2003	3,29	2,39	2,03	1,81	1,82	1,65	1,45	1,37
02/09/2003	3,29	2,36	2,00	1,78	1,79	1,65	1,45	1,37
09/09/2003	3,25	2,32	1,96	1,76	1,77	1,65	1,45	1,37
16/09/2003	3,25	2,32	1,94	1,74	1,75	1,65	1,45	1,37
23/09/2003	3,25	2,32	1,94	1,74	1,75	1,65	1,45	1,37
30/09/2003	3,25	2,32	1,93	1,72	1,72	1,65	1,45	1,37
07/10/2003	3,25	2,32	1,93	1,72	1,72	1,65	1,45	1,37
14/10/2003	3,25	2,32	1,93	1,72	1,72	1,65	1,45	1,37
21/10/2003	3,25	2,32	1,93	1,72	1,72	1,65	1,45	1,37
28/10/2003	3,25	2,32	1,93	1,71	1,70	1,63	1,45	1,37
04/11/2003	3,25	2,32	1,93	1,71	1,70	1,63	1,45	1,37
11/11/2003	3,25	2,32	1,93	1,71	1,70	1,63	1,45	1,37
18/11/2003	3,25	2,32	1,93	1,71	1,70	1,63	1,45	1,37
25/11/2003	3,28	2,34	1,93	1,71	1,70	1,63	1,45	1,37
02/12/2003	3,30	2,36	1,94	1,71	1,68	1,61	1,43	1,35
09/12/2003	3,35	2,40	1,95	1,70	1,66	1,59	1,41	1,33
16/12/2003	3,40	2,44	1,98	1,70	1,63	1,56	1,38	1,30
23/12/2003	3,44	2,46	2,01	1,70	1,63	1,56	1,38	1,30
30/12/2003	3,47	2,49	2,04	1,70	1,63	1,56	1,38	1,30
MEDIA	3,50	2,61	2,22	1,91	1,78	1,59	1,40	1,34

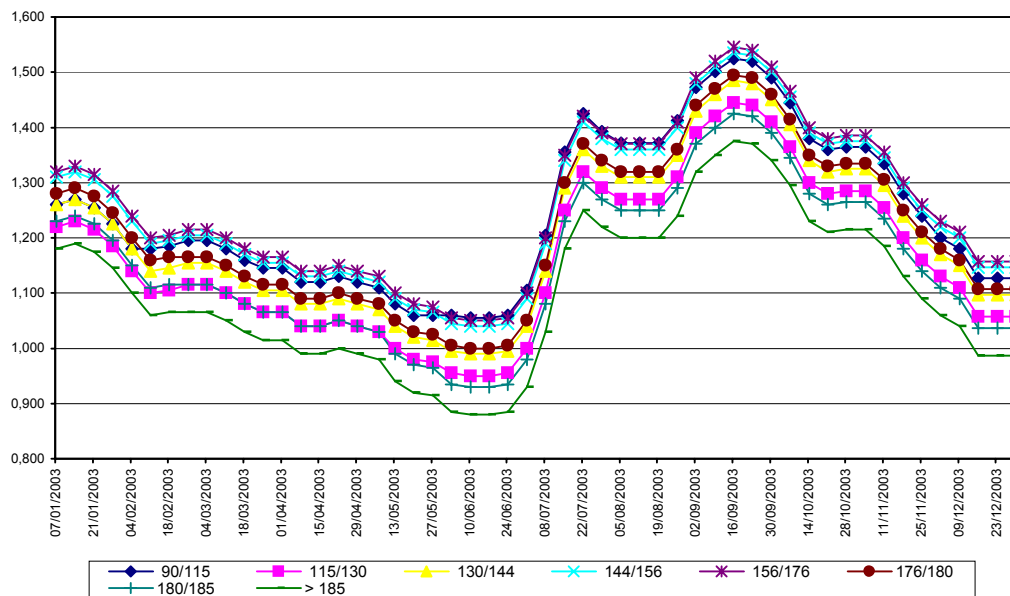
REGGIO EMILIA 2003

SETTIMANE	SUINI DA MACELLO (€/Kg)							
	90/115	115/130	130/144	144/156	156/176	176/180	180/185	> 185
07/01/2003	1,260	1,220	1,260	1,310	1,320	1,280	1,230	1,180
14/01/2003	1,270	1,230	1,270	1,320	1,330	1,290	1,240	1,190
21/01/2003	1,255	1,215	1,255	1,305	1,315	1,275	1,225	1,175
28/01/2003	1,225	1,185	1,225	1,275	1,285	1,245	1,195	1,145
04/02/2003	1,180	1,140	1,180	1,230	1,240	1,200	1,150	1,100
11/02/2003	1,180	1,100	1,140	1,190	1,200	1,160	1,110	1,060
18/02/2003	1,185	1,105	1,145	1,195	1,205	1,165	1,115	1,065
25/02/2003	1,195	1,115	1,155	1,205	1,215	1,165	1,115	1,065
04/03/2003	1,195	1,115	1,155	1,205	1,215	1,165	1,115	1,065
11/03/2003	1,180	1,100	1,140	1,190	1,200	1,150	1,100	1,050
18/03/2003	1,160	1,080	1,120	1,170	1,180	1,130	1,080	1,030
25/03/2003	1,145	1,065	1,105	1,155	1,165	1,115	1,065	1,015
01/04/2003	1,145	1,065	1,105	1,155	1,165	1,115	1,065	1,015
08/04/2003	1,120	1,040	1,080	1,130	1,140	1,090	1,040	0,990
15/04/2003	1,120	1,040	1,080	1,130	1,140	1,090	1,040	0,990
22/04/2003	1,130	1,050	1,090	1,140	1,150	1,100	1,050	1,000
29/04/2003	1,120	1,040	1,080	1,130	1,140	1,090	1,040	0,990
07/05/2003	1,110	1,030	1,070	1,120	1,130	1,080	1,030	0,980
13/05/2003	1,080	1,000	1,040	1,090	1,100	1,050	0,990	0,940
20/05/2003	1,060	0,980	1,020	1,070	1,080	1,030	0,970	0,920
27/05/2003	1,060	0,975	1,015	1,065	1,075	1,025	0,965	0,915
03/06/2003	1,060	0,955	0,995	1,045	1,055	1,005	0,935	0,885
10/06/2003	1,055	0,950	0,990	1,040	1,050	1,000	0,930	0,880
17/06/2003	1,055	0,950	0,990	1,040	1,050	1,000	0,930	0,880
24/06/2003	1,060	0,955	0,995	1,045	1,055	1,005	0,935	0,885
01/07/2003	1,105	1,000	1,040	1,090	1,100	1,050	0,980	0,930
08/07/2003	1,205	1,100	1,140	1,190	1,200	1,150	1,080	1,030
15/07/2003	1,355	1,250	1,290	1,340	1,350	1,300	1,230	1,180
22/07/2003	1,425	1,320	1,360	1,410	1,420	1,370	1,300	1,250
29/07/2003	1,392	1,290	1,330	1,380	1,390	1,340	1,270	1,220
05/08/2003	1,372	1,270	1,310	1,360	1,370	1,320	1,250	1,200
12/08/2003	1,372	1,270	1,310	1,360	1,370	1,320	1,250	1,200
19/08/2003	1,372	1,270	1,310	1,360	1,370	1,320	1,250	1,200
26/08/2003	1,412	1,310	1,350	1,400	1,410	1,360	1,290	1,240
02/09/2003	1,472	1,390	1,430	1,480	1,490	1,440	1,370	1,320
09/09/2003	1,502	1,420	1,460	1,510	1,520	1,470	1,400	1,350
16/09/2003	1,525	1,445	1,485	1,535	1,545	1,495	1,425	1,375
23/09/2003	1,520	1,440	1,480	1,530	1,540	1,490	1,420	1,370
30/09/2003	1,490	1,410	1,450	1,500	1,510	1,460	1,390	1,340
07/10/2003	1,445	1,365	1,405	1,455	1,465	1,415	1,345	1,295
14/10/2003	1,380	1,300	1,340	1,390	1,400	1,350	1,280	1,230
21/10/2003	1,360	1,280	1,320	1,370	1,380	1,330	1,260	1,210
28/10/2003	1,365	1,285	1,325	1,375	1,385	1,335	1,265	1,215
04/11/2003	1,365	1,285	1,325	1,375	1,385	1,335	1,265	1,215
11/11/2003	1,335	1,255	1,295	1,345	1,355	1,305	1,235	1,185
18/11/2003	1,280	1,200	1,240	1,290	1,300	1,250	1,180	1,130
25/11/2003	1,240	1,160	1,200	1,250	1,260	1,210	1,140	1,090
02/12/2003	1,200	1,130	1,170	1,220	1,230	1,180	1,110	1,060
09/12/2003	1,180	1,110	1,150	1,200	1,210	1,160	1,090	1,040
16/12/2003	1,127	1,057	1,097	1,147	1,157	1,107	1,037	0,987
23/12/2003	1,127	1,057	1,097	1,147	1,157	1,107	1,037	0,987
30/12/2003	1,127	1,057	1,097	1,147	1,157	1,107	1,037	0,987
MEDIA	1,243	1,162	1,202	1,252	1,262	1,213	1,151	1,101

REGGIO EMILIA 2003
SUINI D'ALLEVAMENTO
 (Euro/Kg)



REGGIO EMILIA 2003
SUNI DA MACELLO
 (Euro/Kg)



Ente Regionale per i Servizi
 all'Agricoltura e alle Foreste