



REGGIO EMILIA 2008

CAMERA DI COMMERCIO DI REGGIO EMILIA

Categoria: SUINI VIVI

Prezzi: (Franco Partenza) Per Kg peso vivo - IVA esclusa

di Cosmino Giovanni Basile

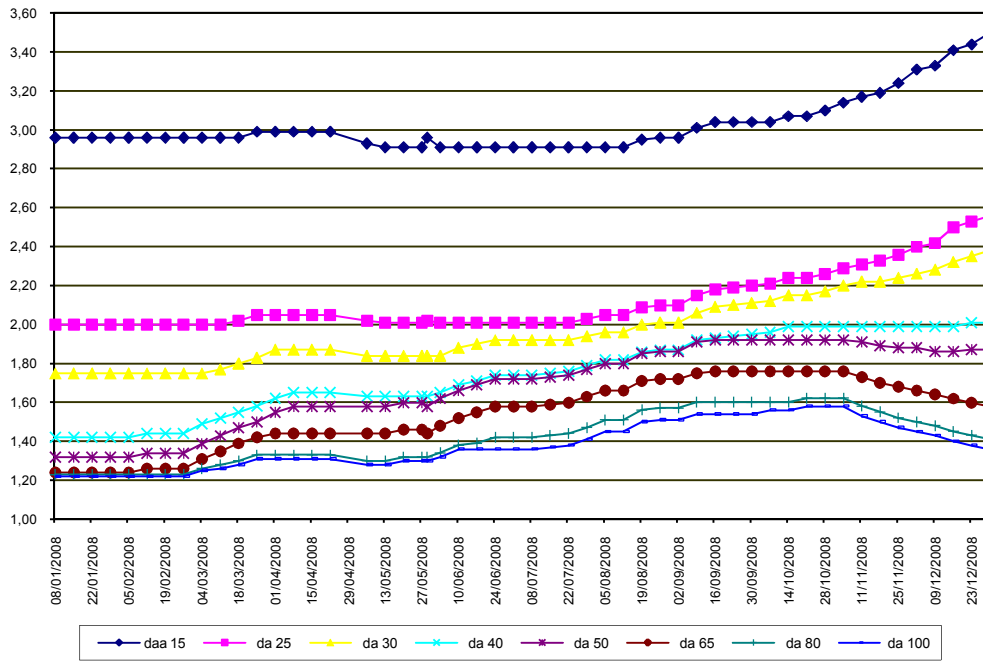
SETTIMANE	SUINI D'ALLEVAMENTO (€/Kg)								
	da 6	da 15	da 25	da 30	da 40	da 50	da 65	da 80	da 100
08/01/2008	5,85	2,96	2,00	1,75	1,42	1,32	1,24	1,23	1,22
15/01/2008	5,85	2,96	2,00	1,75	1,42	1,32	1,24	1,23	1,22
22/01/2008	5,85	2,96	2,00	1,75	1,42	1,32	1,24	1,23	1,22
29/01/2008	5,85	2,96	2,00	1,75	1,42	1,32	1,24	1,23	1,22
05/02/2008	5,85	2,96	2,00	1,75	1,42	1,32	1,24	1,23	1,22
12/02/2008	5,85	2,96	2,00	1,75	1,44	1,34	1,26	1,23	1,22
19/02/2008	5,85	2,96	2,00	1,75	1,44	1,34	1,26	1,23	1,22
26/02/2008	5,85	2,96	2,00	1,75	1,44	1,34	1,26	1,23	1,22
04/03/2008	5,85	2,96	2,00	1,75	1,49	1,39	1,31	1,26	1,25
11/03/2008	5,85	2,96	2,00	1,77	1,52	1,43	1,35	1,28	1,26
18/03/2008	5,85	2,96	2,02	1,80	1,55	1,47	1,39	1,30	1,28
25/03/2008	5,85	2,99	2,05	1,83	1,58	1,50	1,42	1,33	1,31
01/04/2008	5,85	2,99	2,05	1,87	1,62	1,55	1,44	1,33	1,31
08/04/2008	5,85	2,99	2,05	1,87	1,65	1,58	1,44	1,33	1,31
15/04/2008	5,85	2,99	2,05	1,87	1,65	1,58	1,44	1,33	1,31
22/04/2008	5,85	2,99	2,05	1,87	1,65	1,58	1,44	1,33	1,31
29/05/2008	5,83	2,96	2,02	1,84	1,63	1,58	1,44	1,32	1,30
06/05/2008	5,75	2,93	2,02	1,84	1,63	1,58	1,44	1,30	1,28
13/05/2008	5,65	2,91	2,01	1,84	1,63	1,58	1,44	1,30	1,28
20/05/2008	5,65	2,91	2,01	1,84	1,63	1,60	1,46	1,32	1,30
27/05/2008	5,65	2,91	2,01	1,84	1,63	1,60	1,46	1,32	1,30
03/06/2008	5,65	2,91	2,01	1,84	1,65	1,62	1,48	1,34	1,32
10/06/2008	5,65	2,91	2,01	1,88	1,69	1,66	1,52	1,38	1,36
17/06/2008	5,65	2,91	2,01	1,90	1,71	1,69	1,55	1,39	1,36
24/06/2008	5,65	2,91	2,01	1,92	1,74	1,72	1,58	1,42	1,36
01/07/2008	5,65	2,91	2,01	1,92	1,74	1,72	1,58	1,42	1,36
08/07/2008	5,65	2,91	2,01	1,92	1,74	1,72	1,58	1,42	1,36
15/07/2008	5,65	2,91	2,01	1,92	1,75	1,73	1,59	1,43	1,37
22/07/2008	5,65	2,91	2,01	1,92	1,76	1,74	1,60	1,44	1,38
29/07/2008	5,65	2,91	2,03	1,94	1,79	1,77	1,63	1,47	1,41
05/08/2008	5,65	2,91	2,05	1,96	1,82	1,80	1,66	1,51	1,45
12/08/2008	5,65	2,91	2,05	1,96	1,82	1,80	1,66	1,51	1,45
19/08/2008	5,65	2,95	2,09	2,00	1,86	1,85	1,71	1,56	1,50
26/08/2008	5,65	2,96	2,10	2,01	1,87	1,86	1,72	1,57	1,51
02/09/2008	5,65	2,96	2,10	2,01	1,87	1,86	1,72	1,57	1,51
09/09/2008	5,65	3,01	2,15	2,06	1,92	1,91	1,75	1,60	1,54
16/09/2008	5,65	3,04	2,18	2,09	1,93	1,92	1,76	1,60	1,54
23/09/2008	5,65	3,04	2,19	2,10	1,94	1,92	1,76	1,60	1,54
30/09/2008	5,65	3,04	2,20	2,11	1,95	1,92	1,76	1,60	1,54
07/10/2008	5,65	3,04	2,21	2,12	1,96	1,92	1,76	1,60	1,56
14/10/2008	5,65	3,07	2,24	2,15	1,99	1,92	1,76	1,60	1,56
21/10/2008	5,65	3,07	2,24	2,15	1,99	1,92	1,76	1,62	1,58
28/10/2008	5,65	3,10	2,26	2,17	1,99	1,92	1,76	1,62	1,58
04/11/2008	5,65	3,14	2,29	2,20	1,99	1,92	1,76	1,62	1,58
11/11/2008	5,65	3,17	2,31	2,22	1,99	1,91	1,73	1,58	1,53
18/11/2008	5,65	3,19	2,33	2,22	1,99	1,89	1,70	1,55	1,50
25/11/2008	5,66	3,24	2,36	2,24	1,99	1,88	1,68	1,52	1,47
02/12/2008	5,76	3,31	2,40	2,26	1,99	1,88	1,66	1,50	1,45
09/12/2008	5,78	3,33	2,42	2,28	1,99	1,86	1,64	1,48	1,43
16/12/2008	5,88	3,41	2,50	2,32	1,99	1,86	1,62	1,45	1,40
23/12/2008	5,98	3,44	2,53	2,35	2,01	1,87	1,60	1,43	1,38
30/12/2008	6,05	3,50	2,56	2,38	2,01	1,87	1,58	1,41	1,36
MEDIA	5,74	3,02	2,12	1,97	1,74	1,68	1,54	1,42	1,38

REGGIO EMILIA 2008

SETTIMANE	SUINI DA MACELLO (€/Kg)							
	90/115	115/130	130/144	144/156	156/176	176/180	180/185	> 185
08/01/2008	1,160	1,110	1,130	1,150	1,180	1,170	1,110	1,080
15/01/2008	1,165	1,115	1,135	1,155	1,185	1,175	1,115	1,085
22/01/2008	1,230	1,180	1,200	1,220	1,250	1,240	1,180	1,150
29/01/2008	1,230	1,230	1,250	1,270	1,300	1,290	1,230	1,200
05/02/2008	1,190	1,190	1,210	1,230	1,260	1,250	1,190	1,160
12/02/2008	1,190	1,130	1,150	1,170	1,200	1,190	1,130	1,100
19/02/2008	1,160	1,100	1,120	1,140	1,170	1,160	1,100	1,070
26/02/2008	1,170	1,110	1,130	1,150	1,180	1,170	1,110	1,080
04/03/2008	1,240	1,180	1,200	1,220	1,250	1,240	1,180	1,150
11/03/2008	1,250	1,190	1,210	1,230	1,260	1,250	1,190	1,160
18/03/2008	1,250	1,190	1,210	1,230	1,260	1,250	1,190	1,160
25/03/2008	1,240	1,180	1,200	1,220	1,250	1,240	1,180	1,150
01/04/2008	1,190	1,130	1,150	1,170	1,200	1,190	1,130	1,100
08/04/2008	1,150	1,090	1,110	1,130	1,160	1,150	1,090	1,060
15/04/2008	1,080	1,020	1,040	1,060	1,090	1,080	1,020	0,990
22/04/2008	1,030	0,970	0,990	1,010	1,040	1,030	0,970	0,940
29/05/2008	1,040	0,980	1,000	1,020	1,050	1,040	0,980	0,950
06/05/2008	1,090	1,015	1,035	1,055	1,085	1,075	1,015	0,985
13/05/2008	1,155	1,080	1,100	1,120	1,150	1,140	1,080	1,050
20/05/2008	1,225	1,150	1,170	1,190	1,220	1,210	1,150	1,120
27/05/2008	1,225	1,150	1,170	1,190	1,220	1,210	1,150	1,120
03/06/2008	1,230	1,155	1,175	1,195	1,225	1,215	1,155	1,125
10/06/2008	1,330	1,215	1,235	1,255	1,285	1,275	1,215	1,185
17/06/2008	1,355	1,240	1,260	1,280	1,310	1,300	1,240	1,210
24/06/2008	1,355	1,240	1,260	1,280	1,310	1,300	1,240	1,210
01/07/2008	1,355	1,240	1,260	1,280	1,310	1,300	1,240	1,210
08/07/2008	1,320	1,205	1,225	1,245	1,275	1,265	1,205	1,175
15/07/2008	1,325	1,210	1,230	1,250	1,280	1,270	1,210	1,180
22/07/2008	1,390	1,275	1,295	1,315	1,345	1,335	1,275	1,245
29/07/2008	1,485	1,370	1,390	1,410	1,440	1,430	1,370	1,340
05/08/2008	1,545	1,430	1,450	1,470	1,500	1,490	1,430	1,400
12/08/2008	1,545	1,430	1,450	1,470	1,500	1,490	1,430	1,400
19/08/2008	1,545	1,420	1,440	1,460	1,490	1,480	1,420	1,390
26/08/2008	1,525	1,400	1,420	1,440	1,470	1,460	1,400	1,370
02/09/2008	1,550	1,425	1,445	1,465	1,495	1,485	1,425	1,395
09/09/2008	1,620	1,515	1,535	1,555	1,585	1,575	1,515	1,485
16/09/2008	1,630	1,530	1,550	1,570	1,600	1,590	1,530	1,500
23/09/2008	1,610	1,510	1,530	1,550	1,580	1,570	1,510	1,480
30/09/2008	1,590	1,490	1,510	1,530	1,560	1,550	1,490	1,460
07/10/2008	1,610	1,510	1,530	1,550	1,580	1,570	1,510	1,480
14/10/2008	1,630	1,550	1,570	1,590	1,620	1,610	1,560	1,530
21/10/2008	1,630	1,550	1,570	1,590	1,620	1,610	1,560	1,530
28/10/2008	1,560	1,480	1,500	1,520	1,550	1,540	1,490	1,460
04/11/2008	1,460	1,380	1,400	1,420	1,450	1,440	1,390	1,360
11/11/2008	1,375	1,295	1,315	1,335	1,365	1,355	1,305	1,275
18/11/2008	1,380	1,300	1,320	1,340	1,370	1,360	1,310	1,280
25/11/2008	1,390	1,310	1,330	1,350	1,380	1,370	1,320	1,290
02/12/2008	1,345	1,265	1,285	1,305	1,335	1,325	1,275	1,245
09/12/2008	1,280	1,200	1,220	1,240	1,270	1,260	1,210	1,180
16/12/2008	1,260	1,180	1,200	1,220	1,250	1,240	1,190	1,160
23/12/2008	1,210	1,150	1,170	1,190	1,220	1,210	1,160	1,130
30/12/2008	1,215	1,155	1,175	1,195	1,225	1,215	1,165	1,135
MEDIA	1,333	1,252	1,272	1,292	1,322	1,312	1,255	1,225

nq = non quotati

REGGIO EMILIA 2008
SUINI D'ALLEVAMENTO
 (Euro/Kg)



REGGIO EMILIA 2008
SUINI DA MACELLO
 (Euro/Kg)

