



**BRESCIA 1997**

**CAMERA DI COMMERCIO DI BRESCIA**

**Categoria: SUINI VIVI**

**Prezzi: (Franco Partenza) Per Kg peso vivo - IVA esclusa**

di Cosmino Giovanni Basile

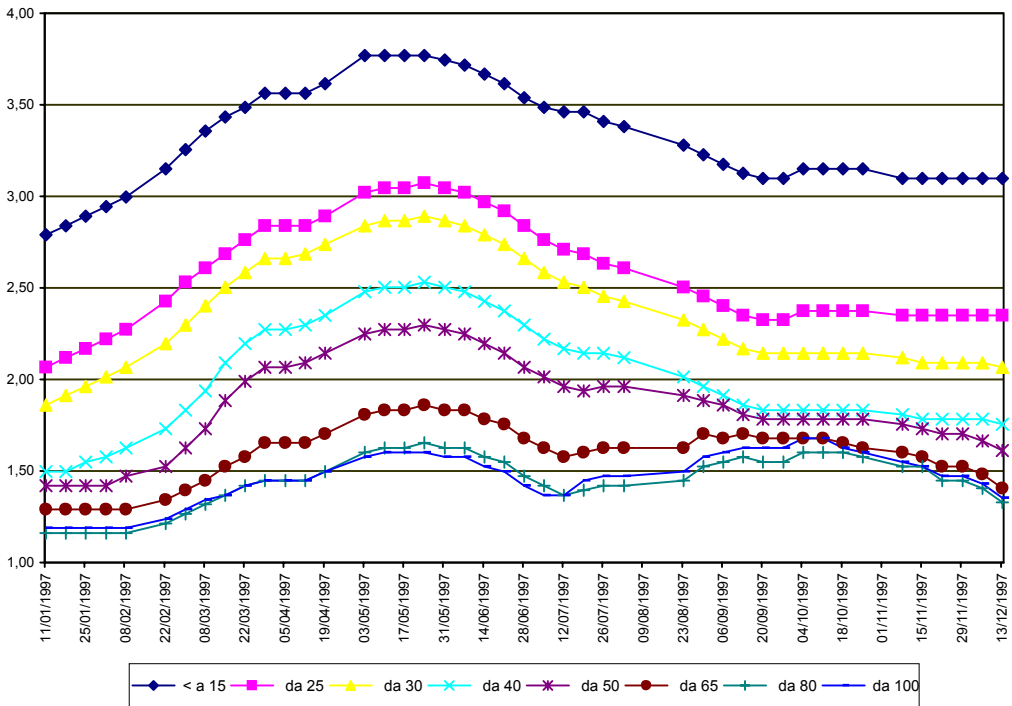
SETTIMANE	SUINI D'ALLEVAMENTO (€/Kg)							
	< a 15	da 25	da 30	da 40	da 50	da 65	da 80	da 100
11/01/1997	2,79	2,07	1,86	1,50	1,42	1,29	1,16	1,19
18/01/1997	2,84	2,12	1,91	1,50	1,42	1,29	1,16	1,19
25/01/1997	2,89	2,17	1,96	1,55	1,42	1,29	1,16	1,19
01/02/1997	2,94	2,22	2,01	1,58	1,42	1,29	1,16	1,19
08/02/1997	3,00	2,27	2,07	1,63	1,47	1,29	1,16	1,19
22/02/1997	3,15	2,43	2,19	1,73	1,52	1,34	1,21	1,24
01/03/1997	3,25	2,53	2,30	1,83	1,63	1,39	1,27	1,29
08/03/1997	3,36	2,61	2,40	1,94	1,73	1,45	1,32	1,34
15/03/1997	3,43	2,69	2,50	2,09	1,89	1,52	1,37	1,37
22/03/1997	3,49	2,76	2,58	2,19	1,99	1,58	1,42	1,42
29/03/1997	3,56	2,84	2,66	2,27	2,07	1,65	1,45	1,45
05/04/1997	3,56	2,84	2,66	2,27	2,07	1,65	1,45	1,45
12/04/1997	3,56	2,84	2,69	2,30	2,09	1,65	1,45	1,45
19/04/1997	3,62	2,89	2,74	2,35	2,14	1,70	1,50	1,50
03/05/1997	3,77	3,02	2,84	2,48	2,25	1,81	1,60	1,58
10/05/1997	3,77	3,05	2,87	2,50	2,27	1,83	1,63	1,60
17/05/1997	3,77	3,05	2,87	2,50	2,27	1,83	1,63	1,60
24/05/1997	3,77	3,07	2,89	2,53	2,30	1,86	1,65	1,60
31/05/1997	3,74	3,05	2,87	2,50	2,27	1,83	1,63	1,58
07/06/1997	3,72	3,02	2,84	2,48	2,25	1,83	1,63	1,58
14/06/1997	3,67	2,97	2,79	2,43	2,19	1,78	1,58	1,52
21/06/1997	3,62	2,92	2,74	2,38	2,14	1,76	1,55	1,50
28/06/1997	3,54	2,84	2,66	2,30	2,07	1,68	1,47	1,42
05/07/1997	3,49	2,76	2,58	2,22	2,01	1,63	1,42	1,37
12/07/1997	3,46	2,71	2,53	2,17	1,96	1,58	1,37	1,37
19/07/1997	3,46	2,69	2,50	2,14	1,94	1,60	1,39	1,45
26/07/1997	3,41	2,63	2,45	2,14	1,96	1,63	1,42	1,47
02/08/1997	3,38	2,61	2,43	2,12	1,96	1,63	1,42	1,47
23/08/1997	3,28	2,50	2,32	2,01	1,91	1,63	1,45	1,50
30/08/1997	3,23	2,45	2,27	1,96	1,89	1,70	1,52	1,58
06/09/1997	3,18	2,40	2,22	1,91	1,86	1,68	1,55	1,60
13/09/1997	3,12	2,35	2,17	1,86	1,81	1,70	1,58	1,63
20/09/1997	3,10	2,32	2,14	1,83	1,78	1,68	1,55	1,63
27/09/1997	3,10	2,32	2,14	1,83	1,78	1,68	1,55	1,63
04/10/1997	3,15	2,38	2,14	1,83	1,78	1,68	1,60	1,68
11/10/1997	3,15	2,38	2,14	1,83	1,78	1,68	1,60	1,68
18/10/1997	3,15	2,38	2,14	1,83	1,78	1,65	1,60	1,63
25/10/1997	3,15	2,38	2,14	1,83	1,78	1,63	1,58	1,60
08/11/1997	3,10	2,35	2,12	1,81	1,76	1,60	1,52	1,55
15/11/1997	3,10	2,35	2,09	1,78	1,73	1,58	1,52	1,52
22/11/1997	3,10	2,35	2,09	1,78	1,70	1,52	1,45	1,47
29/11/1997	3,10	2,35	2,09	1,78	1,70	1,52	1,45	1,47
06/12/1997	3,10	2,35	2,09	1,78	1,66	1,48	1,40	1,43
13/12/1997	3,10	2,35	2,07	1,76	1,61	1,40	1,33	1,35
<b>MEDIA</b>	<b>3,32</b>	<b>2,58</b>	<b>2,38</b>	<b>2,02</b>	<b>1,87</b>	<b>1,60</b>	<b>1,45</b>	<b>1,47</b>

## BRESCIA 1997

SETTIMANE	SUINI DA MACELLO (€/Kg)					
	90/115	115/130	130/145	145/160	160/180	> 180
11/01/1997	nq	1,172	1,224	1,265	1,296	1,219
18/01/1997	nq	1,188	1,239	1,281	1,312	1,234
25/01/1997	nq	1,152	1,203	1,245	1,276	1,198
01/02/1997	nq	1,126	1,178	1,219	1,250	1,172
08/02/1997	nq	1,126	1,178	1,219	1,250	1,172
22/02/1997	nq	1,126	1,178	1,219	1,250	1,172
01/03/1997	nq	1,126	1,152	1,193	1,224	1,147
08/03/1997	nq	1,126	1,131	1,172	1,203	1,126
15/03/1997	nq	1,152	1,157	1,198	1,239	1,162
22/03/1997	nq	1,203	1,209	1,250	1,301	1,214
29/03/1997	nq	1,203	1,209	1,250	1,301	1,214
05/04/1997	nq	1,178	1,183	1,224	1,276	1,188
12/04/1997	nq	1,214	1,219	1,260	1,312	1,224
19/04/1997	nq	1,317	1,322	1,363	1,415	1,327
03/05/1997	nq	1,394	1,425	1,441	1,493	1,379
10/05/1997	nq	1,394	1,400	1,415	1,467	1,353
17/05/1997	nq	1,384	1,389	1,405	1,456	1,343
24/05/1997	nq	1,348	1,353	1,369	1,420	1,307
31/05/1997	nq	1,296	1,301	1,317	1,369	1,255
07/06/1997	nq	1,296	1,301	1,317	1,369	1,255
14/06/1997	nq	1,296	1,301	1,317	1,369	1,255
21/06/1997	nq	1,270	1,276	1,291	1,343	1,229
28/06/1997	nq	1,219	1,224	1,239	1,291	1,178
05/07/1997	nq	1,193	1,198	1,214	1,265	1,152
12/07/1997	nq	1,245	1,250	1,265	1,317	1,203
19/07/1997	nq	1,322	1,327	1,343	1,394	1,281
26/07/1997	nq	1,281	1,286	1,301	1,353	1,239
02/08/1997	nq	1,250	1,255	1,270	1,322	1,209
23/08/1997	nq	1,250	1,291	1,322	1,348	1,239
30/08/1997	nq	1,327	1,369	1,400	1,425	1,317
06/09/1997	nq	1,343	1,384	1,415	1,441	1,332
13/09/1997	nq	1,343	1,384	1,415	1,441	1,332
20/09/1997	nq	1,332	1,374	1,405	1,431	1,322
27/09/1997	nq	1,410	1,451	1,482	1,508	1,400
04/10/1997	nq	1,436	1,477	1,508	1,534	1,425
11/10/1997	nq	1,405	1,446	1,477	1,503	1,394
18/10/1997	nq	1,353	1,394	1,425	1,451	1,343
25/10/1997	nq	1,327	1,369	1,400	1,425	1,317
08/11/1997	nq	1,327	1,369	1,400	1,425	1,317
15/11/1997	nq	1,301	1,343	1,374	1,400	1,291
22/11/1997	nq	1,327	1,369	1,400	1,425	1,317
29/11/1997	nq	1,296	1,338	1,369	1,394	1,286
06/12/1997	nq	1,255	1,296	1,327	1,353	1,245
13/12/1997	nq	1,198	1,219	1,250	1,276	1,167
<b>MEDIA</b>	<b>nq</b>	<b>1,269</b>	<b>1,294</b>	<b>1,323</b>	<b>1,362</b>	<b>1,260</b>

nq = non quotati

**BRESCIA 1997**  
**SUINI D'ALLEVAMENTO**  
 (Euro/Kg)



**BRESCIA 1997**  
**SUINI DA MACELLO**  
 (Euro/Kg)

