

REGGIO EMILIA 2002

CAMERA DI COMMERCIO DI REGGIO EMILIA

Categoria: SUINI VIVI

Prezzi: (Franco Partenza) Per Kg peso vivo - IVA esclusa

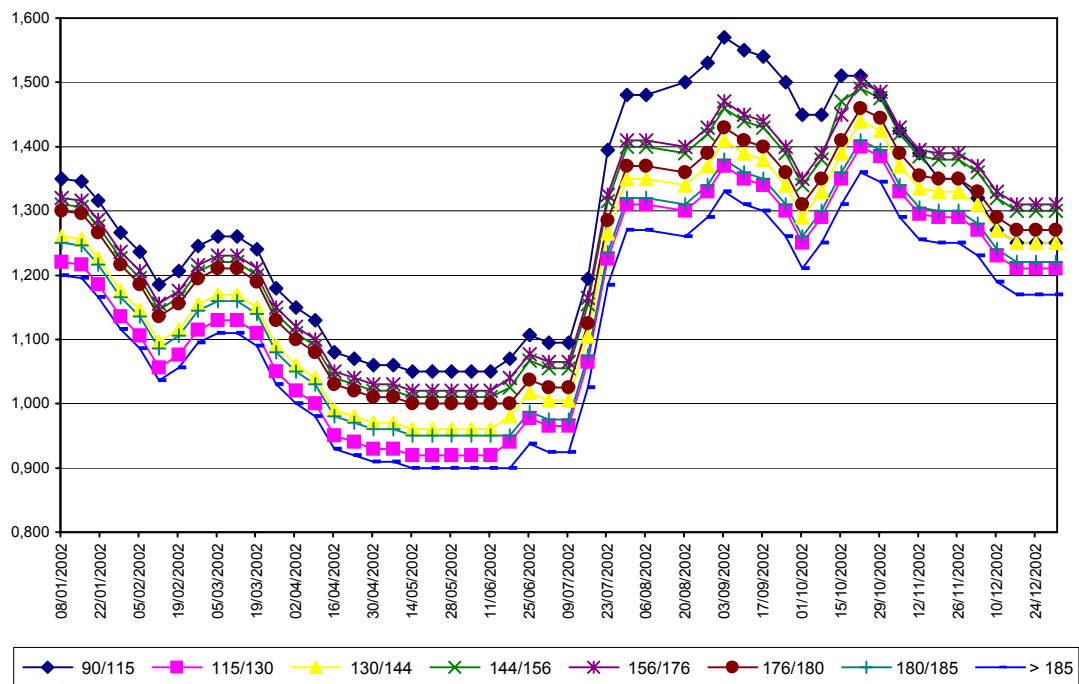
di Cosmino Giovanni Basile

SETTIMANE	SUINI D'ALLEVAMENTO €/Kg)							
	< a 15	da 25	da 30	da 40	da 50	da 65	da 80	da 100
08/01/2002	3,35	2,79	2,50	2,17	1,96	1,67	1,45	1,45
15/01/2002	3,45	2,89	2,58	2,20	1,96	1,67	1,45	1,45
21/01/2002	3,55	2,99	2,68	2,25	1,99	1,67	1,45	1,45
29/01/2002	3,60	3,04	2,73	2,30	1,99	1,67	1,45	1,45
05/02/2002	3,65	3,09	2,78	2,33	1,99	1,67	1,45	1,45
12/02/2002	3,70	3,12	2,80	2,33	1,99	1,67	1,45	1,45
19/02/2002	3,70	3,12	2,80	2,33	1,99	1,67	1,45	1,45
26/02/2002	3,74	3,16	2,84	2,37	2,04	1,71	1,47	1,45
05/03/2002	3,74	3,16	2,86	2,39	2,06	1,73	1,47	1,45
12/03/2002	3,74	3,16	2,86	2,41	2,08	1,73	1,47	1,45
19/03/2002	3,74	3,16	2,86	2,41	2,08	1,73	1,47	1,45
26/03/2002	3,69	3,11	2,81	2,41	2,08	1,73	1,47	1,45
02/04/2002	3,67	3,09	2,79	2,39	2,08	1,73	1,47	1,45
09/04/2002	3,65	3,07	2,77	2,37	2,06	1,71	1,45	1,43
16/04/2002	3,58	3,00	2,70	2,30	1,99	1,64	1,38	1,36
23/04/2002	3,56	2,98	2,68	2,28	1,99	1,64	1,38	1,36
30/04/2002	3,53	2,95	2,65	2,25	1,96	1,61	1,38	1,36
07/05/2002	3,53	2,91	2,61	2,21	1,96	1,61	1,36	1,34
14/05/2002	3,51	2,89	2,59	2,19	1,94	1,59	1,34	1,32
21/05/2002	3,51	2,89	2,59	2,19	1,94	1,59	1,34	1,32
28/05/2002	3,51	2,89	2,59	2,19	1,94	1,59	1,34	1,32
04/06/2002	3,51	2,89	2,59	2,19	1,94	1,59	1,34	1,32
11/06/2002	3,49	2,87	2,57	2,17	1,92	1,59	1,34	1,32
18/06/2002	3,46	2,84	2,54	2,14	1,92	1,59	1,34	1,32
25/06/2002	3,46	2,80	2,50	2,11	1,91	1,59	1,34	1,32
02/07/2002	3,42	2,76	2,46	2,07	1,91	1,59	1,34	1,32
09/07/2002	3,42	2,73	2,43	2,04	1,87	1,59	1,34	1,32
16/07/2002	3,42	2,73	2,43	2,04	1,87	1,59	1,34	1,32
23/07/2002	3,42	2,73	2,43	2,04	1,87	1,59	1,34	1,32
30/07/2002	3,42	2,73	2,43	2,04	1,87	1,64	1,44	1,42
06/08/2002	3,39	2,70	2,41	2,04	1,87	1,64	1,44	1,42
20/08/2002	3,37	2,68	2,39	2,02	1,87	1,64	1,44	1,42
28/08/2002	3,33	2,64	2,35	1,98	1,87	1,64	1,44	1,42
03/09/2002	3,30	2,61	2,32	1,98	1,87	1,64	1,47	1,45
10/09/2002	3,28	2,59	2,30	1,96	1,87	1,64	1,47	1,45
17/09/2002	3,28	2,57	2,28	1,94	1,87	1,64	1,47	1,45
25/09/2002	3,26	2,52	2,23	1,90	1,85	1,64	1,47	1,45
01/10/2002	3,23	2,47	2,18	1,86	1,83	1,64	1,47	1,45
08/10/2002	3,23	2,44	2,14	1,82	1,79	1,64	1,47	1,45
15/10/2002	3,19	2,40	2,11	1,79	1,76	1,61	1,47	1,45
22/10/2002	3,19	2,38	2,08	1,76	1,73	1,58	1,47	1,45
29/10/2002	3,19	2,38	2,06	1,74	1,71	1,58	1,47	1,45
05/11/2002	3,19	2,38	2,06	1,74	1,71	1,58	1,47	1,45
12/11/2002	3,19	2,38	2,06	1,72	1,67	1,54	1,43	1,41
19/11/2002	3,19	2,38	2,06	1,71	1,65	1,52	1,40	1,38
26/11/2002	3,19	2,38	2,06	1,71	1,65	1,52	1,40	1,38
03/12/2002	3,21	2,40	2,08	1,71	1,65	1,52	1,40	1,38
10/12/2002	3,25	2,44	2,12	1,73	1,65	1,52	1,36	1,34
17/12/2002	3,32	2,48	2,15	1,75	1,65	1,50	1,34	1,32
24/12/2002	3,36	2,52	2,17	1,77	1,65	1,50	1,34	1,32
31/12/2002	3,39	2,55	2,19	1,79	1,65	1,50	1,34	1,32
MEDIA	3,44	2,76	2,46	2,07	1,88	1,62	1,41	1,40

REGGIO EMILIA 2002

SETTIMANE	SUINI DA MACELLO (€/Kg)							
	90/115	115/130	130/144	144/156	156/176	176/180	180/185	> 185
08/01/2002	1,350	1,220	1,260	1,310	1,320	1,300	1,250	1,200
15/01/2002	1,346	1,216	1,256	1,306	1,316	1,296	1,246	1,196
21/01/2002	1,316	1,186	1,226	1,276	1,286	1,266	1,216	1,166
29/01/2002	1,266	1,136	1,176	1,226	1,236	1,216	1,166	1,116
05/02/2002	1,236	1,106	1,146	1,196	1,206	1,186	1,136	1,086
12/02/2002	1,186	1,056	1,096	1,146	1,156	1,136	1,086	1,036
19/02/2002	1,206	1,076	1,116	1,166	1,176	1,156	1,106	1,056
26/02/2002	1,245	1,115	1,155	1,205	1,215	1,195	1,145	1,095
05/03/2002	1,260	1,130	1,170	1,220	1,230	1,210	1,160	1,110
12/03/2002	1,260	1,130	1,170	1,220	1,230	1,210	1,160	1,110
19/03/2002	1,240	1,110	1,150	1,200	1,210	1,190	1,140	1,090
26/03/2002	1,180	1,050	1,090	1,140	1,150	1,130	1,080	1,030
02/04/2002	1,150	1,020	1,060	1,110	1,120	1,100	1,050	1,000
09/04/2002	1,130	1,000	1,040	1,090	1,100	1,080	1,030	0,980
16/04/2002	1,080	0,950	0,990	1,040	1,050	1,030	0,980	0,930
23/04/2002	1,070	0,940	0,980	1,030	1,040	1,020	0,970	0,920
30/04/2002	1,060	0,930	0,970	1,020	1,030	1,010	0,960	0,910
07/05/2002	1,060	0,930	0,970	1,020	1,030	1,010	0,960	0,910
14/05/2002	1,050	0,920	0,960	1,010	1,020	1,000	0,950	0,900
21/05/2002	1,050	0,920	0,960	1,010	1,020	1,000	0,950	0,900
28/05/2002	1,050	0,920	0,960	1,010	1,020	1,000	0,950	0,900
04/06/2002	1,050	0,920	0,960	1,010	1,020	1,000	0,950	0,900
11/06/2002	1,050	0,920	0,960	1,010	1,020	1,000	0,950	0,900
18/06/2002	1,070	0,940	0,980	1,025	1,040	1,000	0,950	0,900
25/06/2002	1,107	0,977	1,017	1,067	1,077	1,037	0,987	0,937
02/07/2002	1,095	0,965	1,005	1,055	1,065	1,025	0,975	0,925
09/07/2002	1,095	0,965	1,005	1,055	1,065	1,025	0,975	0,925
16/07/2002	1,195	1,065	1,105	1,155	1,165	1,125	1,075	1,025
23/07/2002	1,395	1,225	1,265	1,315	1,325	1,285	1,235	1,185
30/07/2002	1,480	1,310	1,350	1,400	1,410	1,370	1,320	1,270
06/08/2002	1,480	1,310	1,350	1,400	1,410	1,370	1,320	1,270
20/08/2002	1,500	1,300	1,340	1,390	1,400	1,360	1,310	1,260
28/08/2002	1,530	1,330	1,370	1,420	1,430	1,390	1,340	1,290
03/09/2002	1,570	1,370	1,410	1,460	1,470	1,430	1,380	1,330
10/09/2002	1,550	1,350	1,390	1,440	1,450	1,410	1,360	1,310
17/09/2002	1,540	1,340	1,380	1,430	1,440	1,400	1,350	1,300
25/09/2002	1,500	1,300	1,340	1,390	1,400	1,360	1,310	1,260
01/10/2002	1,450	1,250	1,290	1,340	1,350	1,310	1,260	1,210
08/10/2002	1,450	1,290	1,330	1,380	1,390	1,350	1,300	1,250
15/10/2002	1,510	1,350	1,390	1,470	1,450	1,410	1,360	1,310
22/10/2002	1,510	1,400	1,440	1,490	1,500	1,460	1,410	1,360
29/10/2002	1,480	1,385	1,425	1,475	1,485	1,445	1,395	1,345
05/11/2002	1,425	1,330	1,370	1,420	1,430	1,390	1,340	1,290
12/11/2002	1,390	1,295	1,335	1,385	1,395	1,355	1,305	1,255
19/11/2002	1,350	1,290	1,330	1,380	1,390	1,350	1,300	1,250
26/11/2002	1,350	1,290	1,330	1,380	1,390	1,350	1,300	1,250
03/12/2002	1,320	1,270	1,310	1,360	1,370	1,330	1,280	1,230
10/12/2002	1,270	1,230	1,270	1,320	1,330	1,290	1,240	1,190
17/12/2002	1,250	1,210	1,250	1,300	1,310	1,270	1,220	1,170
24/12/2002	1,250	1,210	1,250	1,300	1,310	1,270	1,220	1,170
31/12/2002	1,250	1,210	1,250	1,300	1,310	1,270	1,220	1,170
MEDIA	1,279	1,150	1,190	1,241	1,250	1,219	1,169	1,119

REGGIO EMILIA 2002 SUINI DA MACELLO (Euro/Kg)



Ente Regionale per i Servizi
all'Agricoltura e alle Foreste