

MILANO 2011

CAMERA DI COMMERCIO DI MILANO

Categoria: SUINI VIVI

Prezzi: (Franco Partenza) Per Kg peso vivo - IVA esclusa

di Cosmino Giovanni Basile

SETTIMANE	SUINI D'ALLEVAMENTO (€/Kg)							
	< a 15	da 25	da 30	da 40	da 50	da 65	da 80	da 100
03/01/2011	3,26	2,14	1,89	1,55	1,41	1,39	1,29	1,29
10/01/2011	3,29	2,18	1,92	1,56	1,41	1,39	1,29	1,29
17/01/2011	3,32	2,21	1,95	1,58	1,41	1,39	1,29	1,29
24/01/2011	3,35	2,24	1,98	1,60	1,41	1,39	1,29	1,29
31/01/2011	3,40	2,29	2,03	1,63	1,42	1,39	1,29	1,29
07/02/2011	3,44	2,34	2,09	1,67	1,43	1,39	1,29	1,29
14/02/2011	3,48	2,40	2,16	1,72	1,45	1,40	1,30	1,30
21/02/2011	nq	nq	nq	nq	nq	nq	nq	nq
28/02/2011	3,56	2,50	2,28	1,84	1,50	1,43	1,31	1,31
07/03/2011	3,58	2,55	2,33	1,89	1,54	1,45	1,31	1,31
14/03/2011	3,59	2,57	2,37	1,93	1,58	1,45	1,31	1,31
21/03/2011	3,60	2,58	2,40	1,97	1,62	1,47	1,32	1,31
28/03/2011	3,60	2,59	2,42	2,00	1,66	1,49	1,33	1,31
04/04/2011	3,60	2,59	2,43	2,03	1,70	1,49	1,33	1,31
11/04/2011	3,60	2,59	2,43	2,05	1,73	1,50	1,33	1,31
18/04/2011	3,60	2,59	2,43	2,07	1,75	1,51	1,33	1,31
22/04/2011	3,60	2,59	2,43	2,09	1,77	1,52	1,33	1,31
02/05/2011	3,60	2,59	2,43	2,11	1,79	1,54	1,35	1,33
09/05/2011	3,60	2,59	2,43	2,13	1,81	1,56	1,37	1,35
16/05/2011	3,60	2,59	2,43	2,14	1,82	1,57	1,37	1,35
23/05/2011	3,60	2,59	2,43	2,14	1,82	1,57	1,37	1,35
30/05/2011	3,57	2,59	2,43	2,14	1,82	1,57	1,37	1,35
06/06/2011	3,54	2,57	2,43	2,14	1,82	1,57	1,37	1,35
13/06/2011	3,50	2,54	2,42	2,14	1,82	1,57	1,37	1,35
20/06/2011	3,46	2,50	2,40	2,14	1,82	1,57	1,37	1,35
27/06/2011	3,42	2,46	2,37	2,13	1,82	1,57	1,37	1,35
04/07/2011	3,38	2,43	2,35	2,12	1,82	1,57	1,38	1,36
11/07/2011	3,34	2,41	2,32	2,10	1,81	1,57	1,40	1,37
18/07/2011	3,32	2,41	2,29	2,07	1,79	1,57	1,40	1,37
25/07/2011	3,27	2,38	2,26	2,03	1,77	1,57	1,40	1,37
01/08/2011	nq	nq	nq	nq	nq	nq	nq	nq
08/08/2011	3,21	2,32	2,19	1,95	1,72	1,58	1,44	1,41
22/08/2011	3,21	2,30	2,15	1,92	1,70	1,58	1,46	1,44
29/08/2011	3,21	2,30	2,13	1,90	1,68	1,58	1,48	1,45
05/09/2011	nq	nq	nq	nq	nq	nq	nq	nq
12/09/2011	3,21	2,30	2,10	1,86	1,63	1,58	1,48	1,45
19/09/2011	3,21	2,30	2,09	1,85	1,62	1,58	1,48	1,45
26/09/2011	3,21	2,30	2,09	1,85	1,62	1,58	1,48	1,45
03/10/2011	3,21	2,30	2,09	1,85	1,62	1,58	1,48	1,45
10/10/2011	3,21	2,30	2,09	1,85	1,62	1,58	1,48	1,45
17/10/2011	3,22	2,31	2,09	1,85	1,62	1,58	1,49	1,46
24/10/2011	3,23	2,32	2,10	1,85	1,62	1,58	1,50	1,48
31/10/2011	3,25	2,35	2,13	1,85	1,62	1,58	1,51	1,50
07/11/2011	3,29	2,38	2,16	1,86	1,62	1,58	1,52	1,51
14/11/2011	3,34	2,42	2,20	1,88	1,63	1,59	1,53	1,52
21/11/2011	3,40	2,46	2,24	1,90	1,63	1,59	1,53	1,52
28/11/2011	3,46	2,52	2,29	1,93	1,65	1,59	1,53	1,52
05/12/2011	3,54	2,58	2,34	1,96	1,67	1,59	1,53	1,52
12/12/2011	3,61	2,64	2,40	2,00	1,69	1,59	1,53	1,52
19/12/2011	3,68	2,70	2,46	2,04	1,71	1,59	1,53	1,52
23/12/2011	3,75	2,77	2,53	2,08	1,73	1,59	1,53	1,52
MEDIA	3,43	2,45	2,26	1,94	1,66	1,53	1,40	1,39

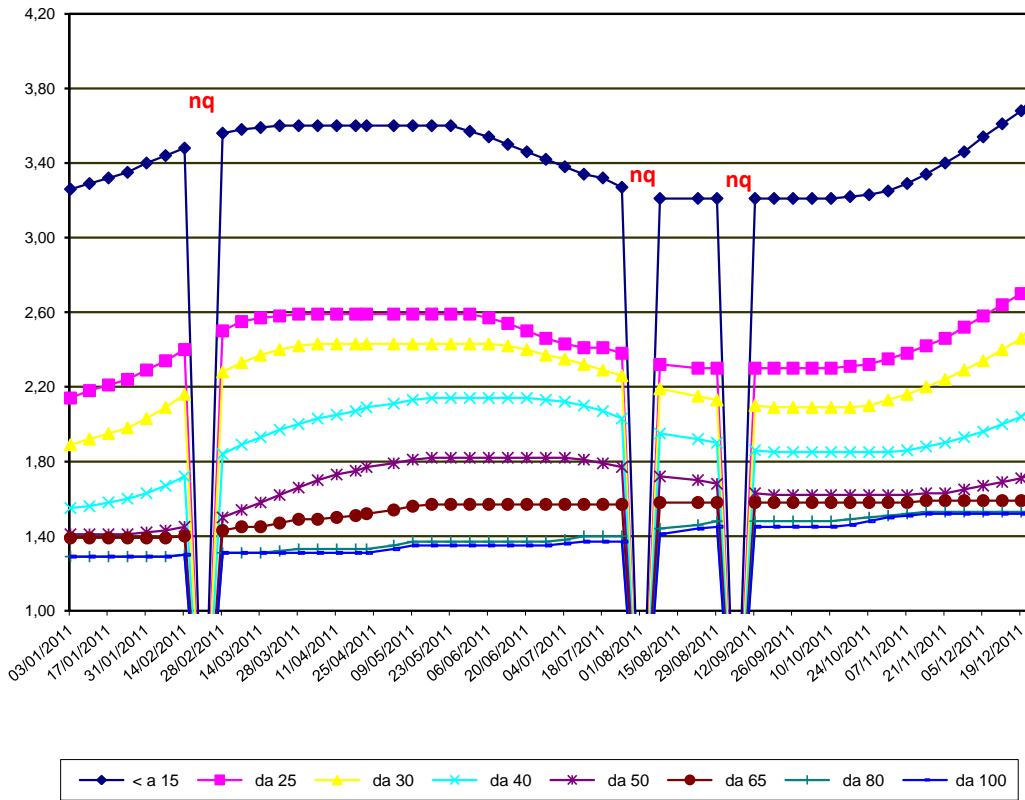
nq = non quotati

MILANO 2011

SETTIMANE	SUINI DA MACELLO (€/Kg)						
	90/115	da 115	da 130	da 144	da 156	da 176	> 176
03/01/2011	nq	nq	nq	nq	nq	nq	nq
10/01/2011	nq	nq	nq	nq	nq	nq	nq
17/01/2011	nq	nq	nq	nq	nq	nq	nq
24/01/2011	nq	1,140	1,140	1,150	1,225	1,225	1,200
31/01/2011	nq	1,160	1,160	1,170	1,245	1,245	1,220
07/02/2011	nq	1,195	1,195	1,205	1,280	1,280	1,255
14/02/2011	nq	nq	nq	nq	nq	nq	nq
21/02/2011	nq	nq	nq	nq	nq	nq	nq
28/02/2011	nq	nq	nq	nq	nq	nq	nq
07/03/2011	nq	nq	nq	nq	nq	nq	nq
14/03/2011	nq	1,180	1,180	1,190	1,265	1,265	1,240
21/03/2011	nq	nq	nq	nq	nq	nq	nq
28/03/2011	nq	nq	nq	nq	nq	nq	nq
04/04/2011	nq	1,180	1,180	1,190	1,265	1,265	1,240
11/04/2011	nq	1,177	1,177	1,187	1,262	1,262	1,237
18/04/2011	nq	1,205	1,205	1,215	1,290	1,290	1,265
22/04/2011	nq	1,240	1,240	1,250	1,325	1,325	1,300
02/05/2011	nq	1,275	1,275	1,285	1,360	1,360	1,335
09/05/2011	nq	1,275	1,275	1,285	1,360	1,360	1,335
16/05/2011	nq	1,270	1,270	1,280	1,355	1,355	1,330
23/05/2011	nq	1,270	1,270	1,280	1,355	1,355	1,330
30/05/2011	nq	1,275	1,275	1,285	1,360	1,360	1,335
06/06/2011	nq	1,255	1,255	1,265	1,340	1,340	1,315
13/06/2011	nq	1,255	1,255	1,265	1,340	1,340	1,315
20/06/2011	nq	1,285	1,285	1,295	1,370	1,370	1,345
27/06/2011	nq	1,310	1,310	1,320	1,395	1,395	1,370
04/07/2011	nq	1,310	1,310	1,320	1,395	1,395	1,370
11/07/2011	nq	1,315	1,315	1,325	1,400	1,400	1,375
18/07/2011	nq	1,325	1,325	1,335	1,410	1,410	1,385
25/07/2011	nq	1,333	1,333	1,343	1,418	1,418	1,393
01/08/2011	nq	1,338	1,338	1,348	1,423	1,423	1,398
08/08/2011	nq	1,385	1,385	1,395	1,470	1,470	1,445
22/08/2011	nq	1,445	1,445	1,455	1,530	1,530	1,505
29/08/2011	nq	nq	nq	nq	nq	nq	nq
05/09/2011	nq	nq	nq	nq	nq	nq	nq
12/09/2011	nq	1,433	1,433	1,443	1,518	1,518	1,493
19/09/2011	nq	1,450	1,450	1,460	1,535	1,535	1,510
26/09/2011	nq	1,465	1,465	1,475	1,550	1,550	1,525
03/10/2011	nq	1,465	1,465	1,475	1,550	1,550	1,525
10/10/2011	nq	1,465	1,465	1,475	1,550	1,550	1,525
17/10/2011	nq	1,470	1,470	1,480	1,555	1,555	1,530
24/10/2011	nq	1,480	1,480	1,490	1,565	1,565	1,540
31/10/2011	nq	1,485	1,485	1,495	1,570	1,570	1,545
07/11/2011	nq	1,491	1,491	1,501	1,576	1,576	1,551
14/11/2011	nq	nr	nr	nr	nr	nr	nr
21/11/2011	nq	nq	nq	nq	nq	nq	nq
28/11/2011	nq	1,470	1,470	1,480	1,555	1,555	1,530
05/12/2011	nq	1,445	1,445	1,455	1,530	1,530	1,505
12/12/2011	nq	1,435	1,435	1,445	1,520	1,520	1,495
19/12/2011	nq	1,410	1,410	1,420	1,495	1,495	1,470
23/12/2011	nq	1,395	1,395	1,405	1,480	1,480	1,455
MEDIA	nq	1,336	1,336	1,346	1,421	1,421	1,396

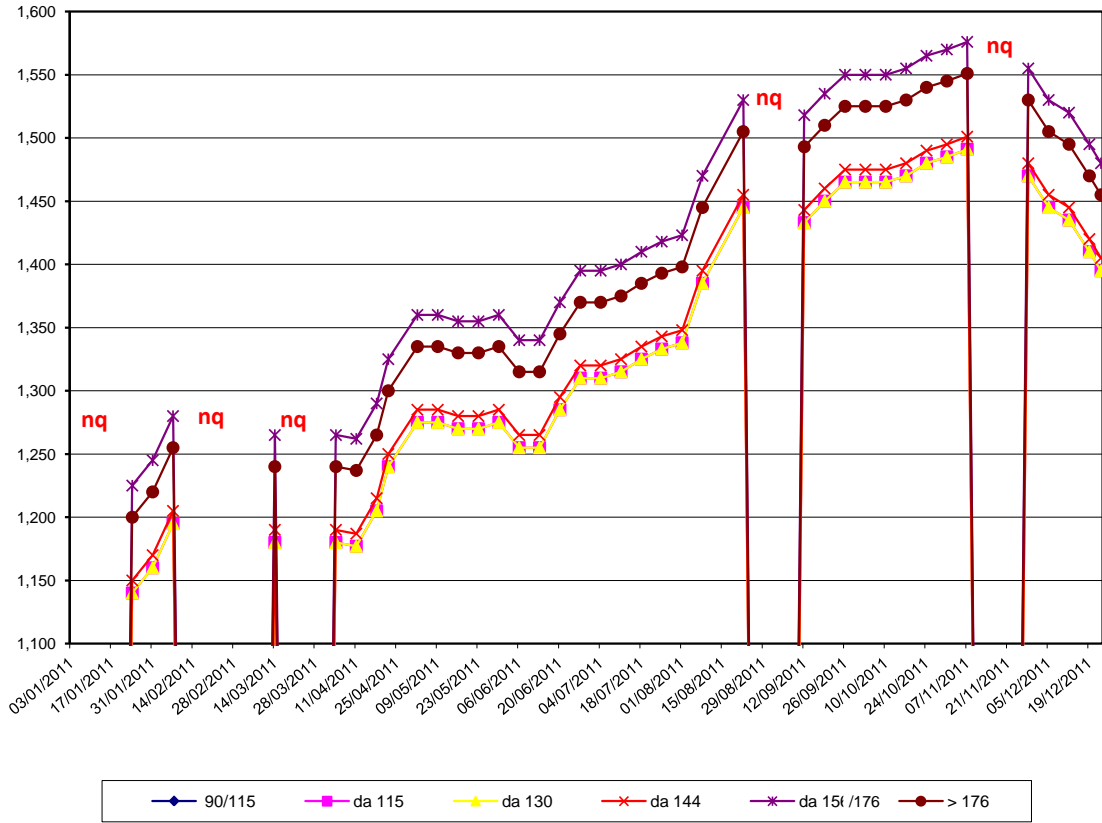
nq = non quotati

MILANO 2011
TREND SUINI D'ALLEVAMENTO
 (Euro/Kg)



nq = non quotati

MILANO 2011
TREND SUINI DA MACELLO
 (Euro/Kg)



nq = non quotati