



PERUGIA 2009

CAMERA DI COMMERCIO DI PERUGIA

Categoria: SUINI VIVI

Prezzi: (Franco Partenza) Per Kg peso vivo - IVA esclusa

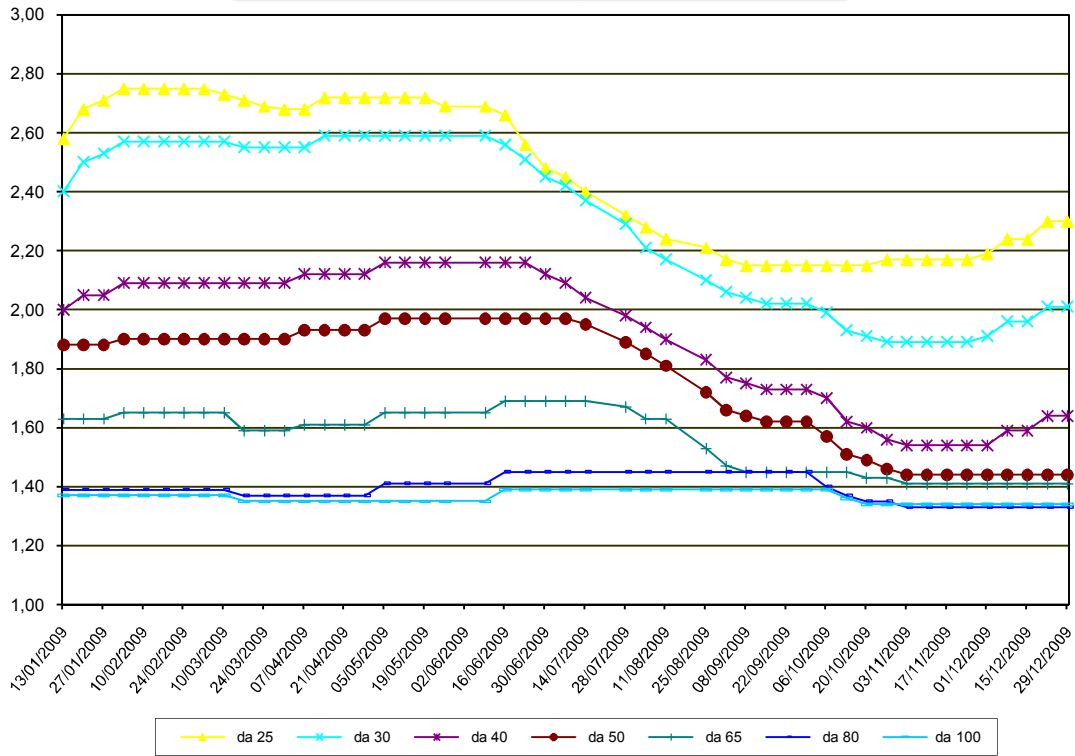
di Cosmino Giovanni Basile

SETTIMANE	SUINI D'ALLEVAMENTO (€/Kg)								
	da 6	da 15	da 25	da 30	da 40	da 50	da 65	da 80	da 100
13/01/2009	6,01	3,57	2,58	2,40	2,00	1,88	1,63	1,39	1,37
20/01/2009	6,11	3,67	2,68	2,50	2,05	1,88	1,63	1,39	1,37
27/01/2009	6,15	3,70	2,71	2,53	2,05	1,88	1,63	1,39	1,37
03/02/2009	6,19	3,74	2,75	2,57	2,09	1,90	1,65	1,39	1,37
10/02/2009	6,19	3,74	2,75	2,57	2,09	1,90	1,65	1,39	1,37
17/02/2009	6,19	3,74	2,75	2,57	2,09	1,90	1,65	1,39	1,37
24/02/2009	6,19	3,74	2,75	2,57	2,09	1,90	1,65	1,39	1,37
03/03/2009	6,19	3,74	2,75	2,57	2,09	1,90	1,65	1,39	1,37
10/03/2009	6,19	3,72	2,73	2,57	2,09	1,90	1,65	1,39	1,37
17/03/2009	6,17	3,70	2,71	2,55	2,09	1,90	1,59	1,37	1,35
24/03/2009	6,17	3,67	2,69	2,55	2,09	1,90	1,59	1,37	1,35
31/03/2009	6,15	3,65	2,68	2,55	2,09	1,90	1,59	1,37	1,35
07/04/2009	6,15	3,65	2,68	2,55	2,12	1,93	1,61	1,37	1,35
14/04/2009	6,15	3,69	2,72	2,59	2,12	1,93	1,61	1,37	1,35
21/04/2009	6,15	3,69	2,72	2,59	2,12	1,93	1,61	1,37	1,35
28/04/2009	6,15	3,69	2,72	2,59	2,12	1,93	1,61	1,37	1,35
05/05/2009	6,15	3,69	2,72	2,59	2,16	1,97	1,65	1,41	1,35
12/05/2009	6,15	3,69	2,72	2,59	2,16	1,97	1,65	1,41	1,35
19/05/2009	6,15	3,69	2,72	2,59	2,16	1,97	1,65	1,41	1,35
26/05/2009	6,12	3,66	2,69	2,59	2,16	1,97	1,65	1,41	1,35
09/06/2009	6,12	3,66	2,69	2,59	2,16	1,97	1,65	1,41	1,35
16/06/2009	6,09	3,63	2,66	2,56	2,16	1,97	1,69	1,45	1,39
23/06/2009	5,79	3,43	2,56	2,51	2,16	1,97	1,69	1,45	1,39
30/06/2009	5,71	3,35	2,48	2,45	2,12	1,97	1,69	1,45	1,39
07/07/2009	5,63	3,32	2,45	2,42	2,09	1,97	1,69	1,45	1,39
14/07/2009	5,58	3,27	2,40	2,37	2,04	1,95	1,69	1,45	1,39
28/07/2009	5,38	3,19	2,32	2,29	1,98	1,89	1,67	1,45	1,39
04/08/2009	5,38	3,19	2,28	2,21	1,94	1,85	1,63	1,45	1,39
11/08/2009	5,38	3,15	2,24	2,17	1,90	1,81	1,63	1,45	1,39
25/08/2009	5,38	3,12	2,21	2,10	1,83	1,72	1,53	1,45	1,39
01/09/2009	5,34	3,08	2,17	2,06	1,77	1,66	1,47	1,45	1,39
08/09/2009	5,34	3,08	2,15	2,04	1,75	1,64	1,45	1,45	1,39
15/09/2009	5,34	3,08	2,15	2,02	1,73	1,62	1,45	1,45	1,39
22/09/2009	5,34	3,08	2,15	2,02	1,73	1,62	1,45	1,45	1,39
29/09/2009	5,34	3,08	2,15	2,02	1,73	1,62	1,45	1,45	1,39
06/10/2009	5,34	3,08	2,15	1,99	1,70	1,57	1,45	1,40	1,39
13/10/2009	5,30	3,08	2,15	1,93	1,62	1,51	1,45	1,37	1,36
20/10/2009	5,30	3,08	2,15	1,91	1,60	1,49	1,43	1,35	1,34
27/10/2009	5,30	3,13	2,17	1,89	1,56	1,46	1,43	1,35	1,34
03/11/2009	5,30	3,13	2,17	1,89	1,54	1,44	1,41	1,33	1,34
10/11/2009	5,30	3,13	2,17	1,89	1,54	1,44	1,41	1,33	1,34
17/11/2009	5,30	3,13	2,17	1,89	1,54	1,44	1,41	1,33	1,34
24/11/2009	5,30	3,13	2,17	1,89	1,54	1,44	1,41	1,33	1,34
01/12/2009	5,32	2,15	2,19	1,91	1,54	1,44	1,41	1,33	1,34
08/12/2009	5,62	2,35	2,24	1,96	1,59	1,44	1,41	1,33	1,34
15/12/2009	5,62	3,35	2,24	1,96	1,59	1,44	1,41	1,33	1,34
22/12/2009	5,62	3,41	2,30	2,01	1,64	1,44	1,41	1,33	1,34
29/12/2009	5,62	3,41	2,30	2,01	1,64	1,44	1,41	1,33	1,34
MEDIA	5,76	3,38	2,46	2,29	1,91	1,76	1,56	1,39	1,36

PERUGIA 2009

SETTIMANE	SUINI DA MACELLO (€/Kg)							
	90/115	115/130	130/144	144/156	156/176	176/180	180/185	> 185
13/01/2009	1,310	1,220	1,230	1,250	1,280	1,240	1,200	1,170
20/01/2009	1,310	1,220	1,230	1,250	1,280	1,240	1,200	1,170
27/01/2009	1,280	1,190	1,200	1,220	1,250	1,210	1,170	1,140
03/02/2009	1,230	1,140	1,150	1,170	1,200	1,160	1,120	1,090
10/02/2009	1,190	1,100	1,110	1,130	1,160	1,120	1,080	1,050
17/02/2009	1,170	1,080	1,090	1,110	1,140	1,100	1,060	1,030
24/02/2009	1,140	1,050	1,060	1,080	1,110	1,070	1,030	1,000
03/03/2009	1,140	1,050	1,060	1,080	1,110	1,070	1,030	1,000
10/03/2009	1,190	1,030	1,040	1,060	1,090	1,050	1,010	0,980
17/03/2009	1,170	1,010	1,020	1,040	1,070	1,030	0,990	0,960
24/03/2009	1,170	1,010	1,020	1,040	1,070	1,030	0,990	0,960
31/03/2009	1,190	1,030	1,040	1,060	1,090	1,050	1,010	0,980
07/04/2009	1,230	1,070	1,080	1,100	1,130	1,090	1,050	1,020
14/04/2009	1,260	1,100	1,110	1,130	1,160	1,120	1,080	1,050
21/04/2009	1,250	1,090	1,100	1,120	1,150	1,110	1,070	1,040
28/04/2009	1,250	1,050	1,060	1,080	1,110	1,070	1,030	1,000
05/05/2009	1,190	0,990	1,000	1,020	1,050	1,010	0,970	0,940
12/05/2009	1,190	0,990	1,000	1,020	1,050	1,010	0,970	0,940
19/05/2009	1,240	1,040	1,050	1,070	1,100	1,060	1,020	0,990
26/05/2009	1,280	1,080	1,090	1,110	1,140	1,100	1,060	1,030
09/06/2009	1,280	1,080	1,090	1,110	1,140	1,100	1,060	1,030
16/06/2009	1,320	1,120	1,130	1,150	1,180	1,140	1,100	1,070
23/06/2009	1,380	1,160	1,170	1,190	1,220	1,180	1,140	1,110
30/06/2009	1,420	1,200	1,210	1,230	1,260	1,220	1,180	1,150
07/07/2009	1,400	1,160	1,170	1,210	1,240	1,200	1,160	1,130
14/07/2009	1,360	1,120	1,130	1,170	1,200	1,160	1,120	1,090
28/07/2009	1,450	1,170	1,180	1,220	1,250	1,210	1,170	1,140
04/08/2009	1,480	1,200	1,210	1,250	1,280	1,240	1,200	1,170
11/08/2009	1,520	1,240	1,250	1,290	1,320	1,280	1,240	1,210
25/08/2009	1,520	1,310	1,320	1,360	1,390	1,350	1,310	1,280
01/09/2009	1,520	1,310	1,320	1,360	1,390	1,350	1,310	1,280
08/09/2009	1,500	1,290	1,300	1,340	1,370	1,330	1,290	1,260
15/09/2009	1,460	1,250	1,260	1,300	1,330	1,290	1,250	1,220
22/09/2009	1,460	1,250	1,260	1,300	1,330	1,290	1,250	1,220
29/09/2009	1,500	1,290	1,300	1,340	1,370	1,330	1,290	1,260
06/10/2009	1,500	1,290	1,300	1,340	1,370	1,330	1,290	1,260
13/10/2009	1,440	1,260	1,270	1,310	1,340	1,300	1,270	1,240
20/10/2009	1,420	1,240	1,250	1,290	1,320	1,280	1,250	1,220
27/10/2009	1,410	1,230	1,240	1,280	1,310	1,270	1,240	1,210
03/11/2009	1,390	1,210	1,220	1,260	1,310	1,270	1,240	1,210
10/11/2009	1,370	1,190	1,200	1,240	1,290	1,250	1,220	1,190
17/11/2009	1,370	1,190	1,200	1,240	1,290	1,250	1,220	1,190
24/11/2009	1,370	1,190	1,200	1,240	1,290	1,250	1,220	1,190
01/12/2009	1,370	1,190	1,200	1,240	1,290	1,250	1,220	1,190
08/12/2009	1,370	1,190	1,200	1,240	1,290	1,250	1,220	1,190
15/12/2009	1,370	1,190	1,200	1,240	1,290	1,250	1,220	1,190
22/12/2009	1,350	1,170	1,180	1,220	1,270	1,230	1,200	1,170
29/12/2009	1,350	1,170	1,180	1,220	1,270	1,230	1,200	1,170
MEDIA	1,334	1,154	1,164	1,194	1,228	1,188	1,150	1,120

PERUGIA 2009
SUINI D'ALLEVAMENTO
 (Euro/Kg)



nr = non rilevati

PERUGIA 2009
SUINI DA MACELLO
 (Euro/Kg)

