



BRESCIA 2000

CAMERA DI COMMERCIO DI BRESCIA

Categoria: SUINI VIVI

Prezzi: (Franco Partenza) Per Kg peso vivo - IVA esclusa

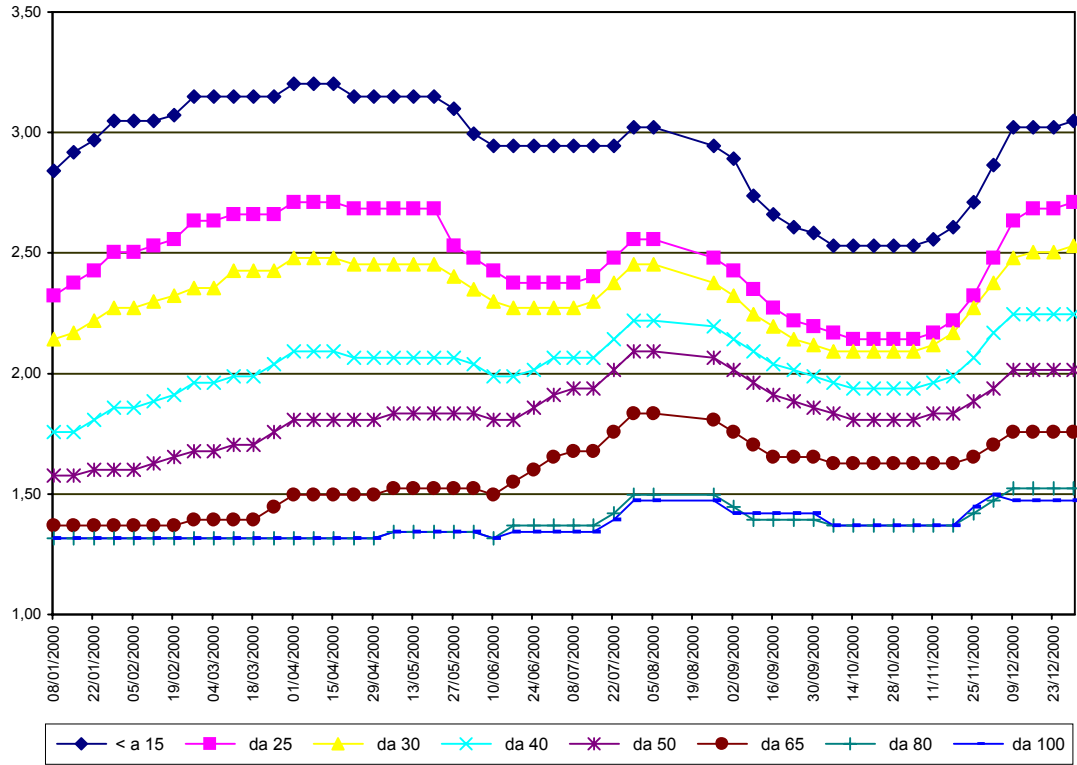
SETTIMANE	SUINI D'ALLEVAMENTO €/Kg)							
	< a 15	da 25	da 30	da 40	da 50	da 65	da 80	da 100
08/01/2000	2,84	2,32	2,14	1,76	1,58	1,37	1,32	1,32
15/01/2000	2,92	2,38	2,17	1,76	1,58	1,37	1,32	1,32
22/01/2000	2,97	2,43	2,22	1,81	1,60	1,37	1,32	1,32
29/01/2000	3,05	2,50	2,27	1,86	1,60	1,37	1,32	1,32
05/02/2000	3,05	2,50	2,27	1,86	1,60	1,37	1,32	1,32
12/02/2000	3,05	2,53	2,30	1,89	1,63	1,37	1,32	1,32
19/02/2000	3,07	2,56	2,32	1,91	1,65	1,37	1,32	1,32
26/02/2000	3,15	2,63	2,36	1,96	1,68	1,39	1,32	1,32
04/03/2000	3,15	2,63	2,36	1,96	1,68	1,39	1,32	1,32
11/03/2000	3,15	2,66	2,43	1,99	1,70	1,39	1,32	1,32
18/03/2000	3,15	2,66	2,43	1,99	1,70	1,39	1,32	1,32
25/03/2000	3,15	2,66	2,43	2,04	1,76	1,45	1,32	1,32
01/04/2000	3,20	2,71	2,48	2,09	1,81	1,50	1,32	1,32
08/04/2000	3,20	2,71	2,48	2,09	1,81	1,50	1,32	1,32
15/04/2000	3,20	2,71	2,48	2,09	1,81	1,50	1,32	1,32
22/04/2000	3,15	2,69	2,45	2,07	1,81	1,50	1,32	1,32
29/04/2000	3,15	2,69	2,45	2,07	1,81	1,50	1,32	1,32
06/05/2000	3,15	2,69	2,45	2,07	1,83	1,52	1,34	1,34
13/05/2000	3,15	2,69	2,45	2,07	1,83	1,52	1,34	1,34
20/05/2000	3,15	2,69	2,45	2,07	1,83	1,52	1,34	1,34
27/05/2000	3,10	2,53	2,40	2,07	1,83	1,52	1,34	1,34
03/06/2000	3,00	2,48	2,35	2,04	1,83	1,52	1,34	1,34
10/06/2000	2,94	2,43	2,30	1,99	1,81	1,50	1,32	1,32
17/06/2000	2,94	2,38	2,27	1,99	1,81	1,55	1,37	1,34
24/06/2000	2,94	2,38	2,27	2,01	1,86	1,60	1,37	1,34
01/07/2000	2,94	2,38	2,27	2,07	1,91	1,65	1,37	1,34
08/07/2000	2,94	2,38	2,27	2,07	1,94	1,68	1,37	1,34
15/07/2000	2,94	2,40	2,30	2,07	1,94	1,68	1,37	1,34
22/07/2000	2,94	2,48	2,38	2,14	2,01	1,76	1,42	1,39
29/07/2000	3,02	2,56	2,45	2,22	2,09	1,83	1,50	1,47
05/08/2000	3,02	2,56	2,45	2,22	2,09	1,83	1,50	1,47
26/08/2000	2,94	2,48	2,38	2,19	2,07	1,81	1,50	1,47
02/09/2000	2,89	2,43	2,32	2,14	2,01	1,76	1,45	1,42
09/09/2000	2,74	2,35	2,25	2,09	1,96	1,70	1,39	1,42
16/09/2000	2,66	2,27	2,19	2,04	1,91	1,65	1,39	1,42
23/09/2000	2,61	2,22	2,14	2,01	1,89	1,65	1,39	1,42
30/09/2000	2,58	2,19	2,12	1,99	1,86	1,65	1,39	1,42
07/10/2000	2,53	2,17	2,09	1,96	1,83	1,63	1,37	1,37
14/10/2000	2,53	2,14	2,09	1,94	1,81	1,63	1,37	1,37
21/10/2000	2,53	2,14	2,09	1,94	1,81	1,63	1,37	1,37
28/10/2000	2,53	2,14	2,09	1,94	1,81	1,63	1,37	1,37
04/11/2000	2,53	2,14	2,09	1,94	1,81	1,63	1,37	1,37
11/11/2000	2,56	2,17	2,12	1,96	1,83	1,63	1,37	1,37
18/11/2000	2,61	2,22	2,17	1,99	1,83	1,63	1,37	1,37
25/11/2000	2,71	2,32	2,27	2,07	1,89	1,65	1,42	1,45
02/12/2000	2,87	2,48	2,38	2,17	1,94	1,70	1,47	1,50
09/12/2000	3,02	2,63	2,48	2,25	2,01	1,76	1,52	1,47
16/12/2000	3,02	2,69	2,50	2,25	2,01	1,76	1,52	1,47
23/12/2000	3,02	2,69	2,50	2,25	2,01	1,76	1,52	1,47
30/12/2000	3,05	2,71	2,53	2,25	2,01	1,76	1,52	1,47
MEDIA	2,93	2,47	2,32	2,03	1,83	1,58	1,38	1,37

BRESCIA 2000

SETTIMANE	SUINI DA MACELLO (€/Kg)							
	90/115	115/130	130/144	144/156	156/176	176/180	180/185	> 185
08/01/2000	nq	1,136	1,224	1,255	1,276	1,214	1,136	1,110
15/01/2000	nq	1,090	1,178	1,209	1,229	1,167	1,090	1,064
22/01/2000	nq	1,038	1,126	1,157	1,178	1,116	1,038	1,012
29/01/2000	nq	1,038	1,110	1,141	1,162	1,100	1,023	0,997
05/02/2000	nq	1,038	1,110	1,141	1,162	1,100	1,023	0,997
12/02/2000	nq	1,038	1,131	1,162	1,183	1,121	1,043	1,017
19/02/2000	nq	1,038	1,157	1,203	1,224	1,147	1,069	1,017
26/02/2000	nq	1,038	1,157	1,203	1,224	1,147	1,069	1,017
04/03/2000	nq	1,038	1,141	1,188	1,209	1,131	1,054	1,002
11/03/2000	nq	1,038	1,141	1,188	1,209	1,131	1,054	1,002
18/03/2000	nq	1,038	1,141	1,188	1,209	1,131	1,054	1,002
25/03/2000	nq	1,038	1,141	1,188	1,209	1,131	1,054	1,002
01/04/2000	nq	1,012	1,105	1,136	1,157	1,079	1,028	0,981
08/04/2000	nq	0,992	1,085	1,110	1,131	1,054	1,002	0,955
15/04/2000	nq	0,955	1,059	1,074	1,095	1,017	0,966	0,919
22/04/2000	nq	0,966	1,069	1,085	1,105	1,028	0,976	0,930
29/04/2000	nq	0,966	1,069	1,085	1,105	1,028	0,976	0,930
06/05/2000	nq	0,966	1,069	1,085	1,105	1,028	0,976	0,930
13/05/2000	nq	0,966	1,069	1,085	1,105	1,028	0,976	0,930
20/05/2000	nq	0,966	1,033	1,048	1,069	0,992	0,940	0,893
27/05/2000	nq	0,930	0,997	1,012	1,033	0,955	0,914	0,878
03/06/2000	nq	0,930	0,971	0,976	0,986	0,930	0,878	0,852
10/06/2000	nq	0,914	0,955	0,961	0,971	0,914	0,862	0,837
17/06/2000	nq	0,940	0,981	0,986	1,023	0,955	0,904	0,878
24/06/2000	nq	0,992	1,033	1,048	1,085	1,017	0,955	0,930
01/07/2000	nq	1,033	1,095	1,110	1,136	1,059	0,997	0,955
08/07/2000	nq	1,033	1,095	1,110	1,136	1,059	0,997	0,955
15/07/2000	nq	1,059	1,121	1,136	1,162	1,085	1,023	0,981
22/07/2000	nq	1,136	1,198	1,214	1,239	1,162	1,085	1,043
29/07/2000	nq	1,229	1,291	1,307	1,332	1,255	1,178	1,136
05/08/2000	nq	1,229	1,291	1,307	1,332	1,255	1,178	1,136
26/08/2000	nq	1,291	1,353	1,369	1,394	1,317	1,239	1,188
02/09/2000	nq	1,260	1,322	1,338	1,363	1,286	1,209	1,157
09/09/2000	nq	1,260	1,322	1,338	1,363	1,286	1,209	1,157
16/09/2000	nq	1,286	1,348	1,363	1,389	1,312	1,234	1,183
23/09/2000	nq	1,389	1,451	1,467	1,493	1,415	1,338	1,286
30/09/2000	nq	1,348	1,410	1,425	1,451	1,374	1,296	1,245
07/10/2000	nq	1,296	1,358	1,374	1,400	1,322	1,245	1,193
14/10/2000	nq	1,327	1,389	1,410	1,436	1,348	1,270	1,219
21/10/2000	nq	1,332	1,394	1,415	1,441	1,353	1,276	1,224
28/10/2000	nq	1,332	1,394	1,415	1,441	1,353	1,276	1,224
04/11/2000	nq	1,312	1,374	1,394	1,420	1,332	1,255	1,203
11/11/2000	nq	1,327	1,389	1,410	1,436	1,348	1,270	1,219
18/11/2000	nq	1,369	1,431	1,451	1,477	1,389	1,312	1,245
25/11/2000	nq	1,446	1,498	1,518	1,544	1,441	1,363	1,296
02/12/2000	nq	1,472	1,524	1,560	1,570	1,467	1,389	1,322
09/12/2000	nq	1,446	1,498	1,534	1,544	1,441	1,389	1,322
16/12/2000	nq	1,446	1,498	1,534	1,544	1,441	1,389	1,322
23/12/2000	nq	1,446	1,498	1,534	1,544	1,441	1,389	1,322
30/12/2000	nq	1,446	1,498	1,534	1,544	1,441	1,389	1,322
MEDIA	nq	1,153	1,226	1,250	1,272	1,193	1,125	1,079

nq = non quotati

BRESCIA 2000
SUINI D'ALLEVAMENTO
 (Euro/Kg)



BRESCIA 2000
SUINI DA MACELLO
 (Euro/Kg)

