



MILANO 2006

CAMERA DI COMMERCIO DI MILANO

Categoria: SUINI VIVI

Prezzi: (Franco Partenza) Per Kg peso vivo - IVA esclusa

di Cosmino Giovanni Basile

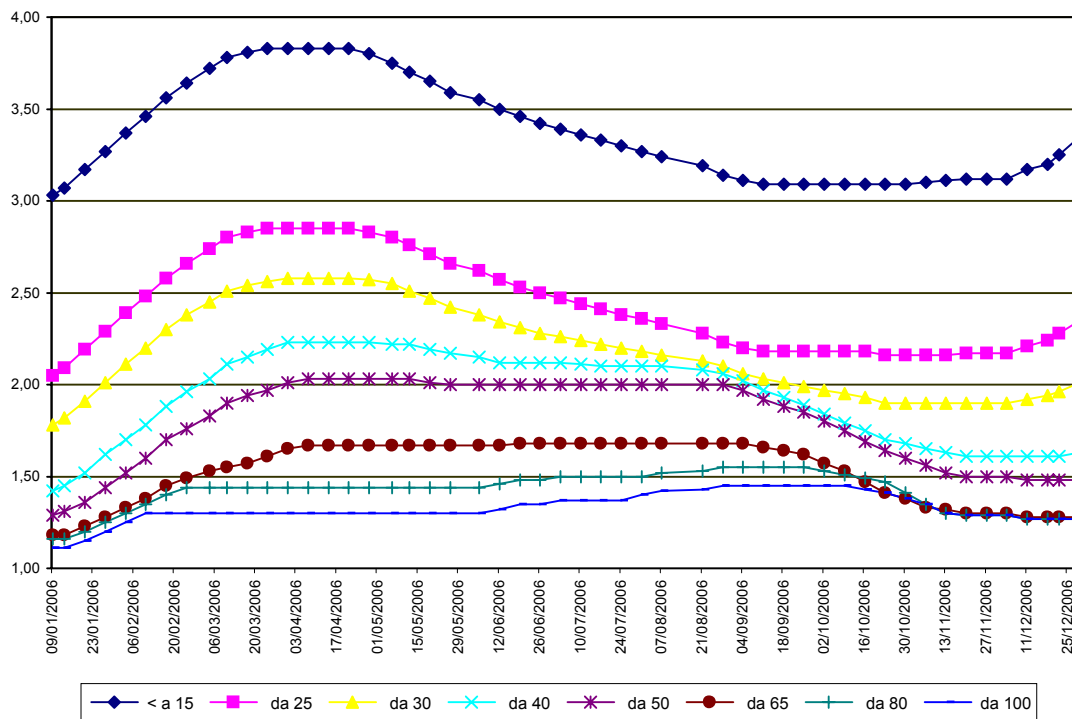
SETTIMANE	SUINI D'ALLEVAMENTO (€/Kg)							
	< a 15	da 25	da 30	da 40	da 50	da 65	da 80	da 100
09/01/2006	3,03	2,05	1,78	1,42	1,29	1,18	1,16	1,11
13/01/2006	3,07	2,09	1,82	1,45	1,31	1,18	1,16	1,11
20/01/2006	3,17	2,19	1,91	1,52	1,36	1,23	1,20	1,15
27/01/2006	3,27	2,29	2,01	1,62	1,44	1,28	1,25	1,20
03/02/2006	3,37	2,39	2,11	1,70	1,52	1,33	1,30	1,25
10/02/2006	3,46	2,48	2,20	1,78	1,60	1,38	1,35	1,30
17/02/2006	3,56	2,58	2,30	1,88	1,70	1,45	1,40	1,30
24/02/2006	3,64	2,66	2,38	1,96	1,76	1,49	1,44	1,30
04/03/2006	3,72	2,74	2,45	2,03	1,83	1,53	1,44	1,30
10/03/2006	3,78	2,80	2,51	2,11	1,90	1,55	1,44	1,30
17/03/2006	3,81	2,83	2,54	2,15	1,94	1,57	1,44	1,30
24/03/2006	3,83	2,85	2,56	2,19	1,97	1,61	1,44	1,30
31/03/2006	3,83	2,85	2,58	2,23	2,01	1,65	1,44	1,30
07/04/2006	3,83	2,85	2,58	2,23	2,03	1,67	1,44	1,30
14/04/2006	3,83	2,85	2,58	2,23	2,03	1,67	1,44	1,30
21/04/2006	3,83	2,85	2,58	2,23	2,03	1,67	1,44	1,30
28/04/2006	3,80	2,83	2,57	2,23	2,03	1,67	1,44	1,30
06/05/2006	3,75	2,80	2,55	2,22	2,03	1,67	1,44	1,30
12/05/2006	3,70	2,76	2,51	2,22	2,03	1,67	1,44	1,30
19/05/2006	3,65	2,71	2,47	2,19	2,01	1,67	1,44	1,30
26/05/2006	3,59	2,66	2,42	2,17	2,00	1,67	1,44	1,30
05/06/2006	3,55	2,62	2,38	2,15	2,00	1,67	1,44	1,30
12/06/2006	3,50	2,57	2,34	2,12	2,00	1,67	1,46	1,32
19/06/2006	3,46	2,53	2,31	2,12	2,00	1,68	1,48	1,35
26/06/2006	3,42	2,50	2,28	2,12	2,00	1,68	1,48	1,35
03/07/2006	3,39	2,47	2,26	2,12	2,00	1,68	1,50	1,37
10/07/2006	3,36	2,44	2,24	2,11	2,00	1,68	1,50	1,37
17/07/2006	3,33	2,41	2,22	2,10	2,00	1,68	1,50	1,37
24/07/2006	3,30	2,38	2,20	2,10	2,00	1,68	1,50	1,37
31/07/2006	3,27	2,36	2,18	2,10	2,00	1,68	1,50	1,40
07/08/2006	3,24	2,33	2,16	2,10	2,00	1,68	1,52	1,42
21/08/2006	3,19	2,28	2,13	2,08	2,00	1,68	1,53	1,43
28/08/2006	3,14	2,23	2,10	2,06	2,00	1,68	1,55	1,45
04/09/2006	3,11	2,20	2,06	2,02	1,97	1,68	1,55	1,45
11/09/2006	3,09	2,18	2,03	1,97	1,92	1,66	1,55	1,45
18/09/2006	3,09	2,18	2,01	1,93	1,88	1,64	1,55	1,45
25/09/2006	3,09	2,18	1,99	1,89	1,85	1,62	1,55	1,45
02/10/2006	3,09	2,18	1,97	1,84	1,80	1,57	1,53	1,45
09/10/2006	3,09	2,18	1,95	1,79	1,75	1,53	1,51	1,45
16/10/2006	3,09	2,18	1,93	1,75	1,69	1,47	1,49	1,43
23/10/2006	3,09	2,16	1,90	1,70	1,64	1,41	1,47	1,41
30/10/2006	3,09	2,16	1,90	1,68	1,60	1,38	1,41	1,38
06/11/2006	3,10	2,16	1,90	1,65	1,56	1,33	1,35	1,35
13/11/2006	3,11	2,16	1,90	1,63	1,52	1,32	1,30	1,30
20/11/2006	3,12	2,17	1,90	1,61	1,50	1,30	1,29	1,29
27/11/2006	3,12	2,17	1,90	1,61	1,50	1,30	1,29	1,29
04/12/2006	3,12	2,17	1,90	1,61	1,50	1,30	1,29	1,29
11/12/2006	3,17	2,21	1,92	1,61	1,48	1,28	1,27	1,27
18/12/2006	3,20	2,24	1,94	1,61	1,48	1,28	1,27	1,27
22/12/2006	3,25	2,28	1,96	1,61	1,48	1,28	1,27	1,27
29/12/2006	3,35	2,35	2,01	1,63	1,48	1,28	1,27	1,27
MEDIA	3,37	2,43	2,18	1,93	1,79	1,52	1,41	1,33

MILANO 2006

SETTIMANE	SUINI DA MACELLO (€/Kg)						
	90/115	da 115	da 130	da 144	da 156	da 176	> 176
09/01/2006	1,135	1,020	1,040	1,070	1,115	1,115	1,010
13/01/2006	1,165	1,050	1,070	1,100	1,145	1,145	1,040
20/01/2006	1,245	1,130	1,150	1,180	1,225	1,225	1,120
27/01/2006	1,340	1,225	1,245	1,275	1,320	1,320	1,215
03/02/2006	1,345	1,230	1,250	1,280	1,325	1,325	1,220
10/02/2006	1,325	1,210	1,230	1,260	1,305	1,305	1,200
17/02/2006	1,275	1,160	1,180	1,210	1,255	1,255	1,150
24/02/2006	1,235	1,120	1,140	1,170	1,215	1,215	1,110
04/03/2006	1,235	1,120	1,140	1,170	1,215	1,215	1,110
17/03/2006	1,260	1,145	1,165	1,195	1,240	1,240	1,135
24/03/2006	1,270	1,155	1,175	1,205	1,250	1,250	1,145
31/03/2006	1,255	1,140	1,160	1,190	1,235	1,235	1,130
07/04/2006	1,220	1,105	1,125	1,155	1,200	1,200	1,095
14/04/2006	1,215	1,100	1,120	1,150	1,195	1,195	1,090
21/04/2006	1,205	1,090	1,110	1,140	1,185	1,185	1,080
28/04/2006	1,180	1,065	1,085	1,115	1,160	1,160	1,055
06/05/2006	1,150	1,035	1,055	1,085	1,130	1,130	1,025
19/05/2006	1,080	1,000	1,000	1,015	1,060	1,060	0,955
26/05/2006	1,120	1,040	1,040	1,055	1,095	1,095	0,990
05/06/2006	1,175	1,095	1,095	1,110	1,150	1,150	1,045
12/06/2006	1,240	1,160	1,160	1,175	1,215	1,215	1,110
19/06/2006	1,305	1,225	1,225	1,240	1,280	1,280	1,175
26/06/2006	1,310	1,230	1,230	1,245	1,285	1,285	1,180
03/07/2006	1,290	1,210	1,210	1,225	1,265	1,265	1,160
17/07/2006	1,235	1,155	1,155	1,170	1,210	1,210	1,105
24/07/2006	1,315	1,235	1,235	1,250	1,290	1,290	1,185
31/07/2006	1,340	1,260	1,260	1,275	1,315	1,315	1,210
07/08/2006	1,340	1,260	1,260	1,275	1,315	1,315	1,210
21/08/2006	1,400	1,320	1,320	1,335	1,375	1,375	1,270
04/09/2006	1,400	1,320	1,320	1,335	1,375	1,375	1,270
11/09/2006	1,390	1,310	1,310	1,325	1,365	1,365	1,260
18/09/2006	1,390	1,310	1,310	1,325	1,365	1,365	1,260
09/10/2006	1,300	1,220	1,230	1,250	1,305	1,305	1,210
16/10/2006	1,270	1,190	1,200	1,220	1,275	1,275	1,180
23/10/2006	1,260	1,180	1,190	1,210	1,265	1,265	1,170
30/10/2006	1,260	1,180	1,190	1,210	1,265	1,265	1,170
06/11/2006	1,260	1,180	1,190	1,210	1,265	1,265	1,170
13/11/2006	1,240	1,160	1,170	1,190	1,250	1,250	1,155
20/11/2006	1,240	1,160	1,170	1,190	1,250	1,250	1,155
27/11/2006	1,240	1,160	1,170	1,190	1,250	1,250	1,155
04/12/2006	1,235	1,155	1,165	1,185	1,245	1,245	1,150
11/12/2006	1,195	1,115	1,125	1,145	1,205	1,205	1,110
22/12/2006	1,145	1,065	1,075	1,095	1,155	1,155	1,060
29/12/2006	1,155	1,075	1,085	1,105	1,165	1,165	1,070
MEDIA	1,254	1,161	1,171	1,193	1,240	1,240	1,138

nq = non quotati

MILANO 2006
TREND SUINI D'ALLEVAMENTO
 (Euro/Kg)



MILANO 2006
TREND SUINI DA MACELLO
 (Euro/Kg)

