

**BRESCIA 1990**

**CAMERA DI COMMERCIO DI BRESCIA**

**Categoria: SUINI VIVI**

**Prezzi: (Franco Partenza) Per Kg peso vivo - IVA esclusa**

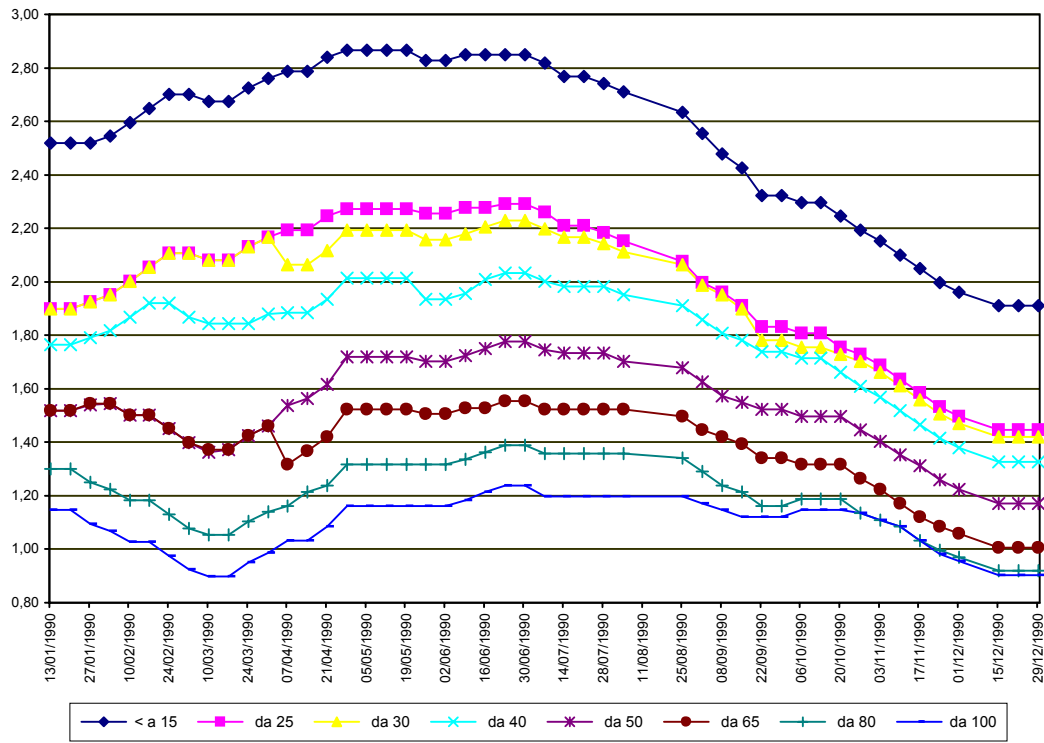
di Cosmino Giovanni Basile

SETTIMANE	SUINI D'ALLEVAMENTO (€/Kg)							
	< a 15	da 25	da 30	da 40	da 50	da 65	da 80	da 100
13/01/1990	2,52	1,90	1,90	1,77	1,52	1,52	1,30	1,15
20/01/1990	2,52	1,90	1,90	1,77	1,52	1,52	1,30	1,15
27/01/1990	2,52	1,93	1,93	1,79	1,54	1,54	1,25	1,09
03/02/1990	2,54	1,95	1,95	1,82	1,54	1,54	1,22	1,07
10/02/1990	2,60	2,00	2,00	1,87	1,50	1,50	1,18	1,03
17/02/1990	2,65	2,05	2,05	1,92	1,50	1,50	1,18	1,03
24/02/1990	2,70	2,11	2,11	1,92	1,45	1,45	1,13	0,98
03/03/1990	2,70	2,11	2,11	1,87	1,40	1,40	1,08	0,92
10/03/1990	2,67	2,08	2,08	1,84	1,36	1,37	1,05	0,90
17/03/1990	2,67	2,08	2,08	1,84	1,37	1,37	1,05	0,90
24/03/1990	2,73	2,13	2,13	1,84	1,42	1,42	1,10	0,95
31/03/1990	2,76	2,17	2,17	1,88	1,46	1,46	1,14	0,99
07/04/1990	2,79	2,19	2,06	1,88	1,54	1,32	1,16	1,03
14/04/1990	2,79	2,19	2,06	1,88	1,56	1,37	1,21	1,03
21/04/1990	2,84	2,25	2,12	1,94	1,62	1,42	1,24	1,08
28/04/1990	2,86	2,27	2,19	2,01	1,72	1,52	1,32	1,16
05/05/1990	2,86	2,27	2,19	2,01	1,72	1,52	1,32	1,16
12/05/1990	2,86	2,27	2,19	2,01	1,72	1,52	1,32	1,16
19/05/1990	2,86	2,27	2,19	2,01	1,72	1,52	1,32	1,16
26/05/1990	2,83	2,26	2,16	1,94	1,70	1,51	1,32	1,16
02/06/1990	2,83	2,26	2,16	1,94	1,70	1,51	1,32	1,16
09/06/1990	2,85	2,28	2,18	1,96	1,72	1,53	1,34	1,18
16/06/1990	2,85	2,28	2,20	2,01	1,75	1,53	1,36	1,21
23/06/1990	2,85	2,29	2,23	2,03	1,78	1,55	1,39	1,24
30/06/1990	2,85	2,29	2,23	2,03	1,78	1,55	1,39	1,24
07/07/1990	2,82	2,26	2,20	2,00	1,74	1,52	1,36	1,20
14/07/1990	2,77	2,21	2,17	1,98	1,73	1,52	1,36	1,20
21/07/1990	2,77	2,21	2,17	1,98	1,73	1,52	1,36	1,20
28/07/1990	2,74	2,18	2,14	1,98	1,73	1,52	1,36	1,20
04/08/1990	2,71	2,15	2,11	1,95	1,70	1,52	1,36	1,20
25/08/1990	2,63	2,08	2,06	1,91	1,68	1,50	1,34	1,20
01/09/1990	2,56	2,00	1,99	1,86	1,63	1,45	1,29	1,17
08/09/1990	2,48	1,96	1,95	1,81	1,57	1,42	1,24	1,15
15/09/1990	2,43	1,91	1,90	1,78	1,55	1,39	1,21	1,12
22/09/1990	2,32	1,83	1,78	1,74	1,52	1,34	1,16	1,12
29/09/1990	2,32	1,83	1,78	1,74	1,52	1,34	1,16	1,12
06/10/1990	2,30	1,81	1,76	1,71	1,50	1,32	1,19	1,15
13/10/1990	2,30	1,81	1,76	1,71	1,50	1,32	1,19	1,15
20/10/1990	2,25	1,76	1,73	1,66	1,50	1,32	1,19	1,15
27/10/1990	2,19	1,73	1,70	1,61	1,45	1,26	1,14	1,14
03/11/1990	2,15	1,69	1,66	1,57	1,40	1,22	1,11	1,11
10/11/1990	2,10	1,64	1,61	1,52	1,35	1,17	1,08	1,08
17/11/1990	2,05	1,58	1,56	1,47	1,31	1,12	1,03	1,03
24/11/1990	2,00	1,53	1,51	1,41	1,26	1,08	1,00	0,98
01/12/1990	1,96	1,50	1,47	1,38	1,22	1,06	0,97	0,95
15/12/1990	1,91	1,45	1,42	1,33	1,17	1,01	0,92	0,90
22/12/1990	1,91	1,45	1,42	1,33	1,17	1,01	0,92	0,90
29/12/1990	1,91	1,45	1,42	1,33	1,17	1,01	0,92	0,90
<b>MEDIA</b>	<b>2,54</b>	<b>2,00</b>	<b>1,96</b>	<b>1,80</b>	<b>1,54</b>	<b>1,39</b>	<b>1,20</b>	<b>1,09</b>

## BRESCIA 1990

SETTIMANE	SUINI DA MACELLO (€/Kg)					
	90/115	115/130	130/145	145/160	160/180	> 180
13/01/1990	nq	1,301	1,301	1,373	1,373	1,327
20/01/1990	nq	1,285	1,285	1,358	1,358	1,311
27/01/1990	nq	1,234	1,234	1,316	1,316	1,270
03/02/1990	nq	1,208	1,208	1,290	1,290	1,244
10/02/1990	nq	1,136	1,136	1,239	1,239	1,187
17/02/1990	nq	1,084	1,084	1,182	1,182	1,130
24/02/1990	nq	1,032	1,032	1,125	1,125	1,074
03/03/1990	nq	0,955	0,955	1,048	1,048	0,996
10/03/1990	nq	0,934	0,934	1,027	1,027	0,934
17/03/1990	nq	0,934	0,934	1,043	1,043	0,991
24/03/1990	nq	1,001	1,001	1,094	1,094	1,043
31/03/1990	nq	1,038	1,038	1,120	1,130	1,079
07/04/1990	nq	1,032	1,058	1,130	1,130	1,079
14/04/1990	nq	1,032	1,058	1,130	1,130	1,079
21/04/1990	nq	1,058	1,079	1,151	1,151	1,099
28/04/1990	nq	1,084	1,105	1,177	1,177	1,125
05/05/1990	nq	1,074	1,094	1,167	1,167	1,115
12/05/1990	nq	1,048	1,069	1,141	1,141	1,089
19/05/1990	nq	1,017	1,038	1,110	1,110	1,110
26/05/1990	nq	0,981	1,001	1,074	1,074	1,022
02/06/1990	nq	1,001	1,022	1,094	1,094	1,043
09/06/1990	nq	1,022	1,043	1,115	1,115	1,063
16/06/1990	nq	1,038	1,058	1,130	1,130	1,079
23/06/1990	nq	1,038	1,058	1,130	1,130	1,079
30/06/1990	nq	1,007	1,027	1,099	1,099	1,048
07/07/1990	nq	0,965	0,986	1,058	1,058	1,007
14/07/1990	nq	0,965	0,986	1,058	1,058	1,007
21/07/1990	nq	1,017	1,038	1,110	1,110	1,058
28/07/1990	nq	1,069	1,089	1,161	1,161	1,110
04/08/1990	nq	1,069	1,089	1,161	1,161	1,110
25/08/1990	nq	1,069	1,089	1,161	1,161	1,110
01/09/1990	nq	1,069	1,089	1,161	1,161	1,110
08/09/1990	nq	1,069	1,089	1,146	1,146	1,094
15/09/1990	nq	1,043	1,063	1,120	1,120	1,069
22/09/1990	nq	1,058	1,079	1,136	1,136	1,084
29/09/1990	nq	1,089	1,089	1,151	1,167	1,094
06/10/1990	nq	1,115	1,136	1,177	1,192	1,120
13/10/1990	nq	1,115	1,136	1,177	1,192	1,120
20/10/1990	nq	1,105	1,125	1,167	1,182	1,110
27/10/1990	nq	1,053	1,099	1,130	1,146	1,084
03/11/1990	nq	1,038	1,084	1,115	1,130	1,069
10/11/1990	nq	1,012	1,084	1,115	1,130	1,069
17/11/1990	nq	0,996	1,069	1,099	1,115	1,043
24/11/1990	nq	0,986	1,058	1,089	1,105	1,032
01/12/1990	nq	0,976	1,048	1,079	1,094	1,022
15/12/1990	nq	0,924	1,007	1,038	1,053	0,981
22/12/1990	nq	0,914	0,996	1,027	1,043	0,970
29/12/1990	nq	0,914	0,996	1,027	1,043	0,970
<b>MEDIA</b>	<b>nq</b>	<b>1,046</b>	<b>1,070</b>	<b>1,136</b>	<b>1,140</b>	<b>1,085</b>

**BRESCIA 1990**  
**SUINI D'ALLEVAMENTO**  
 (Euro/Kg)



**BRESCIA 1990**  
**SUINI DA MACELLO**  
 (Euro/Kg)

