



12/2016

Mercato
Mercati nazionali

5.3.26



MILANO 2016

CAMERA DI COMMERCIO DI MILANO

Categoria: SUINI VIVI

Prezzi: (Franco Partenza) Per Kg peso vivo - IVA esclusa

di Cosmino Giovanni Basile

SETTIMANE	Da 7 kg €/capo	SUINI D'ALLEVAMENTO (€/Kg)							
		< a 15	da 25	da 30	da 40	da 50	da 65	da 80	da 100
11/01/2016	46,250	3,850	2,560	2,195	1,760	1,535	1,440	1,370	1,340
18/01/2016	48,250	3,990	2,640	2,275	1,800	1,545	1,440	1,370	1,340
25/01/2016	49,750	4,090	2,730	2,370	1,840	1,545	1,440	1,370	1,340
01/02/2016	50,750	4,180	2,810	2,470	1,900	1,555	1,440	1,370	1,340
08/02/2016	51,500	4,280	2,890	2,570	1,980	1,600	1,440	1,370	1,340
15/02/2016	51,500	4,380	2,970	2,660	2,050	1,680	1,440	1,370	1,340
22/02/2016	51,750	4,460	3,060	2,760	2,130	1,750	1,460	1,370	1,340
29/02/2016	51,750	4,520	3,130	2,840	2,210	1,820	1,470	1,370	1,340
07/03/2016	51,750	4,580	3,200	2,920	2,290	1,900	1,490	1,380	1,350
14/03/2016	51,750	4,590	3,270	2,970	2,360	1,970	1,540	1,390	1,360
21/03/2016	51,750	4,590	3,320	3,000	2,420	2,040	1,600	1,400	1,370
04/04/2016	51,250	4,590	3,360	3,020	2,510	2,140	1,670	1,420	1,370
11/04/2016	50,250	4,590	3,360	3,020	2,540	2,170	1,700	1,420	1,370
18/04/2016	48,000	4,520	3,360	2,990	2,540	2,170	1,700	1,420	1,370
02/05/2016	44,000	4,200	3,200	2,800	2,490	2,130	1,700	1,420	1,370
09/05/2016	42,000	4,080	3,110	2,720	2,440	2,100	1,700	1,420	1,370
16/05/2016	40,500	3,980	3,020	2,660	2,390	2,080	1,700	1,420	1,370
23/05/2016	39,750	3,930	2,980	2,630	2,350	2,040	1,700	1,440	1,390
30/05/2016	39,750	3,910	2,940	2,610	2,310	2,020	1,700	1,470	1,420
06/06/2016	39,750	3,910	2,920	2,600	2,290	2,020	1,700	1,490	1,430
13/06/2016	39,750	3,910	2,920	2,600	2,290	2,020	1,700	1,510	1,450
20/06/2016	39,750	3,910	2,920	2,600	2,290	2,020	1,700	1,540	1,470
27/06/2016	39,750	3,910	2,920	2,600	2,290	2,020	1,700	1,560	1,480
04/07/2016	39,750	3,910	2,920	2,600	2,290	2,020	1,700	1,590	1,500
11/07/2016	39,750	3,910	2,920	2,600	2,290	2,020	1,700	1,610	1,500
18/07/2016	40,500	3,915	2,920	2,600	2,290	2,020	1,700	1,610	1,510
25/07/2016	41,000	3,940	2,920	2,600	2,290	2,020	1,700	1,620	1,530
01/08/2016	41,000	3,940	2,920	2,600	2,290	2,020	1,700	1,630	1,550
08/08/2016	41,000	3,940	2,930	2,610	2,290	2,020	1,700	1,640	1,570
29/08/2016	41,500	3,960	2,960	2,630	2,300	2,020	1,730	1,660	1,590
05/09/2016	42,000	3,990	2,980	2,650	2,320	2,020	1,730	1,660	1,590
12/09/2016	42,500	4,030	3,010	2,680	2,340	2,040	1,740	1,670	1,600
26/09/2016	42,500	4,090	3,050	2,720	2,370	2,090	1,770	1,690	1,620
03/10/2016	42,500	4,090	3,050	2,720	2,370	2,090	1,770	1,690	1,620
10/10/2016	43,000	4,090	3,050	2,720	2,370	2,090	1,770	1,690	1,620
17/10/2016	43,500	4,090	3,050	2,720	2,370	2,090	1,770	1,690	1,620
24/10/2016	43,500	4,090	3,050	2,720	2,370	2,090	1,770	1,690	1,620
07/11/2016	43,500	4,020	2,960	2,640	2,320	2,060	1,740	1,660	1,590
14/11/2016	44,000	3,960	2,890	2,580	2,270	2,030	1,720	1,640	1,540
28/11/2016	45,000	3,890	2,830	2,540	2,230	2,020	1,700	1,620	1,520
05/12/2016	45,000	3,890	2,830	2,540	2,230	2,020	1,700	1,620	1,520
19/12/2016	48,500	4,040	2,910	2,590	2,230	2,020	1,700	1,620	1,520
MEDIA	44,792	4,113	2,994	2,665	2,269	1,968	1,652	1,523	1,462

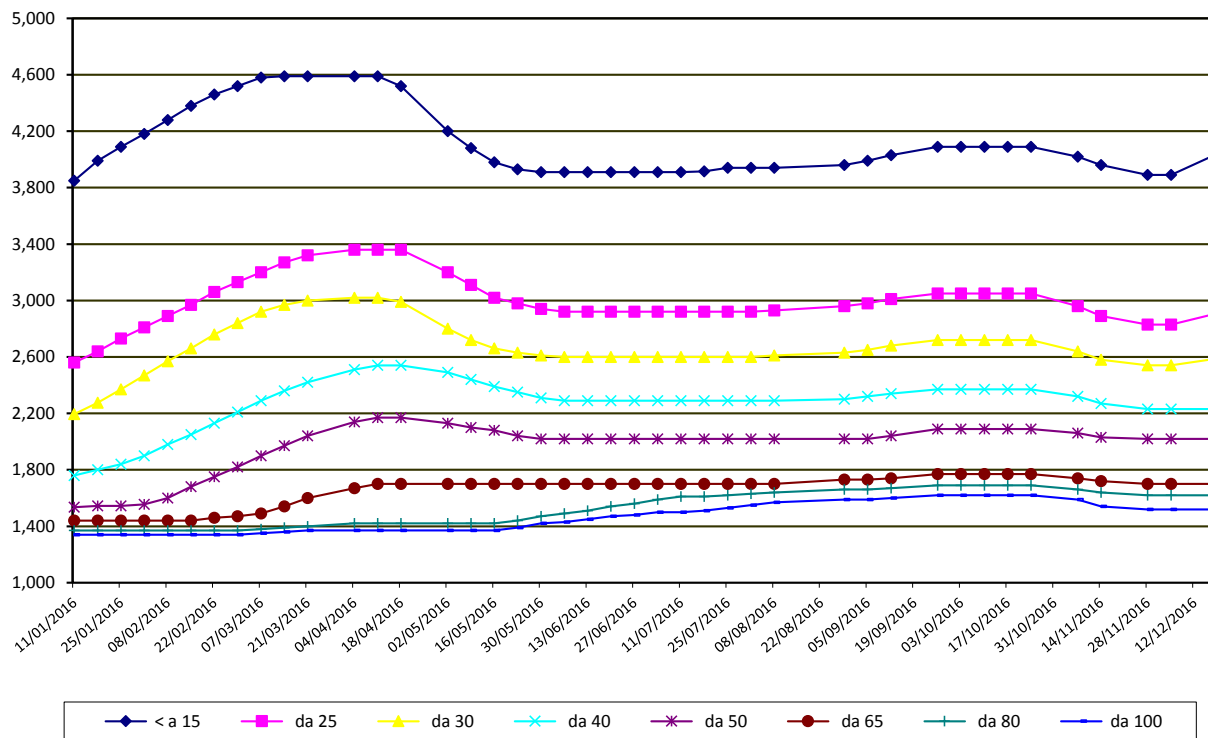
nq = non quotati

MILANO 2016

SETTIMANE	SUINI DA MACELLO (€/Kg)						
	90/115	da 115	da 130	da 144	da 156	da 176	> 176
11/01/2016	nq	nq	nq	nq	nq	nq	nq
18/01/2016	nq	nq	nq	nq	nq	nq	nq
25/01/2016	nq	nq	nq	nq	nq	nq	nq
01/02/2016	nq	nq	nq	nq	nq	nq	nq
08/02/2016	nq	nq	nq	nq	nq	nq	nq
15/02/2016	nq	nq	nq	nq	nq	nq	nq
22/02/2016	nq	nq	nq	nq	nq	nq	nq
29/02/2016	nq	nq	nq	nq	nq	nq	nq
07/03/2016	nq	nq	nq	nq	nq	nq	nq
14/03/2016	nq	nq	nq	nq	nq	nq	nq
21/03/2016	nq	nq	nq	nq	nq	nq	nq
04/04/2016	nq	nq	nq	nq	nq	nq	nq
11/04/2016	nq	nq	nq	nq	nq	nq	nq
18/04/2016	nq	nq	nq	nq	nq	nq	nq
02/05/2016	nq	nq	nq	nq	nq	nq	nq
09/05/2016	nq	nq	nq	nq	nq	nq	nq
16/05/2016	nq	nq	nq	nq	nq	nq	nq
23/05/2016	nq	nq	nq	nq	nq	nq	nq
30/05/2016	nq	nq	nq	nq	nq	nq	nq
06/06/2016	nq	nq	nq	nq	nq	nq	nq
13/06/2016	nq	nq	nq	nq	nq	nq	nq
20/06/2016	nq	nq	nq	nq	nq	nq	nq
27/06/2016	nq	nq	nq	nq	nq	nq	nq
04/07/2016	nq	nq	nq	nq	nq	nq	nq
11/07/2016	nq	nq	nq	nq	nq	nq	nq
18/07/2016	nq	nq	nq	nq	nq	nq	nq
25/07/2016	nq	nq	nq	nq	nq	nq	nq
01/08/2016	nq	nq	nq	nq	nq	nq	nq
08/08/2016	nq	nq	nq	nq	nq	nq	nq
29/08/2016	nq	nq	nq	nq	nq	nq	nq
05/09/2016	nq	nq	nq	nq	nq	nq	nq
12/09/2016	nq	nq	nq	nq	nq	nq	nq
26/09/2016	nq	nq	nq	nq	nq	nq	nq
03/10/2016	nq	nq	nq	nq	nq	nq	nq
10/10/2016	nq	nq	nq	nq	nq	nq	nq
17/10/2016	nq	nq	nq	nq	nq	nq	nq
24/10/2016	nq	nq	nq	nq	nq	nq	nq
07/11/2016	nq	nq	nq	nq	nq	nq	nq
14/11/2016	nq	nq	nq	nq	nq	nq	nq
28/11/2016	nq	nq	nq	nq	nq	nq	nq
05/12/2016	nq	nq	nq	nq	nq	nq	nq
19/12/2016	nq	nq	nq	nq	nq	nq	nq
MEDIA	nq	nq	nq	nq	nq	nq	nq

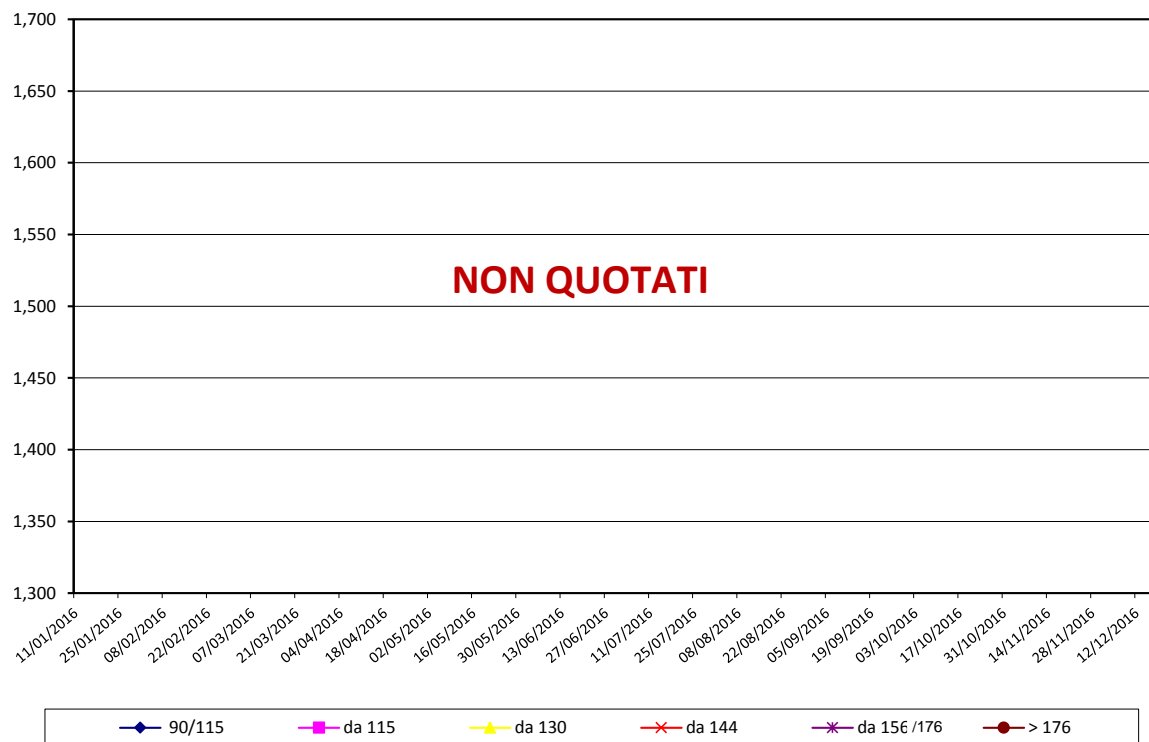
nq = non quotati

MILANO 2016
TREND SUINI D'ALLEVAMENTO
(Euro/kg)



nq = non quotati

MILANO 2016
TREND SUINI DA MACELLO
(Euro/kg)



nq = non quotati