

PERUGIA 2002

CAMERA DI COMMERCIO DI PERUGIA

Categoria: SUINI VIVI

Prezzi: (Franco Partenza) Per Kg peso vivo - IVA esclusa

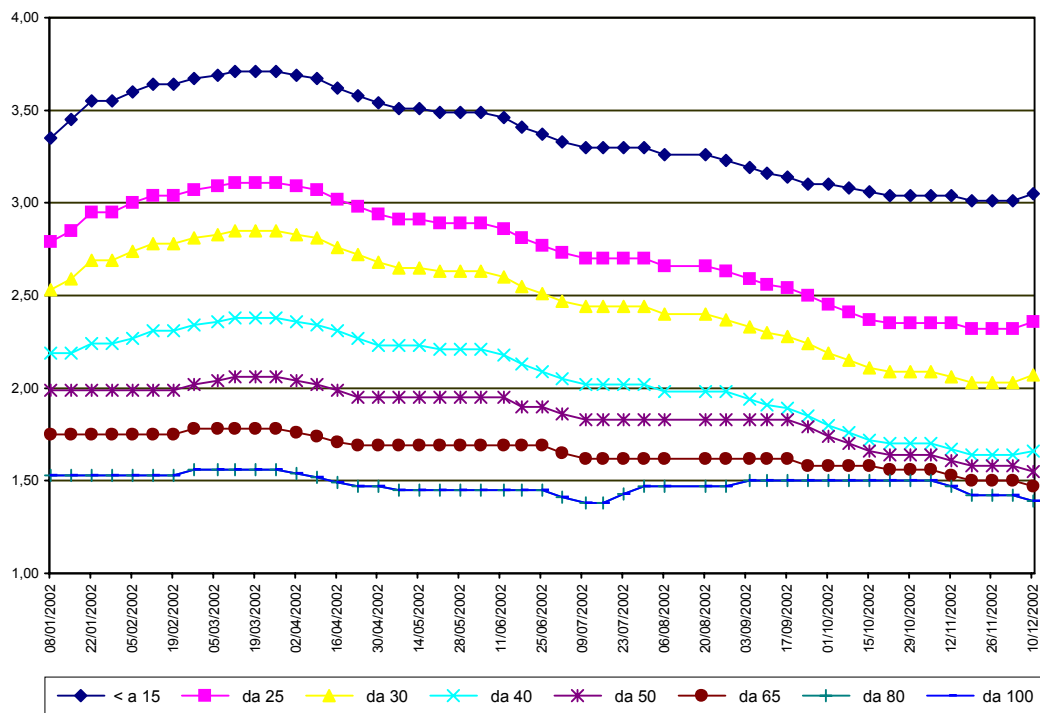
di Cosmino Giovanni Basile

SETTIMANE	SUINI D'ALLEVAMENTO (€/Kg)							
	< a 15	da 25	da 30	da 40	da 50	da 65	da 80	da 100
08/01/2002	3,35	2,79	2,53	2,19	1,99	1,75	1,53	1,53
15/01/2002	3,45	2,85	2,59	2,19	1,99	1,75	1,53	1,53
22/01/2002	3,55	2,95	2,69	2,24	1,99	1,75	1,53	1,53
29/01/2002	3,55	2,95	2,69	2,24	1,99	1,75	1,53	1,53
05/02/2002	3,60	3,00	2,74	2,27	1,99	1,75	1,53	1,53
12/02/2002	3,64	3,04	2,78	2,31	1,99	1,75	1,53	1,53
19/02/2002	3,64	3,04	2,78	2,31	1,99	1,75	1,53	1,53
26/02/2002	3,67	3,07	2,81	2,34	2,02	1,78	1,56	1,56
06/03/2002	3,69	3,09	2,83	2,36	2,04	1,78	1,56	1,56
12/03/2002	3,71	3,11	2,85	2,38	2,06	1,78	1,56	1,56
19/03/2002	3,71	3,11	2,85	2,38	2,06	1,78	1,56	1,56
26/03/2002	3,71	3,11	2,85	2,38	2,06	1,78	1,56	1,56
02/04/2002	3,69	3,09	2,83	2,36	2,04	1,76	1,54	1,54
09/04/2002	3,67	3,07	2,81	2,34	2,02	1,74	1,52	1,52
16/04/2002	3,62	3,02	2,76	2,31	1,99	1,71	1,49	1,49
23/04/2002	3,58	2,98	2,72	2,27	1,95	1,69	1,47	1,47
30/04/2002	3,54	2,94	2,68	2,23	1,95	1,69	1,47	1,47
07/05/2002	3,51	2,91	2,65	2,23	1,95	1,69	1,45	1,45
14/05/2002	3,51	2,91	2,65	2,23	1,95	1,69	1,45	1,45
21/05/2002	3,49	2,89	2,63	2,21	1,95	1,69	1,45	1,45
28/05/2002	3,49	2,89	2,63	2,21	1,95	1,69	1,45	1,45
04/06/2002	3,49	2,89	2,63	2,21	1,95	1,69	1,45	1,45
12/06/2002	3,46	2,86	2,60	2,18	1,95	1,69	1,45	1,45
18/06/2002	3,41	2,81	2,55	2,13	1,90	1,69	1,45	1,45
25/06/2002	3,37	2,77	2,51	2,09	1,90	1,69	1,45	1,45
02/07/2002	3,33	2,73	2,47	2,05	1,86	1,65	1,41	1,41
10/07/2002	3,30	2,70	2,44	2,02	1,83	1,62	1,38	1,38
16/07/2002	3,30	2,70	2,44	2,02	1,83	1,62	1,38	1,38
23/07/2002	3,30	2,70	2,44	2,02	1,83	1,62	1,43	1,43
30/07/2002	3,30	2,70	2,44	2,02	1,83	1,62	1,47	1,47
06/08/2002	3,26	2,66	2,40	1,98	1,83	1,62	1,47	1,47
20/08/2002	3,26	2,66	2,40	1,98	1,83	1,62	1,47	1,47
27/08/2002	3,23	2,63	2,37	1,98	1,83	1,62	1,47	1,47
04/09/2002	3,19	2,59	2,33	1,94	1,83	1,62	1,50	1,50
10/09/2002	3,16	2,56	2,30	1,91	1,83	1,62	1,50	1,50
17/09/2002	3,14	2,54	2,28	1,89	1,83	1,62	1,50	1,50
24/09/2002	3,10	2,50	2,24	1,85	1,79	1,58	1,50	1,50
01/10/2002	3,10	2,45	2,19	1,80	1,74	1,58	1,50	1,50
08/10/2002	3,08	2,41	2,15	1,76	1,70	1,58	1,50	1,50
15/10/2002	3,06	2,37	2,11	1,72	1,66	1,58	1,50	1,50
22/10/2002	3,04	2,35	2,09	1,70	1,64	1,56	1,50	1,50
29/10/2002	3,04	2,35	2,09	1,70	1,64	1,56	1,50	1,50
05/11/2002	3,04	2,35	2,09	1,70	1,64	1,56	1,50	1,50
12/11/2002	3,04	2,35	2,06	1,67	1,61	1,53	1,47	1,47
19/11/2002	3,01	2,32	2,03	1,64	1,58	1,50	1,42	1,42
26/11/2002	3,01	2,32	2,03	1,64	1,58	1,50	1,42	1,42
03/12/2002	3,01	2,32	2,03	1,64	1,58	1,50	1,42	1,42
10/12/2002	3,05	2,36	2,07	1,66	1,55	1,47	1,39	1,39
17/12/2002	3,08	2,39	2,10	1,68	1,57	1,47	1,39	1,39
MEDIA	3,36	2,74	2,47	2,05	1,86	1,65	1,48	1,48

PERUGIA 2002

SETTIMANE	SUINI DA MACELLO (€/Kg)							
	90/115	115/130	130/144	144/156	156/176	176/180	180/185	> 185
08/01/2002	1,380	1,220	1,240	1,270	1,310	1,260	1,170	1,100
15/01/2002	1,380	1,220	1,240	1,270	1,310	1,260	1,170	1,100
22/01/2002	1,350	1,190	1,210	1,240	1,280	1,230	1,140	1,070
29/01/2002	1,350	1,190	1,210	1,240	1,280	1,230	1,140	1,070
05/02/2002	1,300	1,140	1,160	1,190	1,230	1,180	1,090	1,020
12/02/2002	1,270	1,110	1,130	1,160	1,200	1,150	1,060	0,990
19/02/2002	1,270	1,110	1,150	1,180	1,220	1,170	1,080	0,990
26/02/2002	1,310	1,150	1,190	1,220	1,260	1,210	1,120	1,030
06/03/2002	1,330	1,170	1,210	1,240	1,280	1,230	1,140	1,050
12/03/2002	1,330	1,170	1,210	1,240	1,280	1,230	1,140	1,050
19/03/2002	1,300	1,140	1,180	1,210	1,250	1,200	1,110	1,020
26/03/2002	1,280	1,120	1,160	1,190	1,230	1,180	1,090	1,000
02/04/2002	1,260	1,100	1,140	1,170	1,210	1,160	1,070	0,980
09/04/2002	1,240	1,080	1,120	1,150	1,190	1,140	1,050	0,960
16/04/2002	1,170	1,010	1,050	1,080	1,120	1,070	0,980	0,890
23/04/2002	1,170	1,010	1,050	1,080	1,120	1,070	0,980	0,890
30/04/2002	1,170	1,010	1,050	1,080	1,120	1,070	0,980	0,890
07/05/2002	1,170	1,010	1,050	1,080	1,120	1,070	0,980	0,890
14/05/2002	1,170	1,010	1,050	1,080	1,120	1,070	0,980	0,890
21/05/2002	1,170	1,010	1,050	1,080	1,120	1,070	0,980	0,890
28/05/2002	1,170	1,010	1,050	1,080	1,120	1,070	0,980	0,890
04/06/2002	1,170	1,010	1,050	1,080	1,120	1,070	0,980	0,890
12/06/2002	1,200	1,010	1,050	1,080	1,120	1,070	0,980	0,890
18/06/2002	1,230	1,040	1,080	1,110	1,150	1,100	1,010	0,920
25/06/2002	1,260	1,070	1,110	1,140	1,180	1,130	1,040	0,950
02/07/2002	1,260	1,070	1,110	1,140	1,180	1,130	1,040	0,950
10/07/2002	1,230	1,040	1,080	1,110	1,150	1,100	1,010	0,920
16/07/2002	1,330	1,140	1,180	1,210	1,250	1,200	1,110	1,020
23/07/2002	1,480	1,290	1,330	1,360	1,400	1,350	1,260	1,170
30/07/2002	1,580	1,390	1,430	1,460	1,500	1,450	1,360	1,270
06/08/2002	1,580	1,390	1,430	1,460	1,500	1,450	1,360	1,270
20/08/2002	1,580	1,390	1,430	1,460	1,500	1,450	1,360	1,270
27/08/2002	1,580	1,390	1,430	1,460	1,500	1,450	1,360	1,270
04/09/2002	1,600	1,440	1,480	1,510	1,550	1,500	1,410	1,320
10/09/2002	1,600	1,440	1,480	1,510	1,550	1,500	1,410	1,320
17/09/2002	1,570	1,440	1,480	1,510	1,550	1,500	1,410	1,320
24/09/2002	1,540	1,410	1,450	1,480	1,520	1,470	1,380	1,290
01/10/2002	1,490	1,360	1,400	1,430	1,470	1,420	1,330	1,240
08/10/2002	1,530	1,400	1,440	1,470	1,510	1,460	1,370	1,280
15/10/2002	1,550	1,450	1,490	1,520	1,560	1,510	1,420	1,330
22/10/2002	1,570	1,500	1,540	1,570	1,610	1,560	1,470	1,380
29/10/2002	1,570	1,500	1,540	1,570	1,610	1,560	1,470	1,380
05/11/2002	1,520	1,450	1,490	1,520	1,560	1,510	1,420	1,330
12/11/2002	1,480	1,410	1,450	1,480	1,520	1,470	1,380	1,290
19/11/2002	1,430	1,390	1,430	1,460	1,500	1,450	1,360	1,270
26/11/2002	1,430	1,390	1,430	1,460	1,500	1,450	1,360	1,270
03/12/2002	1,430	1,370	1,410	1,440	1,480	1,430	1,340	1,250
10/12/2002	1,380	1,320	1,360	1,390	1,430	1,380	1,290	1,200
17/12/2002	1,360	1,300	1,340	1,370	1,410	1,360	1,270	1,180
MEDIA	1,369	1,224	1,262	1,292	1,332	1,282	1,192	1,104

PERUGIA 2002
SUINI D'ALLEVAMENTO
 (Euro/Kg)



PERUGIA 2002
SUINI DA MACELLO
 (Euro/Kg)

