

REGGIO EMILIA 2001

CAMERA DI COMMERCIO DI REGGIO EMILIA

Categoria: SUINI VIVI

Prezzi: (Franco Partenza) Per Kg peso vivo - IVA esclusa

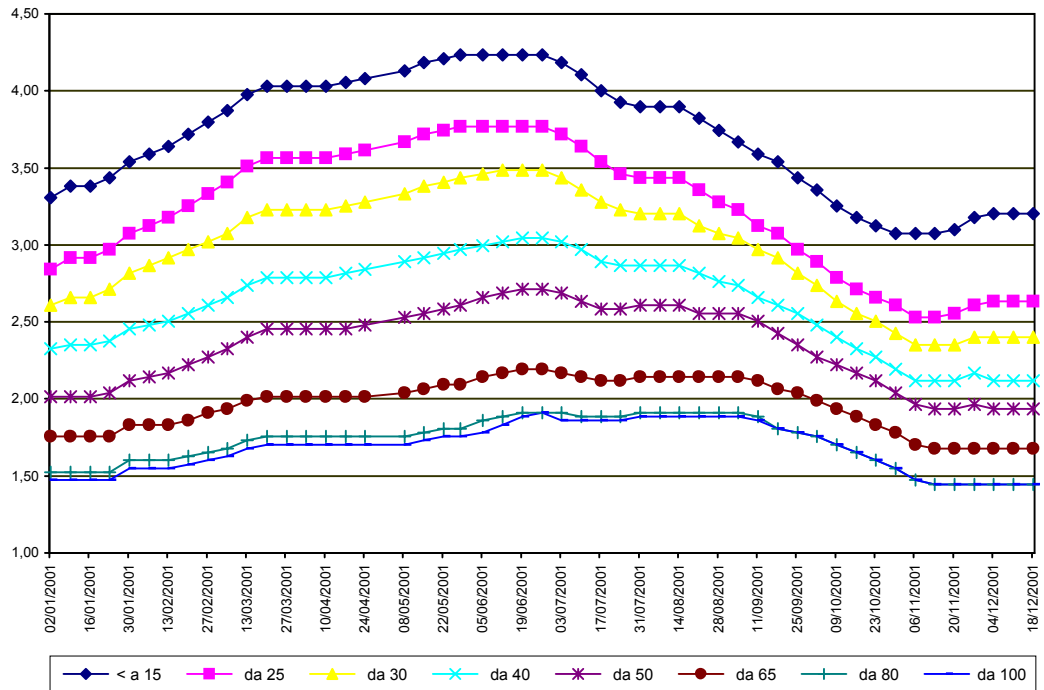
di Cosmino Giovanni Basile

SETTIMANE	SUINI D'ALLEVAMENTO (€/Kg)							
	< a 15	da 25	da 30	da 40	da 50	da 65	da 80	da 100
02/01/2001	3,31	2,84	2,61	2,32	2,01	1,76	1,52	1,47
09/01/2001	3,38	2,92	2,66	2,35	2,01	1,76	1,52	1,47
16/01/2001	3,38	2,92	2,66	2,35	2,01	1,76	1,52	1,47
23/01/2001	3,43	2,97	2,71	2,38	2,04	1,76	1,52	1,47
30/01/2001	3,54	3,07	2,81	2,45	2,12	1,83	1,60	1,55
06/02/2001	3,59	3,12	2,87	2,48	2,14	1,83	1,60	1,55
13/02/2001	3,64	3,18	2,92	2,50	2,17	1,83	1,60	1,55
20/02/2001	3,72	3,25	2,97	2,56	2,22	1,86	1,63	1,58
27/02/2001	3,80	3,33	3,02	2,61	2,27	1,91	1,65	1,60
06/03/2001	3,87	3,41	3,07	2,66	2,32	1,94	1,68	1,63
13/03/2001	3,98	3,51	3,18	2,74	2,40	1,99	1,73	1,68
20/03/2001	4,03	3,56	3,23	2,79	2,45	2,01	1,76	1,70
27/03/2001	4,03	3,56	3,23	2,79	2,45	2,01	1,76	1,70
03/04/2001	4,03	3,56	3,23	2,79	2,45	2,01	1,76	1,70
10/04/2001	4,03	3,56	3,23	2,79	2,45	2,01	1,76	1,70
17/04/2001	4,05	3,59	3,25	2,81	2,45	2,01	1,76	1,70
24/04/2001	4,08	3,62	3,28	2,84	2,48	2,01	1,76	1,70
08/05/2001	4,13	3,67	3,33	2,89	2,53	2,04	1,76	1,70
15/05/2001	4,18	3,72	3,38	2,92	2,56	2,07	1,78	1,73
22/05/2001	4,21	3,74	3,41	2,94	2,58	2,09	1,81	1,76
28/05/2001	4,23	3,77	3,43	2,97	2,61	2,09	1,81	1,76
05/06/2001	4,23	3,77	3,46	3,00	2,66	2,14	1,86	1,78
12/06/2001	4,23	3,77	3,49	3,02	2,69	2,17	1,89	1,83
19/06/2001	4,23	3,77	3,49	3,05	2,71	2,19	1,91	1,89
26/06/2001	4,23	3,77	3,49	3,05	2,71	2,19	1,91	1,91
03/07/2001	4,18	3,72	3,43	3,02	2,69	2,17	1,91	1,86
10/07/2001	4,11	3,64	3,36	2,97	2,63	2,14	1,89	1,86
17/07/2001	4,00	3,54	3,28	2,89	2,58	2,12	1,89	1,86
24/07/2001	3,93	3,46	3,23	2,87	2,58	2,12	1,89	1,86
31/07/2001	3,90	3,43	3,20	2,87	2,61	2,14	1,91	1,89
07/08/2001	3,90	3,43	3,20	2,87	2,61	2,14	1,91	1,89
14/08/2001	3,90	3,43	3,20	2,87	2,61	2,14	1,91	1,89
21/08/2001	3,82	3,36	3,12	2,81	2,56	2,14	1,91	1,89
28/08/2001	3,74	3,28	3,07	2,76	2,56	2,14	1,91	1,89
04/09/2001	3,67	3,23	3,05	2,74	2,56	2,14	1,91	1,89
11/09/2001	3,59	3,12	2,97	2,66	2,50	2,12	1,89	1,86
18/09/2001	3,54	3,07	2,92	2,61	2,43	2,07	1,81	1,81
25/09/2001	3,43	2,97	2,81	2,56	2,35	2,04	1,78	1,78
02/10/2001	3,36	2,89	2,74	2,48	2,27	1,99	1,76	1,76
09/10/2001	3,25	2,79	2,63	2,40	2,22	1,94	1,70	1,70
16/10/2001	3,18	2,71	2,56	2,32	2,17	1,89	1,65	1,65
23/10/2001	3,12	2,66	2,50	2,27	2,12	1,83	1,60	1,60
30/10/2001	3,07	2,61	2,43	2,19	2,04	1,78	1,55	1,55
06/11/2001	3,07	2,53	2,35	2,12	1,96	1,70	1,47	1,47
13/11/2001	3,07	2,53	2,35	2,12	1,94	1,68	1,45	1,45
20/11/2001	3,10	2,56	2,35	2,12	1,94	1,68	1,45	1,45
27/11/2001	3,18	2,61	2,40	2,17	1,96	1,68	1,45	1,45
04/12/2001	3,20	2,63	2,40	2,12	1,94	1,68	1,45	1,45
11/12/2001	3,20	2,63	2,40	2,12	1,94	1,68	1,45	1,45
18/12/2001	3,20	2,63	2,40	2,12	1,94	1,68	1,45	1,45
MEDIA	3,71	3,23	2,98	2,62	2,34	1,96	1,72	1,68

REGGIO EMILIA 2001

SETTIMANE	SUINI DA MACELLO (€/Kg)							
	90/115	115/130	130/144	144/156	156/176	176/180	180/185	> 185
02/01/2001	1,549	1,451	1,503	1,539	1,549	1,524	1,446	1,358
09/01/2001	1,529	1,431	1,482	1,518	1,529	1,503	1,425	1,338
16/01/2001	1,477	1,379	1,431	1,467	1,477	1,451	1,374	1,286
23/01/2001	1,493	1,394	1,446	1,482	1,493	1,467	1,389	1,301
30/01/2001	1,565	1,467	1,518	1,555	1,565	1,539	1,462	1,374
06/02/2001	1,560	1,462	1,513	1,549	1,560	1,534	1,456	1,369
13/02/2001	1,555	1,456	1,508	1,544	1,555	1,529	1,451	1,363
20/02/2001	1,601	1,493	1,544	1,580	1,586	1,565	1,487	1,400
27/02/2001	1,653	1,518	1,570	1,606	1,617	1,591	1,513	1,425
06/03/2001	1,704	1,555	1,606	1,642	1,653	1,627	1,549	1,462
13/03/2001	1,761	1,611	1,663	1,699	1,709	1,684	1,606	1,518
20/03/2001	1,761	1,611	1,663	1,699	1,709	1,684	1,606	1,518
27/03/2001	1,704	1,555	1,606	1,642	1,653	1,627	1,549	1,462
03/04/2001	1,632	1,482	1,534	1,570	1,580	1,555	1,477	1,389
10/04/2001	1,632	1,472	1,524	1,560	1,570	1,544	1,467	1,379
17/04/2001	1,632	1,477	1,529	1,565	1,575	1,549	1,472	1,384
24/04/2001	1,632	1,477	1,529	1,565	1,575	1,549	1,472	1,384
08/05/2001	1,606	1,451	1,503	1,539	1,549	1,524	1,446	1,358
15/05/2001	1,606	1,425	1,477	1,513	1,524	1,498	1,420	1,332
22/05/2001	1,580	1,400	1,451	1,487	1,498	1,472	1,394	1,307
28/05/2001	1,570	1,389	1,441	1,477	1,487	1,462	1,384	1,296
05/06/2001	1,575	1,394	1,446	1,482	1,493	1,467	1,389	1,301
12/06/2001	1,637	1,456	1,508	1,544	1,555	1,529	1,451	1,363
19/06/2001	1,709	1,529	1,580	1,617	1,627	1,601	1,524	1,436
26/06/2001	1,684	1,518	1,570	1,606	1,617	1,591	1,513	1,425
03/07/2001	1,601	1,451	1,503	1,539	1,549	1,524	1,446	1,358
10/07/2001	1,498	1,374	1,425	1,462	1,472	1,446	1,369	1,281
17/07/2001	1,498	1,389	1,441	1,477	1,487	1,462	1,384	1,296
24/07/2001	1,586	1,477	1,529	1,565	1,575	1,549	1,472	1,384
31/07/2001	1,658	1,549	1,601	1,637	1,647	1,622	1,544	1,456
07/08/2001	1,658	1,549	1,601	1,637	1,647	1,622	1,544	1,456
14/08/2001	1,658	1,549	1,601	1,637	1,647	1,622	1,544	1,456
21/08/2001	1,647	1,539	1,591	1,627	1,637	1,611	1,534	1,446
28/08/2001	1,642	1,534	1,586	1,622	1,632	1,606	1,529	1,441
04/09/2001	1,658	1,549	1,601	1,637	1,647	1,622	1,544	1,456
11/09/2001	1,658	1,549	1,601	1,637	1,647	1,622	1,544	1,456
18/09/2001	1,642	1,534	1,586	1,622	1,632	1,606	1,529	1,441
25/09/2001	1,627	1,518	1,570	1,606	1,617	1,591	1,513	1,425
02/10/2001	1,606	1,498	1,549	1,586	1,596	1,570	1,493	1,405
09/10/2001	1,539	1,431	1,482	1,518	1,529	1,503	1,425	1,338
16/10/2001	1,487	1,379	1,431	1,467	1,477	1,451	1,374	1,286
23/10/2001	1,446	1,338	1,389	1,425	1,436	1,410	1,332	1,245
30/10/2001	1,394	1,296	1,348	1,384	1,394	1,369	1,291	1,203
06/11/2001	1,348	1,250	1,301	1,338	1,348	1,322	1,245	1,157
13/11/2001	1,348	1,250	1,301	1,338	1,348	1,322	1,245	1,157
20/11/2001	1,389	1,291	1,343	1,379	1,389	1,363	1,286	1,198
27/11/2001	1,394	1,296	1,348	1,384	1,394	1,369	1,291	1,203
04/12/2001	1,322	1,224	1,276	1,312	1,322	1,296	1,219	1,131
11/12/2001	1,291	1,193	1,245	1,281	1,291	1,265	1,188	1,100
18/12/2001	1,286	1,188	1,239	1,276	1,286	1,260	1,183	1,095
MEDIA	1,566	1,441	1,493	1,529	1,539	1,513	1,436	1,348

REGGIO EMILIA 2001 SUINI D'ALLEVAMENTO (Euro/Kg)



REGGIO EMILIA 2001
SUINI DA MACELLO
 (Euro/Kg)

