

MILANO 2003

CAMERA DI COMMERCIO DI MILANO

Categoria: SUINI VIVI

Prezzi: (Franco Partenza) Per Kg peso vivo - IVA esclusa

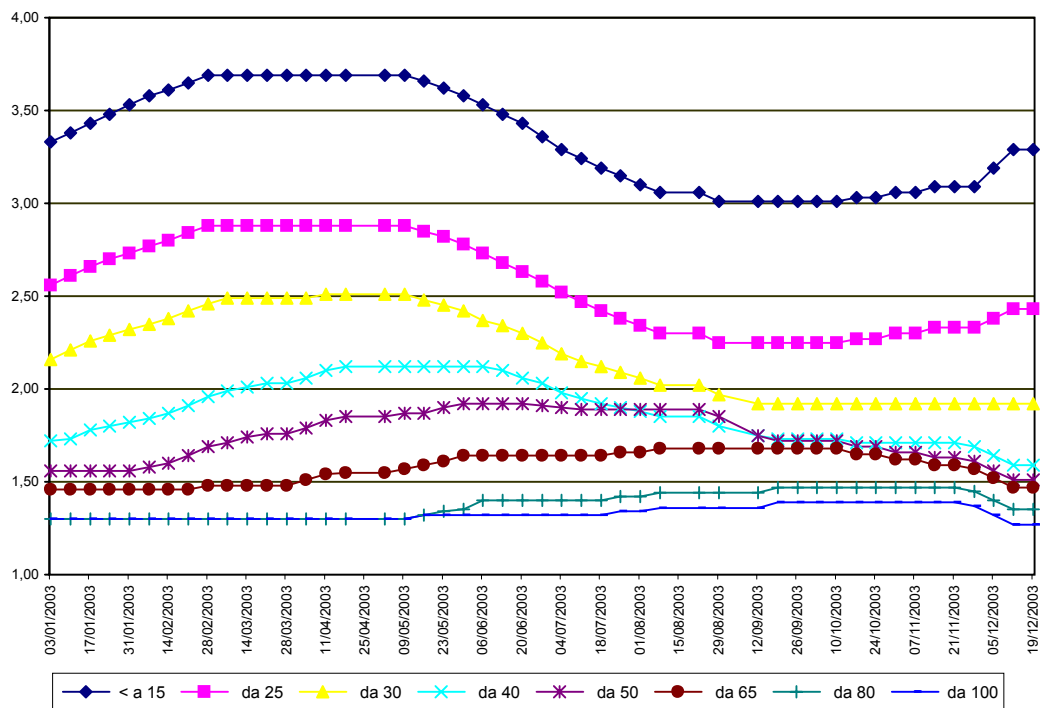
di Cosmino Giovanni Basile

SETTIMANE	SUINI D'ALLEVAMENTO (€/Kg)							
	< a 15	da 25	da 30	da 40	da 50	da 65	da 80	da 100
03/01/2003	3,33	2,56	2,16	1,72	1,56	1,46	1,30	1,30
10/01/2003	3,38	2,61	2,21	1,73	1,56	1,46	1,30	1,30
17/01/2003	3,43	2,66	2,26	1,78	1,56	1,46	1,30	1,30
24/01/2003	3,48	2,70	2,29	1,80	1,56	1,46	1,30	1,30
31/01/2003	3,53	2,73	2,32	1,82	1,56	1,46	1,30	1,30
07/02/2003	3,58	2,77	2,35	1,84	1,58	1,46	1,30	1,30
14/02/2003	3,61	2,80	2,38	1,87	1,60	1,46	1,30	1,30
21/02/2003	3,65	2,84	2,42	1,91	1,64	1,46	1,30	1,30
28/02/2003	3,69	2,88	2,46	1,96	1,69	1,48	1,30	1,30
07/03/2003	3,69	2,88	2,49	1,99	1,71	1,48	1,30	1,30
14/03/2003	3,69	2,88	2,49	2,01	1,74	1,48	1,30	1,30
21/03/2003	3,69	2,88	2,49	2,03	1,76	1,48	1,30	1,30
28/03/2003	3,69	2,88	2,49	2,03	1,76	1,48	1,30	1,30
04/04/2003	3,69	2,88	2,49	2,06	1,79	1,51	1,30	1,30
11/04/2003	3,69	2,88	2,51	2,10	1,83	1,54	1,30	1,30
18/04/2003	3,69	2,88	2,51	2,12	1,85	1,55	1,30	1,30
02/05/2003	3,69	2,88	2,51	2,12	1,85	1,55	1,30	1,30
09/05/2003	3,69	2,88	2,51	2,12	1,87	1,57	1,30	1,30
16/05/2003	3,66	2,85	2,48	2,12	1,87	1,59	1,32	1,32
23/05/2003	3,62	2,82	2,45	2,12	1,90	1,61	1,34	1,32
30/05/2003	3,58	2,78	2,42	2,12	1,92	1,64	1,35	1,32
06/06/2003	3,53	2,73	2,37	2,12	1,92	1,64	1,40	1,32
13/06/2003	3,48	2,68	2,34	2,10	1,92	1,64	1,40	1,32
20/06/2003	3,43	2,63	2,30	2,06	1,92	1,64	1,40	1,32
27/06/2003	3,36	2,58	2,25	2,03	1,91	1,64	1,40	1,32
04/07/2003	3,29	2,52	2,19	1,98	1,90	1,64	1,40	1,32
11/07/2003	3,24	2,47	2,15	1,95	1,89	1,64	1,40	1,32
18/07/2003	3,19	2,42	2,12	1,92	1,89	1,64	1,40	1,32
25/07/2003	3,15	2,38	2,09	1,90	1,89	1,66	1,42	1,34
01/08/2003	3,10	2,34	2,06	1,88	1,89	1,66	1,42	1,34
08/08/2003	3,06	2,30	2,02	1,85	1,89	1,68	1,44	1,36
22/08/2003	3,06	2,30	2,02	1,85	1,89	1,68	1,44	1,36
29/08/2003	3,01	2,25	1,97	1,80	1,85	1,68	1,44	1,36
12/09/2003	3,01	2,25	1,92	1,75	1,75	1,68	1,44	1,36
19/09/2003	3,01	2,25	1,92	1,73	1,72	1,68	1,47	1,39
26/09/2003	3,01	2,25	1,92	1,73	1,72	1,68	1,47	1,39
03/10/2003	3,01	2,25	1,92	1,73	1,72	1,68	1,47	1,39
10/10/2003	3,01	2,25	1,92	1,73	1,72	1,68	1,47	1,39
17/10/2003	3,03	2,27	1,92	1,71	1,69	1,65	1,47	1,39
24/10/2003	3,03	2,27	1,92	1,71	1,69	1,65	1,47	1,39
31/10/2003	3,06	2,30	1,92	1,71	1,66	1,62	1,47	1,39
07/11/2003	3,06	2,30	1,92	1,71	1,66	1,62	1,47	1,39
14/11/2003	3,09	2,33	1,92	1,71	1,63	1,59	1,47	1,39
21/11/2003	3,09	2,33	1,92	1,71	1,63	1,59	1,47	1,39
28/11/2003	3,09	2,33	1,92	1,69	1,61	1,57	1,45	1,37
05/12/2003	3,19	2,38	1,92	1,64	1,56	1,52	1,40	1,32
12/12/2003	3,29	2,43	1,92	1,59	1,51	1,47	1,35	1,27
19/12/2003	3,29	2,43	1,92	1,59	1,51	1,47	1,35	1,27
MEDIA	3,35	2,57	2,20	1,88	1,74	1,58	1,38	1,33

MILANO 2003

SETTIMANE	SUINI DA MACELLO (€/Kg)						
	90/115	da 115	da 130	da 144	da 156	da 176	> 176
03/01/2003	1,270	1,190	1,210	1,280	1,310	1,310	1,200
10/01/2003	1,270	1,200	1,220	1,290	1,320	1,320	1,210
17/01/2003	1,270	1,190	1,210	1,280	1,310	1,310	1,200
24/01/2003	1,240	1,160	1,180	1,250	1,280	1,280	1,170
31/01/2003	1,190	1,110	1,130	1,200	1,230	1,230	1,120
07/02/2003	1,140	1,060	1,080	1,150	1,200	1,200	1,090
14/02/2003	1,130	1,050	1,070	1,140	1,190	1,190	1,080
21/02/2003	1,140	1,060	1,080	1,150	1,200	1,200	1,090
28/02/2003	1,150	1,070	1,090	1,160	1,210	1,210	1,100
07/03/2003	1,120	1,040	1,060	1,130	1,180	1,180	1,070
14/03/2003	1,110	1,030	1,050	1,120	1,170	1,170	1,060
21/03/2003	1,100	1,020	1,040	1,110	1,160	1,160	1,050
28/03/2003	1,100	1,020	1,040	1,110	1,160	1,160	1,050
04/04/2003	1,100	0,990	1,010	1,080	1,130	1,130	1,020
11/04/2003	1,100	0,990	1,010	1,080	1,130	1,130	1,020
18/04/2003	1,100	0,990	1,010	1,080	1,130	1,130	1,020
02/05/2003	1,100	0,980	1,000	1,070	1,120	1,120	1,010
09/05/2003	1,080	0,960	0,980	1,050	1,100	1,100	0,990
16/05/2003	1,050	0,930	0,950	1,020	1,070	1,070	0,960
23/05/2003	1,050	0,920	0,940	1,010	1,060	1,060	0,950
30/05/2003	1,050	0,900	0,920	0,990	1,040	1,040	0,930
06/06/2003	1,050	0,900	0,920	0,990	1,040	1,040	0,930
13/06/2003	1,050	0,900	0,920	0,990	1,040	1,040	0,930
27/06/2003	1,080	0,930	0,950	1,020	1,070	1,070	0,960
04/07/2003	1,140	0,990	1,010	1,080	1,130	1,130	1,020
11/07/2003	1,290	1,140	1,160	1,230	1,280	1,280	1,170
18/07/2003	1,400	1,250	1,270	1,340	1,390	1,390	1,280
25/07/2003	1,400	1,250	1,270	1,340	1,390	1,390	1,280
01/08/2003	1,360	1,210	1,230	1,300	1,350	1,350	1,240
08/08/2003	1,350	1,200	1,220	1,290	1,340	1,340	1,230
22/08/2003	1,350	1,220	1,240	1,310	1,360	1,360	1,250
29/08/2003	1,430	1,300	1,320	1,390	1,440	1,440	1,330
12/09/2003	1,515	1,385	1,405	1,475	1,525	1,525	1,415
19/09/2003	1,525	1,395	1,415	1,485	1,535	1,535	1,425
26/09/2003	1,525	1,390	1,410	1,480	1,530	1,530	1,420
03/10/2003	1,450	1,315	1,335	1,405	1,455	1,455	1,345
10/10/2003	1,400	1,265	1,285	1,355	1,405	1,405	1,295
17/10/2003	1,365	1,230	1,250	1,320	1,370	1,370	1,260
24/10/2003	1,365	1,230	1,250	1,320	1,370	1,370	1,260
31/10/2003	1,365	1,230	1,250	1,320	1,370	1,370	1,260
07/11/2003	1,355	1,220	1,240	1,310	1,360	1,360	1,250
14/11/2003	1,295	1,160	1,180	1,250	1,300	1,300	1,190
21/11/2003	1,265	1,130	1,150	1,220	1,270	1,270	1,160
28/11/2003	1,195	1,065	1,085	1,155	1,225	1,225	1,115
05/12/2003	1,170	1,040	1,060	1,130	1,200	1,200	1,090
12/12/2003	1,110	0,980	1,000	1,070	1,140	1,140	1,030
19/12/2003	1,110	0,980	1,000	1,070	1,140	1,140	1,030
MEDIA	1,229	1,110	1,130	1,200	1,249	1,249	1,139

MILANO 2003
SUINI D'ALLEVAMENTO
 (Euro/Kg)



MILANO 2003
SUINI DA MACELLO
 (Euro/Kg)

