

REGGIO EMILIA 2012

CAMERA DI COMMERCIO DI REGGIO EMILIA

Categoria: SUINI VIVI

Prezzi: (Franco Partenza) Per Kg peso vivo - IVA esclusa

di Cosmino Giovanni Basile

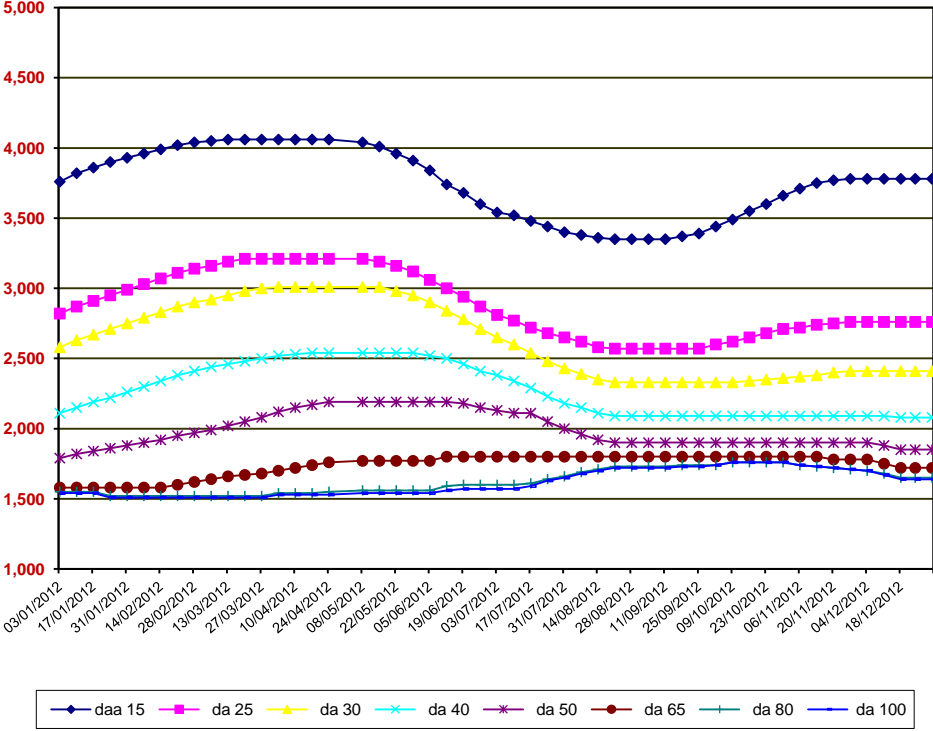
SETTIMANE	SUINI D'ALLEVAMENTO (€/Kg)								
	da 6	daa 15	da 25	da 30	da 40	da 50	da 65	da 80	da 100
03/01/2012	7,195	3,760	2,820	2,580	2,110	1,790	1,580	1,550	1,540
10/01/2012	7,350	3,820	2,870	2,630	2,150	1,820	1,580	1,550	1,540
17/01/2012	7,450	3,860	2,910	2,670	2,190	1,840	1,580	1,550	1,540
24/01/2012	7,500	3,900	2,950	2,710	2,220	1,860	1,580	1,520	1,510
31/01/2012	7,500	3,930	2,990	2,750	2,260	1,880	1,580	1,520	1,510
07/02/2012	7,500	3,960	3,030	2,790	2,300	1,900	1,580	1,520	1,510
14/02/2012	7,500	3,990	3,070	2,830	2,340	1,920	1,580	1,520	1,510
21/02/2012	7,500	4,020	3,110	2,870	2,380	1,950	1,600	1,520	1,510
28/02/2012	7,520	4,040	3,140	2,900	2,410	1,970	1,620	1,520	1,510
06/03/2012	7,520	4,050	3,160	2,920	2,440	1,990	1,640	1,520	1,510
13/03/2012	7,520	4,060	3,190	2,950	2,460	2,020	1,660	1,520	1,510
20/03/2012	7,520	4,060	3,210	2,980	2,480	2,050	1,670	1,520	1,510
27/03/2012	7,520	4,060	3,210	3,000	2,500	2,080	1,680	1,520	1,510
03/04/2012	7,520	4,060	3,210	3,010	2,520	2,120	1,700	1,540	1,530
10/04/2012	7,520	4,060	3,210	3,010	2,530	2,150	1,720	1,540	1,530
17/04/2012	7,520	4,060	3,210	3,010	2,540	2,170	1,740	1,540	1,530
24/04/2012	7,520	4,060	3,210	3,010	2,540	2,190	1,760	1,550	1,530
08/05/2012	7,470	4,040	3,210	3,010	2,540	2,190	1,770	1,560	1,540
15/05/2012	7,370	4,010	3,190	3,010	2,540	2,190	1,770	1,560	1,540
22/05/2012	7,270	3,960	3,160	2,980	2,540	2,190	1,770	1,560	1,540
29/05/2012	7,120	3,910	3,120	2,950	2,540	2,190	1,770	1,560	1,540
05/06/2012	7,000	3,840	3,060	2,900	2,520	2,190	1,770	1,560	1,540
12/06/2012	6,820	3,740	3,000	2,840	2,500	2,190	1,800	1,590	1,560
19/06/2012	6,720	3,680	2,940	2,780	2,460	2,180	1,800	1,600	1,570
26/06/2012	6,620	3,600	2,870	2,710	2,410	2,150	1,800	1,600	1,570
03/07/2012	6,520	3,540	2,810	2,650	2,380	2,130	1,800	1,600	1,570
10/07/2012	6,520	3,520	2,770	2,600	2,340	2,110	1,800	1,600	1,570
17/07/2012	6,480	3,480	2,720	2,540	2,290	2,110	1,800	1,610	1,590
24/07/2012	6,440	3,440	2,680	2,480	2,230	2,050	1,800	1,640	1,630
31/07/2012	6,400	3,400	2,650	2,430	2,180	2,000	1,800	1,660	1,650
07/08/2012	6,370	3,380	2,620	2,390	2,150	1,960	1,800	1,690	1,680
14/08/2012	6,350	3,360	2,580	2,350	2,110	1,920	1,800	1,710	1,700
21/08/2012	6,350	3,350	2,570	2,330	2,090	1,900	1,800	1,730	1,720
28/08/2012	6,350	3,350	2,570	2,330	2,090	1,900	1,800	1,730	1,720
04/09/2012	6,400	3,350	2,570	2,330	2,090	1,900	1,800	1,730	1,720
11/09/2012	6,400	3,350	2,570	2,330	2,090	1,900	1,800	1,730	1,720
18/09/2012	6,500	3,370	2,570	2,330	2,090	1,900	1,800	1,740	1,730
25/09/2012	6,650	3,390	2,570	2,330	2,090	1,900	1,800	1,740	1,730
02/10/2012	6,850	3,440	2,600	2,330	2,090	1,900	1,800	1,740	1,740
09/10/2012	7,100	3,490	2,620	2,330	2,090	1,900	1,800	1,760	1,760
16/10/2012	7,300	3,550	2,650	2,340	2,090	1,900	1,800	1,760	1,760
23/10/2012	7,500	3,600	2,680	2,350	2,090	1,900	1,800	1,760	1,760
30/10/2012	7,700	3,660	2,710	2,360	2,090	1,900	1,800	1,760	1,760
06/11/2012	7,900	3,710	2,720	2,370	2,090	1,900	1,800	1,740	1,740
13/11/2012	8,020	3,750	2,740	2,380	2,090	1,900	1,800	1,730	1,730
20/11/2012	8,100	3,770	2,750	2,400	2,090	1,900	1,780	1,720	1,720
27/11/2012	8,150	3,780	2,760	2,410	2,090	1,900	1,780	1,710	1,710
04/12/2012	8,150	3,780	2,760	2,410	2,090	1,900	1,780	1,700	1,700
11/12/2012	8,150	3,780	2,760	2,410	2,090	1,880	1,750	1,680	1,670
18/12/2012	8,150	3,780	2,760	2,410	2,080	1,850	1,720	1,650	1,640
24/12/2012	8,150	3,780	2,760	2,410	2,080	1,850	1,720	1,650	1,640
31/12/2012	8,150	3,780	2,760	2,410	2,080	1,850	1,720	1,650	1,640
MEDIA	7,243	3,740	2,872	2,626	2,267	1,986	1,738	1,626	1,614

REGGIO EMILIA 2012

SETTIMANE	SUINI DA MACELLO (€/Kg)							
	90/115	115/130	130/144	144/156	156/176	176/180	180/185	> 185
03/01/2012	1,430	1,330	1,365	1,380	1,440	1,440	1,410	1,385
10/01/2012	1,390	1,290	1,325	1,340	1,400	1,400	1,370	1,345
17/01/2012	1,330	1,230	1,265	1,280	1,340	1,340	1,310	1,285
24/01/2012	1,290	1,190	1,225	1,240	1,300	1,300	1,270	1,245
31/01/2012	1,300	1,200	1,235	1,250	1,310	1,310	1,280	1,255
07/02/2012	1,305	1,205	1,240	1,255	1,315	1,315	1,285	1,260
14/02/2012	1,330	1,230	1,265	1,280	1,340	1,340	1,310	1,285
21/02/2012	1,365	1,265	1,300	1,315	1,375	1,375	1,345	1,320
28/02/2012	1,370	1,270	1,305	1,320	1,380	1,380	1,350	1,325
06/03/2012	1,370	1,270	1,305	1,320	1,380	1,380	1,350	1,325
13/03/2012	1,370	1,270	1,305	1,320	1,380	1,380	1,350	1,325
20/03/2012	1,370	1,270	1,305	1,320	1,380	1,380	1,350	1,325
27/03/2012	1,372	1,272	1,307	1,322	1,382	1,382	1,352	1,327
03/04/2012	1,372	1,272	1,307	1,322	1,382	1,382	1,352	1,327
10/04/2012	1,363	1,263	1,298	1,313	1,373	1,373	1,343	1,318
17/04/2012	1,350	1,230	1,265	1,280	1,340	1,340	1,310	1,285
24/04/2012	1,340	1,220	1,255	1,270	1,330	1,330	1,300	1,275
08/05/2012	1,305	1,185	1,220	1,235	1,295	1,295	1,265	1,240
15/05/2012	1,283	1,163	1,198	1,213	1,273	1,273	1,243	1,218
22/05/2012	1,270	1,150	1,185	1,200	1,260	1,260	1,230	1,205
29/05/2012	1,280	1,160	1,195	1,210	1,270	1,270	1,240	1,215
05/06/2012	1,295	1,175	1,210	1,225	1,285	1,285	1,255	1,230
12/06/2012	1,330	1,210	1,245	1,260	1,320	1,320	1,290	1,265
19/06/2012	1,385	1,265	1,300	1,315	1,375	1,375	1,345	1,320
26/06/2012	1,430	1,310	1,345	1,360	1,420	1,420	1,390	1,365
03/07/2012	1,445	1,325	1,360	1,375	1,435	1,435	1,405	1,380
10/07/2012	1,465	1,345	1,380	1,395	1,455	1,455	1,425	1,400
17/07/2012	1,520	1,400	1,435	1,450	1,510	1,510	1,480	1,455
24/07/2012	1,550	1,430	1,465	1,480	1,540	1,540	1,510	1,485
31/07/2012	1,610	1,490	1,525	1,540	1,600	1,600	1,570	1,545
07/08/2012	1,660	1,540	1,575	1,590	1,650	1,650	1,620	1,595
14/08/2012	1,695	1,575	1,610	1,625	1,685	1,685	1,655	1,630
21/08/2012	1,725	1,605	1,640	1,655	1,715	1,715	1,685	1,660
28/08/2012	1,730	1,610	1,645	1,660	1,720	1,720	1,690	1,665
04/09/2012	1,735	1,615	1,650	1,665	1,725	1,725	1,695	1,670
11/09/2012	1,755	1,635	1,670	1,685	1,745	1,745	1,715	1,690
18/09/2012	1,765	1,645	1,680	1,695	1,755	1,755	1,725	1,700
25/09/2012	1,777	1,657	1,692	1,707	1,767	1,767	1,737	1,712
02/10/2012	1,787	1,667	1,702	1,717	1,777	1,777	1,747	1,722
09/10/2012	1,787	1,667	1,702	1,717	1,777	1,777	1,747	1,722
16/10/2012	1,787	1,667	1,702	1,717	1,777	1,777	1,747	1,722
23/10/2012	1,747	1,627	1,662	1,677	1,737	1,737	1,707	1,682
30/10/2012	1,730	1,610	1,645	1,660	1,720	1,720	1,690	1,665
06/11/2012	1,680	1,560	1,595	1,610	1,670	1,670	1,640	1,615
13/11/2012	1,670	1,550	1,585	1,600	1,660	1,660	1,630	1,605
20/11/2012	1,640	1,520	1,555	1,570	1,630	1,630	1,600	1,575
27/11/2012	1,610	1,490	1,525	1,540	1,600	1,600	1,570	1,545
04/12/2012	1,575	1,455	1,490	1,505	1,565	1,565	1,535	1,510
11/12/2012	1,530	1,410	1,445	1,460	1,520	1,520	1,490	1,465
18/12/2012	1,495	1,375	1,410	1,425	1,485	1,485	1,455	1,430
24/12/2012	1,495	1,375	1,410	1,425	1,485	1,485	1,455	1,430
31/12/2012	1,495	1,375	1,410	1,425	1,485	1,485	1,455	1,430
MEDIA	1,501	1,387	1,422	1,437	1,497	1,497	1,467	1,442

nq = non quotati

REGGIO EMILIA 2012
SUINI D'ALLEVAMENTO
(Euro/Kg)



REGGIO EMILIA 2012
SUINI DA MACELLO
 (Euro/Kg)

