

PERUGIA 1998

CAMERA DI COMMERCIO DI PERUGIA

Categoria: SUINI VIVI

Prezzi: (Franco Partenza) Per Kg peso vivo - IVA esclusa

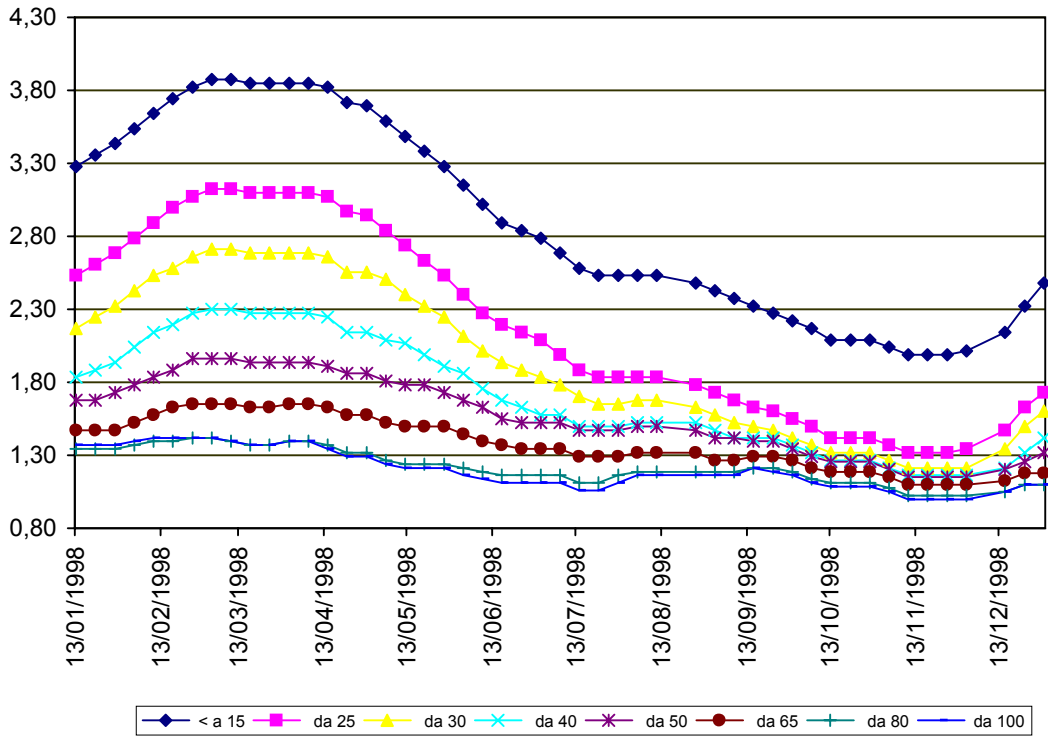
di Cosmino Giovanni Basile

SETTIMANE	SUINI D'ALLEVAMENTO (€/Kg)							
	< a 15	da 25	da 30	da 40	da 50	da 65	da 80	da 100
13/01/1998	3,28	2,53	2,17	1,83	1,68	1,47	1,34	1,37
20/01/1998	3,36	2,61	2,25	1,89	1,68	1,47	1,34	1,37
27/01/1998	3,43	2,69	2,32	1,94	1,73	1,47	1,34	1,37
03/02/1998	3,54	2,79	2,43	2,04	1,78	1,52	1,37	1,39
10/02/1998	3,64	2,89	2,53	2,14	1,83	1,58	1,39	1,42
17/02/1998	3,74	3,00	2,58	2,19	1,89	1,63	1,39	1,42
24/02/1998	3,82	3,07	2,66	2,27	1,96	1,65	1,42	1,42
03/03/1998	3,87	3,12	2,71	2,30	1,96	1,65	1,42	1,42
10/03/1998	3,87	3,12	2,71	2,30	1,96	1,65	1,39	1,39
17/03/1998	3,85	3,10	2,69	2,27	1,94	1,63	1,37	1,37
24/03/1998	3,85	3,10	2,69	2,27	1,94	1,63	1,37	1,37
31/03/1998	3,85	3,10	2,69	2,27	1,94	1,65	1,39	1,39
07/04/1998	3,85	3,10	2,69	2,27	1,94	1,65	1,39	1,39
14/04/1998	3,82	3,07	2,66	2,25	1,91	1,63	1,37	1,34
21/04/1998	3,72	2,97	2,56	2,14	1,86	1,58	1,32	1,29
28/04/1998	3,69	2,94	2,56	2,14	1,86	1,58	1,32	1,29
05/05/1998	3,59	2,84	2,50	2,09	1,81	1,52	1,27	1,24
12/05/1998	3,49	2,74	2,40	2,07	1,78	1,50	1,24	1,21
19/05/1998	3,38	2,63	2,32	1,99	1,78	1,50	1,24	1,21
26/05/1998	3,28	2,53	2,25	1,91	1,73	1,50	1,24	1,21
02/06/1998	3,15	2,40	2,12	1,86	1,68	1,45	1,21	1,16
09/06/1998	3,02	2,27	2,01	1,76	1,63	1,39	1,19	1,14
16/06/1998	2,89	2,19	1,94	1,68	1,55	1,37	1,16	1,11
23/06/1998	2,84	2,14	1,89	1,63	1,52	1,34	1,16	1,11
30/06/1998	2,79	2,09	1,83	1,58	1,52	1,34	1,16	1,11
07/07/1998	2,69	1,99	1,78	1,58	1,52	1,34	1,16	1,11
14/07/1998	2,58	1,89	1,70	1,50	1,47	1,29	1,11	1,06
21/07/1998	2,53	1,83	1,65	1,50	1,47	1,29	1,11	1,06
28/07/1998	2,53	1,83	1,65	1,50	1,47	1,29	1,16	1,11
04/08/1998	2,53	1,83	1,68	1,52	1,50	1,32	1,19	1,16
11/08/1998	2,53	1,83	1,68	1,52	1,50	1,32	1,19	1,16
25/08/1998	2,48	1,78	1,63	1,52	1,47	1,32	1,19	1,16
01/09/1998	2,43	1,73	1,58	1,47	1,42	1,27	1,19	1,16
08/09/1998	2,38	1,68	1,52	1,42	1,42	1,27	1,19	1,16
15/09/1998	2,32	1,63	1,50	1,42	1,39	1,29	1,21	1,21
22/09/1998	2,27	1,60	1,47	1,42	1,39	1,29	1,21	1,19
29/09/1998	2,22	1,55	1,42	1,37	1,34	1,27	1,19	1,16
06/10/1998	2,17	1,50	1,37	1,32	1,29	1,21	1,14	1,11
13/10/1998	2,09	1,42	1,32	1,27	1,25	1,19	1,11	1,08
20/10/1998	2,09	1,42	1,32	1,27	1,25	1,19	1,11	1,08
27/10/1998	2,09	1,42	1,32	1,27	1,25	1,19	1,11	1,08
03/11/1998	2,04	1,37	1,27	1,21	1,20	1,15	1,07	1,05
10/11/1998	1,99	1,32	1,21	1,16	1,15	1,10	1,02	1,00
17/11/1998	1,99	1,32	1,21	1,16	1,15	1,10	1,02	1,00
24/11/1998	1,99	1,32	1,21	1,16	1,15	1,10	1,02	1,00
01/12/1998	2,01	1,34	1,21	1,16	1,15	1,10	1,02	1,00
15/12/1998	2,14	1,47	1,34	1,21	1,20	1,13	1,05	1,05
22/12/1998	2,32	1,63	1,50	1,32	1,25	1,18	1,10	1,10
29/12/1998	2,48	1,73	1,60	1,42	1,32	1,18	1,10	1,10
MEDIA	2,91	2,19	1,94	1,71	1,57	1,38	1,22	1,20

PERUGIA 1998

SETTIMANE	SUINI DA MACELLO (€/Kg)							
	90/115	115/130	130/144	144/156	156/176	176/180	180/185	> 185
13/01/1998	1,436	1,270	1,296	1,322	1,343	1,239	:	:
20/01/1998	1,384	1,229	1,255	1,296	1,317	1,214	:	:
27/01/1998	1,384	1,229	1,255	1,296	1,317	1,214	:	:
03/02/1998	1,394	1,260	1,296	1,322	1,343	1,322	1,291	1,239
10/02/1998	1,425	1,291	1,327	1,353	1,374	1,353	1,322	1,270
17/02/1998	1,446	1,312	1,348	1,374	1,394	1,374	1,343	1,291
24/02/1998	1,420	1,286	1,322	1,348	1,369	1,348	1,317	1,265
03/03/1998	1,363	1,229	1,265	1,291	1,312	1,291	1,260	1,209
10/03/1998	1,312	1,178	1,214	1,239	1,260	1,239	1,209	1,157
17/03/1998	1,291	1,157	1,193	1,219	1,239	1,219	1,188	1,136
24/03/1998	1,291	1,209	1,245	1,270	1,291	1,270	1,239	1,188
31/03/1998	1,301	1,219	1,255	1,281	1,301	1,281	1,250	1,198
07/04/1998	1,291	1,209	1,245	1,270	1,291	1,270	1,239	1,188
14/04/1998	1,281	1,188	1,224	1,250	1,270	1,250	1,219	1,167
21/04/1998	1,234	1,141	1,178	1,203	1,224	1,203	1,172	1,121
28/04/1998	1,178	1,085	1,121	1,147	1,167	1,147	1,116	1,064
05/05/1998	1,110	1,033	1,069	1,095	1,116	1,095	1,064	1,012
12/05/1998	1,074	0,997	1,033	1,059	1,079	1,069	1,038	0,986
19/05/1998	1,074	0,997	1,033	1,059	1,079	1,069	1,038	0,986
26/05/1998	1,059	0,981	1,017	1,043	1,064	1,054	1,023	0,971
02/06/1998	1,017	0,940	0,976	1,002	1,023	1,012	0,971	0,919
09/06/1998	1,002	0,924	0,961	0,986	1,007	0,997	0,955	0,904
16/06/1998	0,966	0,888	0,924	0,950	0,971	0,945	0,904	0,852
23/06/1998	1,033	0,909	0,945	0,971	0,992	0,966	0,924	0,873
30/06/1998	1,033	0,909	0,945	0,971	0,992	0,966	0,924	0,873
07/07/1998	1,002	0,878	0,914	0,940	0,961	0,935	0,893	0,842
14/07/1998	0,976	0,852	0,878	0,904	0,924	0,899	0,857	0,806
21/07/1998	1,007	0,883	0,909	0,935	0,955	0,930	0,888	0,837
28/07/1998	1,074	0,992	1,017	1,043	1,064	1,038	0,997	0,945
04/08/1998	1,183	1,048	1,074	1,100	1,121	1,095	1,054	1,002
11/08/1998	1,136	1,002	1,028	1,048	1,069	1,043	1,002	0,950
25/08/1998	1,136	1,002	1,028	1,048	1,069	1,043	1,002	0,950
01/09/1998	1,162	1,028	1,054	1,074	1,095	1,069	1,028	0,976
08/09/1998	1,188	1,054	1,079	1,152	1,172	1,147	1,105	1,054
15/09/1998	1,214	1,147	1,183	1,224	1,239	1,209	1,162	1,116
22/09/1998	1,188	1,126	1,162	1,203	1,219	1,188	1,141	1,095
29/09/1998	1,131	1,069	1,105	1,147	1,162	1,131	1,085	1,038
06/10/1998	1,054	0,992	1,028	1,069	1,085	1,054	1,007	0,961
13/10/1998	1,007	0,966	1,002	1,043	1,059	1,028	0,981	0,935
20/10/1998	1,007	0,966	1,002	1,043	1,059	1,028	0,981	0,935
27/10/1998	1,007	0,966	1,002	1,043	1,059	1,028	0,981	0,935
03/11/1998	0,955	0,888	0,924	0,966	0,981	0,997	0,950	0,904
10/11/1998	0,888	0,821	0,857	0,914	0,930	0,945	0,873	0,826
17/11/1998	0,888	0,821	0,857	0,914	0,930	0,919	0,847	0,801
24/11/1998	0,930	0,857	0,919	0,976	0,992	0,961	0,888	0,868
01/12/1998	0,971	0,868	0,930	0,986	1,002	0,971	0,924	0,878
15/12/1998	1,038	0,935	0,997	1,054	1,069	1,038	0,992	0,945
22/12/1998	1,110	0,955	1,017	1,074	1,090	1,059	1,012	0,966
29/12/1998	1,110	0,955	1,017	1,074	1,090	1,059	1,012	0,966
MEDIA	1,146	1,044	1,080	1,114	1,133	1,106	1,058	1,009

PERUGIA 1998
SUINI D'ALLEVAMENTO
 (Euro/Kg)



PERUGIA 1998
SUINI DA MACELLO
 (Euro/Kg)

