

BRESCIA 2012

CAMERA DI COMMERCIO DI BRESCIA

Categoria: SUINI VIVI

Prezzi: (Franco Partenza) Per Kg peso vivo - IVA esclusa

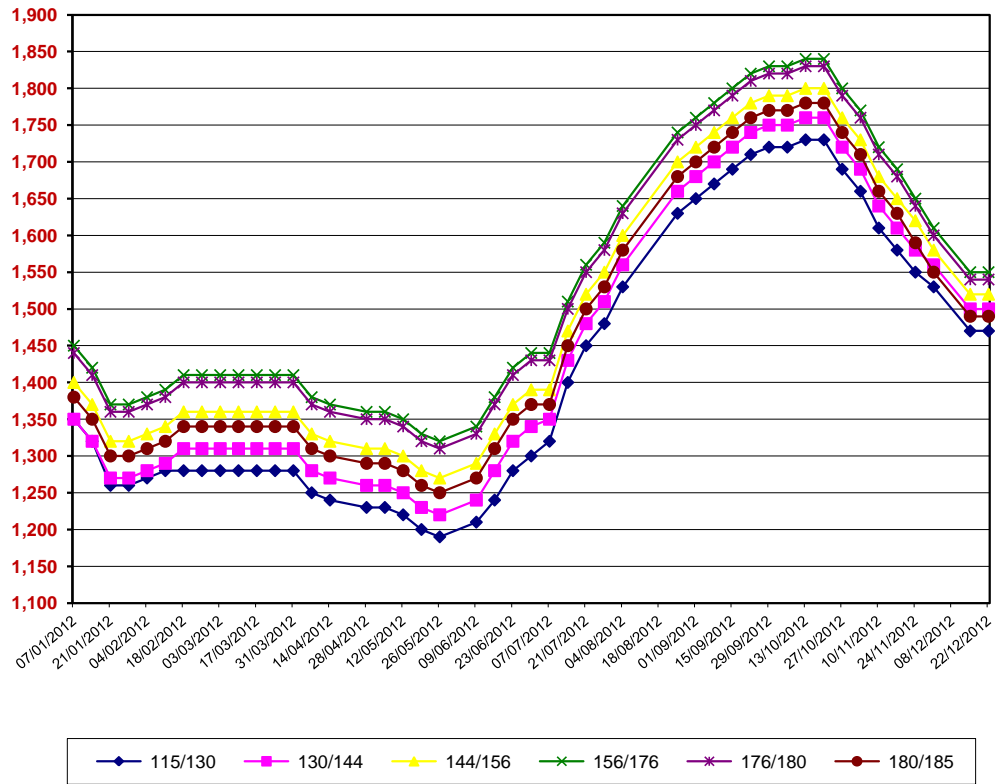
SETTIMANE	SUINI D'ALLEVAMENTO (€/Kg)							
	< a 15	da 25	da 30	da 40	da 50	da 65	da 80	da 100
07/01/2012	3,820	2,840	2,600	2,140	1,780	1,610	1,550	1,530
14/01/2012	3,870	2,890	2,660	2,190	1,810	1,610	1,550	1,530
21/01/2012	3,900	2,920	2,690	2,210	1,830	1,610	1,550	1,530
28/01/2012	3,950	2,970	2,740	2,260	1,840	1,610	1,550	1,530
04/02/2012	3,990	3,020	2,790	2,310	1,890	1,610	1,550	1,530
11/02/2012	4,020	3,050	2,830	2,340	1,910	1,610	1,550	1,530
18/02/2012	4,050	3,090	2,870	2,380	1,930	1,620	1,550	1,530
25/02/2012	4,070	3,130	2,910	2,420	1,960	1,630	1,550	1,530
03/03/2012	4,090	3,160	2,950	2,440	1,980	1,650	1,550	1,530
10/03/2012	4,100	3,180	2,970	2,460	2,000	1,670	1,550	1,530
17/03/2012	4,100	3,190	3,000	2,480	2,030	1,670	1,550	1,530
24/03/2012	4,100	3,190	3,020	2,500	2,060	1,680	1,550	1,530
31/03/2012	4,100	3,210	3,040	2,520	2,080	1,700	1,550	1,530
14/04/2012	4,100	3,210	3,040	2,540	2,100	1,720	1,550	1,530
21/04/2012	4,100	3,210	3,040	2,560	2,120	1,740	1,570	1,530
28/04/2012	4,100	3,210	3,040	2,560	2,200	1,760	1,590	1,530
05/05/2012	4,100	3,210	3,040	2,560	2,200	1,760	1,590	1,530
12/05/2012	4,100	3,210	3,040	2,560	2,200	1,760	1,590	1,530
19/05/2012	4,060	3,180	3,020	2,560	2,200	1,780	1,600	1,530
26/05/2012	4,060	3,180	3,020	2,560	2,200	1,780	1,600	1,530
09/06/2012	4,000	3,100	2,990	2,540	2,200	1,780	1,600	1,530
16/06/2012	3,980	3,050	2,940	2,510	2,200	1,780	1,600	1,530
23/06/2012	3,750	3,000	2,900	2,480	2,200	1,780	1,600	1,550
30/06/2012	3,700	2,950	2,850	2,450	2,200	1,780	1,600	1,550
07/07/2012	3,630	2,850	2,740	2,420	2,140	1,780	1,600	1,550
14/07/2012	3,600	2,820	2,710	2,390	2,140	1,780	1,600	1,550
21/07/2012	3,550	2,770	2,660	2,340	2,090	1,800	1,650	1,600
28/07/2012	3,520	2,740	2,610	2,290	2,040	1,800	1,680	1,630
04/08/2012	3,500	2,720	2,590	2,270	2,020	1,800	1,680	1,630
25/08/2012	3,500	2,720	2,500	2,180	1,930	1,820	1,750	1,700
01/09/2012	3,500	2,720	2,500	2,180	1,930	1,820	1,750	1,700
08/09/2012	3,500	2,720	2,500	2,180	1,930	1,820	1,750	1,700
15/09/2012	3,500	2,720	2,500	2,180	1,930	1,820	1,750	1,720
22/09/2012	3,500	2,720	2,500	2,180	1,930	1,820	1,750	1,740
29/09/2012	3,600	2,720	2,500	2,180	1,930	1,820	1,750	1,740
06/10/2012	3,610	2,730	2,500	2,180	1,930	1,820	1,750	1,740
13/10/2012	3,620	2,740	2,500	2,180	1,930	1,820	1,770	1,750
20/10/2012	3,620	2,740	2,500	2,180	1,930	1,820	1,770	1,750
27/10/2012	3,640	2,760	2,500	2,180	1,930	1,820	1,770	1,750
03/11/2012	3,680	2,800	2,520	2,180	1,930	1,820	1,770	1,750
10/11/2012	3,730	2,830	2,530	2,180	1,930	1,820	1,750	1,730
17/11/2012	3,760	2,840	2,530	2,180	1,930	1,820	1,750	1,730
24/11/2012	3,790	2,850	2,530	2,180	1,930	1,800	1,740	1,700
01/12/2012	3,810	2,860	2,540	2,180	1,930	1,800	1,720	1,680
15/12/2012	3,810	2,860	2,520	2,160	1,910	1,780	1,700	1,600
22/12/2012	3,810	2,860	2,520	2,160	1,910	1,780	1,700	1,600
MEDIA	3,826	2,944	2,739	2,332	2,007	1,750	1,642	1,604

BRESCIA 2012

SETTIMANE	SUINI DA MACELLO (€/Kg)							
	90/115	115/130	130/144	144/156	156/176	176/180	180/185	> 185
07/01/2012	nq	1,350	1,350	1,400	1,450	1,440	1,380	1,350
14/01/2012	nq	1,320	1,320	1,370	1,420	1,410	1,350	1,320
21/01/2012	nq	1,260	1,270	1,320	1,370	1,360	1,300	1,270
28/01/2012	nq	1,260	1,270	1,320	1,370	1,360	1,300	1,270
04/02/2012	nq	1,270	1,280	1,330	1,380	1,370	1,310	1,280
11/02/2012	nq	1,280	1,290	1,340	1,390	1,380	1,320	1,290
18/02/2012	nq	1,280	1,310	1,360	1,410	1,400	1,340	1,310
25/02/2012	nq	1,280	1,310	1,360	1,410	1,400	1,340	1,310
03/03/2012	nq	1,280	1,310	1,360	1,410	1,400	1,340	1,310
10/03/2012	nq	1,280	1,310	1,360	1,410	1,400	1,340	1,310
17/03/2012	nq	1,280	1,310	1,360	1,410	1,400	1,340	1,310
24/03/2012	nq	1,280	1,310	1,360	1,410	1,400	1,340	1,310
31/03/2012	nq	1,280	1,310	1,360	1,410	1,400	1,340	1,310
07/04/2012	nq	1,250	1,280	1,330	1,380	1,370	1,310	1,280
14/04/2012	nq	1,240	1,270	1,320	1,370	1,360	1,300	1,270
28/04/2012	nq	1,230	1,260	1,310	1,360	1,350	1,290	1,260
05/05/2012	nq	1,230	1,260	1,310	1,360	1,350	1,290	1,260
12/05/2012	nq	1,220	1,250	1,300	1,350	1,340	1,280	1,250
19/05/2012	nq	1,200	1,230	1,280	1,330	1,320	1,260	1,230
26/05/2012	nq	1,190	1,220	1,270	1,320	1,310	1,250	1,220
09/06/2012	nq	1,210	1,240	1,290	1,340	1,330	1,270	1,240
16/06/2012	nq	1,240	1,280	1,330	1,380	1,370	1,310	1,280
23/06/2012	nq	1,280	1,320	1,370	1,420	1,410	1,350	1,320
30/06/2012	nq	1,300	1,340	1,390	1,440	1,430	1,370	1,340
07/07/2012	nq	1,320	1,350	1,390	1,440	1,430	1,370	1,340
14/07/2012	nq	1,400	1,430	1,470	1,510	1,500	1,450	1,420
21/07/2012	nq	1,450	1,480	1,520	1,560	1,550	1,500	1,470
28/07/2012	nq	1,480	1,510	1,550	1,590	1,580	1,530	1,500
04/08/2012	nq	1,530	1,560	1,600	1,640	1,630	1,580	1,550
25/08/2012	nq	1,630	1,660	1,700	1,740	1,730	1,680	1,650
01/09/2012	nq	1,650	1,680	1,720	1,760	1,750	1,700	1,670
08/09/2012	nq	1,670	1,700	1,740	1,780	1,770	1,720	1,690
15/09/2012	nq	1,690	1,720	1,760	1,800	1,790	1,740	1,710
22/09/2012	nq	1,710	1,740	1,780	1,820	1,810	1,760	1,730
29/09/2012	nq	1,720	1,750	1,790	1,830	1,820	1,770	1,740
06/10/2012	nq	1,720	1,750	1,790	1,830	1,820	1,770	1,740
13/10/2012	nq	1,730	1,760	1,800	1,840	1,830	1,780	1,750
20/10/2012	nq	1,730	1,760	1,800	1,840	1,830	1,780	1,750
27/10/2012	nq	1,690	1,720	1,760	1,800	1,790	1,740	1,710
03/11/2012	nq	1,660	1,690	1,730	1,770	1,760	1,710	1,680
10/11/2012	nq	1,610	1,640	1,680	1,720	1,710	1,660	1,630
17/11/2012	nq	1,580	1,610	1,650	1,690	1,680	1,630	1,600
24/11/2012	nq	1,550	1,580	1,620	1,650	1,640	1,590	1,560
01/12/2012	nq	1,530	1,560	1,580	1,610	1,600	1,550	1,520
15/12/2012	nq	1,470	1,500	1,520	1,550	1,540	1,490	1,460
22/12/2012	nq	1,470	1,500	1,520	1,550	1,540	1,490	1,460
MEDIA	nq	1,419	1,447	1,491	1,535	1,525	1,470	1,440

nq = non quotati

BRESCIA 2012
SUINI DA MACELLO
 (Euro/Kg)



nq = non quotati