

12/2008

Mercato
Mercati nazionali

5.4.19.2



BRESCIA 2008

CAMERA DI COMMERCIO DI BRESCIA

Categoria: SUINI VIVI

Prezzi: (Franco Partenza) Per Kg peso vivo - IVA esclusa

di Cosmino Giovanni Basi

SETTIMANE	SUINI D'ALLEVAMENTO (€/Kg)							
	< a 15	da 25	da 30	da 40	da 50	da 65	da 80	da 100
12/01/2008	3,00	2,02	1,75	1,42	1,33	1,25	1,27	1,28
26/01/2008	3,00	2,10	1,75	1,40	1,30	1,26	1,25	1,25
02/02/2008	3,00	2,10	1,75	1,40	1,30	1,26	1,25	1,25
09/02/2008	3,00	2,10	1,75	1,41	1,31	1,26	1,25	1,25
16/02/2008	3,00	2,10	1,75	1,43	1,33	1,28	1,25	1,25
23/02/2008	3,00	2,10	1,75	1,43	1,33	1,28	1,25	1,25
01/03/2008	3,00	2,10	1,75	1,43	1,34	1,29	1,26	1,26
08/03/2008	3,03	2,13	1,78	1,46	1,37	1,32	1,29	1,29
15/03/2008	3,04	2,14	1,79	1,49	1,40	1,35	1,29	1,29
29/03/2008	3,04	2,14	1,84	1,54	1,45	1,40	1,31	1,31
05/04/2008	3,04	2,14	1,84	1,58	1,52	1,40	1,31	1,31
12/04/2008	3,04	2,10	1,84	1,60	1,54	1,40	1,31	1,29
19/04/2008	3,04	2,10	1,84	1,60	1,54	1,40	1,31	1,26
03/05/2008	3,04	2,10	1,84	1,60	1,54	1,40	1,31	1,26
10/05/2008	3,04	2,10	1,84	1,60	1,54	1,40	1,31	1,26
17/05/2008	3,01	2,07	1,84	1,60	1,54	1,40	1,31	1,26
24/05/2008	2,96	2,02	1,84	1,60	1,54	1,40	1,32	1,27
31/05/2008	2,96	2,02	1,84	1,60	1,57	1,43	1,35	1,30
07/06/2008	2,96	2,02	1,84	1,63	1,60	1,46	1,38	1,33
14/06/2008	2,97	2,03	1,88	1,70	1,65	1,51	1,39	1,34
21/06/2008	2,97	2,03	1,89	1,71	1,66	1,52	1,40	1,35
28/06/2008	2,97	2,04	1,90	1,72	1,69	1,53	1,41	1,35
05/07/2008	2,97	2,04	1,94	1,76	1,73	1,57	1,43	1,37
12/07/2008	2,97	2,04	1,94	1,76	1,73	1,57	1,43	1,37
19/07/2008	2,97	2,04	1,94	1,76	1,73	1,57	1,43	1,37
26/07/2008	2,97	2,04	1,94	1,78	1,75	1,59	1,45	1,40
09/08/2008	2,97	2,10	1,99	1,84	1,81	1,65	1,51	1,49
23/08/2008	2,97	2,10	2,00	1,89	1,85	1,70	1,55	1,50
30/08/2008	2,99	2,12	2,02	1,89	1,85	1,70	1,55	1,50
06/09/2008	2,99	2,13	2,03	1,89	1,85	1,70	1,55	1,50
13/09/2008	3,00	2,16	2,06	1,92	1,88	1,72	1,57	1,52
20/09/2008	3,02	2,18	2,19	1,94	1,88	1,72	1,57	1,52
27/09/2008	3,04	2,20	2,11	1,96	1,88	1,72	1,57	1,52
04/10/2008	3,04	2,20	2,11	1,96	1,88	1,72	1,57	1,52
11/10/2008	3,06	2,22	2,13	1,98	1,90	1,74	1,59	1,54
18/10/2008	3,08	2,25	2,16	1,99	1,90	1,74	1,59	1,54
25/10/2008	3,10	2,27	2,18	2,01	1,90	1,74	1,59	1,54
08/11/2008	3,14	2,30	2,20	2,01	1,90	1,70	1,55	1,50
15/11/2008	3,15	2,31	2,21	1,99	1,88	1,68	1,53	1,48
22/11/2008	3,20	2,36	2,26	1,97	1,86	1,66	1,51	1,46
29/11/2008	3,23	2,37	2,26	1,97	1,86	1,66	1,48	1,45
06/12/2008	3,28	2,39	2,28	1,97	1,86	1,66	1,46	1,43
13/12/2008	3,33	2,42	2,30	1,97	1,86	1,66	1,44	1,41
20/12/2008	3,38	2,44	2,31	1,98	1,86	1,60	1,40	1,38
MEDIA	3,04	2,15	1,96	1,73	1,66	1,52	1,41	1,38

BRESCIA 2008

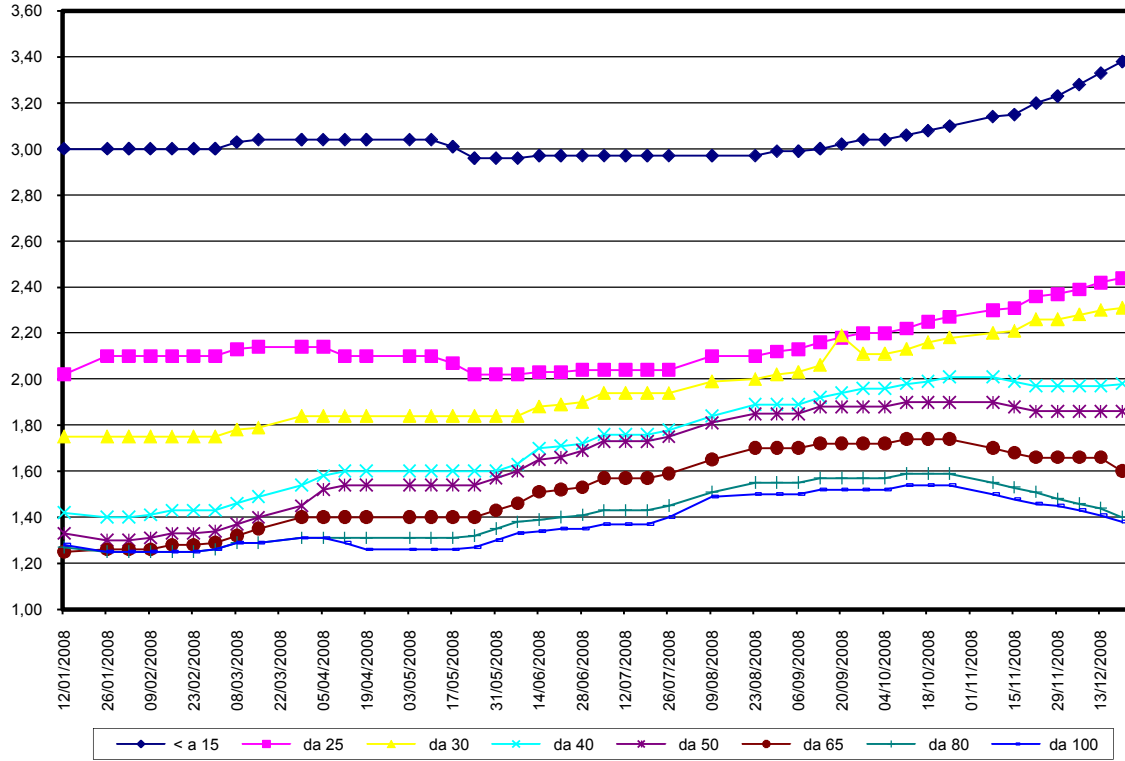
SETTIMANE	SUINI DA MACELLO (€/Kg)							
	90/115	115/130	130/144	144/156	156/176	176/180	180/185	> 185
12/01/2008	nq	1,200	1,210	1,220	1,240	1,220	1,190	1,130
26/01/2008	nq	1,200	1,250	1,300	1,350	1,250	1,200	1,180
02/02/2008	nq	1,200	1,220	1,270	1,320	1,220	1,170	1,150
09/02/2008	nq	1,180	1,200	1,250	1,300	1,200	1,150	1,130
16/02/2008	nq	1,150	1,170	1,220	1,270	1,170	1,120	1,100
23/02/2008	nq	1,150	1,140	1,190	1,240	1,140	1,090	1,070
01/03/2008	nq	1,160	1,150	1,200	1,250	1,150	1,100	1,080
08/03/2008	nq	1,190	1,180	1,230	1,280	1,180	1,130	1,110
15/03/2008	nq	1,190	1,200	1,250	1,300	1,200	1,150	1,130
29/03/2008	nq	1,190	1,170	1,200	1,250	1,180	1,140	1,120
05/04/2008	nq	1,160	1,140	1,170	1,220	1,150	1,110	1,090
12/04/2008	nq	1,140	1,120	1,150	1,200	1,130	1,090	1,070
19/04/2008	nq	1,110	1,090	1,120	1,170	1,100	1,060	1,040
03/05/2008	nq	1,110	1,090	1,120	1,170	1,100	1,060	1,040
10/05/2008	nq	1,140	1,140	1,160	1,200	1,130	1,090	1,070
17/05/2008	nq	1,160	1,180	1,200	1,240	1,170	1,130	1,110
24/05/2008	nq	1,170	1,190	1,210	1,260	1,190	1,150	1,110
31/05/2008	nq	1,180	1,200	1,220	1,270	1,200	1,160	1,120
07/06/2008	nq	1,210	1,230	1,250	1,300	1,230	1,190	1,150
14/06/2008	nq	1,220	1,270	1,290	1,340	1,270	1,230	1,190
21/06/2008	nq	1,220	1,270	1,290	1,340	1,270	1,230	1,190
28/06/2008	nq	1,220	1,270	1,290	1,340	1,270	1,230	1,190
05/07/2008	nq	1,220	1,270	1,290	1,340	1,270	1,230	1,190
12/07/2008	nq	1,220	1,270	1,290	1,340	1,270	1,230	1,190
19/07/2008	nq	1,230	1,280	1,300	1,350	1,280	1,240	1,200
26/07/2008	nq	1,300	1,350	1,370	1,420	1,350	1,310	1,270
09/08/2008	nq	1,410	1,440	1,460	1,510	1,440	1,400	1,360
23/08/2008	nq	1,410	1,420	1,440	1,470	1,440	1,400	1,360
30/08/2008	nq	1,410	1,420	1,440	1,470	1,440	1,400	1,360
06/09/2008	nq	1,450	1,480	1,510	1,550	1,520	1,470	1,430
13/09/2008	nq	1,500	1,530	1,560	1,600	1,570	1,520	1,480
20/09/2008	nq	1,520	1,550	1,580	1,620	1,590	1,540	1,500
27/09/2008	nq	1,500	1,530	1,560	1,600	1,570	1,520	1,480
04/10/2008	nq	1,500	1,530	1,560	1,600	1,570	1,520	1,480
11/10/2008	nq	1,520	1,550	1,580	1,620	1,590	1,540	1,500
18/10/2008	nq	1,550	1,560	1,600	1,630	1,600	1,550	1,510
25/10/2008	nq	1,550	1,560	1,600	1,630	1,600	1,550	1,510
08/11/2008	nq	1,350	1,360	1,380	1,400	1,380	1,330	1,300
15/11/2008	nq	1,330	1,340	1,360	1,380	1,360	1,310	1,280
22/11/2008	nq	1,340	1,350	1,370	1,390	1,370	1,320	1,290
29/11/2008	nq	1,340	1,350	1,370	1,390	1,370	1,320	1,290
06/12/2008	nq	1,280	1,290	1,310	1,330	1,310	1,260	1,230
13/12/2008	nq	1,250	1,260	1,280	1,300	1,280	1,230	1,200
20/12/2008	nq	1,200	1,210	1,230	1,250	1,230	1,180	1,150
MEDIA	nq	1,278	1,295	1,324	1,365	1,307	1,262	1,230

nq = non quotati

BRESCIA 2008

SUINI D'ALLEVAMENTO

(Euro/Kg)



BRESCIA 2008
SUNI DA MACELLO
 (Euro/Kg)

