

Mercato
Mercati nazionali

5.4.13.2



BRESCIA 2003

CAMERA DI COMMERCIO DI BRESCIA

Categoria: SUINI VIVI

Prezzi: (Franco Partenza) Per Kg peso vivo - IVA esclusa

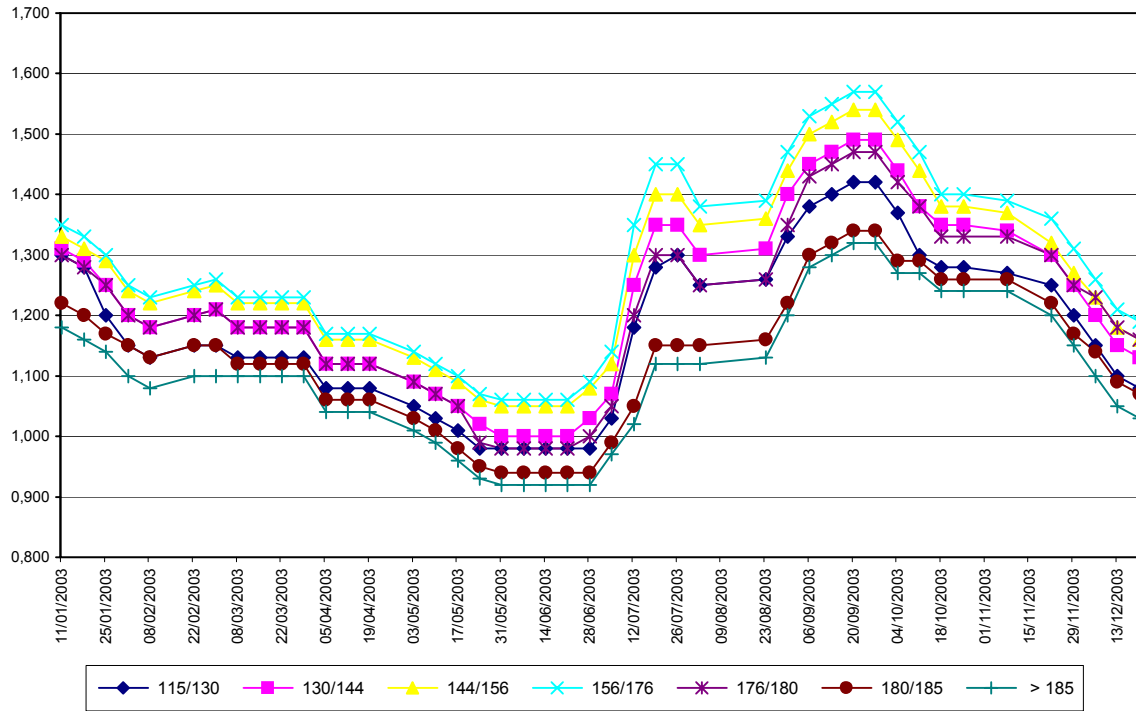
di Cosmino Giovanni Basile

SETTIMANE	SUINI D'ALLEVAMENTO €/Kg)							
	< a 15	da 25	da 30	da 40	da 50	da 65	da 80	da 100
11/01/2003	3,35	2,58	2,20	1,78	1,66	1,52	1,35	1,35
18/01/2003	3,40	2,63	2,26	1,80	1,66	1,52	1,33	1,33
25/01/2003	3,50	2,67	2,28	1,81	1,66	1,52	1,33	1,33
01/02/2003	3,55	2,71	2,31	1,84	1,66	1,52	1,33	1,33
08/02/2003	3,60	2,75	2,35	1,87	1,66	1,52	1,33	1,33
22/02/2003	3,70	2,85	2,45	1,97	1,70	1,52	1,33	1,33
01/03/2003	3,72	2,88	2,46	1,98	1,70	1,52	1,33	1,33
08/03/2003	3,72	2,91	2,49	2,01	1,73	1,52	1,33	1,33
15/03/2003	3,72	2,91	2,51	2,04	1,75	1,52	1,33	1,33
22/03/2003	3,72	2,91	2,51	2,04	1,75	1,52	1,33	1,33
29/03/2003	3,72	2,91	2,51	2,04	1,75	1,52	1,33	1,33
05/04/2003	3,72	2,91	2,51	2,07	1,79	1,53	1,33	1,33
12/04/2003	3,72	2,91	2,53	2,10	1,83	1,55	1,33	1,33
19/04/2003	3,72	2,91	2,53	2,10	1,83	1,55	1,33	1,33
03/05/2003	3,72	2,91	2,53	2,10	1,83	1,55	1,33	1,33
10/05/2003	3,72	2,91	2,53	2,10	1,86	1,57	1,33	1,33
17/05/2003	3,72	2,89	2,50	2,10	1,86	1,57	1,33	1,33
24/05/2003	3,72	2,84	2,47	2,10	1,88	1,60	1,36	1,33
31/05/2003	3,72	2,84	2,47	2,10	1,90	1,62	1,38	1,33
07/06/2003	3,68	2,80	2,43	2,10	1,91	1,65	1,39	1,33
14/06/2003	3,63	2,75	2,38	2,10	1,91	1,65	1,39	1,33
21/06/2003	3,60	2,70	2,33	2,06	1,91	1,65	1,39	1,33
28/06/2003	3,50	2,67	2,30	2,03	1,91	1,65	1,39	1,33
05/07/2003	3,45	2,65	2,27	2,00	1,91	1,65	1,39	1,33
12/07/2003	3,35	2,60	2,22	1,98	1,90	1,65	1,39	1,33
19/07/2003	3,30	2,55	2,18	1,95	1,90	1,65	1,39	1,33
26/07/2003	3,25	2,50	2,13	1,90	1,87	1,67	1,42	1,36
02/08/2003	3,25	2,45	2,08	1,90	1,87	1,67	1,42	1,36
23/08/2003	3,25	2,40	2,08	1,90	1,87	1,67	1,42	1,36
30/08/2003	3,25	2,35	2,02	1,83	1,82	1,67	1,42	1,36
06/09/2003	3,25	2,34	1,98	1,79	1,78	1,66	1,42	1,36
13/09/2003	3,25	2,32	1,95	1,76	1,75	1,66	1,42	1,36
20/09/2003	3,25	2,32	1,95	1,75	1,74	1,66	1,45	1,40
27/09/2003	3,25	2,32	1,95	1,75	1,74	1,66	1,45	1,40
04/10/2003	3,25	2,32	1,95	1,75	1,74	1,66	1,45	1,40
11/10/2003	3,25	2,32	1,95	1,75	1,74	1,68	1,47	1,41
18/10/2003	3,25	2,32	1,95	1,75	1,74	1,68	1,47	1,41
25/10/2003	3,25	2,32	1,95	1,75	1,74	1,68	1,47	1,41
08/11/2003	3,25	2,32	1,95	1,75	1,74	1,68	1,47	1,41
22/11/2003	3,30	2,35	1,95	1,75	1,70	1,60	1,47	1,41
29/11/2003	3,30	2,35	1,95	1,75	1,70	1,60	1,47	1,41
06/12/2003	3,33	2,38	1,95	1,75	1,70	1,62	1,44	1,38
13/12/2003	3,36	2,42	1,96	1,72	1,65	1,57	1,39	1,33
20/12/2003	3,38	2,44	1,98	1,70	1,63	1,55	1,37	1,31
MEDIA	3,47	2,62	2,23	1,91	1,78	1,60	1,39	1,35

BRESCIA 2003

SETTIMANE	SUINI DA MACELLO (€/Kg)						
	115/130	130/144	144/156	156/176	176/180	180/185	> 185
11/01/2003	1,300	1,310	1,330	1,350	1,300	1,220	1,180
18/01/2003	1,280	1,290	1,310	1,330	1,280	1,200	1,160
25/01/2003	1,200	1,250	1,290	1,300	1,250	1,170	1,140
01/02/2003	1,150	1,200	1,240	1,250	1,200	1,150	1,100
08/02/2003	1,130	1,180	1,220	1,230	1,180	1,130	1,080
22/02/2003	1,150	1,200	1,240	1,250	1,200	1,150	1,100
01/03/2003	1,150	1,210	1,250	1,260	1,210	1,150	1,100
08/03/2003	1,130	1,180	1,220	1,230	1,180	1,120	1,100
15/03/2003	1,130	1,180	1,220	1,230	1,180	1,120	1,100
22/03/2003	1,130	1,180	1,220	1,230	1,180	1,120	1,100
29/03/2003	1,130	1,180	1,220	1,230	1,180	1,120	1,100
05/04/2003	1,080	1,120	1,160	1,170	1,120	1,060	1,040
12/04/2003	1,080	1,120	1,160	1,170	1,120	1,060	1,040
19/04/2003	1,080	1,120	1,160	1,170	1,120	1,060	1,040
03/05/2003	1,050	1,090	1,130	1,140	1,090	1,030	1,010
10/05/2003	1,030	1,070	1,110	1,120	1,070	1,010	0,990
17/05/2003	1,010	1,050	1,090	1,100	1,050	0,980	0,960
24/05/2003	0,980	1,020	1,060	1,070	0,990	0,950	0,930
31/05/2003	0,980	1,000	1,050	1,060	0,980	0,940	0,920
07/06/2003	0,980	1,000	1,050	1,060	0,980	0,940	0,920
14/06/2003	0,980	1,000	1,050	1,060	0,980	0,940	0,920
21/06/2003	0,980	1,000	1,050	1,060	0,980	0,940	0,920
28/06/2003	0,980	1,030	1,080	1,090	1,000	0,940	0,920
05/07/2003	1,030	1,070	1,120	1,140	1,050	0,990	0,970
12/07/2003	1,180	1,250	1,300	1,350	1,200	1,050	1,020
19/07/2003	1,280	1,350	1,400	1,450	1,300	1,150	1,120
26/07/2003	1,300	1,350	1,400	1,450	1,300	1,150	1,120
02/08/2003	1,250	1,300	1,350	1,380	1,250	1,150	1,120
23/08/2003	1,260	1,310	1,360	1,390	1,260	1,160	1,130
30/08/2003	1,330	1,400	1,440	1,470	1,350	1,220	1,200
06/09/2003	1,380	1,450	1,500	1,530	1,430	1,300	1,280
13/09/2003	1,400	1,470	1,520	1,550	1,450	1,320	1,300
20/09/2003	1,420	1,490	1,540	1,570	1,470	1,340	1,320
27/09/2003	1,420	1,490	1,540	1,570	1,470	1,340	1,320
04/10/2003	1,370	1,440	1,490	1,520	1,420	1,290	1,270
11/10/2003	1,300	1,380	1,440	1,470	1,380	1,290	1,270
18/10/2003	1,280	1,350	1,380	1,400	1,330	1,260	1,240
25/10/2003	1,280	1,350	1,380	1,400	1,330	1,260	1,240
08/11/2003	1,270	1,340	1,370	1,390	1,330	1,260	1,240
22/11/2003	1,250	1,300	1,320	1,360	1,300	1,220	1,200
29/11/2003	1,200	1,250	1,270	1,310	1,250	1,170	1,150
06/12/2003	1,150	1,200	1,230	1,260	1,230	1,140	1,100
13/12/2003	1,100	1,150	1,180	1,210	1,180	1,090	1,050
20/12/2003	1,080	1,130	1,160	1,190	1,160	1,070	1,030
MEDIA	1,173	1,223	1,264	1,285	1,210	1,130	1,104

BRESCIA 2003
SUINI DA MACELLO
 (Euro/Kg)



Ente Regionale per i Servizi
 all'Agricoltura e alle Foreste