

CREMONA 2002

CAMERA DI COMMERCIO DI CREMONA

Categoria: SUINI VIVI

Prezzi: (Franco Partenza) Per Kg peso vivo - IVA esclusa

di Cosmino Giovanni Basile

SETTIMANE	SUINI D'ALLEVAMENTO (€/Kg)							
	< a 15	da 25	da 30	da 40	da 50	da 65	da 80	da 100
02/01/2002	nq	2,61	2,43	2,17	1,96	1,65	1,42	1,39
09/01/2002	nq	2,72	2,45	2,17	1,95	1,64	1,42	1,40
16/01/2002	nq	2,82	2,55	2,17	1,95	1,64	1,42	1,40
23/01/2002	nq	2,87	2,60	2,22	1,95	1,64	1,42	1,40
30/01/2002	nq	2,95	2,68	2,27	1,95	1,64	1,42	1,40
06/02/2002	nq	3,00	2,73	2,30	1,95	1,64	1,42	1,40
13/02/2002	nq	3,05	2,76	2,30	1,95	1,64	1,42	1,40
20/02/2002	nq	3,05	2,76	2,30	1,95	1,64	1,42	1,40
27/02/2002	nq	3,15	2,81	2,35	2,00	1,69	1,47	1,45
06/03/2002	nq	3,15	2,84	2,38	2,03	1,72	1,47	1,45
13/03/2002	nq	3,15	2,84	2,38	2,03	1,72	1,47	1,45
20/03/2002	nq	3,15	2,84	2,38	2,03	1,72	1,47	1,45
27/03/2002	nq	3,10	2,79	2,33	2,03	1,72	1,47	1,45
03/04/2002	nq	3,10	2,79	2,33	2,03	1,72	1,47	1,45
10/04/2002	nq	3,05	2,74	2,30	2,00	1,69	1,44	1,42
17/04/2002	nq	3,00	2,69	2,27	1,97	1,66	1,41	1,39
24/04/2002	nq	2,97	2,66	2,24	1,92	1,61	1,36	1,34
08/05/2002	nq	2,87	2,56	2,14	1,85	1,54	1,29	1,27
15/05/2002	nq	2,87	2,56	2,14	1,85	1,54	1,29	1,27
22/05/2002	nq	2,87	2,56	2,14	1,85	1,54	1,29	1,27
29/05/2002	nq	2,87	2,56	2,14	1,85	1,54	1,29	1,27
06/06/2002	nq	2,87	2,56	2,14	1,85	1,54	1,29	1,27
12/06/2002	nq	2,85	2,54	2,14	1,85	1,54	1,29	1,27
19/06/2002	nq	2,82	2,51	2,11	1,85	1,54	1,29	1,27
26/06/2002	nq	2,78	2,48	2,09	1,85	1,54	1,29	1,27
03/07/2002	nq	2,76	2,46	2,07	1,85	1,54	1,29	1,27
10/07/2002	nq	2,73	2,43	2,04	1,85	1,54	1,29	1,27
17/07/2002	nq	2,73	2,43	2,04	1,85	1,54	1,29	1,27
24/07/2002	nq	2,63	2,33	1,94	1,80	1,49	1,24	1,22
31/07/2002	nq	2,63	2,33	1,94	1,80	1,59	1,34	1,32
07/08/2002	nq	2,63	2,33	1,94	1,80	1,59	1,34	1,32
21/08/2002	nq	2,61	2,31	1,92	1,80	1,59	1,34	1,32
28/08/2002	nq	2,60	2,30	1,91	1,80	1,59	1,34	1,32
04/09/2002	nq	2,57	2,28	1,91	1,80	1,59	1,39	1,37
11/09/2002	nq	2,54	2,25	1,89	1,78	1,59	1,39	1,37
18/09/2002	nq	2,52	2,23	1,87	1,78	1,59	1,39	1,37
25/09/2002	nq	2,47	2,18	1,82	1,75	1,59	1,39	1,37
02/10/2002	nq	2,42	2,14	1,78	1,73	1,59	1,39	1,37
09/10/2002	nq	2,39	2,11	1,75	1,70	1,59	1,39	1,37
16/10/2002	nq	2,35	2,07	1,71	1,67	1,56	1,39	1,37
23/10/2002	nq	2,32	2,05	1,69	1,65	1,54	1,39	1,37
30/10/2002	nq	2,32	2,04	1,68	1,64	1,54	1,39	1,37
06/11/2002	nq	2,32	2,04	1,68	1,64	1,54	1,39	1,37
13/11/2002	nq	2,32	2,04	1,66	1,61	1,51	1,36	1,34
20/11/2002	nq	2,32	2,04	1,66	1,61	1,51	1,36	1,34
27/11/2002	nq	2,32	2,04	1,66	1,61	1,51	1,36	1,34
04/12/2002	nq	2,35	2,07	1,67	1,61	1,51	1,36	1,34
11/12/2002	nq	2,40	2,12	1,70	1,61	1,49	1,34	1,32
18/12/2002	nq	2,45	2,17	1,72	1,61	1,47	1,32	1,30
MEDIA	nq	2,72	2,43	2,03	1,83	1,59	1,37	1,35

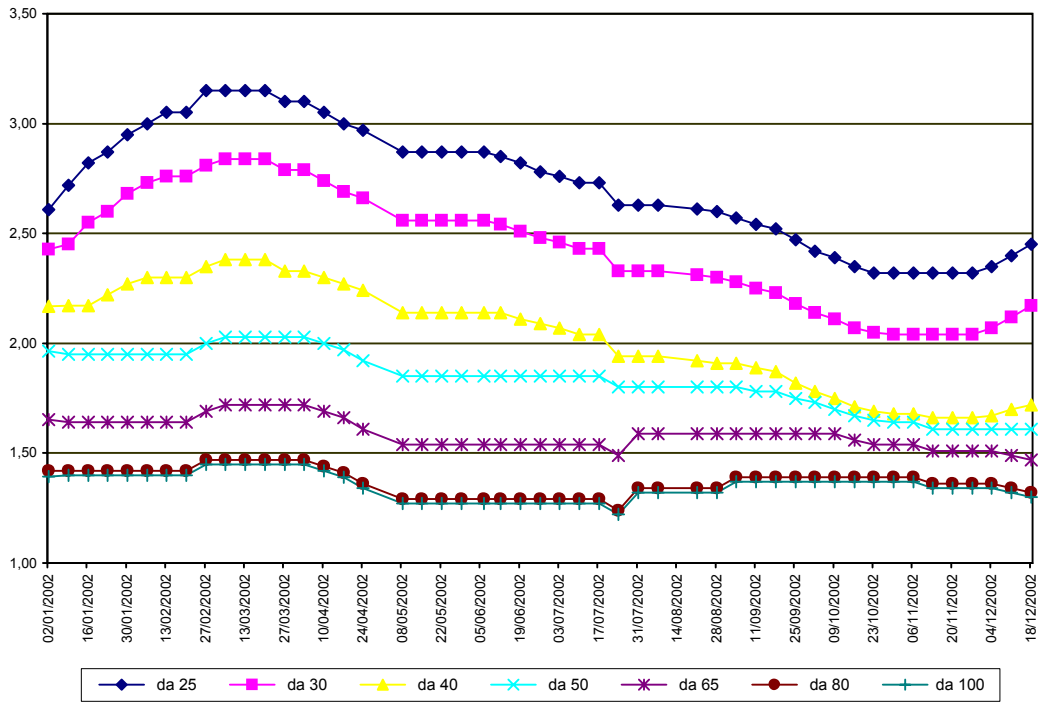
nq = non quotati

CREMONA 2002

SETTIMANE	SUINI DA MACELLO (€/Kg)								
	90/115	da 115	da 130	da 144	da 156	da 166	da 176	da 180	> 180
02/01/2002	nq	1,152	1,172	1,245	1,286	1,286	1,281	1,172	1,100
09/01/2002	nq	1,170	1,190	1,265	1,305	1,305	1,305	1,205	1,205
16/01/2002	nq	1,165	1,185	1,260	1,300	1,300	1,300	1,200	1,200
23/01/2002	nq	1,125	1,145	1,220	1,260	1,260	1,260	1,160	1,160
30/01/2002	nq	1,075	1,095	1,170	1,210	1,210	1,210	1,110	1,110
06/02/2002	nq	1,020	1,040	1,115	1,155	1,155	1,155	1,055	1,055
13/02/2002	nq	1,015	1,035	1,110	1,150	1,150	1,150	1,050	1,050
20/02/2002	nq	1,040	1,060	1,135	1,175	1,175	1,175	1,075	1,075
27/02/2002	nq	1,080	1,100	1,175	1,215	1,215	1,215	1,115	1,115
06/03/2002	nq	1,095	1,115	1,190	1,230	1,230	1,230	1,130	1,130
13/03/2002	nq	1,085	1,105	1,180	1,220	1,220	1,220	1,120	1,120
20/03/2002	nq	1,055	1,075	1,150	1,190	1,190	1,190	1,090	1,090
27/03/2002	nq	1,005	1,025	1,100	1,140	1,140	1,140	1,040	1,040
03/04/2002	nq	1,005	1,025	1,075	1,115	1,115	1,115	1,000	1,000
10/04/2002	nq	0,950	0,970	1,020	1,060	1,060	1,060	0,945	0,945
17/04/2002	nq	0,915	0,935	0,985	1,025	1,025	1,025	0,910	0,910
24/04/2002	nq	0,915	0,935	0,985	1,025	1,025	1,025	0,910	0,910
08/05/2002	nq	0,905	0,925	0,975	1,015	1,015	1,010	0,895	0,895
15/05/2002	nq	0,905	0,925	0,975	1,015	1,015	1,010	0,895	0,895
22/05/2002	nq	0,905	0,925	0,975	1,015	1,015	1,010	0,895	0,895
29/05/2002	nq	0,905	0,925	0,975	1,015	1,015	1,010	0,895	0,895
06/06/2002	nq	0,905	0,925	0,975	1,015	1,015	1,010	0,895	0,895
12/06/2002	nq	0,905	0,925	0,975	1,015	1,015	1,010	0,895	0,895
19/06/2002	nq	0,935	0,955	1,005	1,045	1,045	1,040	0,925	0,925
26/06/2002	nq	0,960	0,980	1,030	1,070	1,070	1,065	0,950	0,950
03/07/2002	nq	0,940	0,960	1,010	1,050	1,050	1,045	0,930	0,930
10/07/2002	nq	0,950	0,970	1,020	1,060	1,060	1,060	0,940	0,940
17/07/2002	nq	1,070	1,090	1,140	1,180	1,180	1,180	1,060	1,060
24/07/2002	nq	1,230	1,250	1,300	1,340	1,340	1,340	1,220	1,220
31/07/2002	nq	1,305	1,325	1,375	1,415	1,415	1,415	1,295	1,295
07/08/2002	nq	1,280	1,300	1,350	1,390	1,390	1,390	1,270	1,270
21/08/2002	nq	1,280	1,300	1,350	1,390	1,390	1,390	1,270	1,270
28/08/2002	nq	1,310	1,330	1,380	1,420	1,420	1,420	1,300	1,300
04/09/2002	nq	1,330	1,350	1,400	1,440	1,440	1,440	1,320	1,320
11/09/2002	nq	1,330	1,350	1,400	1,440	1,440	1,440	1,320	1,320
18/09/2002	nq	1,320	1,340	1,390	1,430	1,430	1,430	1,310	1,310
25/09/2002	nq	1,260	1,280	1,330	1,370	1,370	1,370	1,250	1,250
02/10/2002	nq	1,240	1,260	1,310	1,350	1,350	1,350	1,230	1,230
09/10/2002	nq	1,280	1,300	1,350	1,390	1,390	1,390	1,270	1,270
16/10/2002	nq	1,340	1,360	1,410	1,450	1,450	1,450	1,330	1,330
23/10/2002	nq	1,380	1,400	1,450	1,490	1,490	1,490	1,370	1,370
30/10/2002	nq	1,360	1,380	1,430	1,470	1,470	1,470	1,350	1,350
06/11/2002	nq	1,300	1,320	1,370	1,410	1,410	1,410	1,290	1,290
13/11/2002	nq	1,270	1,290	1,340	1,380	1,380	1,380	1,260	1,260
20/11/2002	nq	1,270	1,290	1,340	1,380	1,380	1,380	1,260	1,260
27/11/2002	nq	1,270	1,290	1,340	1,380	1,380	1,380	1,260	1,260
04/12/2002	nq	1,240	1,260	1,310	1,350	1,350	1,350	1,230	1,230
11/12/2002	nq	1,200	1,220	1,270	1,310	1,310	1,310	1,190	1,190
18/12/2002	nq	1,190	1,210	1,260	1,300	1,300	1,300	1,180	1,180
MEDIA	nq	1,125	1,145	1,202	1,242	1,242	1,241	1,127	1,126

nq = non quotati

CREMONA 2002
SUINI D'ALLEVAMENTO
 (Euro/Kg)



CREMONA 2002
SUINI DA MACELLO
 (Euro/Kg)

