

BRESCIA 2001

CAMERA DI COMMERCIO DI BRESCIA

Categoria: SUINI VIVI

Prezzi: (Franco Partenza) Per Kg peso vivo - IVA esclusa

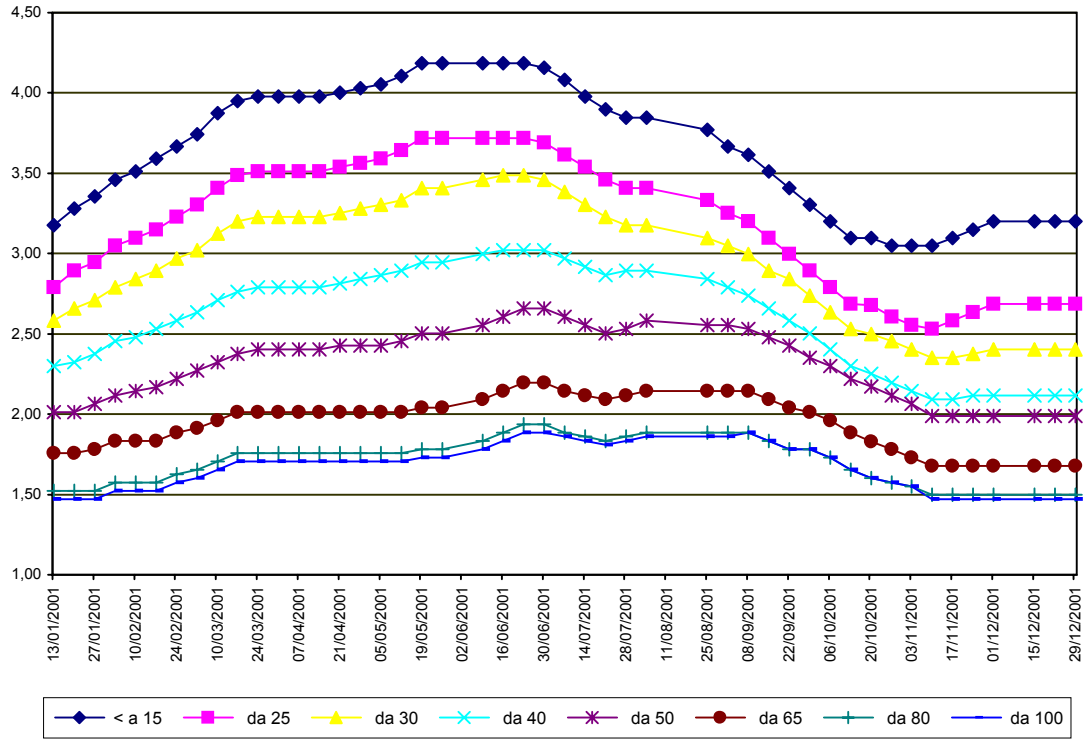
di Cosmino Giovanni Basile

SETTIMANE	SUINI D'ALLEVAMENTO €/Kg)							
	< a 15	da 25	da 30	da 40	da 50	da 65	da 80	da 100
13/01/2001	3,18	2,79	2,58	2,30	2,01	1,76	1,52	1,47
20/01/2001	3,28	2,89	2,66	2,32	2,01	1,76	1,52	1,47
27/01/2001	3,36	2,94	2,71	2,38	2,07	1,78	1,52	1,47
03/02/2001	3,46	3,05	2,79	2,45	2,12	1,83	1,58	1,52
10/02/2001	3,51	3,10	2,84	2,48	2,14	1,83	1,58	1,52
17/02/2001	3,59	3,15	2,89	2,53	2,17	1,83	1,58	1,52
24/02/2001	3,67	3,23	2,97	2,58	2,22	1,89	1,63	1,58
03/03/2001	3,74	3,31	3,02	2,63	2,27	1,91	1,65	1,60
10/03/2001	3,87	3,41	3,12	2,71	2,32	1,96	1,70	1,65
17/03/2001	3,95	3,49	3,20	2,76	2,38	2,01	1,76	1,70
24/03/2001	3,98	3,51	3,23	2,79	2,40	2,01	1,76	1,70
31/03/2001	3,98	3,51	3,23	2,79	2,40	2,01	1,76	1,70
07/04/2001	3,98	3,51	3,23	2,79	2,40	2,01	1,76	1,70
14/04/2001	3,98	3,51	3,23	2,79	2,40	2,01	1,76	1,70
21/04/2001	4,00	3,54	3,25	2,81	2,43	2,01	1,76	1,70
28/04/2001	4,03	3,56	3,28	2,84	2,43	2,01	1,76	1,70
05/05/2001	4,05	3,59	3,31	2,87	2,43	2,01	1,76	1,70
12/05/2001	4,11	3,64	3,33	2,89	2,45	2,01	1,76	1,70
19/05/2001	4,18	3,72	3,41	2,94	2,50	2,04	1,78	1,73
26/05/2001	4,18	3,72	3,41	2,94	2,50	2,04	1,78	1,73
09/06/2001	4,18	3,72	3,46	3,00	2,56	2,09	1,83	1,78
16/06/2001	4,18	3,72	3,49	3,02	2,61	2,14	1,89	1,83
23/06/2001	4,18	3,72	3,49	3,02	2,66	2,19	1,94	1,89
30/06/2001	4,16	3,69	3,46	3,02	2,66	2,19	1,94	1,89
07/07/2001	4,08	3,62	3,38	2,97	2,61	2,14	1,89	1,86
14/07/2001	3,98	3,54	3,31	2,92	2,56	2,12	1,86	1,83
21/07/2001	3,90	3,46	3,23	2,87	2,50	2,09	1,83	1,81
28/07/2001	3,85	3,41	3,18	2,89	2,53	2,12	1,86	1,83
04/08/2001	3,85	3,41	3,18	2,89	2,58	2,14	1,89	1,86
25/08/2001	3,77	3,33	3,10	2,84	2,56	2,14	1,89	1,86
01/09/2001	3,67	3,25	3,05	2,79	2,56	2,14	1,89	1,86
08/09/2001	3,62	3,20	3,00	2,74	2,53	2,14	1,89	1,89
15/09/2001	3,51	3,10	2,89	2,66	2,48	2,09	1,83	1,83
22/09/2001	3,41	3,00	2,84	2,58	2,43	2,04	1,78	1,78
29/09/2001	3,31	2,89	2,74	2,50	2,35	2,01	1,78	1,78
06/10/2001	3,20	2,79	2,63	2,40	2,30	1,96	1,73	1,73
13/10/2001	3,10	2,69	2,53	2,30	2,22	1,89	1,65	1,65
20/10/2001	3,10	2,68	2,50	2,25	2,17	1,83	1,60	1,60
27/10/2001	3,05	2,61	2,45	2,19	2,12	1,78	1,58	1,58
03/11/2001	3,05	2,56	2,40	2,14	2,07	1,73	1,55	1,55
10/11/2001	3,05	2,53	2,35	2,09	1,99	1,68	1,50	1,47
17/11/2001	3,10	2,58	2,35	2,09	1,99	1,68	1,50	1,47
24/11/2001	3,15	2,63	2,38	2,12	1,99	1,68	1,50	1,47
01/12/2001	3,20	2,69	2,40	2,12	1,99	1,68	1,50	1,47
15/12/2001	3,20	2,69	2,40	2,12	1,99	1,68	1,50	1,47
22/12/2001	3,20	2,69	2,40	2,12	1,99	1,68	1,50	1,47
29/12/2001	3,20	2,69	2,40	2,12	1,99	1,68	1,50	1,47
MEDIA	3,64	3,19	2,95	2,60	2,32	1,95	1,71	1,67

BRESCIA 2001

SETTIMANE	SUINI DA MACELLO (€/Kg)							
	90/115	115/130	130/144	144/156	156/176	176/180	180/185	> 185
13/01/2001	nq	1,405	1,456	1,493	1,503	1,400	1,348	1,281
20/01/2001	nq	1,374	1,425	1,462	1,472	1,369	1,348	1,281
27/01/2001	nq	1,451	1,503	1,539	1,549	1,446	1,425	1,358
03/02/2001	nq	1,467	1,518	1,555	1,565	1,498	1,477	1,410
10/02/2001	nq	1,467	1,518	1,555	1,565	1,498	1,477	1,410
17/02/2001	nq	1,472	1,524	1,560	1,570	1,503	1,482	1,415
24/02/2001	nq	1,513	1,565	1,601	1,611	1,544	1,508	1,441
03/03/2001	nq	1,539	1,591	1,627	1,637	1,570	1,534	1,467
10/03/2001	nq	1,617	1,668	1,704	1,715	1,647	1,611	1,544
17/03/2001	nq	1,658	1,709	1,746	1,756	1,689	1,653	1,586
24/03/2001	nq	1,596	1,647	1,684	1,694	1,627	1,591	1,524
31/03/2001	nq	1,534	1,586	1,622	1,632	1,565	1,529	1,462
07/04/2001	nq	1,482	1,534	1,570	1,580	1,513	1,477	1,410
14/04/2001	nq	1,487	1,539	1,575	1,586	1,518	1,482	1,415
21/04/2001	nq	1,493	1,544	1,580	1,591	1,524	1,482	1,415
28/04/2001	nq	1,493	1,544	1,580	1,591	1,524	1,482	1,415
05/05/2001	nq	1,467	1,518	1,555	1,565	1,498	1,456	1,389
12/05/2001	nq	1,451	1,503	1,539	1,549	1,482	1,441	1,374
19/05/2001	nq	1,425	1,477	1,513	1,524	1,456	1,415	1,348
26/05/2001	nq	1,410	1,462	1,498	1,508	1,441	1,400	1,332
09/06/2001	nq	1,462	1,477	1,513	1,524	1,456	1,415	1,348
16/06/2001	nq	1,555	1,570	1,606	1,617	1,549	1,508	1,441
23/06/2001	nq	1,555	1,570	1,627	1,617	1,549	1,508	1,441
30/06/2001	nq	1,518	1,534	1,591	1,580	1,513	1,472	1,405
07/07/2001	nq	1,441	1,456	1,513	1,503	1,436	1,394	1,327
14/07/2001	nq	1,389	1,451	1,482	1,482	1,415	1,374	1,307
21/07/2001	nq	1,467	1,529	1,560	1,560	1,493	1,451	1,384
28/07/2001	nq	1,544	1,606	1,637	1,637	1,544	1,503	1,436
04/08/2001	nq	1,570	1,622	1,653	1,658	1,555	1,513	1,446
25/08/2001	nq	1,549	1,601	1,632	1,637	1,534	1,493	1,425
01/09/2001	nq	1,560	1,611	1,642	1,647	1,544	1,503	1,436
08/09/2001	nq	1,570	1,622	1,653	1,658	1,555	1,513	1,446
15/09/2001	nq	1,555	1,606	1,637	1,642	1,539	1,498	1,431
22/09/2001	nq	1,529	1,580	1,611	1,617	1,513	1,472	1,405
29/09/2001	nq	1,518	1,570	1,601	1,606	1,503	1,462	1,394
06/10/2001	nq	1,482	1,534	1,565	1,570	1,467	1,425	1,358
13/10/2001	nq	1,405	1,456	1,487	1,493	1,389	1,348	1,281
20/10/2001	nq	1,379	1,431	1,462	1,467	1,363	1,332	1,281
27/10/2001	nq	1,327	1,379	1,410	1,415	1,312	1,281	1,229
03/11/2001	nq	1,301	1,353	1,384	1,389	1,286	1,255	1,203
10/11/2001	nq	1,255	1,307	1,338	1,343	1,239	1,209	1,157
17/11/2001	nq	1,296	1,358	1,389	1,394	1,291	1,260	1,209
24/11/2001	nq	1,312	1,374	1,405	1,410	1,307	1,276	1,224
01/12/2001	nq	1,265	1,327	1,358	1,363	1,260	1,229	1,178
15/12/2001	nq	1,188	1,250	1,281	1,286	1,183	1,178	1,126
22/12/2001	nq	1,188	1,260	1,291	1,296	1,193	1,188	1,136
29/12/2001	nq	1,188	1,260	1,291	1,296	1,193	1,188	1,136
MEDIA	nq	1,450	1,501	1,536	1,542	1,457	1,423	1,359

BRESCIA 2001
SUINI D'ALLEVAMENTO
 (Euro/Kg)



BRESCIA 2001
SUINI DA MACELLO
 (Euro/Kg)

