

MODENA 1990

CAMERA DI COMMERCIO DI MODENA

Categoria: SUINI VIVI

Prezzi: (Franco Partenza) Per Kg peso vivo - IVA esclusa

di Cosmino Giovanni Basile

SETTIMANE	SUINI D'ALLEVAMENTO (€/Kg)							
	< a 15	da 25	da 30	da 40	da 50	da 65	da 80	da 100
08/01/1990	2,66	2,07	1,95	1,73	1,51	1,32	1,21	0,00
15/01/1990	2,66	2,07	1,95	1,73	1,51	1,32	1,21	0,00
22/01/1990	2,74	2,12	2,00	1,73	1,51	1,32	1,21	0,00
29/01/1990	2,76	2,14	2,01	1,73	1,50	1,29	1,19	0,00
05/02/1990	2,76	2,14	2,01	1,73	1,50	1,29	1,19	0,00
12/02/1990	2,78	2,16	2,03	1,73	1,47	1,25	1,15	0,00
19/02/1990	2,79	2,17	2,04	1,73	1,46	1,24	1,14	0,00
26/02/1990	2,79	2,17	2,04	1,73	1,44	1,19	1,08	1,03
05/03/1990	2,76	2,14	2,01	1,70	1,39	1,14	1,03	0,98
12/03/1990	2,74	2,12	1,99	1,68	1,37	1,11	1,01	0,96
19/03/1990	2,74	2,14	2,01	1,70	1,42	1,16	1,03	0,98
26/03/1990	2,76	2,17	2,07	1,78	1,50	1,24	1,08	1,03
02/04/1990	2,79	2,19	2,09	1,83	1,55	1,31	1,15	1,08
09/04/1990	2,81	2,22	2,12	1,89	1,63	1,38	1,23	1,14
17/04/1990	2,84	2,25	2,16	1,94	1,68	1,44	1,27	1,17
23/04/1990	2,87	2,27	2,21	1,99	1,73	1,49	1,32	1,20
30/04/1990	2,89	2,32	2,26	2,04	1,78	1,54	1,37	1,22
07/05/1990	2,89	2,32	2,26	2,04	1,78	1,54	1,37	1,22
14/05/1990	2,89	2,32	2,26	2,04	1,78	1,54	1,37	1,22
21/05/1990	2,86	2,29	2,23	2,01	1,76	1,51	1,34	1,19
28/05/1990	2,84	2,27	2,22	2,01	1,76	1,51	1,32	1,16
04/06/1990	2,84	2,27	2,22	2,01	1,76	1,51	1,32	1,16
11/06/1990	2,84	2,27	2,22	2,01	1,76	1,51	1,32	1,16
18/06/1990	2,84	2,27	2,24	2,03	1,78	1,54	1,34	1,19
25/06/1990	2,86	2,29	2,25	2,05	1,80	1,55	1,36	1,20
02/07/1990	2,84	2,27	2,24	2,03	1,78	1,54	1,34	1,19
09/07/1990	2,79	2,22	2,18	1,99	1,76	1,51	1,32	1,14
16/07/1990	2,76	2,19	2,16	1,96	1,76	1,51	1,32	1,16
23/07/1990	2,74	2,17	2,14	1,96	1,76	1,51	1,32	1,16
30/07/1990	2,71	2,14	2,12	1,96	1,76	1,51	1,32	1,16
06/08/1990	2,69	2,12	2,09	1,94	1,73	1,49	1,29	1,16
20/08/1990	2,63	2,09	2,07	1,91	1,73	1,49	1,29	1,16
27/08/1990	2,58	2,04	2,01	1,86	1,68	1,45	1,27	1,16
03/09/1990	2,53	1,99	1,96	1,81	1,63	1,39	1,24	1,14
10/09/1990	2,45	1,91	1,89	1,76	1,58	1,34	1,19	1,11
17/09/1990	2,38	1,83	1,81	1,68	1,50	1,29	1,16	1,11
24/09/1990	2,32	1,81	1,78	1,65	1,50	1,29	1,16	1,11
01/10/1990	2,30	1,78	1,76	1,63	1,47	1,27	1,16	1,16
08/10/1990	2,30	1,76	1,73	1,60	1,47	1,27	1,19	1,21
15/10/1990	2,27	1,76	1,73	1,60	1,47	1,27	1,19	1,21
22/10/1990	2,25	1,73	1,70	1,58	1,45	1,24	1,16	1,19
29/10/1990	2,19	1,68	1,65	1,52	1,39	1,19	1,11	1,14
05/11/1990	2,14	1,63	1,60	1,47	1,37	1,16	1,08	1,11
12/11/1990	2,12	1,60	1,58	1,42	1,32	1,11	1,03	1,06
19/11/1990	2,07	1,55	1,52	1,39	1,27	1,08	1,01	1,01
26/11/1990	2,01	1,50	1,47	1,34	1,21	1,03	0,98	0,98
03/12/1990	1,96	1,45	1,42	1,29	1,16	1,01	0,96	0,96
10/12/1990	1,94	1,42	1,39	1,27	1,14	0,98	0,93	0,93
17/12/1990	1,94	1,42	1,39	1,27	1,14	0,98	0,93	0,93
31/12/1990	1,94	1,42	1,39	1,27	1,14	0,98	0,93	0,93
MEDIA	2,58	2,01	1,95	1,76	1,54	1,32	1,19	ns

nq = non quotati

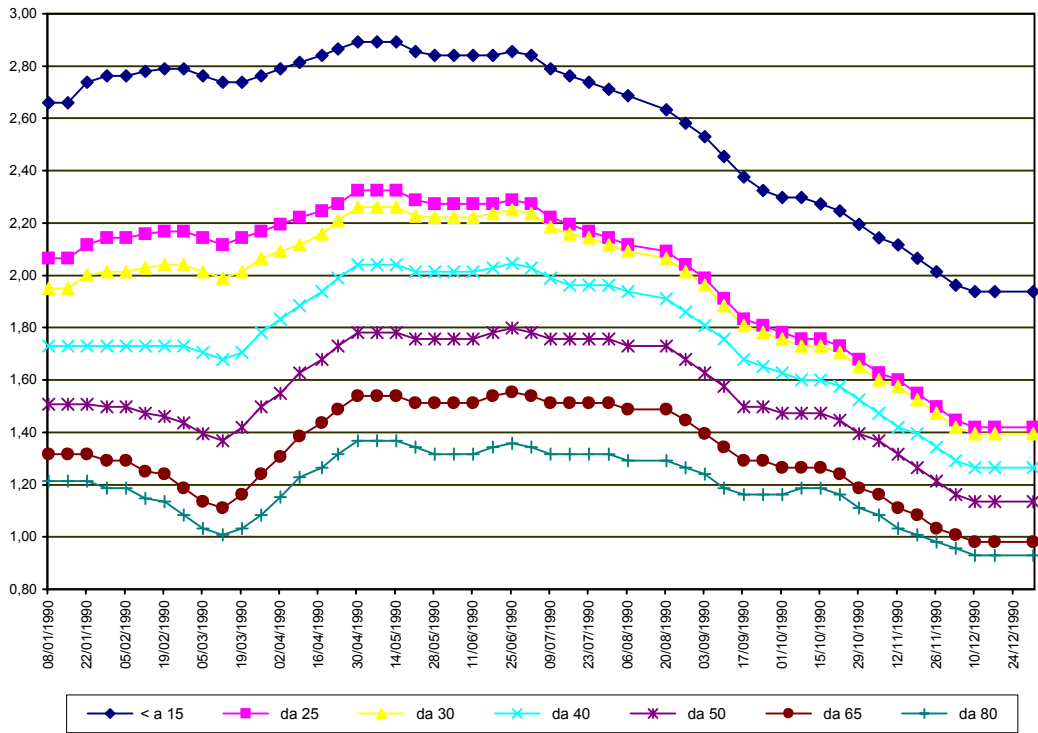
ns = non significativi

MODENA 1990

SETTIMANE	SUINI DA MACELLO (€/Kg)					
	90/115	115/130	130/145	145/160	160/180	> 180
08/01/1990	1,188	1,234	1,307	1,353	1,374	1,317
15/01/1990	1,167	1,214	1,291	1,353	1,374	1,317
22/01/1990	1,121	1,178	1,260	1,332	1,353	1,296
29/01/1990	1,085	1,141	1,214	1,286	1,307	1,250
05/02/1990	1,074	1,116	1,183	1,245	1,265	1,209
12/02/1990	1,048	1,085	1,136	1,193	1,214	1,162
19/02/1990	1,017	1,043	1,085	1,147	1,162	1,110
26/02/1990	0,971	0,997	1,028	1,090	1,105	1,054
05/03/1990	0,930	0,945	0,976	1,028	1,043	0,992
12/03/1990	0,930	0,945	0,966	1,012	1,028	0,976
19/03/1990	0,966	0,981	0,986	1,033	1,048	0,997
26/03/1990	1,028	1,038	1,043	1,079	1,095	1,043
02/04/1990	1,069	1,074	1,074	1,110	1,126	1,074
09/04/1990	1,069	1,074	1,074	1,110	1,126	1,074
17/04/1990	1,069	1,074	1,074	1,110	1,126	1,074
23/04/1990	1,121	1,126	1,126	1,131	1,147	1,095
30/04/1990	1,141	1,147	1,147	1,147	1,167	1,116
07/05/1990	1,126	1,131	1,131	1,136	1,152	1,100
14/05/1990	1,105	1,100	1,100	1,105	1,121	1,069
21/05/1990	1,085	1,069	1,069	1,074	1,090	1,038
28/05/1990	1,085	1,054	1,054	1,059	1,074	1,023
04/06/1990	1,116	1,079	1,079	1,085	1,100	1,048
11/06/1990	1,126	1,085	1,085	1,105	1,105	1,054
18/06/1990	1,126	1,085	1,085	1,090	1,105	1,054
25/06/1990	1,126	1,085	1,085	1,090	1,105	1,054
02/07/1990	1,105	1,048	1,048	1,054	1,069	1,017
09/07/1990	1,085	1,012	1,007	1,017	1,033	0,981
16/07/1990	1,110	1,038	1,038	1,043	1,059	1,007
23/07/1990	1,214	1,116	1,116	1,121	1,136	1,085
30/07/1990	1,224	1,136	1,136	1,141	1,157	1,105
06/08/1990	1,224	1,136	1,136	1,141	1,157	1,105
20/08/1990	1,250	1,136	1,136	1,141	1,157	1,105
27/08/1990	1,250	1,136	1,136	1,141	1,157	1,105
03/09/1990	1,239	1,121	1,121	1,136	1,152	1,090
10/09/1990	1,224	1,105	1,105	1,121	1,136	1,074
17/09/1990	1,214	1,090	1,090	1,105	1,121	1,059
24/09/1990	1,224	1,105	1,105	1,121	1,136	1,074
01/10/1990	1,239	1,136	1,136	1,152	1,167	1,105
08/10/1990	1,239	1,152	1,162	1,178	1,193	1,131
15/10/1990	1,224	1,147	1,157	1,172	1,188	1,126
22/10/1990	1,188	1,121	1,131	1,147	1,162	1,100
29/10/1990	1,136	1,090	1,100	1,116	1,131	1,069
05/11/1990	1,121	1,079	1,095	1,116	1,131	1,069
12/11/1990	1,095	1,064	1,085	1,105	1,121	1,059
19/11/1990	1,069	1,043	1,069	1,090	1,105	1,043
26/11/1990	1,059	1,038	1,069	1,090	1,105	1,043
03/12/1990	1,023	1,007	1,043	1,064	1,079	1,017
10/12/1990	1,002	0,986	1,023	1,043	1,059	0,997
17/12/1990	0,981	0,966	1,002	1,023	1,038	0,976
31/12/1990	0,981	0,966	1,002	1,023	1,038	0,976
MEDIA	1,112	1,081	1,098	1,122	1,138	1,082

nq = non quotati

MODENA 1990
SUINI D'ALLEVAMENTO
 (Euro/Kg)



MODENA 1990
SUINI DA MACELLO
 (Euro/Kg)

