



12/2011

Mercato  
Mercati nazionali

5.17.2

ERSAF  
ENTE REGIONALE PER I SERVIZI  
ALL'AGRICOLTURA E ALLE FORESTE

## COMMISSIONE UNICA NAZIONALE 2011

SEDE PRESSO LA CAMERA DI COMMERCIO DI MANTOVA

Categoria: SUINI VIVI

Prezzi: (Franco Partenza) Per Kg peso vivo - IVA esclusa

di Cosmino Giovanni Basile

SETTIMANE	SUINI DA MACELLO (€/Kg)							
	CIRCUITO NON TUTELATO							
	90/115	115/130	130/144	144/152	152/160	160/176	176/180	> 180
05/01/2011	nq	nq	nq	nq	nq	nq	nq	nq
13/01/2011	nq	1,023	1,038	1,068	1,088	1,118	1,048	1,018
20/01/2011	nq	1,023	1,038	1,068	1,088	1,118	1,048	1,018
27/01/2011	nq	1,040	1,055	1,085	1,105	1,135	1,065	1,035
03/02/2011	nq	1,070	1,085	1,115	1,135	1,165	1,095	1,065
10/02/2011	nq	1,115	1,130	1,160	1,180	1,210	1,140	1,110
17/02/2011	nq	1,117	1,132	1,162	1,182	1,212	1,142	1,112
24/02/2011	nq	1,092	1,107	1,137	1,157	1,187	1,117	1,087
03/03/2011	nq	nq	nq	nq	nq	nq	nq	nq
10/03/2011	nq	1,058	1,073	1,103	1,123	1,153	1,083	1,053
17/03/2011	nq	1,066	1,081	1,111	1,131	1,161	1,091	1,061
24/03/2011	nq	1,067	1,082	1,112	1,132	1,162	1,092	1,062
31/03/2011	nq	1,064	1,078	1,108	1,128	1,158	1,088	1,058
07/04/2011	nq	1,054	1,068	1,098	1,118	1,148	1,078	1,048
14/04/2011	nq	1,074	1,088	1,118	1,138	1,168	1,098	1,068
21/04/2011	nq	1,110	1,125	1,155	1,175	1,205	1,135	1,105
28/04/2011	nq	1,140	1,155	1,185	1,205	1,235	1,165	1,135
05/05/2011	nq	1,148	1,163	1,193	1,213	1,243	1,173	1,143
12/05/2011	nq	nq	nq	nq	nq	nq	nq	nq
19/05/2011	nq	1,122	1,137	1,167	1,187	1,217	1,147	1,117
26/05/2011	nq	1,117	1,132	1,162	1,182	1,212	1,142	1,112
02/06/2011	nq	nq	nq	nq	nq	nq	nq	nq
09/06/2011	nq	1,100	1,115	1,145	1,165	1,195	1,125	1,095
16/06/2011	nq	1,118	1,133	1,163	1,183	1,213	1,143	1,113
23/06/2011	nq	1,145	1,160	1,190	1,210	1,240	1,170	1,140
30/06/2011	nq	1,149	1,164	1,194	1,214	1,244	1,174	1,144
07/07/2011	nq	nq	nq	nq	nq	nq	nq	nq
14/07/2011	nq	nq	nq	nq	nq	nq	nq	nq
21/07/2011	nq	1,155	1,184	1,214	1,234	1,264	1,194	1,164
28/07/2011	nq	nq	nq	nq	nq	nq	nq	nq
04/08/2011	nq	1,201	1,216	1,246	1,266	1,296	1,226	1,196
11/08/2011	nq	1,237	1,252	1,282	1,302	1,332	1,262	1,232
18/08/2011	nq	1,243	1,258	1,288	1,308	1,338	1,268	1,238
25/08/2011	nq	1,243	1,258	1,288	1,308	1,338	1,268	1,238
01/09/2011	nq	1,245	1,260	1,290	1,310	1,340	1,270	1,240
08/09/2011	nq	nq	nq	nq	nq	nq	nq	nq
15/09/2011	nq	1,248	1,263	1,293	1,313	1,343	1,273	1,243
22/09/2011	nq	1,268	1,283	1,313	1,333	1,363	1,293	1,263
29/09/2011	nq	1,266	1,281	1,311	1,331	1,361	1,291	1,261
06/10/2011	nq	1,266	1,281	1,311	1,331	1,361	1,291	1,261
13/10/2011	nq	1,266	1,281	1,311	1,331	1,361	1,291	1,261
20/10/2011	nq	1,274	1,289	1,319	1,339	1,369	1,299	1,269
27/10/2011	nq	1,281	1,296	1,326	1,346	1,376	1,306	1,276
03/11/2011	nq	1,288	1,303	1,333	1,353	1,383	1,313	1,283
10/11/2011	nq	1,289	1,304	1,334	1,354	1,384	1,314	1,284
17/11/2011	nq	nq	nq	nq	nq	nq	nq	nq
24/11/2011	nq	1,268	1,283	1,313	1,333	1,363	1,293	1,263
01/12/2011	nq	1,252	1,267	1,297	1,317	1,347	1,277	1,247
08/12/2011	nq	1,237	1,252	1,282	1,302	1,332	1,262	1,232
15/12/2011	nq	1,214	1,229	1,259	1,279	1,309	1,239	1,209
22/12/2011	nq	1,189	1,204	1,234	1,254	1,284	1,214	1,184
29/12/2011	nq	1,189	1,204	1,234	1,254	1,284	1,214	1,184
<b>MEDIA</b>	<b>nq</b>	<b>1,166</b>	<b>1,181</b>	<b>1,211</b>	<b>1,231</b>	<b>1,261</b>	<b>1,191</b>	<b>1,161</b>

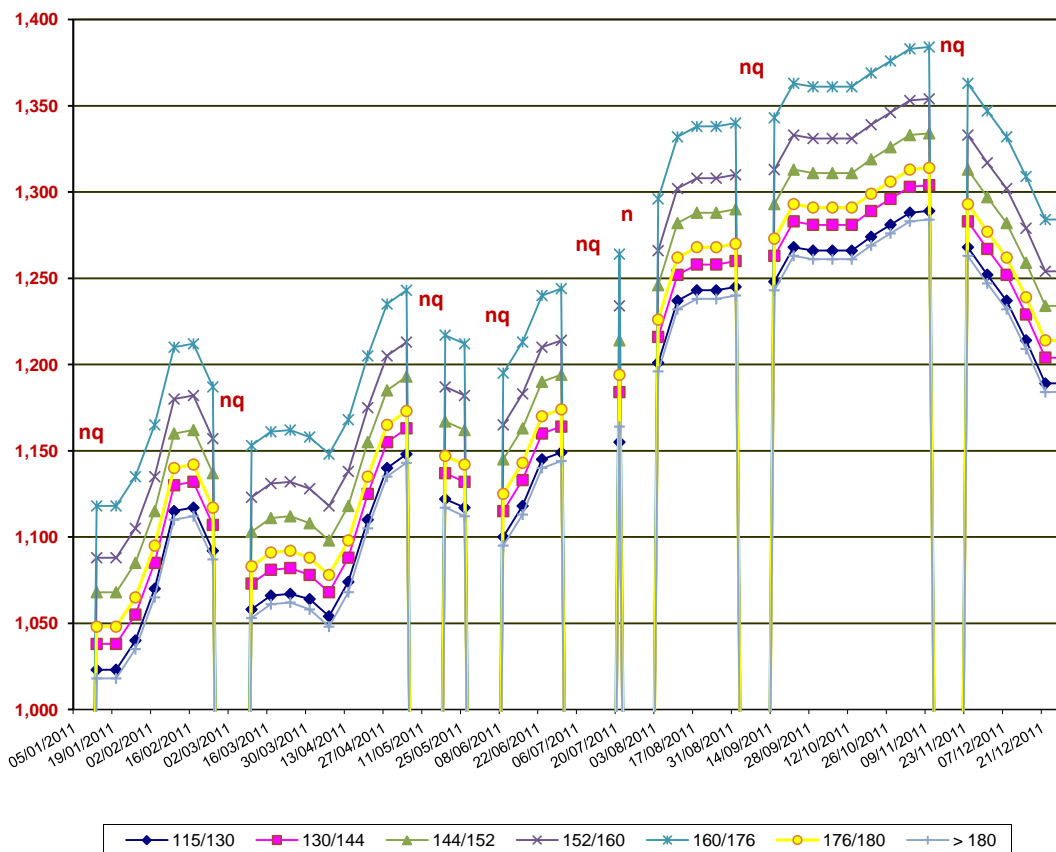
nq = non quotati

**COMMISSIONE UNICA NAZIONALE 2011**

SETTIMANE	SUINI DA MACELLO (€/Kg)		
	CIRCUITO TUTELATO		
	144/152	152/160	160/176
05/01/2011	nq	nq	nq
13/01/2011	1,175	1,195	1,225
20/01/2011	1,175	1,195	1,225
27/01/2011	1,195	1,215	1,245
03/02/2011	1,225	1,245	1,275
10/02/2011	1,270	1,290	1,320
17/02/2011	1,272	1,292	1,322
24/02/2011	1,247	1,267	1,297
03/03/2011	nq	nq	nq
10/03/2011	1,215	1,235	1,265
17/03/2011	1,223	1,243	1,273
24/03/2011	1,224	1,244	1,274
31/03/2011	1,220	1,240	1,270
07/04/2011	1,213	1,233	1,263
14/04/2011	1,233	1,253	1,283
21/04/2011	1,270	1,290	1,320
28/04/2011	1,300	1,320	1,350
05/05/2011	1,308	1,328	1,358
12/05/2011	nq	nq	nq
19/05/2011	1,293	1,313	1,343
26/05/2011	1,298	1,318	1,348
02/06/2011	nq	nq	nq
09/06/2011	1,287	1,307	1,337
16/06/2011	1,310	1,330	1,360
23/06/2011	1,340	1,360	1,390
30/06/2011	1,350	1,370	1,400
07/07/2011	nq	nq	nq
14/07/2011	nq	nq	nq
21/07/2011	1,375	1,395	1,425
28/07/2011	nq	nq	nq
04/08/2011	1,410	1,430	1,460
11/08/2011	1,452	1,472	1,502
18/08/2011	1,465	1,485	1,515
25/08/2011	1,465	1,485	1,518
01/09/2011	1,465	1,485	1,518
08/09/2011	nq	nq	nq
15/09/2011	1,477	1,497	1,530
22/09/2011	1,477	1,507	1,550
29/09/2011	1,477	1,507	1,550
06/10/2011	1,477	1,507	1,552
13/10/2011	1,477	1,507	1,554
20/10/2011	1,477	1,507	1,562
27/10/2011	1,480	1,510	1,569
03/11/2011	1,487	1,517	1,576
10/11/2011	1,487	1,517	1,577
17/11/2011	nq	nq	nq
24/11/2011	1,466	1,496	1,556
01/12/2011	1,450	1,480	1,540
08/12/2011	1,435	1,465	1,525
15/12/2011	1,412	1,442	1,502
22/12/2011	1,387	1,417	1,477
29/12/2011	1,387	1,417	1,477
<b>MEDIA</b>	<b>1,352</b>	<b>1,375</b>	<b>1,413</b>

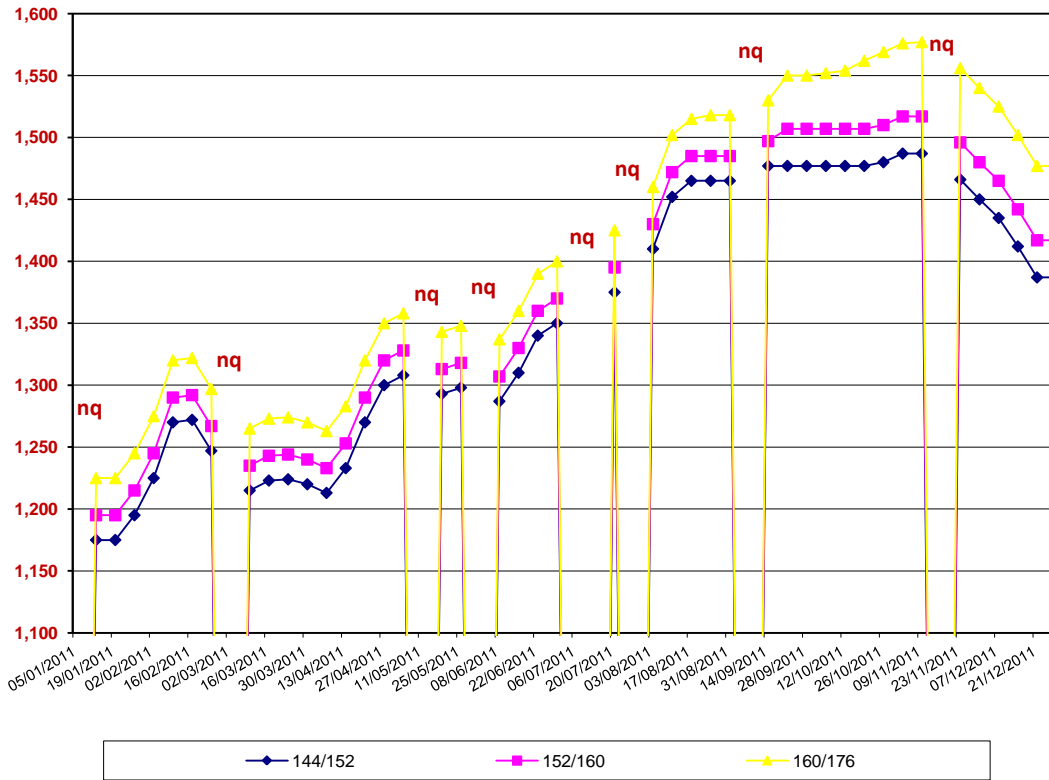
*nq = non quotati*

**COMMISSIONE UNICA NAZIONALE 2011**  
**TREND SUINI**  
**CIRCUITO NON TUTELATO**  
 (Euro/Kg)



*nq = non quotati*

**COMMISSIONE UNICA NAZIONALE 2011**  
**TREND SUINI**  
**CIRCUITO TUTELATO**  
 (Euro/Kg)



*nq = non quotati*