

Mercato
Mercati nazionali

5.11.15.2

ERSAF
ENTE REGIONALE PER I SERVIZI
ALL'AGRICOLTURA E ALLE FORESTE

PERUGIA 2010

CAMERA DI COMMERCIO DI PERUGIA

Categoria: SUINI VIVI

Prezzi: (Franco Partenza) Per Kg peso vivo - IVA esclusa

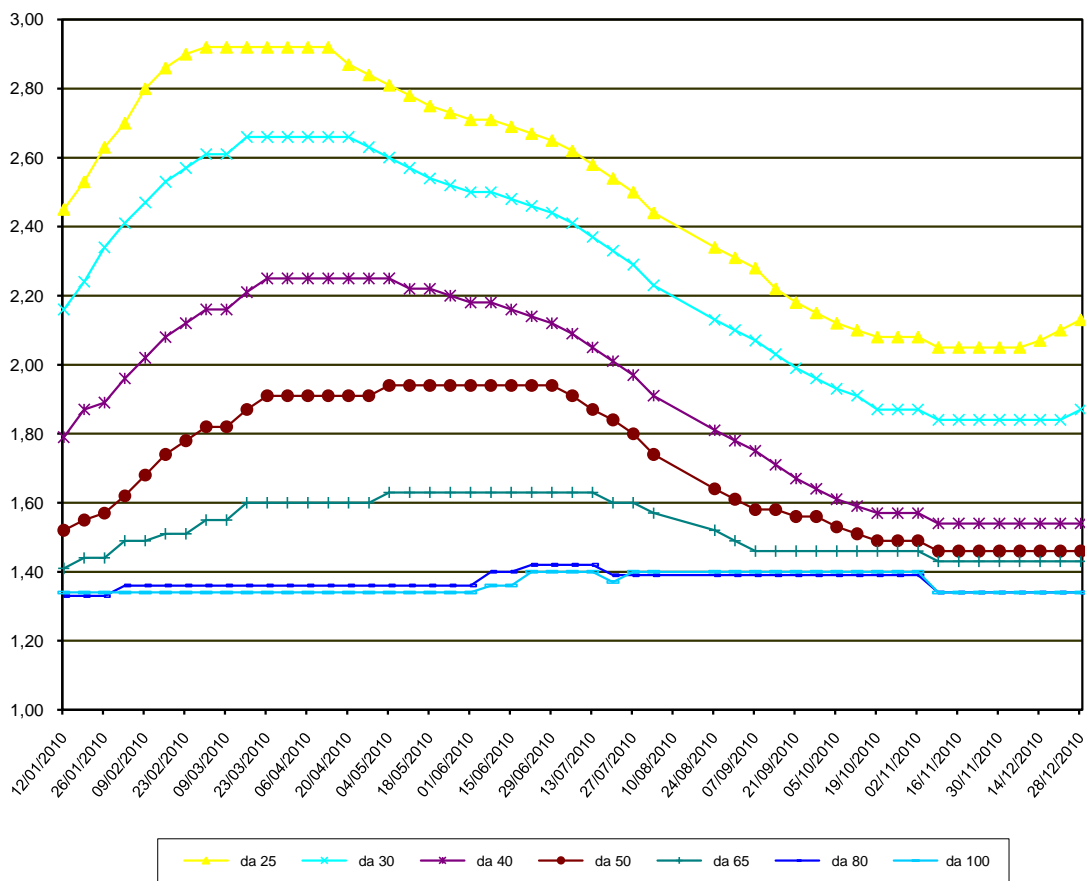
di Cosmino Giovanni Basile

SETTIMANE	SUINI D'ALLEVAMENTO (€/Kg)								
	da 6	da 15	da 25	da 30	da 40	da 50	da 65	da 80	da 100
12/01/2010	5,97	3,56	2,45	2,16	1,79	1,52	1,41	1,33	1,34
19/01/2010	6,05	3,64	2,53	2,24	1,87	1,55	1,44	1,33	1,34
26/01/2010	6,25	3,74	2,63	2,34	1,89	1,57	1,44	1,33	1,34
02/02/2010	6,35	3,81	2,70	2,41	1,96	1,62	1,49	1,36	1,34
09/02/2010	6,45	3,87	2,80	2,47	2,02	1,68	1,49	1,36	1,34
16/02/2010	6,55	3,93	2,86	2,53	2,08	1,74	1,51	1,36	1,34
23/02/2010	6,58	3,96	2,90	2,57	2,12	1,78	1,51	1,36	1,34
02/03/2010	6,58	3,96	2,92	2,61	2,16	1,82	1,55	1,36	1,34
09/03/2010	6,58	3,96	2,92	2,61	2,16	1,82	1,55	1,36	1,34
16/03/2010	6,53	3,96	2,92	2,66	2,21	1,87	1,60	1,36	1,34
23/03/2010	6,53	3,96	2,92	2,66	2,25	1,91	1,60	1,36	1,34
30/03/2010	6,53	3,96	2,92	2,66	2,25	1,91	1,60	1,36	1,34
06/04/2010	6,53	3,96	2,92	2,66	2,25	1,91	1,60	1,36	1,34
13/04/2010	6,53	3,96	2,92	2,66	2,25	1,91	1,60	1,36	1,34
20/04/2010	6,48	3,91	2,87	2,66	2,25	1,91	1,60	1,36	1,34
27/04/2010	6,45	3,88	2,84	2,63	2,25	1,91	1,60	1,36	1,34
04/05/2010	6,40	3,83	2,81	2,60	2,25	1,94	1,63	1,36	1,34
11/05/2010	6,37	3,80	2,78	2,57	2,22	1,94	1,63	1,36	1,34
18/05/2010	6,27	3,77	2,75	2,54	2,22	1,94	1,63	1,36	1,34
25/05/2010	6,07	3,69	2,73	2,52	2,20	1,94	1,63	1,36	1,34
01/06/2010	6,02	3,67	2,71	2,50	2,18	1,94	1,63	1,36	1,34
08/06/2010	5,96	3,67	2,71	2,50	2,18	1,94	1,63	1,40	1,36
15/06/2010	5,94	3,65	2,69	2,48	2,16	1,94	1,63	1,40	1,36
22/06/2010	5,92	2,63	2,67	2,46	2,14	1,94	1,63	1,42	1,40
29/06/2010	5,90	2,61	2,65	2,44	2,12	1,94	1,63	1,42	1,40
06/07/2010	5,87	2,58	2,62	2,41	2,09	1,91	1,63	1,42	1,40
13/07/2010	5,83	3,54	2,58	2,37	2,05	1,87	1,63	1,42	1,40
20/07/2010	5,79	3,50	2,54	2,33	2,01	1,84	1,60	1,39	1,37
27/07/2010	5,75	3,46	2,50	2,29	1,97	1,80	1,60	1,39	1,40
03/08/2010	5,65	3,43	2,44	2,23	1,91	1,74	1,57	1,39	1,40
24/08/2010	5,35	3,33	2,34	2,13	1,81	1,64	1,52	1,39	1,40
31/08/2010	5,32	3,30	2,31	2,10	1,78	1,61	1,49	1,39	1,40
07/09/2010	5,29	3,27	2,28	2,07	1,75	1,58	1,46	1,39	1,40
14/09/2010	5,23	3,21	2,22	2,03	1,71	1,58	1,46	1,39	1,40
21/09/2010	5,19	3,17	2,18	1,99	1,67	1,56	1,46	1,39	1,40
28/09/2010	5,16	3,14	2,15	1,96	1,64	1,56	1,46	1,39	1,40
05/10/2010	5,13	3,11	2,12	1,93	1,61	1,53	1,46	1,39	1,40
12/10/2010	5,13	3,11	2,10	1,91	1,59	1,51	1,46	1,39	1,40
19/10/2010	5,13	3,11	2,08	1,87	1,57	1,49	1,46	1,39	1,40
26/10/2010	5,13	3,11	2,08	1,87	1,57	1,49	1,46	1,39	1,40
02/11/2010	5,13	3,11	2,08	1,87	1,57	1,49	1,46	1,39	1,40
09/11/2010	5,13	3,11	2,05	1,84	1,54	1,46	1,43	1,34	1,34
16/11/2010	5,13	3,11	2,05	1,84	1,54	1,46	1,43	1,34	1,34
23/11/2010	5,13	3,11	2,05	1,84	1,54	1,46	1,43	1,34	1,34
30/11/2010	5,13	3,11	2,05	1,84	1,54	1,46	1,43	1,34	1,34
07/12/2010	5,13	3,11	2,05	1,84	1,54	1,46	1,43	1,34	1,34
14/12/2010	5,23	3,16	2,07	1,84	1,54	1,46	1,43	1,34	1,34
21/12/2010	5,26	3,19	2,10	1,84	1,54	1,46	1,43	1,34	1,34
28/12/2010	5,36	3,22	2,13	1,87	1,54	1,46	1,43	1,34	1,34
MEDIA	5,82	3,47	2,50	2,27	1,92	1,71	1,53	1,37	1,36

PERUGIA 2010

SETTIMANE	SUINI DA MACELLO (€/Kg)							
	90/115	115/130	130/144	144/156	156/176	176/180	180/185	> 185
12/01/2010	1,330	1,150	1,160	1,200	1,250	1,230	1,200	1,170
19/01/2010	1,350	1,170	1,180	1,220	1,270	1,250	1,220	1,190
26/01/2010	1,350	1,170	1,180	1,220	1,270	1,250	1,220	1,190
02/02/2010	1,330	1,150	1,160	1,200	1,250	1,230	1,200	1,170
09/02/2010	1,330	1,150	1,160	1,200	1,250	1,230	1,200	1,170
16/02/2010	1,330	1,150	1,160	1,200	1,250	1,230	1,200	1,170
23/02/2010	1,310	1,130	1,140	1,180	1,230	1,210	1,180	1,150
02/03/2010	1,290	1,110	1,120	1,160	1,210	1,190	1,160	1,130
09/03/2010	1,260	1,080	1,090	1,130	1,180	1,160	1,130	1,100
16/03/2010	1,260	1,050	1,060	1,100	1,150	1,130	1,100	1,070
23/03/2010	1,260	1,050	1,060	1,100	1,150	1,130	1,100	1,070
30/03/2010	1,260	1,050	1,060	1,100	1,150	1,130	1,100	1,070
06/04/2010	1,260	1,050	1,060	1,100	1,150	1,130	1,100	1,070
13/04/2010	1,250	1,040	1,050	1,090	1,140	1,120	1,090	1,060
20/04/2010	1,230	1,020	1,030	1,070	1,120	1,120	1,070	1,040
27/04/2010	1,230	1,000	1,010	1,050	1,100	1,080	1,050	1,020
04/05/2010	1,230	1,000	1,010	1,050	1,100	1,080	1,050	1,020
11/05/2010	1,230	1,000	1,010	1,050	1,100	1,080	1,050	1,020
18/05/2010	1,230	1,000	1,010	1,050	1,100	1,080	1,050	1,020
25/05/2010	1,260	1,020	1,030	1,070	1,120	1,100	1,070	1,040
01/06/2010	1,280	1,040	1,050	1,090	1,140	1,120	1,090	1,060
08/06/2010	1,300	1,060	1,070	1,110	1,160	1,140	1,110	1,080
15/06/2010	1,340	1,100	1,110	1,150	1,200	1,180	1,150	1,120
22/06/2010	1,340	1,100	1,110	1,150	1,200	1,180	1,150	1,120
29/06/2010	1,340	1,100	1,110	1,150	1,200	1,180	1,150	1,120
06/07/2010	1,310	1,070	1,080	1,120	1,170	1,150	1,120	1,080
13/07/2010	1,290	1,050	1,060	1,100	1,150	1,130	1,100	1,060
20/07/2010	1,280	1,040	1,050	1,090	1,140	1,120	1,090	1,060
27/07/2010	1,360	1,060	1,070	1,110	1,160	1,140	1,110	1,080
03/08/2010	1,430	1,130	1,140	1,180	1,230	1,210	1,180	1,150
24/08/2010	1,430	1,180	1,190	1,230	1,280	1,260	1,230	1,200
31/08/2010	1,430	1,180	1,190	1,230	1,280	1,260	1,230	1,200
07/09/2010	1,470	1,210	1,220	1,260	1,310	1,290	1,260	1,230
14/09/2010	1,500	1,240	1,250	1,290	1,340	1,320	1,290	1,260
21/09/2010	1,500	1,240	1,250	1,290	1,340	1,320	1,290	1,260
28/09/2010	1,500	1,240	1,250	1,290	1,340	1,320	1,290	1,260
05/10/2010	1,460	1,220	1,230	1,270	1,320	1,300	1,270	1,240
12/10/2010	1,430	1,190	1,200	1,240	1,290	1,270	1,240	1,210
19/10/2010	1,390	1,170	1,180	1,220	1,270	1,250	1,220	1,190
26/10/2010	1,340	1,150	1,160	1,200	1,250	1,230	1,200	1,170
02/11/2010	1,340	1,150	1,160	1,200	1,250	1,230	1,200	1,170
09/11/2010	1,360	1,170	1,180	1,220	1,270	1,250	1,220	1,190
16/11/2010	1,320	1,150	1,160	1,200	1,250	1,230	1,200	1,170
23/11/2010	1,320	1,150	1,160	1,200	1,250	1,230	1,200	1,170
30/11/2010	1,320	1,150	1,160	1,200	1,250	1,230	1,200	1,170
07/12/2010	1,300	1,130	1,140	1,180	1,230	1,210	1,180	1,150
14/12/2010	1,300	1,130	1,140	1,180	1,230	1,210	1,180	1,150
21/12/2010	1,320	1,150	1,160	1,200	1,250	1,230	1,200	1,170
28/12/2010	1,340	1,170	1,180	1,220	1,270	1,250	1,220	1,190
MEDIA	1,331	1,116	1,126	1,166	1,216	1,196	1,166	1,135

PERUGIA 2010
SUINI D'ALLEVAMENTO
 (Euro/Kg)



PERUGIA 2010
SUINI DA MACELLO
 (Euro/Kg)

