



MILANO 2008

CAMERA DI COMMERCIO DI MILANO

Categoria: SUINI VIVI

Prezzi: (Franco Partenza) Per Kg peso vivo - IVA esclusa

di Cosmino Giovanni Basile

SETTIMANE	SUINI D'ALLEVAMENTO (€/Kg)							
	< a 15	da 25	da 30	da 40	da 50	da 65	da 80	da 100
07/01/2008	2,98	2,00	1,70	1,36	1,25	1,18	1,18	1,18
14/01/2008	2,98	2,00	1,70	1,36	1,26	1,19	1,18	1,18
21/01/2008	nq	nq	nq	nq	nq	nq	nq	nq
28/01/2008	2,98	2,00	1,70	1,36	1,27	1,20	1,19	1,19
04/02/2008	2,98	2,00	1,70	1,37	1,29	1,22	1,20	1,19
11/02/2008	2,98	2,00	1,70	1,37	1,30	1,23	1,20	1,19
18/02/2008	2,98	2,00	1,70	1,37	1,30	1,24	1,20	1,19
25/02/2008	2,98	2,00	1,70	1,37	1,31	1,25	1,20	1,19
03/03/2008	2,98	2,00	1,70	1,40	1,34	1,26	1,20	1,19
10/03/2008	2,98	2,00	1,72	1,44	1,38	1,28	1,22	1,20
17/03/2008	2,98	2,01	1,74	1,48	1,42	1,31	1,24	1,22
24/03/2008	2,98	2,01	1,77	1,52	1,46	1,33	1,26	1,24
31/03/2008	2,98	2,01	1,79	1,56	1,50	1,36	1,26	1,24
07/04/2008	2,98	2,01	1,80	1,58	1,52	1,36	1,26	1,24
14/04/2008	2,98	2,01	1,80	1,58	1,52	1,36	1,26	1,24
21/04/2008	2,95	1,99	1,80	1,58	1,52	1,36	1,24	1,22
28/04/2008	2,93	1,97	1,79	1,58	1,52	1,36	1,22	1,20
05/05/2008	2,91	1,95	1,77	1,58	1,52	1,36	1,22	1,20
12/05/2008	2,89	1,93	1,77	1,58	1,52	1,36	1,22	1,20
19/05/2008	2,88	1,93	1,77	1,58	1,53	1,36	1,22	1,20
26/05/2008	2,88	1,93	1,77	1,58	1,54	1,38	1,24	1,22
02/06/2008	nq	nq	nq	nq	nq	nq	nq	nq
09/06/2008	2,88	1,93	1,78	1,61	1,58	1,42	1,27	1,25
16/06/2008	2,88	1,95	1,81	1,64	1,62	1,45	1,30	1,28
23/06/2008	2,88	1,97	1,83	1,67	1,65	1,48	1,32	1,30
30/06/2008	2,88	1,98	1,86	1,70	1,68	1,51	1,34	1,32
07/07/2008	2,88	1,99	1,88	1,72	1,69	1,51	1,34	1,32
14/07/2008	2,88	1,99	1,88	1,72	1,69	1,52	1,36	1,34
21/07/2008	2,88	1,99	1,88	1,72	1,70	1,53	1,37	1,35
28/07/2008	2,88	2,00	1,90	1,75	1,73	1,56	1,41	1,39
04/08/2008	2,89	2,02	1,93	1,78	1,77	1,61	1,46	1,44
18/08/2008	2,90	2,07	1,98	1,83	1,82	1,66	1,51	1,49
25/08/2008	2,91	2,09	2,01	1,86	1,84	1,68	1,53	1,51
01/09/2008	nq	nq	nq	nq	nq	nq	nq	nq
08/09/2008	2,93	2,11	2,03	1,87	1,84	1,68	1,53	1,51
15/09/2008	2,96	2,14	2,06	1,89	1,84	1,68	1,53	1,51
22/09/2008	2,98	2,16	2,08	1,90	1,84	1,68	1,53	1,51
29/09/2008	2,99	2,17	2,09	1,91	1,84	1,68	1,53	1,51
06/10/2008	3,00	2,18	2,09	1,91	1,84	1,68	1,53	1,51
13/10/2008	3,03	2,21	2,10	1,92	1,84	1,68	1,53	1,51
20/10/2008	3,07	2,23	2,12	1,93	1,84	1,68	1,53	1,51
27/10/2008	3,10	2,25	2,14	1,93	1,84	1,68	1,53	1,51
03/11/2008	3,13	2,27	2,16	1,93	1,84	1,65	1,49	1,47
10/11/2008	3,16	2,29	2,18	1,93	1,82	1,62	1,46	1,44
17/11/2008	3,20	2,31	2,19	1,93	1,81	1,59	1,43	1,41
24/11/2008	3,23	2,33	2,21	1,93	1,79	1,56	1,40	1,38
01/12/2008	3,27	2,36	2,23	1,93	1,79	1,53	1,37	1,35
05/12/2008	3,31	2,39	2,26	1,93	1,79	1,52	1,36	1,34
15/12/2008	3,34	2,42	2,29	1,93	1,79	1,50	1,34	1,32
22/12/2008	3,39	2,46	2,32	1,94	1,79	1,49	1,32	1,30
29/12/2008	3,44	2,49	2,34	1,95	1,79	1,49	1,32	1,30
MEDIA	3,01	2,09	1,93	1,69	1,62	1,46	1,34	1,32

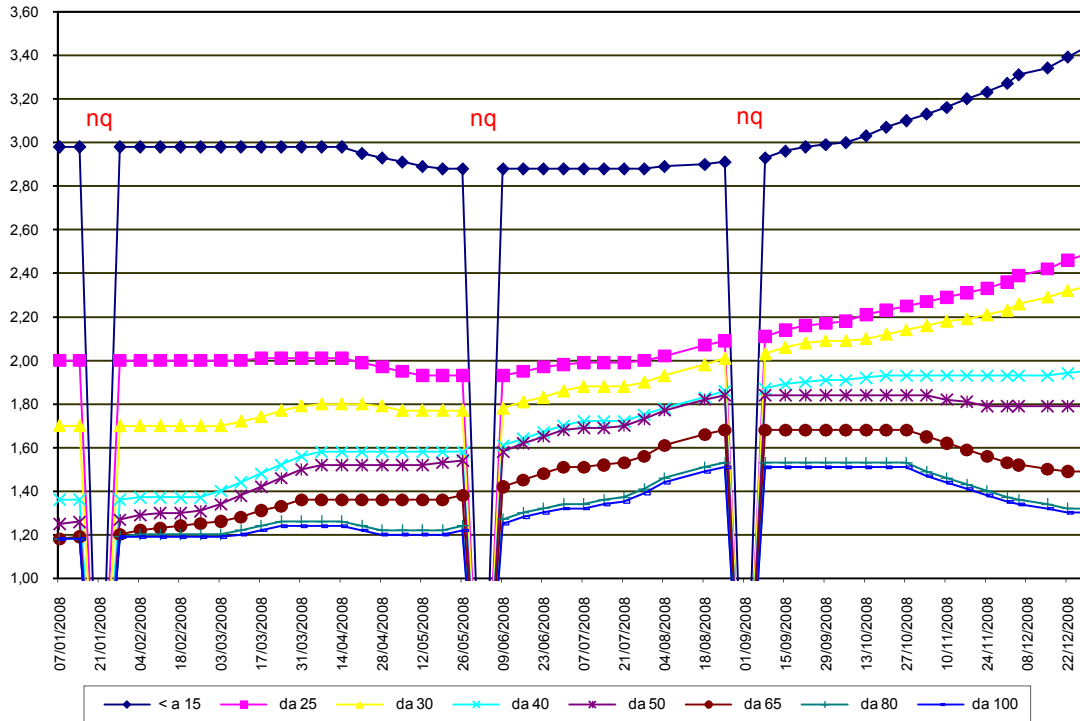
nq = non quotati

MILANO 2008

SETTIMANE	SUINI DA MACELLO (€/Kg)						
	90/115	da 115	da 130	da 144	da 156	da 176	> 176
07/01/2008	1,100	nq	nq	nq	nq	nq	nq
14/01/2008	1,100	1,075	1,085	1,095	1,180	1,180	1,095
21/01/2008	1,140	1,115	1,125	1,135	1,220	1,220	1,135
28/01/2008	1,205	1,180	1,190	1,200	1,285	1,285	1,200
04/02/2008	1,205	nq	nq	nq	nq	nq	nq
11/02/2008	1,205	nq	nq	nq	nq	nq	nq
18/02/2008	1,075	1,050	1,060	1,070	1,155	1,155	1,070
25/02/2008	1,075	nq	nq	nq	nq	nq	nq
03/03/2008	1,140	1,115	1,125	1,135	1,220	1,220	1,135
10/03/2008	1,160	1,135	1,145	1,155	1,240	1,240	1,155
17/03/2008	1,160	nq	nq	nq	nq	nq	nq
24/03/2008	1,160	nq	nq	nq	nq	nq	nq
31/03/2008	1,110	1,080	1,090	1,100	1,190	1,190	1,100
07/04/2008	1,070	1,040	1,050	1,060	1,150	1,150	1,060
14/04/2008	1,070	nq	nq	nq	nq	nq	nq
21/04/2008	0,990	0,920	0,930	0,940	1,030	1,030	0,940
28/04/2008	0,995	0,925	0,935	0,945	1,035	1,035	0,945
05/05/2008	0,985	0,955	0,965	0,975	1,065	1,065	0,975
12/05/2008	0,985	nq	nq	nq	nq	nq	nq
19/05/2008	1,120	1,090	1,100	1,110	1,200	1,200	1,110
26/05/2008	1,125	1,095	1,105	1,115	1,205	1,205	1,115
02/06/2008	1,130	1,100	1,110	1,120	1,210	1,210	1,120
09/06/2008	1,210	1,180	1,190	1,190	1,260	1,260	1,170
16/06/2008	1,280	1,240	1,240	1,240	1,300	1,300	1,210
23/06/2008	1,280	1,240	1,240	1,240	1,300	1,300	1,210
30/06/2008	1,280	1,240	1,240	1,240	1,300	1,300	1,210
07/07/2008	1,280	nq	nq	nq	nq	nq	nq
14/07/2008	1,280	nq	nq	nq	nq	nq	nq
21/07/2008	1,305	1,265	1,265	1,265	1,325	1,325	1,235
28/07/2008	1,395	1,355	1,355	1,355	1,415	1,415	1,325
04/08/2008	1,460	1,420	1,420	1,420	1,480	1,480	1,390
18/08/2008	nq	nq	nq	nq	nq	nq	nq
25/08/2008	nq	nq	nq	nq	nq	nq	nq
01/09/2008	1,460	1,420	1,420	1,420	1,480	1,480	1,390
08/09/2008	1,540	1,470	1,480	1,490	1,550	1,550	1,470
15/09/2008	1,585	1,515	1,525	1,535	1,595	1,595	1,515
22/09/2008	1,565	1,495	1,505	1,515	1,575	1,575	1,495
29/09/2008	1,565	1,465	1,475	1,485	1,545	1,545	1,465
06/10/2008	1,565	1,465	1,475	1,485	1,560	1,560	1,480
13/10/2008	1,610	1,505	1,515	1,525	1,600	1,600	1,520
20/10/2008	1,610	1,505	1,515	1,525	1,603	1,603	1,520
27/10/2008	1,550	1,440	1,450	1,470	1,548	1,548	1,470
03/11/2008	1,550	nq	nq	nq	nq	nq	nq
10/11/2008	1,250	1,220	1,240	1,270	1,360	1,360	1,290
17/11/2008	1,250	nq	nq	nq	nq	nq	nq
24/11/2008	1,265	1,235	1,255	1,285	1,375	1,375	1,305
01/12/2008	1,225	1,195	1,215	1,245	1,330	1,330	1,265
05/12/2008	1,160	1,130	1,150	1,180	1,270	1,270	1,200
15/12/2008	1,160	nq	nq	nq	nq	nq	nq
22/12/2008	1,100	1,070	1,090	1,120	1,210	1,210	1,140
29/12/2008	1,100	1,070	1,090	1,120	1,210	1,210	1,140
MEDIA	1,249	1,223	1,232	1,244	1,322	1,322	1,238

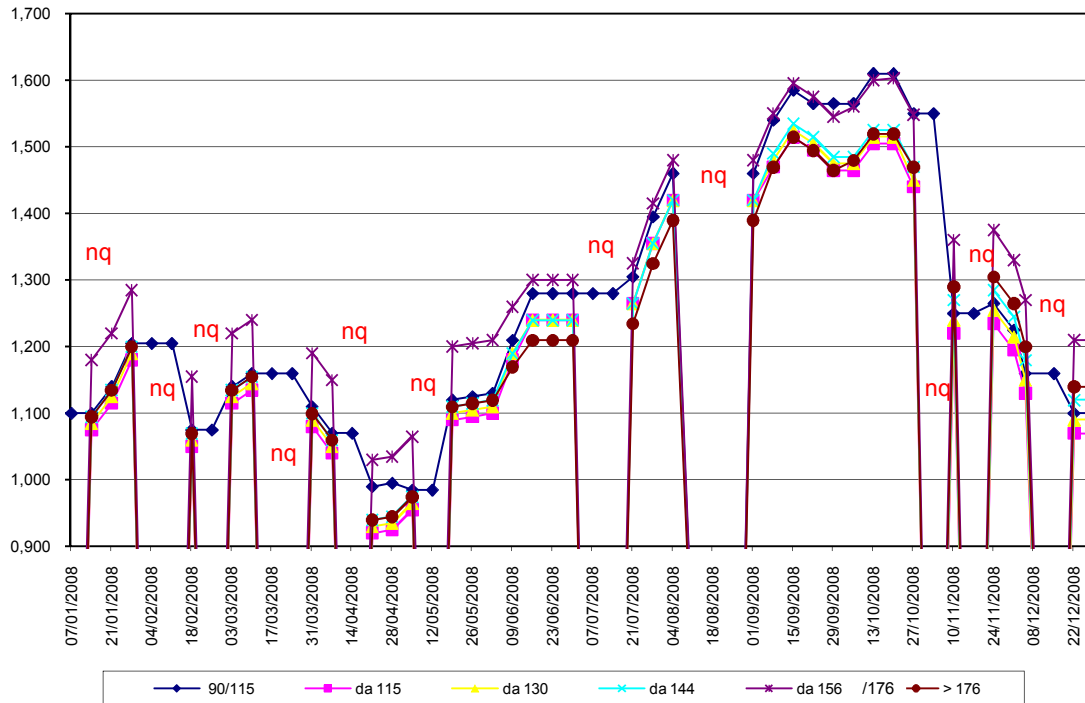
nq = non quotati

MILANO 2008
TREND SUINI D'ALLEVAMENTO
 (Euro/Kg)



nq = non quotati

MILANO 2008 TREND SUINI DA MACELLO (Euro/Kg)



nq = non quotati