

Mercato  
Mercati nazionali

5.10.18

**ERSAF**  
ENTE REGIONALE PER I SERVIZI  
ALL'AGRICOLTURA E ALLE FORESTE

**PARMA 2010**

**CAMERA DI COMMERCIO DI PARMA**

**Categoria: SUINI VIVI**

**Prezzi: (Franco Partenza) Per Kg peso vivo - IVA esclusa**

di Cosmino Giovanni Basile

SETTIMANE	SUINI D'ALLEVAMENTO (€/Kg)							
	< a 15	da 25	da 30	da 40	da 50	da 65	da 80	da 100
08/01/2010	3,52	2,47	2,13	1,7	1,48	1,38	1,32	1,32
15/01/2010	3,65	2,60	2,27	1,83	1,55	1,41	1,33	1,33
22/01/2010	3,72	2,66	2,33	1,89	1,58	1,43	1,33	1,33
29/01/2010	3,78	2,72	2,40	1,94	1,60	1,44	1,33	1,33
05/02/2010	3,82	2,76	2,45	1,99	1,63	1,46	1,33	1,33
12/02/2010	3,88	2,82	2,51	2,04	1,67	1,49	1,33	1,33
19/02/2010	3,92	2,86	2,57	2,09	1,72	1,51	1,33	1,33
26/02/2010	3,93	2,88	2,60	2,13	1,76	1,51	1,33	1,33
05/03/2010	3,94	2,90	2,63	2,17	1,79	1,52	1,33	1,33
12/03/2010	3,94	2,90	2,63	2,18	1,80	1,53	1,33	1,33
19/03/2010	3,94	2,90	2,63	2,20	1,82	1,54	1,33	1,33
26/03/2010	3,93	2,89	2,63	2,21	1,84	1,55	1,33	1,33
02/04/2010	3,91	2,87	2,62	2,21	1,84	1,55	1,32	1,32
09/04/2010	3,90	2,85	2,62	2,21	1,84	1,55	1,32	1,32
16/04/2010	3,88	2,84	2,61	2,21	1,84	1,55	1,32	1,32
23/04/2010	3,83	2,79	2,59	2,20	1,84	1,55	1,32	1,32
30/04/2010	3,77	2,74	2,55	2,18	1,83	1,55	1,32	1,32
07/05/2010	3,73	2,71	2,53	2,17	1,83	1,55	1,32	1,32
14/05/2010	3,69	2,67	2,50	2,14	1,82	1,55	1,32	1,32
21/05/2010	3,65	2,64	2,44	2,10	1,79	1,53	1,31	1,31
28/05/2010	3,61	2,61	2,42	2,08	1,78	1,53	1,31	1,31
04/06/2010	3,61	2,61	2,40	2,07	1,78	1,53	1,31	1,31
11/06/2010	3,61	2,60	2,38	2,05	1,78	1,53	1,31	1,31
18/06/2010	3,61	2,59	2,36	2,04	1,78	1,53	1,31	1,31
25/06/2010	3,61	2,57	2,34	2,02	1,78	1,53	1,31	1,31
09/07/2010	3,57	2,53	2,30	1,99	1,76	1,52	1,31	1,31
16/07/2010	3,54	2,50	2,26	1,95	1,74	1,52	1,31	1,31
23/07/2010	3,49	2,45	2,22	1,92	1,71	1,51	1,31	1,31
30/07/2010	3,43	2,40	2,18	1,88	1,68	1,50	1,31	1,31
06/08/2010	3,39	2,35	2,13	1,84	1,65	1,49	1,31	1,31
20/08/2010	3,29	2,25	2,05	1,76	1,60	1,48	1,32	1,32
27/08/2010	3,26	2,22	2,03	1,74	1,58	1,47	1,32	1,32
03/09/2010	3,24	2,19	2,00	1,72	1,56	1,46	1,32	1,32
10/09/2010	3,22	2,17	1,97	1,69	1,53	1,44	1,32	1,32
17/09/2010	3,19	2,14	1,93	1,65	1,51	1,43	1,32	1,32
24/09/2010	3,14	2,10	1,90	1,62	1,48	1,41	1,32	1,32
01/10/2010	3,12	2,08	1,88	1,60	1,46	1,40	1,32	1,32
08/10/2010	3,10	2,05	1,85	1,58	1,44	1,40	1,32	1,32
15/10/2010	3,10	2,03	1,82	1,55	1,43	1,39	1,31	1,31
22/10/2010	3,10	2,02	1,80	1,53	1,42	1,38	1,31	1,31
29/10/2010	3,10	2,01	1,79	1,52	1,41	1,37	1,30	1,30
05/11/2010	3,10	2,01	1,79	1,52	1,39	1,35	1,30	1,30
12/11/2010	3,10	2,01	1,79	1,52	1,39	1,35	1,29	1,29
19/11/2010	3,10	2,01	1,79	1,52	1,39	1,35	1,29	1,29
26/11/2010	3,10	2,01	1,79	1,52	1,39	1,35	1,29	1,29
03/12/2010	3,10	2,01	1,79	1,52	1,39	1,35	1,29	1,29
10/12/2010	3,11	2,01	1,79	1,52	1,39	1,35	1,29	1,29
17/12/2010	3,13	2,02	1,80	1,52	1,39	1,35	1,29	1,29
<b>MEDIA</b>	<b>3,51</b>	<b>2,46</b>	<b>2,22</b>	<b>1,88</b>	<b>1,63</b>	<b>1,47</b>	<b>1,32</b>	<b>1,32</b>

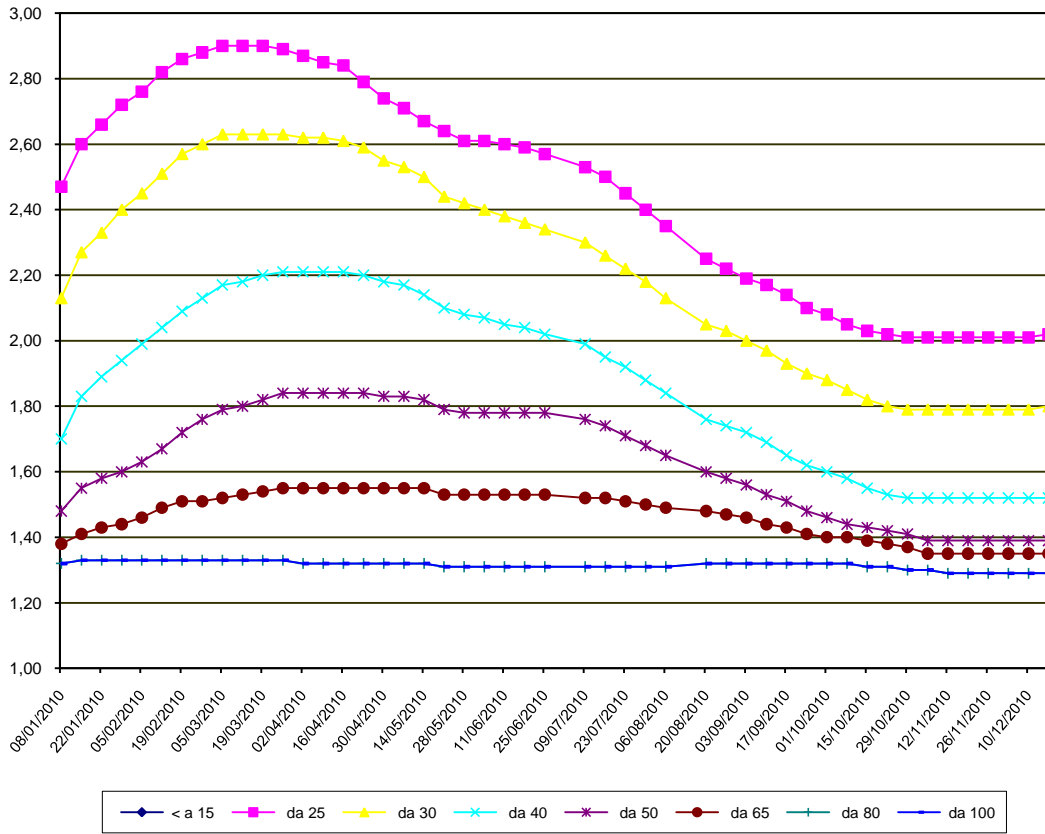
nq = non quotati

## PARMA 2010

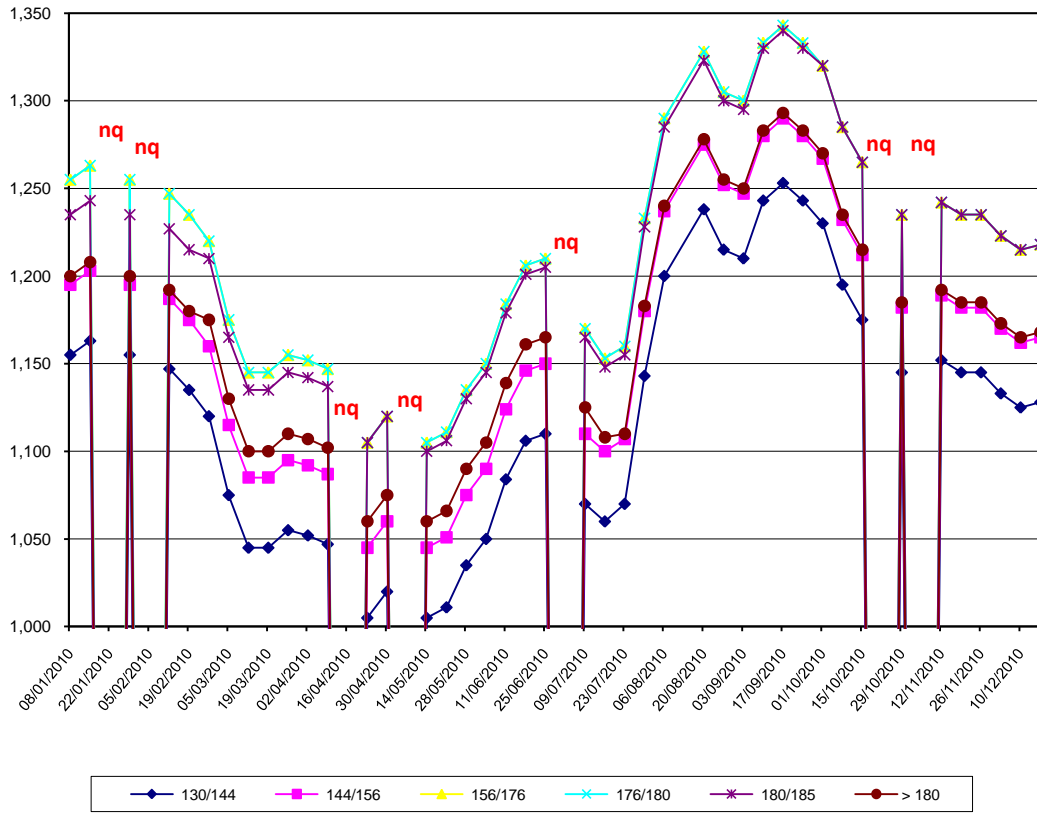
SETTIMANE	SUINI DA MACELLO (€/Kg)							
	90/115	115/130	130/144	144/156	156/176	176/180	180/185	> 180
08/01/2010	nq	nq	1,155	1,195	1,255	1,255	1,235	1,200
15/01/2010	nq	nq	1,163	1,203	1,263	1,263	1,243	1,208
22/01/2010	nq	nq	nq	nq	nq	nq	nq	nq
29/01/2010	nq	nq	1,155	1,195	1,255	1,255	1,235	1,200
05/02/2010	nq	nq	nq	nq	nq	nq	nq	nq
12/02/2010	nq	nq	1,147	1,187	1,247	1,247	1,227	1,192
19/02/2010	nq	nq	1,135	1,175	1,235	1,235	1,215	1,180
26/02/2010	nq	nq	1,120	1,160	1,220	1,220	1,210	1,175
05/03/2010	nq	nq	1,075	1,115	1,175	1,175	1,165	1,130
12/03/2010	nq	nq	1,045	1,085	1,145	1,145	1,135	1,100
19/03/2010	nq	nq	1,045	1,085	1,145	1,145	1,135	1,100
26/03/2010	nq	nq	1,055	1,095	1,155	1,155	1,145	1,110
02/04/2010	nq	nq	1,052	1,092	1,152	1,152	1,142	1,107
09/04/2010	nq	nq	1,047	1,087	1,147	1,147	1,137	1,102
16/04/2010	nq	nq	nq	nq	nq	nq	nq	nq
23/04/2010	nq	nq	1,005	1,045	1,105	1,105	1,105	1,060
30/04/2010	nq	nq	1,020	1,060	1,120	1,120	1,120	1,075
07/05/2010	nq	nq	nq	nq	nq	nq	nq	nq
14/05/2010	nq	nq	1,005	1,045	1,105	1,105	1,100	1,060
21/05/2010	nq	nq	1,011	1,051	1,111	1,111	1,106	1,066
28/05/2010	nq	nq	1,035	1,075	1,135	1,135	1,130	1,090
04/06/2010	nq	nq	1,050	1,090	1,150	1,150	1,145	1,105
11/06/2010	nq	nq	1,084	1,124	1,184	1,184	1,179	1,139
18/06/2010	nq	nq	1,106	1,146	1,206	1,206	1,201	1,161
25/06/2010	nq	nq	1,110	1,150	1,210	1,210	1,205	1,165
02/07/2010	nq	nq	nq	nq	nq	nq	nq	nq
09/07/2010	nq	nq	1,070	1,110	1,170	1,170	1,165	1,125
16/07/2010	nq	nq	1,060	1,100	1,153	1,153	1,148	1,108
23/07/2010	nq	nq	1,070	1,107	1,160	1,160	1,155	1,110
30/07/2010	nq	nq	1,143	1,180	1,233	1,233	1,228	1,183
06/08/2010	nq	nq	1,200	1,237	1,290	1,290	1,285	1,240
20/08/2010	nq	nq	1,238	1,275	1,328	1,328	1,323	1,278
27/08/2010	nq	nq	1,215	1,252	1,305	1,305	1,300	1,255
03/09/2010	nq	nq	1,210	1,247	1,300	1,300	1,295	1,250
10/09/2010	nq	nq	1,243	1,280	1,333	1,333	1,330	1,283
17/09/2010	nq	nq	1,253	1,290	1,343	1,343	1,340	1,293
24/09/2010	nq	nq	1,243	1,280	1,333	1,333	1,330	1,283
01/10/2010	nq	nq	1,230	1,267	1,320	1,320	1,320	1,270
08/10/2010	nq	nq	1,195	1,232	1,285	1,285	1,285	1,235
15/10/2010	nq	nq	1,175	1,212	1,265	1,265	1,265	1,215
22/10/2010	nq	nq	nq	nq	nq	nq	nq	nq
29/10/2010	nq	nq	1,145	1,182	1,235	1,235	1,235	1,185
05/11/2010	nq	nq	nq	nq	nq	nq	nq	nq
12/11/2010	nq	nq	1,152	1,189	1,242	1,242	1,242	1,192
19/11/2010	nq	nq	1,145	1,182	1,235	1,235	1,235	1,185
26/11/2010	nq	nq	1,145	1,182	1,235	1,235	1,235	1,185
03/12/2010	nq	nq	1,133	1,170	1,223	1,223	1,223	1,173
10/12/2010	nq	nq	1,125	1,162	1,215	1,215	1,215	1,165
17/12/2010	nq	nq	1,128	1,165	1,218	1,218	1,218	1,168
<b>MEDIA</b>	<b>nq</b>	<b>nq</b>	<b>1,122</b>	<b>1,161</b>	<b>1,218</b>	<b>1,218</b>	<b>1,212</b>	<b>1,169</b>

nq = non quotati

**PARMA 2010**  
**SUINI D'ALLEVAMENTO**  
 (Euro/Kg)



**PARMA 2010**  
**SUINI DA MACELLO**  
 (Euro/Kg)



*nq = non quotati*