



12/2017

Mercato
Mercati nazionali

5.3.27



MILANO 2017

CAMERA DI COMMERCIO DI MILANO

Categoria: SUINI VIVI

Prezzi: (Franco Partenza) Per Kg peso vivo - IVA esclusa

di Cosmino Giovanni Basile

SETTIMANE	Da 7 kg €/capo	SUINI D'ALLEVAMENTO (€/Kg)							
		< a 15	da 25	da 30	da 40	da 50	da 65	da 80	da 100
09/01/2017	51,500	4,220	3,070	2,790	2,280	2,030	1,700	1,610	1,500
16/01/2017	53,000	4,340	3,170	2,880	2,320	2,030	1,700	1,590	1,470
23/01/2017	54,000	4,440	3,270	2,970	2,360	2,050	1,700	1,590	1,470
30/01/2017	55,500	4,540	3,370	3,060	2,420	2,050	1,700	1,590	1,470
06/02/2017	56,500	4,630	3,460	3,150	2,490	2,080	1,700	1,590	1,470
13/02/2017	57,000	4,710	3,550	3,240	2,570	2,120	1,700	1,590	1,470
20/02/2017	57,750	4,790	3,640	3,330	2,650	2,180	1,720	1,600	1,480
27/02/2017	58,000	4,870	3,720	3,410	2,720	2,240	1,750	1,610	1,490
06/03/2017	58,250	4,930	3,790	3,490	2,810	2,330	1,790	1,630	1,510
13/03/2017	58,500	4,990	3,870	3,570	2,890	2,410	1,890	1,650	1,530
20/03/2017	58,500	5,050	3,930	3,630	2,960	2,490	1,960	1,670	1,530
27/03/2017	58,500	5,120	4,000	3,680	3,010	2,530	2,000	1,690	1,550
03/04/2017	58,500	5,190	4,040	3,720	3,050	2,560	2,030	1,710	1,570
10/04/2017	58,500	5,190	4,080	3,750	3,080	2,590	2,060	1,730	1,590
14/04/2017	58,500	5,190	4,095	3,780	3,110	2,620	2,080	1,750	1,610
21/04/2017	58,500	5,190	4,105	3,800	3,130	2,640	2,100	1,770	1,630
28/04/2017	58,500	5,190	4,110	3,820	3,150	2,660	2,130	1,800	1,650
08/05/2017	58,500	5,190	4,110	3,820	3,160	2,680	2,150	1,820	1,660
15/05/2017	58,500	5,190	4,110	3,820	3,170	2,690	2,160	1,830	1,660
22/05/2017	58,500	5,190	4,110	3,820	3,170	2,690	2,170	1,840	1,660
29/05/2017	58,500	5,190	4,110	3,820	3,170	2,690	2,170	1,840	1,660
05/06/2017	58,500	5,190	4,110	3,820	3,170	2,690	2,170	1,840	1,660
12/06/2017	58,500	5,190	4,110	3,820	3,170	2,690	2,170	1,840	1,660
19/06/2017	58,500	5,190	4,110	3,820	3,170	2,690	2,170	1,840	1,660
26/06/2017	58,500	5,190	4,110	3,820	3,170	2,690	2,170	1,860	1,680
03/07/2017	58,000	5,190	4,110	3,820	3,170	2,690	2,190	1,880	1,700
17/07/2017	58,000	5,190	4,090	3,770	3,150	2,690	2,190	1,900	1,720
24/07/2017	58,000	5,190	4,090	3,720	3,120	2,690	2,190	1,910	1,740
31/07/2017	58,000	5,190	4,080	3,650	3,080	2,660	2,190	1,910	1,740
07/08/2017	58,000	5,190	4,060	3,570	3,040	2,640	2,190	1,910	1,740
28/08/2017	56,000	5,060	3,870	3,360	2,830	2,540	2,190	1,910	1,740
04/09/2017	55,500	4,990	3,800	3,300	2,770	2,490	2,180	1,910	1,740
18/09/2017	55,500	4,950	3,730	3,230	2,730	2,460	2,180	1,930	1,760
25/09/2017	55,500	4,950	3,660	3,170	2,700	2,410	2,160	1,930	1,760
02/10/2017	55,500	4,950	3,610	3,120	2,670	2,370	2,140	1,930	1,760
09/10/2017	55,500	4,950	3,560	3,070	2,620	2,320	2,120	1,920	1,750
16/10/2017	56,000	4,950	3,510	3,030	2,580	2,280	2,100	1,910	1,730
23/10/2017	56,250	4,950	3,440	3,000	2,550	2,240	2,060	1,910	1,730
30/10/2017	57,250	4,950	3,390	2,960	2,510	2,190	2,010	1,910	1,730
06/11/2017	57,750	4,960	3,390	2,920	2,470	2,150	1,990	1,910	1,730
20/11/2017	58,500	4,970	3,310	2,870	2,420	2,120	1,950	1,910	1,730
27/11/2017	59,500	5,010	3,310	2,860	2,400	2,100	1,930	1,910	1,730
04/12/2017	60,000	5,030	3,320	2,870	2,400	2,100	1,930	1,910	1,730
11/12/2017	61,000	5,080	3,340	2,900	2,410	2,100	1,930	1,890	1,710
18/12/2017	62,000	5,170	3,410	2,960	2,440	2,100	1,930	1,890	1,710
MEDIA	57,539	4,999	3,761	3,395	2,809	2,410	2,018	1,802	1,644

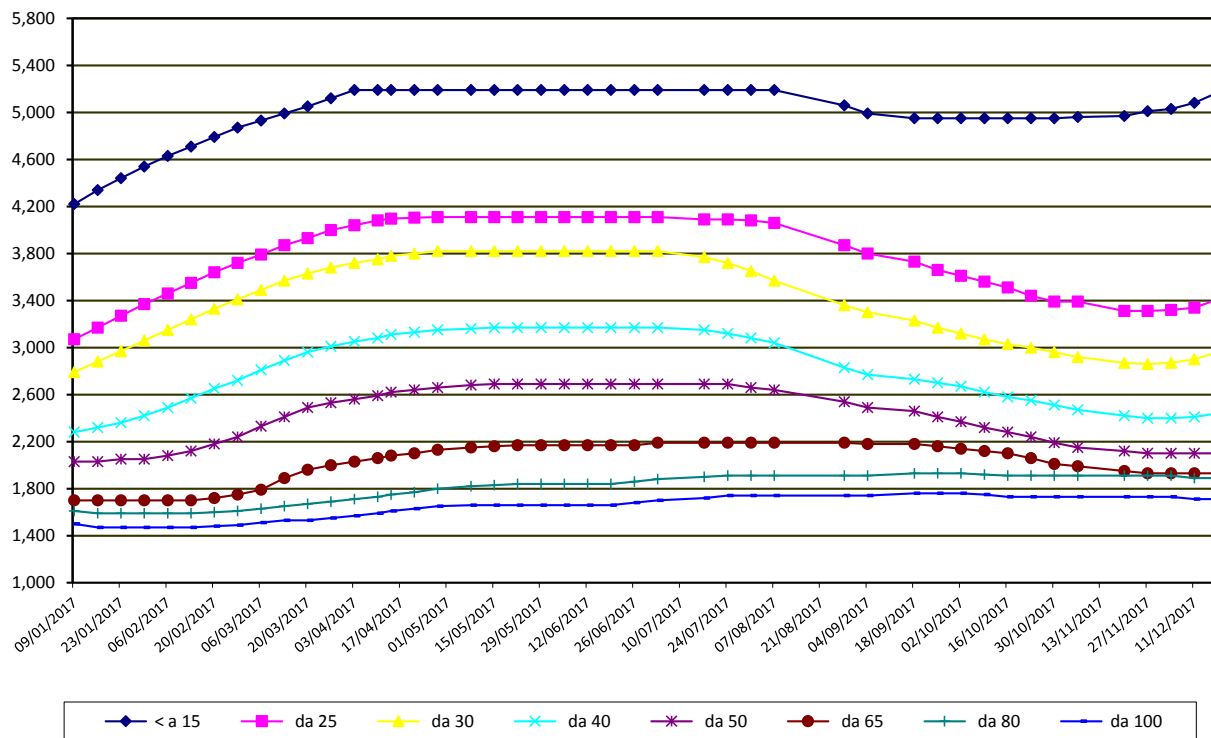
nq = non quotati

MILANO 2017

SETTIMANE	SUINI DA MACELLO (€/Kg)						
	90/115	da 115	da 130	da 144	da 156	da 176	> 176
09/01/2017	nq	nq	nq	nq	nq	nq	nq
16/01/2017	nq	nq	nq	nq	nq	nq	nq
23/01/2017	nq	nq	nq	nq	nq	nq	nq
30/01/2017	nq	nq	nq	nq	nq	nq	nq
06/02/2017	nq	nq	nq	nq	nq	nq	nq
13/02/2017	nq	nq	nq	nq	nq	nq	nq
20/02/2017	nq	nq	nq	nq	nq	nq	nq
27/02/2017	nq	nq	nq	nq	nq	nq	nq
06/03/2017	nq	nq	nq	nq	nq	nq	nq
13/03/2017	nq	nq	nq	nq	nq	nq	nq
20/03/2017	nq	nq	nq	nq	nq	nq	nq
27/03/2017	nq	nq	nq	nq	nq	nq	nq
03/04/2017	nq	nq	nq	nq	nq	nq	nq
10/04/2017	nq	nq	nq	nq	nq	nq	nq
14/04/2017	nq	nq	nq	nq	nq	nq	nq
21/04/2017	nq	nq	nq	nq	nq	nq	nq
28/04/2017	nq	nq	nq	nq	nq	nq	nq
08/05/2017	nq	nq	nq	nq	nq	nq	nq
15/05/2017	nq	nq	nq	nq	nq	nq	nq
22/05/2017	nq	nq	nq	nq	nq	nq	nq
29/05/2017	nq	nq	nq	nq	nq	nq	nq
05/06/2017	nq	nq	nq	nq	nq	nq	nq
12/06/2017	nq	nq	nq	nq	nq	nq	nq
19/06/2017	nq	nq	nq	nq	nq	nq	nq
26/06/2017	nq	nq	nq	nq	nq	nq	nq
03/07/2017	nq	nq	nq	nq	nq	nq	nq
10/07/2017	nq	nq	nq	nq	nq	nq	nq
17/07/2017	nq	nq	nq	nq	nq	nq	nq
24/07/2017	nq	nq	nq	nq	nq	nq	nq
31/07/2017	nq	nq	nq	nq	nq	nq	nq
07/08/2017	nq	nq	nq	nq	nq	nq	nq
14/08/2017	nq	nq	nq	nq	nq	nq	nq
21/08/2017	nq	nq	nq	nq	nq	nq	nq
28/08/2017	nq	nq	nq	nq	nq	nq	nq
04/09/2017	nq	nq	nq	nq	nq	nq	nq
11/09/2017	nq	nq	nq	nq	nq	nq	nq
18/09/2017	nq	nq	nq	nq	nq	nq	nq
25/09/2017	nq	nq	nq	nq	nq	nq	nq
02/10/2017	nq	nq	nq	nq	nq	nq	nq
09/10/2017	nq	nq	nq	nq	nq	nq	nq
16/10/2017	nq	nq	nq	nq	nq	nq	nq
23/10/2017	nq	nq	nq	nq	nq	nq	nq
30/10/2017	nq	nq	nq	nq	nq	nq	nq
06/11/2017	nq	nq	nq	nq	nq	nq	nq
13/11/2017	nq	nq	nq	nq	nq	nq	nq
20/11/2017	nq	nq	nq	nq	nq	nq	nq
27/11/2017	nq	nq	nq	nq	nq	nq	nq
04/12/2017	nq	nq	nq	nq	nq	nq	nq
11/12/2017	nq	nq	nq	nq	nq	nq	nq
18/12/2017	nq	nq	nq	nq	nq	nq	nq
MEDIA	nq	nq	nq	nq	nq	nq	nq

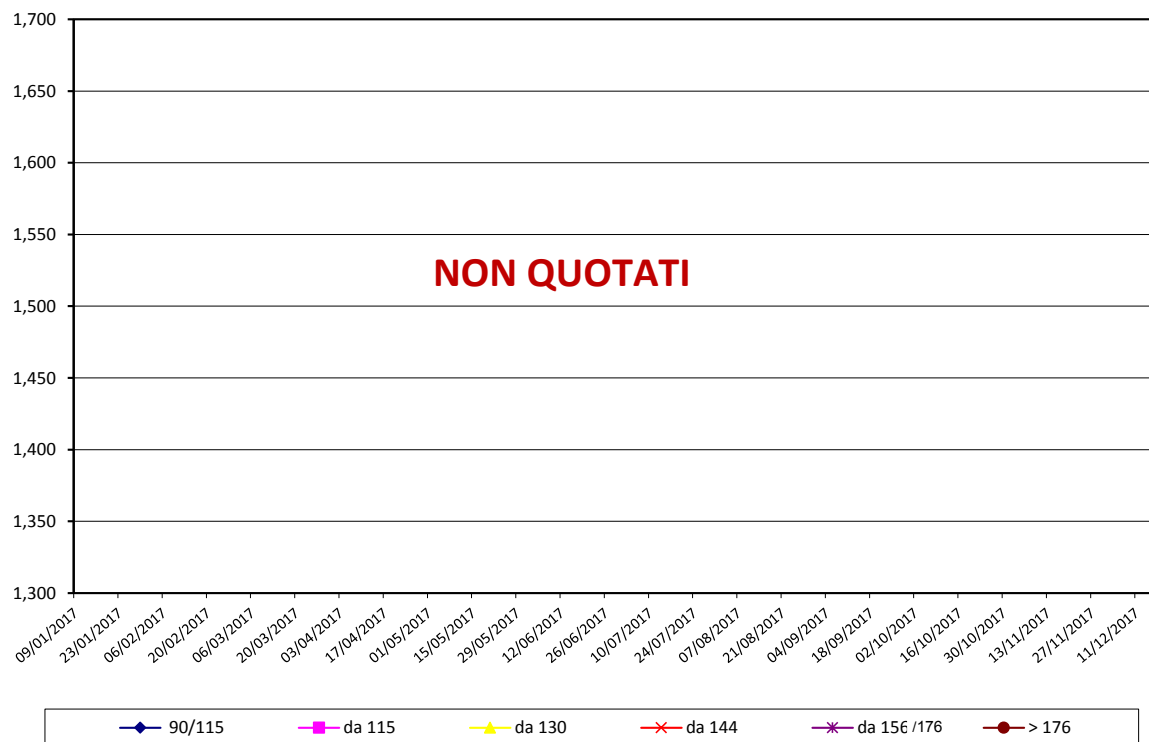
nq = non quotati

MILANO 2017
TREND SUINI D'ALLEVAMENTO
(Euro/kg)



nq = non quotati

MILANO 2017
TREND SUINI DA MACELLO
(Euro/kg)



nq = non quotati