



Mercato  
Mercati nazionali

12/2005

5.5.15.2



## REGGIO EMILIA 2005

CAMERA DI COMMERCIO DI REGGIO EMILIA

Categoria: SUINI VIVI

Prezzi: (Franco Partenza) Per Kg peso vivo - IVA esclusa

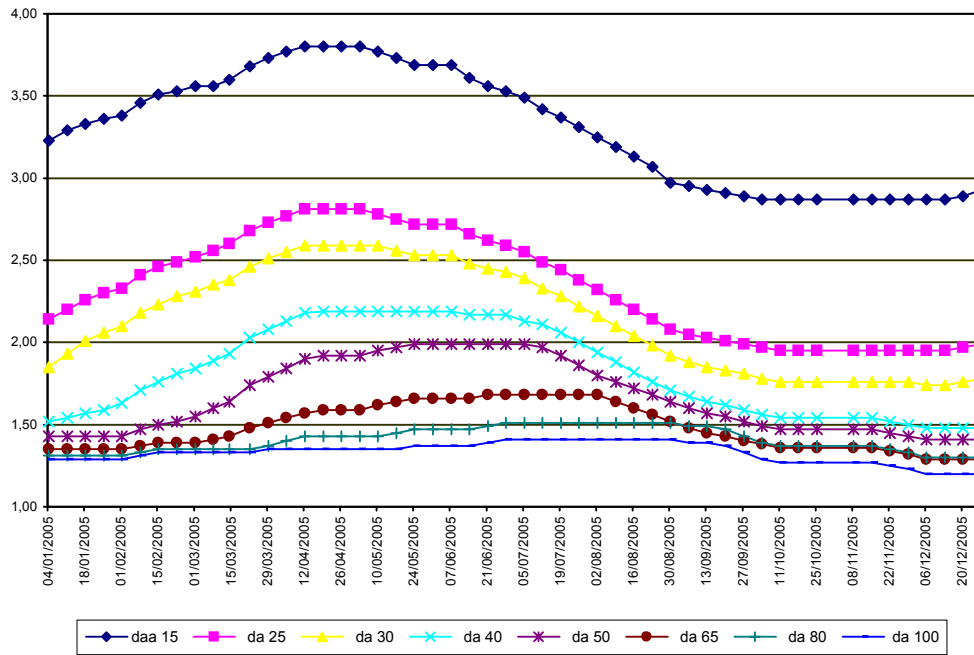
di Cosmino Giovanni Basile

| SETTIMANE    | SUINI D'ALLEVAMENTO (€/Kg) |             |             |             |             |             |             |             |             |
|--------------|----------------------------|-------------|-------------|-------------|-------------|-------------|-------------|-------------|-------------|
|              | da 6                       | da 15       | da 25       | da 30       | da 40       | da 50       | da 65       | da 80       | da 100      |
| 04/01/2005   | 6,62                       | 3,23        | 2,14        | 1,85        | 1,52        | 1,43        | 1,35        | 1,31        | 1,29        |
| 11/01/2005   | 6,62                       | 3,29        | 2,20        | 1,93        | 1,54        | 1,43        | 1,35        | 1,31        | 1,29        |
| 18/01/2005   | 6,62                       | 3,33        | 2,26        | 2,01        | 1,57        | 1,43        | 1,35        | 1,31        | 1,29        |
| 25/01/2005   | 6,62                       | 3,36        | 2,30        | 2,06        | 1,59        | 1,43        | 1,35        | 1,31        | 1,29        |
| 01/02/2005   | 6,62                       | 3,38        | 2,33        | 2,10        | 1,63        | 1,43        | 1,35        | 1,31        | 1,29        |
| 08/02/2005   | 6,70                       | 3,46        | 2,41        | 2,18        | 1,71        | 1,47        | 1,37        | 1,33        | 1,31        |
| 15/02/2005   | 6,75                       | 3,51        | 2,46        | 2,23        | 1,76        | 1,50        | 1,39        | 1,35        | 1,33        |
| 22/02/2005   | 6,80                       | 3,53        | 2,49        | 2,28        | 1,81        | 1,52        | 1,39        | 1,35        | 1,33        |
| 01/03/2005   | 6,80                       | 3,56        | 2,52        | 2,31        | 1,84        | 1,55        | 1,39        | 1,35        | 1,33        |
| 08/03/2005   | 6,80                       | 3,56        | 2,56        | 2,35        | 1,89        | 1,60        | 1,41        | 1,35        | 1,33        |
| 14/03/2005   | 6,80                       | 3,60        | 2,60        | 2,38        | 1,93        | 1,64        | 1,43        | 1,35        | 1,33        |
| 22/03/2005   | 6,80                       | 3,68        | 2,68        | 2,46        | 2,03        | 1,74        | 1,48        | 1,35        | 1,33        |
| 29/03/2005   | 6,80                       | 3,73        | 2,73        | 2,51        | 2,08        | 1,79        | 1,51        | 1,37        | 1,35        |
| 05/04/2005   | 6,80                       | 3,77        | 2,77        | 2,55        | 2,13        | 1,84        | 1,54        | 1,40        | 1,35        |
| 12/04/2005   | 6,80                       | 3,80        | 2,81        | 2,59        | 2,18        | 1,90        | 1,57        | 1,43        | 1,35        |
| 19/04/2005   | 6,80                       | 3,80        | 2,81        | 2,59        | 2,19        | 1,92        | 1,59        | 1,43        | 1,35        |
| 26/04/2005   | 6,80                       | 3,80        | 2,81        | 2,59        | 2,19        | 1,92        | 1,59        | 1,43        | 1,35        |
| 03/05/2005   | 6,80                       | 3,80        | 2,81        | 2,59        | 2,19        | 1,92        | 1,59        | 1,43        | 1,35        |
| 10/05/2005   | 6,77                       | 3,77        | 2,78        | 2,59        | 2,19        | 1,95        | 1,62        | 1,43        | 1,35        |
| 17/05/2005   | 6,72                       | 3,73        | 2,75        | 2,56        | 2,19        | 1,97        | 1,64        | 1,45        | 1,35        |
| 24/05/2005   | 6,67                       | 3,69        | 2,72        | 2,53        | 2,19        | 1,99        | 1,66        | 1,47        | 1,37        |
| 31/05/2005   | 6,67                       | 3,69        | 2,72        | 2,53        | 2,19        | 1,99        | 1,66        | 1,47        | 1,37        |
| 07/06/2005   | 6,67                       | 3,69        | 2,72        | 2,53        | 2,19        | 1,99        | 1,66        | 1,47        | 1,37        |
| 14/06/2005   | 6,59                       | 3,61        | 2,66        | 2,48        | 2,17        | 1,99        | 1,66        | 1,47        | 1,37        |
| 21/06/2005   | 6,49                       | 3,56        | 2,62        | 2,45        | 2,17        | 1,99        | 1,68        | 1,49        | 1,39        |
| 28/06/2005   | 6,46                       | 3,53        | 2,59        | 2,43        | 2,17        | 1,99        | 1,68        | 1,51        | 1,41        |
| 05/07/2005   | 6,42                       | 3,49        | 2,55        | 2,39        | 2,13        | 1,99        | 1,68        | 1,51        | 1,41        |
| 12/07/2005   | 6,32                       | 3,42        | 2,49        | 2,33        | 2,11        | 1,97        | 1,68        | 1,51        | 1,41        |
| 19/07/2005   | 6,22                       | 3,37        | 2,44        | 2,28        | 2,06        | 1,92        | 1,68        | 1,51        | 1,41        |
| 26/07/2005   | 6,12                       | 3,31        | 2,38        | 2,22        | 2,00        | 1,86        | 1,68        | 1,51        | 1,41        |
| 02/08/2005   | 6,02                       | 3,25        | 2,32        | 2,16        | 1,94        | 1,80        | 1,68        | 1,51        | 1,41        |
| 09/08/2005   | 5,92                       | 3,19        | 2,26        | 2,10        | 1,88        | 1,76        | 1,64        | 1,51        | 1,41        |
| 16/08/2005   | 5,82                       | 3,13        | 2,20        | 2,04        | 1,82        | 1,72        | 1,60        | 1,51        | 1,41        |
| 23/08/2005   | 5,72                       | 3,07        | 2,14        | 1,98        | 1,76        | 1,68        | 1,56        | 1,51        | 1,41        |
| 30/08/2005   | 5,62                       | 2,97        | 2,08        | 1,92        | 1,71        | 1,64        | 1,52        | 1,51        | 1,41        |
| 06/09/2005   | 5,60                       | 2,95        | 2,05        | 1,88        | 1,67        | 1,60        | 1,48        | 1,49        | 1,39        |
| 13/09/2005   | 5,58                       | 2,93        | 2,03        | 1,85        | 1,64        | 1,57        | 1,45        | 1,49        | 1,39        |
| 20/09/2005   | 5,56                       | 2,91        | 2,01        | 1,83        | 1,62        | 1,55        | 1,43        | 1,47        | 1,37        |
| 27/09/2005   | 5,54                       | 2,89        | 1,99        | 1,81        | 1,59        | 1,52        | 1,40        | 1,43        | 1,33        |
| 04/10/2005   | 5,52                       | 2,87        | 1,97        | 1,78        | 1,56        | 1,49        | 1,38        | 1,39        | 1,29        |
| 11/10/2005   | 5,52                       | 2,87        | 1,95        | 1,76        | 1,54        | 1,47        | 1,36        | 1,37        | 1,27        |
| 18/10/2005   | 5,52                       | 2,87        | 1,95        | 1,76        | 1,54        | 1,47        | 1,36        | 1,37        | 1,27        |
| 25/10/2005   | 5,52                       | 2,87        | 1,95        | 1,76        | 1,54        | 1,47        | 1,36        | 1,37        | 1,27        |
| 08/11/2005   | 5,52                       | 2,87        | 1,95        | 1,76        | 1,54        | 1,47        | 1,36        | 1,37        | 1,27        |
| 15/11/2005   | 5,52                       | 2,87        | 1,95        | 1,76        | 1,54        | 1,47        | 1,36        | 1,37        | 1,27        |
| 22/11/2005   | 5,52                       | 2,87        | 1,95        | 1,76        | 1,52        | 1,45        | 1,34        | 1,35        | 1,25        |
| 29/11/2005   | 5,52                       | 2,87        | 1,95        | 1,76        | 1,50        | 1,43        | 1,32        | 1,33        | 1,23        |
| 06/12/2005   | 5,52                       | 2,87        | 1,95        | 1,74        | 1,48        | 1,41        | 1,29        | 1,30        | 1,20        |
| 13/12/2005   | 5,52                       | 2,87        | 1,95        | 1,74        | 1,48        | 1,41        | 1,29        | 1,30        | 1,20        |
| 20/12/2005   | 5,54                       | 2,89        | 1,97        | 1,76        | 1,48        | 1,41        | 1,29        | 1,30        | 1,20        |
| 27/12/2005   | 5,58                       | 2,93        | 1,99        | 1,78        | 1,48        | 1,41        | 1,29        | 1,30        | 1,20        |
| <b>MEDIA</b> | <b>6,22</b>                | <b>3,31</b> | <b>2,35</b> | <b>2,15</b> | <b>1,83</b> | <b>1,67</b> | <b>1,49</b> | <b>1,41</b> | <b>1,33</b> |

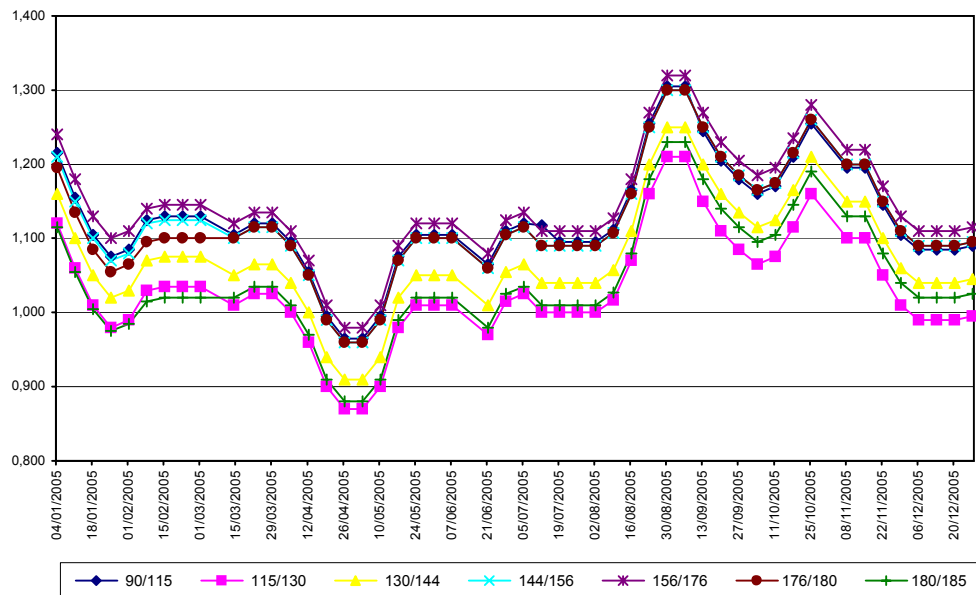
## REGGIO EMILIA 2005

| SETTIMANE    | SUINI DA MACELLO (€/Kg) |              |              |              |              |              |              |              |
|--------------|-------------------------|--------------|--------------|--------------|--------------|--------------|--------------|--------------|
|              | 90/115                  | 115/130      | 130/144      | 144/156      | 156/176      | 176/180      | 180/185      | > 185        |
| 04/01/2005   | 1,215                   | 1,120        | 1,160        | 1,210        | 1,240        | 1,195        | 1,115        | 1,065        |
| 11/01/2005   | 1,155                   | 1,060        | 1,100        | 1,150        | 1,180        | 1,135        | 1,055        | 1,005        |
| 18/01/2005   | 1,105                   | 1,010        | 1,050        | 1,100        | 1,130        | 1,085        | 1,005        | 0,955        |
| 25/01/2005   | 1,075                   | 0,980        | 1,020        | 1,070        | 1,100        | 1,055        | 0,975        | 0,925        |
| 01/02/2005   | 1,085                   | 0,990        | 1,030        | 1,080        | 1,110        | 1,065        | 0,985        | 0,935        |
| 08/02/2005   | 1,125                   | 1,030        | 1,070        | 1,120        | 1,140        | 1,095        | 1,015        | 0,965        |
| 15/02/2005   | 1,130                   | 1,035        | 1,075        | 1,125        | 1,145        | 1,100        | 1,020        | 0,970        |
| 22/02/2005   | 1,130                   | 1,035        | 1,075        | 1,125        | 1,145        | 1,100        | 1,020        | 0,970        |
| 01/03/2005   | 1,130                   | 1,035        | 1,075        | 1,125        | 1,145        | 1,100        | 1,020        | 0,970        |
| 14/03/2005   | 1,105                   | 1,010        | 1,050        | 1,100        | 1,120        | 1,100        | 1,020        | 0,970        |
| 22/03/2005   | 1,120                   | 1,025        | 1,065        | 1,115        | 1,135        | 1,115        | 1,035        | 0,985        |
| 29/03/2005   | 1,120                   | 1,025        | 1,065        | 1,115        | 1,135        | 1,115        | 1,035        | 0,985        |
| 05/04/2005   | 1,095                   | 1,000        | 1,040        | 1,090        | 1,110        | 1,090        | 1,010        | 0,960        |
| 12/04/2005   | 1,055                   | 0,960        | 1,000        | 1,050        | 1,070        | 1,050        | 0,970        | 0,920        |
| 19/04/2005   | 0,995                   | 0,900        | 0,940        | 0,990        | 1,010        | 0,990        | 0,910        | 0,860        |
| 26/04/2005   | 0,965                   | 0,870        | 0,910        | 0,960        | 0,980        | 0,960        | 0,880        | 0,830        |
| 03/05/2005   | 0,965                   | 0,870        | 0,910        | 0,960        | 0,980        | 0,960        | 0,880        | 0,830        |
| 10/05/2005   | 0,995                   | 0,900        | 0,940        | 0,990        | 1,010        | 0,990        | 0,910        | 0,860        |
| 17/05/2005   | 1,075                   | 0,980        | 1,020        | 1,070        | 1,090        | 1,070        | 0,990        | 0,940        |
| 24/05/2005   | 1,105                   | 1,010        | 1,050        | 1,100        | 1,120        | 1,100        | 1,020        | 0,970        |
| 31/05/2005   | 1,105                   | 1,010        | 1,050        | 1,100        | 1,120        | 1,100        | 1,020        | 0,970        |
| 07/06/2005   | 1,105                   | 1,010        | 1,050        | 1,100        | 1,120        | 1,100        | 1,020        | 0,970        |
| 21/06/2005   | 1,065                   | 0,970        | 1,010        | 1,060        | 1,080        | 1,060        | 0,980        | 0,930        |
| 28/06/2005   | 1,110                   | 1,015        | 1,055        | 1,105        | 1,125        | 1,105        | 1,025        | 0,975        |
| 05/07/2005   | 1,120                   | 1,025        | 1,065        | 1,115        | 1,135        | 1,115        | 1,035        | 0,985        |
| 12/07/2005   | 1,118                   | 1,000        | 1,040        | 1,090        | 1,110        | 1,090        | 1,010        | 0,960        |
| 19/07/2005   | 1,095                   | 1,000        | 1,040        | 1,090        | 1,110        | 1,090        | 1,010        | 0,960        |
| 26/07/2005   | 1,095                   | 1,000        | 1,040        | 1,090        | 1,110        | 1,090        | 1,010        | 0,960        |
| 02/08/2005   | 1,095                   | 1,000        | 1,040        | 1,090        | 1,110        | 1,090        | 1,010        | 0,960        |
| 09/08/2005   | 1,112                   | 1,017        | 1,057        | 1,107        | 1,127        | 1,107        | 1,027        | 0,985        |
| 16/08/2005   | 1,165                   | 1,070        | 1,110        | 1,160        | 1,180        | 1,160        | 1,080        | 1,048        |
| 23/08/2005   | 1,255                   | 1,160        | 1,200        | 1,250        | 1,270        | 1,250        | 1,180        | 1,148        |
| 30/08/2005   | 1,305                   | 1,210        | 1,250        | 1,300        | 1,320        | 1,300        | 1,230        | 1,198        |
| 06/09/2005   | 1,305                   | 1,210        | 1,250        | 1,300        | 1,320        | 1,300        | 1,230        | 1,198        |
| 13/09/2005   | 1,245                   | 1,150        | 1,200        | 1,250        | 1,270        | 1,250        | 1,180        | 1,148        |
| 20/09/2005   | 1,205                   | 1,110        | 1,160        | 1,210        | 1,230        | 1,210        | 1,140        | 1,108        |
| 27/09/2005   | 1,180                   | 1,085        | 1,135        | 1,185        | 1,205        | 1,185        | 1,115        | 1,083        |
| 04/10/2005   | 1,160                   | 1,065        | 1,115        | 1,165        | 1,185        | 1,165        | 1,095        | 1,063        |
| 11/10/2005   | 1,170                   | 1,075        | 1,125        | 1,175        | 1,195        | 1,175        | 1,105        | 1,073        |
| 18/10/2005   | 1,210                   | 1,115        | 1,165        | 1,215        | 1,235        | 1,215        | 1,145        | 1,113        |
| 25/10/2005   | 1,255                   | 1,160        | 1,210        | 1,260        | 1,280        | 1,260        | 1,190        | 1,158        |
| 08/11/2005   | 1,195                   | 1,100        | 1,150        | 1,200        | 1,220        | 1,200        | 1,130        | 1,098        |
| 15/11/2005   | 1,195                   | 1,100        | 1,150        | 1,200        | 1,220        | 1,200        | 1,130        | 1,098        |
| 22/11/2005   | 1,145                   | 1,050        | 1,100        | 1,150        | 1,170        | 1,150        | 1,080        | 1,048        |
| 29/11/2005   | 1,105                   | 1,010        | 1,060        | 1,110        | 1,130        | 1,110        | 1,040        | 1,008        |
| 06/12/2005   | 1,085                   | 0,990        | 1,040        | 1,090        | 1,110        | 1,090        | 1,020        | 0,988        |
| 13/12/2005   | 1,085                   | 0,990        | 1,040        | 1,090        | 1,110        | 1,090        | 1,020        | 0,988        |
| 20/12/2005   | 1,085                   | 0,990        | 1,040        | 1,090        | 1,110        | 1,090        | 1,020        | 0,988        |
| 27/12/2005   | 1,090                   | 0,995        | 1,045        | 1,095        | 1,115        | 1,095        | 1,025        | 0,993        |
| <b>MEDIA</b> | <b>1,127</b>            | <b>1,031</b> | <b>1,074</b> | <b>1,124</b> | <b>1,145</b> | <b>1,121</b> | <b>1,044</b> | <b>1,001</b> |

**REGGIO EMILIA 2005**  
**SUINI D'ALLEVAMENTO**  
 (Euro/Kg)



**REGGIO EMILIA 2005**  
**SUINI DA MACELLO**  
 (Euro/Kg)



nq = non quotat

