

FOSSANO 1993

CAMERA DI COMMERCIO DI FOSSANO

Categoria: SUINI VIVI

Prezzi: (Franco Partenza) Per Kg peso vivo - IVA esclusa

di Cosmino Giovanni Basile

SETTIMANE	SUINI D'ALLEVAMENTO €/Kg)							
	< a 15	da 25	da 30	da 40	da 50	da 65	da 80	da 100
13/01/1993	2,69	2,07	1,96	1,63	1,45	1,37	1,32	1,27
20/01/1993	2,76	2,12	2,01	1,68	1,47	1,39	1,32	1,27
27/01/1993	2,84	2,19	2,07	1,70	1,50	1,39	1,32	1,27
03/02/1993	2,89	2,22	2,07	1,70	1,50	1,39	1,32	1,27
10/02/1993	2,89	2,22	2,07	1,70	1,50	1,39	1,32	1,27
17/02/1993	2,92	2,22	2,07	1,68	1,42	1,34	1,24	1,19
24/02/1993	2,92	2,22	2,07	1,68	1,42	1,34	1,24	1,19
10/03/1993	2,94	2,25	2,09	1,70	1,45	1,34	1,24	1,19
17/03/1993	3,00	2,30	2,14	1,76	1,50	1,34	1,24	1,19
24/03/1993	3,00	2,30	2,14	1,76	1,50	1,34	1,24	1,19
31/03/1993	2,97	2,27	2,12	1,76	1,50	1,34	1,24	1,19
07/04/1993	2,97	2,27	2,12	1,76	1,50	1,34	1,24	1,19
14/04/1993	3,00	2,30	2,14	1,78	1,50	1,34	1,24	1,19
21/04/1993	3,00	2,30	2,14	1,78	1,50	1,34	1,24	1,19
28/04/1993	2,94	2,25	2,09	1,73	1,45	1,29	1,19	1,14
05/05/1993	2,89	2,19	2,04	1,68	1,39	1,24	1,14	1,08
19/05/1993	2,84	2,17	2,01	1,68	1,42	1,27	1,16	1,11
02/06/1993	2,63	2,01	1,86	1,58	1,37	1,21	1,14	1,08
09/06/1993	2,53	1,91	1,81	1,55	1,34	1,19	1,11	1,06
16/06/1993	2,43	1,83	1,73	1,47	1,32	1,16	1,08	1,03
23/06/1993	2,38	1,78	1,68	1,45	1,32	1,16	1,08	1,03
30/06/1993	2,38	1,78	1,65	1,42	1,32	1,16	1,08	1,03
07/07/1993	2,32	1,73	1,63	1,42	1,32	1,16	1,08	1,03
14/07/1993	2,27	1,70	1,63	1,42	1,37	1,21	1,14	1,08
21/07/1993	2,27	1,70	1,63	1,42	1,37	1,21	1,14	1,08
28/07/1993	2,27	1,70	1,63	1,42	1,37	1,21	1,14	1,08
04/08/1993	2,22	1,65	1,58	1,42	1,37	1,21	1,16	1,11
11/08/1993	2,14	1,58	1,50	1,39	1,37	1,21	1,19	1,14
18/08/1993	2,09	1,52	1,45	1,39	1,37	1,21	1,19	1,14
25/08/1993	2,01	1,45	1,39	1,34	1,32	1,21	1,19	1,14
01/09/1993	1,99	1,42	1,37	1,32	1,32	1,21	1,16	1,14
08/09/1993	1,99	1,42	1,37	1,32	1,32	1,21	1,16	1,14
15/09/1993	1,96	1,39	1,34	1,32	1,32	1,21	1,16	1,14
22/09/1993	2,01	1,45	1,39	1,37	1,34	1,27	1,21	1,19
29/09/1993	2,01	1,45	1,39	1,37	1,34	1,27	1,21	1,19
06/10/1993	1,99	1,42	1,37	1,37	1,34	1,27	1,21	1,19
13/10/1993	1,96	1,39	1,35	1,34	1,32	1,27	1,21	1,19
20/10/1993	1,96	1,39	1,35	1,34	1,32	1,27	1,21	1,19
27/10/1993	1,96	1,39	1,35	1,34	1,32	1,27	1,21	1,19
03/11/1993	1,96	1,39	1,35	1,32	1,29	1,24	1,19	1,16
10/11/1993	1,96	1,39	1,35	1,32	1,29	1,24	1,19	1,16
17/11/1993	1,94	1,37	1,30	1,24	1,21	1,16	1,11	1,08
24/11/1993	1,94	1,37	1,28	1,19	1,14	1,11	1,08	1,06
01/12/1993	1,94	1,37	1,22	1,16	1,11	1,08	1,06	1,03
09/12/1993	1,99	1,42	1,28	1,16	1,11	1,08	1,08	1,06
15/12/1993	2,04	1,47	1,33	1,19	1,16	1,14	1,12	1,09
22/12/1993	2,09	1,52	1,35	1,21	1,19	1,16	1,09	1,07
29/12/1993	2,17	1,58	1,40	1,24	1,21	1,16	1,09	1,07
MEDIA	2,40	1,79	1,68	1,48	1,36	1,25	1,18	1,14

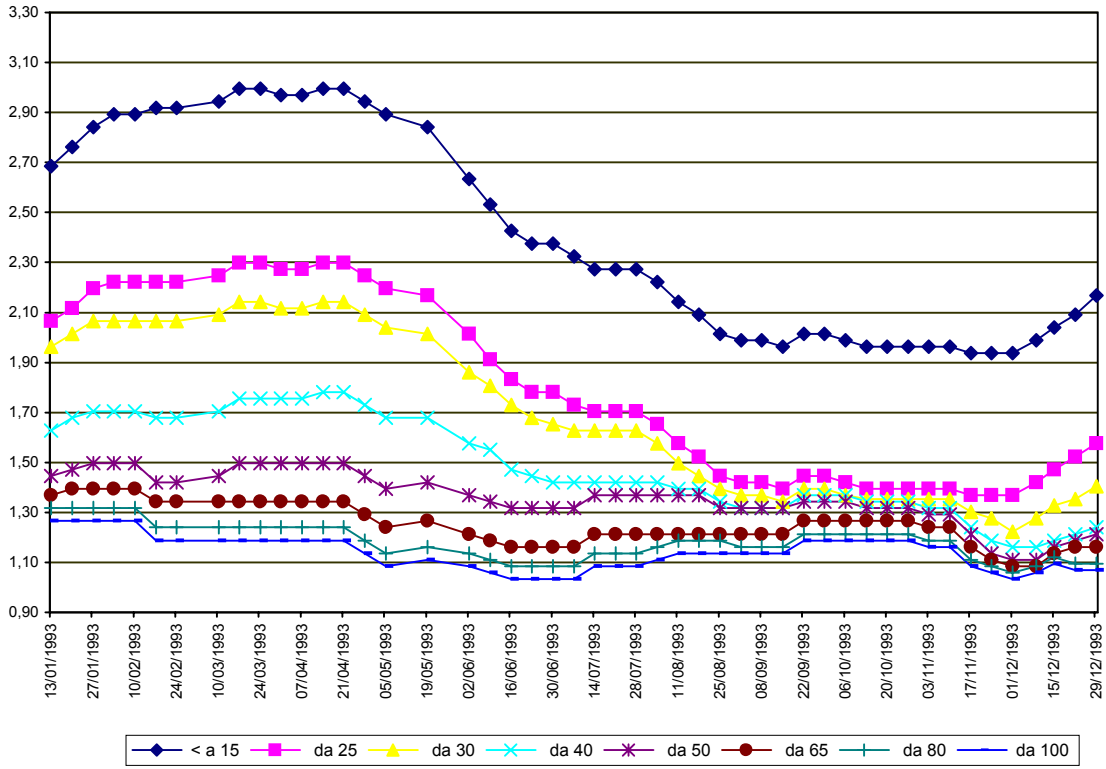
nq = non quotati

FOSSANO 1993

SETTIMANE	SUINI DA MACELLO (€/Kg)					
	90/115	di 115	di 130	di 145	160/180	> 180
13/01/1993	1,245	1,152	1,198	1,260	1,317	1,250
20/01/1993	1,245	1,152	1,198	1,260	1,317	1,250
27/01/1993	1,229	1,136	1,178	1,239	1,296	1,229
03/02/1993	1,229	1,136	1,178	1,239	1,296	1,229
10/02/1993	1,141	1,048	1,090	1,178	1,234	1,167
17/02/1993	1,136	1,007	1,048	1,136	1,193	1,126
24/02/1993	1,136	1,007	1,048	1,136	1,193	1,126
10/03/1993	1,136	1,007	1,048	1,136	1,193	1,126
17/03/1993	1,136	1,007	1,048	1,136	1,193	1,126
24/03/1993	1,110	0,981	1,023	1,095	1,152	1,085
31/03/1993	1,069	0,940	0,981	1,043	1,085	1,017
07/04/1993	1,079	0,950	0,992	1,054	1,095	1,028
14/04/1993	1,095	0,966	1,007	1,069	1,110	1,043
21/04/1993	1,069	0,940	0,981	1,043	1,085	1,017
28/04/1993	1,017	0,888	0,930	0,992	1,033	0,966
05/05/1993	1,017	0,888	0,930	0,976	1,017	0,950
19/05/1993	1,017	0,888	0,930	0,976	1,017	0,950
02/06/1993	0,940	0,847	0,878	0,924	0,966	0,899
09/06/1993	0,930	0,837	0,862	0,899	0,940	0,847
16/06/1993	0,930	0,837	0,862	0,899	0,940	0,847
23/06/1993	0,945	0,852	0,878	0,914	0,955	0,862
30/06/1993	0,997	0,873	0,899	0,930	0,971	0,878
07/07/1993	1,048	0,914	0,940	0,955	0,997	0,878
14/07/1993	1,048	0,914	0,940	0,955	0,997	0,878
21/07/1993	1,048	0,914	0,940	0,955	0,997	0,878
28/07/1993	1,059	0,924	0,950	0,966	1,007	0,888
04/08/1993	1,085	0,935	0,961	0,976	1,017	0,899
11/08/1993	1,085	0,935	0,961	0,976	1,017	0,899
18/08/1993	1,085	0,935	0,961	0,976	1,017	0,899
25/08/1993	1,085	0,935	0,961	0,976	1,017	0,899
01/09/1993	1,085	0,935	0,961	0,976	1,017	0,899
08/09/1993	1,100	0,950	0,976	0,992	1,033	0,914
15/09/1993	1,178	1,012	1,033	1,043	1,085	0,966
22/09/1993	1,270	1,090	1,110	1,121	1,162	1,043
29/09/1993	1,281	1,100	1,121	1,131	1,172	1,054
06/10/1993	1,260	1,079	1,100	1,110	1,152	1,033
13/10/1993	1,245	1,064	1,085	1,095	1,136	1,017
20/10/1993	1,265	1,085	1,105	1,116	1,157	1,038
27/10/1993	1,265	1,085	1,105	1,116	1,157	1,038
03/11/1993	1,239	1,069	1,090	1,110	1,157	1,038
10/11/1993	1,239	1,069	1,090	1,110	1,157	1,038
17/11/1993	1,203	1,033	1,054	1,074	1,121	1,002
24/11/1993	1,188	1,017	1,038	1,059	1,105	0,986
01/12/1993	1,198	1,028	1,048	1,069	1,116	0,997
09/12/1993	1,224	1,054	1,074	1,095	1,141	1,023
15/12/1993	1,224	1,054	1,074	1,095	1,141	1,023
22/12/1993	1,224	1,054	1,074	1,095	1,141	1,023
29/12/1993	1,214	1,043	1,064	1,085	1,131	1,012
MEDIA	1,131	0,991	1,021	1,058	1,103	1,006

nq = non quotati

FOSSANO 1993 SUINI D'ALLEVAMENTO (Euro/Kg)



FOSSANO 1993
SUINI DA MACELLO
 (Euro/Kg)

