

Mercato
Mercati nazionali

12/2010

5.17.1



COMMISSIONE UNICA NAZIONALE 2010

CAMERA DI COMMERCIO DI REGGIO EMILIA

Categoria: SUINI VIVI

Prezzi: (Franco Partenza) Per Kg peso vivo - IVA esclusa

di Cosmino Giovanni Basile

SETTIMANE	SUINI DA MACELLO (€/Kg)							
	CIRCUITO NON TUTELATO							
	90/115	115/130	130/144	144/152	152/160	160/176	176/180	> 180
07/01/2010	nq	1,069	1,084	1,114	1,134	1,164	1,094	1,064
14/01/2010	nq	1,079	1,094	1,124	1,144	1,174	1,104	1,074
21/01/2010	nq	nq	nq	nq	nq	nq	nq	nq
28/01/2010	nq	nq	nq	nq	nq	nq	nq	nq
04/02/2010	nq	nq	nq	nq	nq	nq	nq	nq
11/02/2010	nq	nq	nq	nq	nq	nq	nq	nq
18/02/2010	nq	nq	nq	nq	nq	nq	nq	nq
25/02/2010	nq	nq	nq	nq	nq	nq	nq	nq
04/03/2010	nq	1,010	1,025	1,055	1,075	1,105	1,035	1,005
11/03/2010	nq	nq	nq	nq	nq	nq	nq	nq
18/03/2010	nq	0,970	0,985	1,015	1,035	1,065	0,995	0,965
25/03/2010	nq	nq	nq	nq	nq	nq	nq	nq
01/04/2010	nq	nq	nq	nq	nq	nq	nq	nq
08/04/2010	nq	0,675	0,685	1,017	1,037	1,067	0,692	0,671
15/04/2010	nq	nq	nq	nq	nq	nq	nq	nq
22/04/2010	nq	0,930	0,945	0,975	0,995	1,025	0,955	0,925
29/04/2010	nq	0,945	0,960	0,990	1,010	1,040	0,970	0,940
06/05/2010	nq	0,945	0,960	0,990	1,010	1,040	0,970	0,940
13/05/2010	nq	0,930	0,945	0,975	0,995	1,025	0,955	0,925
20/05/2010	nq	0,925	0,940	0,970	0,990	1,020	0,950	0,920
27/05/2010	nq	0,965	0,980	1,010	1,030	1,060	0,990	0,960
03/06/2010	nq	0,970	0,985	1,015	1,035	1,065	0,995	0,965
10/06/2010	nq	1,000	1,015	1,045	1,065	1,095	1,025	0,995
17/06/2010	nq	1,030	1,045	1,075	1,095	1,125	1,055	1,025
24/06/2010	nq	1,043	1,058	1,088	1,108	1,138	1,068	1,038
01/07/2010	nq	0,983	0,998	1,028	1,048	1,078	1,008	0,978
08/07/2010	nq	nq	nq	nq	nq	nq	nq	nq
15/07/2010	nq	0,976	0,991	1,021	1,041	1,071	1,001	0,971
22/07/2010	nq	0,973	0,988	1,018	1,038	1,068	0,998	0,968
29/07/2010	nq	1,068	1,083	1,113	1,133	1,163	1,093	1,063
05/08/2010	nq	1,113	1,128	1,158	1,178	1,208	1,138	1,108
12/08/2010	nq	1,113	1,128	1,158	1,178	1,208	1,138	1,108
19/08/2010	nq	1,151	1,166	1,196	1,216	1,246	1,176	1,146
26/08/2010	nq	1,131	1,146	1,176	1,196	1,226	1,156	1,126
02/09/2010	nq	1,123	1,138	1,168	1,188	1,218	1,148	1,118
09/09/2010	nq	1,154	1,169	1,199	1,219	1,249	1,179	1,149
16/09/2010	nq	1,154	1,169	1,199	1,219	1,249	1,179	1,149
23/09/2010	nq	1,147	1,162	1,192	1,212	1,242	1,172	1,142
30/09/2010	nq	1,134	1,149	1,179	1,199	1,229	1,159	1,129
07/10/2010	nq	1,106	1,121	1,151	1,171	1,201	1,131	1,101
14/10/2010	nq	1,079	1,094	1,124	1,144	1,174	1,104	1,074
21/10/2010	nq	1,051	1,066	1,096	1,116	1,146	1,076	1,046
28/10/2010	nq	1,031	1,046	1,076	1,096	1,126	1,056	1,026
04/11/2010	nq	1,105	1,120	1,150	1,170	1,200	1,130	1,100
11/11/2010	nq	1,047	1,062	1,092	1,112	1,142	1,072	1,042
18/11/2010	nq	1,037	1,052	1,082	1,102	1,132	1,062	1,032
25/11/2010	nq	1,033	1,048	1,078	1,098	1,128	1,058	1,028
02/12/2010	nq	1,020	1,035	1,065	1,085	1,115	1,045	1,015
09/12/2010	nq	nq	nq	nq	nq	nq	nq	nq
16/12/2010	nq	1,015	1,030	1,060	1,080	1,110	1,040	1,010
23/12/2010	nq	1,036	1,051	1,081	1,101	1,131	1,061	1,031
30/12/2010	nq	1,036	1,051	1,081	1,101	1,131	1,061	1,031
MEDIA	nq	1,03	1,05	1,08	1,10	1,13	1,06	1,03

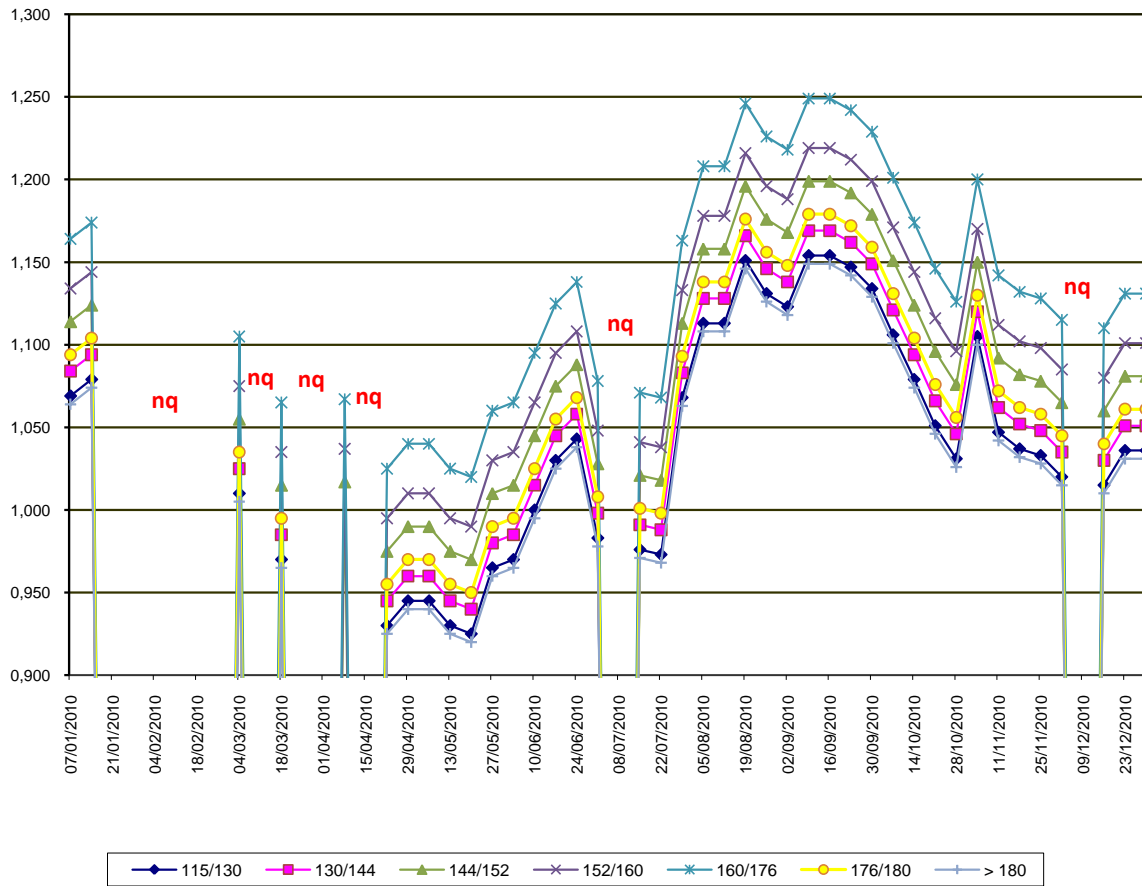
nq = non quotati

COMMISSIONE UNICA NAZIONALE 2010

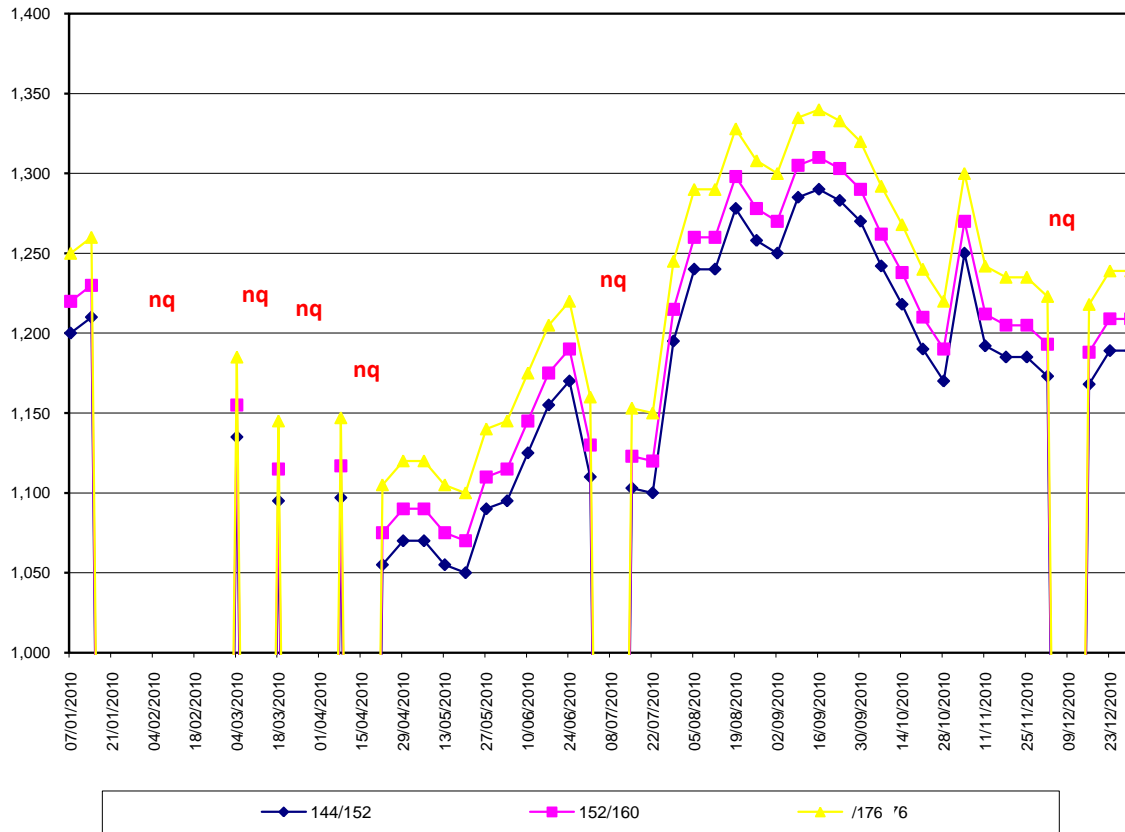
SETTIMANE	SUINI DA MACELLO (€/Kg)		
	CIRCUITO TUTELATO		
	144/152	152/160	160/176
07/01/2010	1,200	1,220	1,250
14/01/2010	1,210	1,230	1,260
21/01/2010	nq	nq	nq
28/01/2010	nq	nq	nq
04/02/2010	nq	nq	nq
11/02/2010	nq	nq	nq
18/02/2010	nq	nq	nq
25/02/2010	nq	nq	nq
04/03/2010	1,135	1,155	1,185
11/03/2010	nq	nq	nq
18/03/2010	1,095	1,115	1,145
25/03/2010	nq	nq	nq
01/04/2010	nq	nq	nq
08/04/2010	1,097	1,117	1,147
15/04/2010	nq	nq	nq
22/04/2010	1,055	1,075	1,105
29/04/2010	1,070	1,090	1,120
06/05/2010	1,070	1,090	1,120
13/05/2010	1,055	1,075	1,105
20/05/2010	1,050	1,070	1,100
27/05/2010	1,090	1,110	1,140
03/06/2010	1,095	1,115	1,145
10/06/2010	1,125	1,145	1,175
17/06/2010	1,155	1,175	1,205
24/06/2010	1,170	1,190	1,220
01/07/2010	1,110	1,130	1,160
08/07/2010	nq	nq	nq
15/07/2010	1,103	1,123	1,153
22/07/2010	1,100	1,120	1,150
29/07/2010	1,195	1,215	1,245
05/08/2010	1,240	1,260	1,290
12/08/2010	1,240	1,260	1,290
19/08/2010	1,278	1,298	1,328
26/08/2010	1,258	1,278	1,308
02/09/2010	1,250	1,270	1,300
09/09/2010	1,285	1,305	1,335
16/09/2010	1,290	1,310	1,340
23/09/2010	1,283	1,303	1,333
30/09/2010	1,270	1,290	1,320
07/10/2010	1,242	1,262	1,292
14/10/2010	1,218	1,238	1,268
21/10/2010	1,190	1,210	1,240
28/10/2010	1,170	1,190	1,220
04/11/2010	1,250	1,270	1,300
11/11/2010	1,192	1,212	1,242
18/11/2010	1,185	1,205	1,235
25/11/2010	1,185	1,205	1,235
02/12/2010	1,173	1,193	1,223
09/12/2010	nq	nq	nq
16/12/2010	1,168	1,188	1,218
23/12/2010	1,189	1,209	1,239
30/12/2010	1,189	1,209	1,239
MEDIA	nq	1,193	1,223

nq = non quotati

COMMISSIONE UNICA NAZIONALE 2010
TREND SUINI
CIRCUITO NON TUTELATO
 (Euro/Kg)



COMMISSIONE UNICA NAZIONALE 2010
TREND SUINI
CIRCUITO TUTELATO
 (Euro/Kg)



nq = non quota