



Mercato
Mercati nazionali

12/2006

5.5.16.2



REGGIO EMILIA 2006

CAMERA DI COMMERCIO DI REGGIO EMILIA

Categoria: SUINI VIVI

Prezzi: (Franco Partenza) Per Kg peso vivo - IVA esclusa

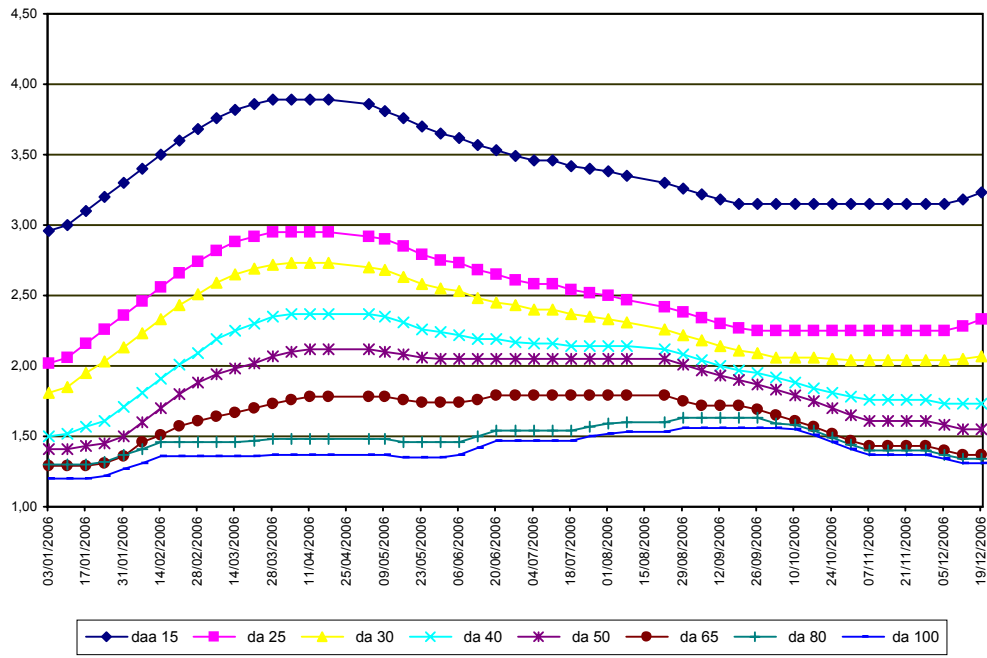
di Cosmino Giovanni Basile

SETTIMANE	SUINI D'ALLEVAMENTO (€/Kg)								
	da 6	daa 15	da 25	da 30	da 40	da 50	da 65	da 80	da 100
03/01/2006	5,61	2,96	2,02	1,81	1,50	1,41	1,29	1,30	1,20
10/01/2006	5,64	3,00	2,06	1,85	1,52	1,41	1,29	1,30	1,20
17/01/2006	5,69	3,10	2,16	1,95	1,57	1,43	1,29	1,30	1,20
24/01/2006	5,79	3,20	2,26	2,03	1,61	1,45	1,31	1,32	1,22
31/01/2006	5,89	3,30	2,36	2,13	1,71	1,50	1,36	1,37	1,27
07/02/2006	5,99	3,40	2,46	2,23	1,81	1,60	1,46	1,41	1,31
14/02/2006	6,09	3,50	2,56	2,33	1,91	1,70	1,51	1,46	1,36
21/02/2006	6,19	3,60	2,66	2,43	2,01	1,80	1,575	1,46	1,36
28/02/2006	6,24	3,68	2,74	2,51	2,09	1,88	1,61	1,46	1,36
07/03/2006	6,29	3,76	2,82	2,59	2,19	1,94	1,64	1,46	1,36
14/03/2006	6,35	3,82	2,88	2,65	2,25	1,98	1,67	1,46	1,36
21/03/2006	6,39	3,86	2,92	2,69	2,30	2,02	1,70	1,47	1,36
28/03/2006	6,42	3,89	2,95	2,72	2,35	2,07	1,73	1,48	1,37
04/04/2006	6,42	3,89	2,95	2,73	2,37	2,10	1,76	1,48	1,37
11/04/2006	6,42	3,89	2,95	2,73	2,37	2,12	1,78	1,48	1,37
18/04/2006	6,42	3,89	2,95	2,73	2,37	2,12	1,78	1,48	1,37
03/05/2006	6,39	3,86	2,92	2,70	2,37	2,12	1,78	1,48	1,37
09/05/2006	6,34	3,81	2,90	2,68	2,35	2,10	1,78	1,48	1,37
16/05/2006	6,29	3,76	2,85	2,63	2,31	2,08	1,76	1,46	1,35
23/05/2006	6,23	3,70	2,79	2,58	2,26	2,06	1,74	1,46	1,35
30/05/2006	6,23	3,65	2,75	2,55	2,24	2,05	1,74	1,46	1,35
06/06/2006	6,23	3,62	2,73	2,53	2,22	2,05	1,74	1,46	1,37
13/06/2006	6,23	3,57	2,68	2,48	2,19	2,05	1,76	1,50	1,42
20/06/2006	6,23	3,53	2,65	2,45	2,19	2,05	1,79	1,54	1,47
27/06/2006	6,23	3,49	2,61	2,43	2,17	2,05	1,79	1,54	1,47
04/07/2006	6,20	3,46	2,58	2,40	2,16	2,05	1,79	1,54	1,47
11/07/2006	6,20	3,46	2,58	2,40	2,16	2,05	1,79	1,54	1,47
18/07/2006	6,16	3,42	2,54	2,37	2,14	2,05	1,79	1,54	1,47
25/07/2006	6,16	3,40	2,52	2,35	2,14	2,05	1,79	1,57	1,50
01/08/2006	6,14	3,38	2,50	2,33	2,14	2,05	1,79	1,59	1,52
08/08/2006	6,09	3,35	2,47	2,31	2,14	2,05	1,79	1,60	1,53
22/08/2006	6,04	3,30	2,42	2,26	2,12	2,05	1,79	1,60	1,53
29/08/2006	6,00	3,26	2,38	2,22	2,08	2,01	1,75	1,63	1,56
05/09/2006	5,96	3,22	2,34	2,18	2,04	1,97	1,72	1,63	1,56
12/09/2006	5,92	3,18	2,30	2,14	2,00	1,93	1,72	1,63	1,56
19/09/2006	5,89	3,15	2,27	2,11	1,97	1,90	1,72	1,63	1,56
26/09/2006	5,89	3,15	2,25	2,09	1,95	1,87	1,69	1,63	1,56
03/10/2006	5,89	3,15	2,25	2,06	1,92	1,83	1,65	1,59	1,56
10/10/2006	5,89	3,15	2,25	2,06	1,88	1,79	1,61	1,58	1,55
17/10/2006	5,89	3,15	2,25	2,06	1,84	1,75	1,57	1,54	1,51
24/10/2006	5,89	3,15	2,25	2,05	1,81	1,70	1,52	1,49	1,46
31/10/2006	5,89	3,15	2,25	2,04	1,78	1,65	1,47	1,44	1,41
07/11/2006	5,89	3,15	2,25	2,04	1,76	1,61	1,43	1,40	1,37
14/11/2006	5,89	3,15	2,25	2,04	1,76	1,61	1,43	1,40	1,37
21/11/2006	5,89	3,15	2,25	2,04	1,76	1,61	1,43	1,40	1,37
28/11/2006	5,89	3,15	2,25	2,04	1,76	1,61	1,43	1,40	1,37
05/12/2006	5,89	3,15	2,25	2,04	1,73	1,58	1,40	1,37	1,34
12/12/2006	5,92	3,18	2,28	2,05	1,73	1,55	1,37	1,34	1,31
19/12/2006	5,97	3,23	2,33	2,07	1,73	1,55	1,37	1,34	1,31
MEDIA	6,08	3,42	2,51	2,30	2,01	1,86	1,62	1,48	1,40

REGGIO EMILIA 2006

SETTIMANE	SUINI DA MACELLO (€/Kg)							
	90/115	115/130	130/144	144/156	156/176	176/180	180/185	> 185
03/01/2006	1,100	1,005	1,055	1,105	1,125	1,105	1,035	1,003
10/01/2006	1,115	1,020	1,070	1,120	1,140	1,120	1,050	1,018
17/01/2006	1,155	1,060	1,110	1,160	1,180	1,160	1,090	1,058
24/01/2006	1,245	1,150	1,200	1,250	1,270	1,250	1,180	1,148
31/01/2006	1,325	1,230	1,280	1,330	1,350	1,330	1,260	1,228
07/02/2006	1,325	1,230	1,280	1,330	1,350	1,330	1,260	1,228
14/02/2006	1,305	1,210	1,260	1,310	1,330	1,310	1,240	1,208
21/02/2006	1,235	1,140	1,190	1,240	1,260	1,240	1,170	1,138
28/02/2006	1,200	1,105	1,155	1,205	1,225	1,205	1,135	1,103
07/03/2006	1,200	1,105	1,155	1,205	1,225	1,205	1,135	1,103
14/03/2006	1,215	1,120	1,170	1,220	1,240	1,220	1,150	1,118
21/03/2006	1,230	1,135	1,185	1,235	1,255	1,235	1,165	1,133
28/03/2006	1,240	1,145	1,195	1,245	1,265	1,245	1,175	1,143
04/04/2006	1,230	1,135	1,185	1,235	1,255	1,235	1,165	1,133
11/04/2006	1,195	1,100	1,150	1,200	1,220	1,200	1,130	1,098
18/04/2006	1,195	1,100	1,150	1,200	1,220	1,200	1,130	1,098
03/05/2006	1,145	1,050	1,100	1,150	1,170	1,150	1,080	1,048
09/05/2006	1,115	1,020	1,070	1,120	1,140	1,120	1,050	1,018
16/05/2006	1,055	0,960	1,010	1,060	1,080	1,060	0,990	0,958
23/05/2006	1,095	1,000	1,050	1,070	1,085	1,065	0,995	0,963
30/05/2006	1,130	1,035	1,085	1,105	1,120	1,100	1,030	1,000
06/06/2006	1,190	1,095	1,145	1,165	1,180	1,170	1,100	1,070
13/06/2006	1,260	1,165	1,215	1,235	1,250	1,240	1,170	1,140
20/06/2006	1,320	1,225	1,275	1,295	1,310	1,300	1,230	1,200
27/06/2006	1,320	1,225	1,275	1,295	1,310	1,300	1,230	1,200
04/07/2006	1,285	1,190	1,240	1,260	1,275	1,265	1,195	1,165
11/07/2006	1,285	1,145	1,195	1,215	1,230	1,220	1,150	1,120
18/07/2006	1,295	1,155	1,205	1,225	1,240	1,230	1,160	1,130
25/07/2006	1,385	1,245	1,295	1,315	1,330	1,320	1,250	1,220
01/08/2006	1,395	1,255	1,305	1,325	1,340	1,330	1,260	1,230
08/08/2006	1,395	1,255	1,305	1,325	1,340	1,330	1,260	1,230
22/08/2006	1,455	1,315	1,365	1,385	1,400	1,390	1,320	1,290
29/08/2006	1,465	1,325	1,375	1,395	1,410	1,400	1,330	1,300
05/09/2006	1,465	1,325	1,375	1,395	1,410	1,400	1,330	1,300
19/09/2006	1,435	1,295	1,345	1,365	1,380	1,370	1,300	1,270
26/09/2006	1,435	1,295	1,345	1,365	1,380	1,370	1,300	1,270
03/10/2006	1,425	1,285	1,335	1,355	1,370	1,360	1,290	1,260
10/10/2006	1,375	1,235	1,285	1,305	1,320	1,310	1,240	1,210
17/10/2006	1,335	1,195	1,245	1,265	1,280	1,270	1,200	1,170
24/10/2006	1,300	1,195	1,245	1,265	1,280	1,270	1,200	1,170
31/10/2006	1,300	1,195	1,245	1,265	1,280	1,270	1,200	1,170
07/11/2006	1,295	1,190	1,240	1,260	1,275	1,265	1,195	1,165
14/11/2006	1,280	1,175	1,225	1,245	1,260	1,250	1,180	1,150
21/11/2006	1,290	1,185	1,235	1,255	1,270	1,260	1,190	1,160
28/11/2006	1,290	1,185	1,235	1,255	1,270	1,260	1,190	1,160
05/12/2006	1,280	1,175	1,225	1,245	1,260	1,250	1,180	1,150
12/12/2006	1,235	1,130	1,180	1,200	1,215	1,205	1,135	1,105
19/12/2006	1,200	1,095	1,145	1,165	1,180	1,170	1,100	1,070
MEDIA	1,272	1,163	1,213	1,244	1,261	1,247	1,177	1,146

REGGIO EMILIA 2006
SUINI D'ALLEVAMENTO
 (Euro/Kg)



REGGIO EMILIA 2006
SUINI DA MACELLO
 (Euro/Kg)

