

Mercato
Mercati nazionali

5.4.14.2



BRESCIA 2004

CAMERA DI COMMERCIO DI BRESCIA

Categoria: SUINI VIVI

Prezzi: (Franco Partenza) Per Kg peso vivo - IVA esclusa

di Cosmino Giovanni Basile

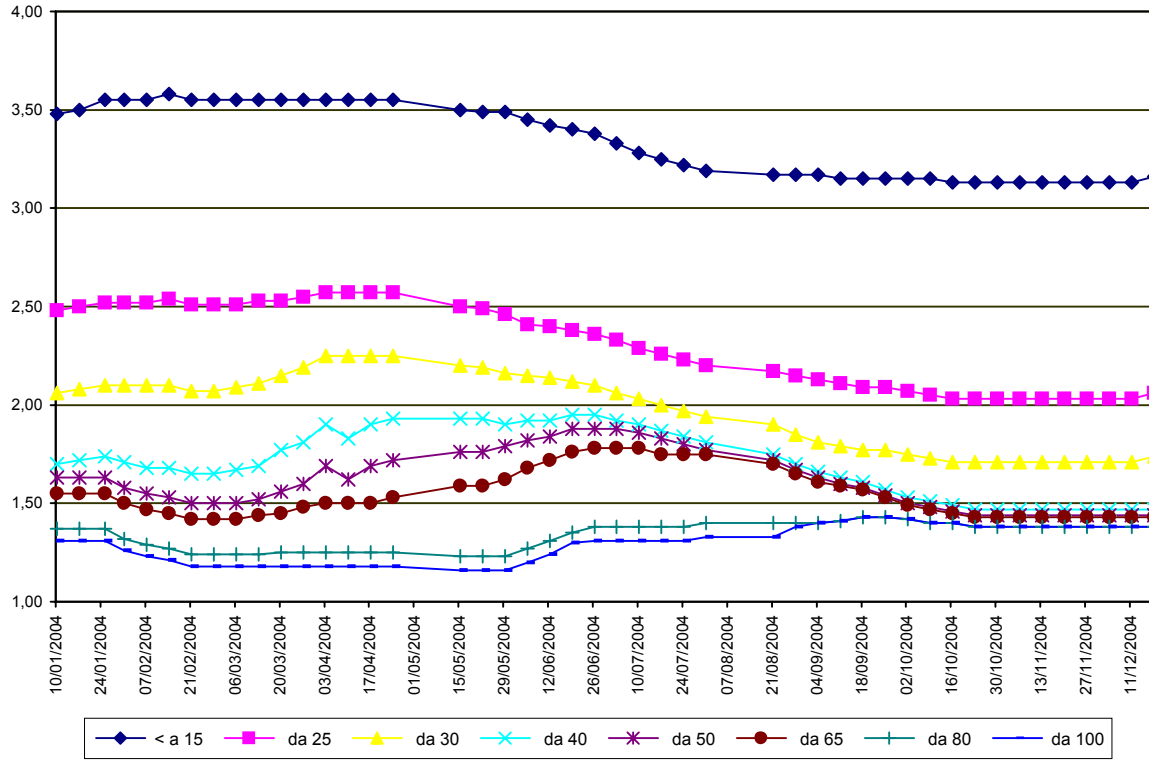
SETTIMANE	SUINI D'ALLEVAMENTO €/Kg)							
	< a 15	da 25	da 30	da 40	da 50	da 65	da 80	da 100
10/01/2004	3,48	2,48	2,06	1,70	1,63	1,55	1,37	1,31
17/01/2004	3,50	2,50	2,08	1,72	1,63	1,55	1,37	1,31
25/01/2004	3,55	2,52	2,10	1,74	1,63	1,55	1,37	1,31
31/01/2004	3,55	2,52	2,10	1,71	1,58	1,50	1,32	1,26
07/02/2004	3,55	2,52	2,10	1,68	1,55	1,47	1,29	1,23
14/02/2004	3,58	2,54	2,10	1,68	1,53	1,45	1,27	1,21
21/02/2004	3,55	2,51	2,07	1,65	1,50	1,42	1,24	1,18
28/02/2004	3,55	2,51	2,07	1,65	1,50	1,42	1,24	1,18
06/03/2004	3,55	2,51	2,09	1,67	1,50	1,42	1,24	1,18
13/03/2004	3,55	2,53	2,11	1,69	1,52	1,44	1,24	1,18
20/03/2004	3,55	2,53	2,15	1,77	1,56	1,45	1,25	1,18
27/03/2004	3,55	2,55	2,19	1,81	1,60	1,48	1,25	1,18
03/04/2004	3,55	2,57	2,25	1,90	1,69	1,50	1,25	1,18
10/04/2004	3,55	2,57	2,25	1,83	1,62	1,50	1,25	1,18
17/04/2004	3,55	2,57	2,25	1,90	1,69	1,50	1,25	1,18
24/04/2004	3,55	2,57	2,25	1,93	1,72	1,53	1,25	1,18
15/05/2004	3,50	2,50	2,20	1,93	1,76	1,59	1,23	1,16
22/05/2004	3,49	2,49	2,19	1,93	1,76	1,59	1,23	1,16
29/05/2004	3,49	2,46	2,16	1,90	1,79	1,62	1,23	1,16
05/06/2004	3,45	2,41	2,15	1,92	1,82	1,68	1,27	1,20
12/06/2004	3,42	2,40	2,14	1,92	1,84	1,72	1,31	1,24
19/06/2004	3,40	2,38	2,12	1,95	1,88	1,76	1,35	1,30
26/06/2004	3,38	2,36	2,10	1,95	1,88	1,78	1,38	1,31
03/07/2004	3,33	2,33	2,06	1,92	1,88	1,78	1,38	1,31
10/07/2004	3,28	2,29	2,03	1,90	1,86	1,78	1,38	1,31
17/07/2004	3,25	2,26	2,00	1,87	1,83	1,75	1,38	1,31
24/07/2004	3,22	2,23	1,97	1,84	1,80	1,75	1,38	1,31
31/07/2004	3,19	2,20	1,94	1,81	1,77	1,75	1,40	1,33
21/08/2004	3,17	2,17	1,90	1,75	1,72	1,70	1,40	1,33
28/08/2004	3,17	2,15	1,85	1,70	1,67	1,65	1,40	1,38
04/09/2004	3,17	2,13	1,81	1,66	1,63	1,61	1,40	1,40
11/09/2004	3,15	2,11	1,79	1,63	1,60	1,59	1,41	1,41
18/09/2004	3,15	2,09	1,77	1,61	1,58	1,57	1,43	1,43
25/09/2004	3,15	2,09	1,77	1,57	1,54	1,53	1,43	1,43
02/10/2004	3,15	2,07	1,75	1,53	1,50	1,49	1,42	1,42
09/10/2004	3,15	2,05	1,73	1,51	1,48	1,47	1,40	1,40
16/10/2004	3,13	2,03	1,71	1,49	1,46	1,45	1,40	1,40
23/10/2004	3,13	2,03	1,71	1,47	1,44	1,43	1,38	1,38
30/10/2004	3,13	2,03	1,71	1,47	1,44	1,43	1,38	1,38
06/11/2004	3,13	2,03	1,71	1,47	1,44	1,43	1,38	1,38
13/11/2004	3,13	2,03	1,71	1,47	1,44	1,43	1,38	1,38
20/11/2004	3,13	2,03	1,71	1,47	1,44	1,43	1,38	1,38
27/11/2004	3,13	2,03	1,71	1,47	1,44	1,43	1,38	1,38
04/12/2004	3,13	2,03	1,71	1,47	1,44	1,43	1,38	1,38
11/12/2004	3,13	2,03	1,71	1,47	1,44	1,43	1,38	1,38
18/12/2004	3,16	2,06	1,74	1,47	1,44	1,43	1,38	1,38
MEDIA	3,34	2,30	1,97	1,71	1,62	1,55	1,34	1,29

BRESCIA 2004

SETTIMANE	SUINI DA MACELLO (€/Kg)							
	90/115	115/130	130/144	144/156	156/176	176/180	180/185	> 185
10/01/2004	nq	1,100	1,150	1,180	1,210	1,180	1,090	1,050
17/01/2004	nq	1,050	1,100	1,140	1,170	1,140	1,050	1,010
25/01/2004	nq	1,020	1,080	1,110	1,140	1,110	1,020	0,980
31/01/2004	nq	1,020	1,080	1,110	1,140	1,110	1,020	0,980
07/02/2004	nq	1,030	1,090	1,120	1,150	1,120	1,030	0,990
14/02/2004	nq	1,000	1,060	1,090	1,130	1,100	1,010	0,970
21/02/2004	nq	0,970	1,030	1,060	1,100	1,070	0,980	0,940
28/02/2004	nq	0,970	1,030	1,060	1,100	1,070	0,980	0,940
06/03/2004	nq	0,990	1,050	1,080	1,120	1,090	1,000	0,960
13/03/2004	nq	1,020	1,080	1,110	1,150	1,120	1,030	0,990
20/03/2004	nq	1,040	1,100	1,120	1,160	1,130	1,040	1,000
27/03/2004	nq	1,040	1,100	1,120	1,160	1,130	1,040	1,000
03/04/2004	nq	1,040	1,100	1,120	1,160	1,130	1,040	1,000
10/04/2004	nq	1,040	1,100	1,120	1,160	1,130	1,040	1,000
17/04/2004	nq	1,040	1,100	1,120	1,160	1,130	1,040	1,000
24/04/2004	nq	1,000	1,060	1,080	1,120	1,090	1,000	0,960
15/05/2004	nq	0,900	0,940	0,970	1,000	0,970	0,870	0,850
22/05/2004	nq	0,930	0,970	1,020	1,050	1,020	0,900	0,870
29/05/2004	nq	1,020	1,080	1,150	1,250	1,180	1,100	1,000
05/06/2004	nq	1,100	1,120	1,190	1,260	1,200	1,110	1,050
12/06/2004	nq	1,180	1,230	1,280	1,310	1,250	1,150	1,100
19/06/2004	nq	1,230	1,280	1,320	1,350	1,300	1,200	1,150
26/06/2004	nq	1,230	1,260	1,300	1,330	1,280	1,180	1,150
03/07/2004	nq	1,200	1,230	1,270	1,300	1,250	1,150	1,120
10/07/2004	nq	1,200	1,230	1,270	1,300	1,250	1,150	1,120
17/07/2004	nq	1,150	1,180	1,220	1,250	1,200	1,100	1,070
24/07/2004	nq	1,200	1,230	1,290	1,310	1,280	1,150	1,100
31/07/2004	nq	1,220	1,250	1,310	1,330	1,300	1,170	1,120
21/08/2004	nq	1,250	1,280	1,350	1,360	1,310	1,170	1,120
28/08/2004	nq	1,310	1,340	1,410	1,420	1,370	1,230	1,180
04/09/2004	nq	1,350	1,380	1,450	1,460	1,410	1,270	1,230
11/09/2004	nq	1,360	1,390	1,460	1,470	1,420	1,280	1,240
18/09/2004	nq	1,360	1,390	1,460	1,470	1,420	1,280	1,240
25/09/2004	nq	1,340	1,370	1,440	1,450	1,400	1,260	1,220
02/10/2004	nq	1,310	1,330	1,410	1,420	1,370	1,230	1,190
09/10/2004	nq	1,290	1,310	1,390	1,400	1,350	1,210	1,170
16/10/2004	nq	1,290	1,310	1,390	1,400	1,350	1,210	1,170
23/10/2004	nq	1,310	1,330	1,410	1,420	1,370	1,230	1,190
30/10/2004	nq	1,330	1,350	1,430	1,440	1,390	1,250	1,210
06/11/2004	nq	1,350	1,370	1,450	1,460	1,410	1,270	1,230
13/11/2004	nq	1,350	1,370	1,450	1,460	1,410	1,270	1,230
20/11/2004	nq	1,350	1,370	1,450	1,460	1,410	1,270	1,230
27/11/2004	nq	1,320	1,340	1,420	1,430	1,380	1,240	1,200
04/12/2004	nq	1,290	1,310	1,390	1,400	1,350	1,210	1,170
11/12/2004	nq	1,260	1,280	1,360	1,370	1,320	1,180	1,140
18/12/2004	nq	1,210	1,230	1,310	1,320	1,270	1,130	1,090
MEDIA	nq	1,164	1,203	1,256	1,282	1,240	1,127	1,085

nq = non quotati

BRESCIA 2004
SUINI D'ALLEVAMENTO
 (Euro/Kg)



BRESCIA 2004
SUINI DA MACELLO
 (Euro/Kg)

