



Mercato
Mercati nazionali

12/2006

5.11.13.2



PERUGIA 2006

CAMERA DI COMMERCIO DI PERUGIA

Categoria: SUINI VIVI

Prezzi: (Franco Partenza) Per Kg peso vivo - IVA esclusa

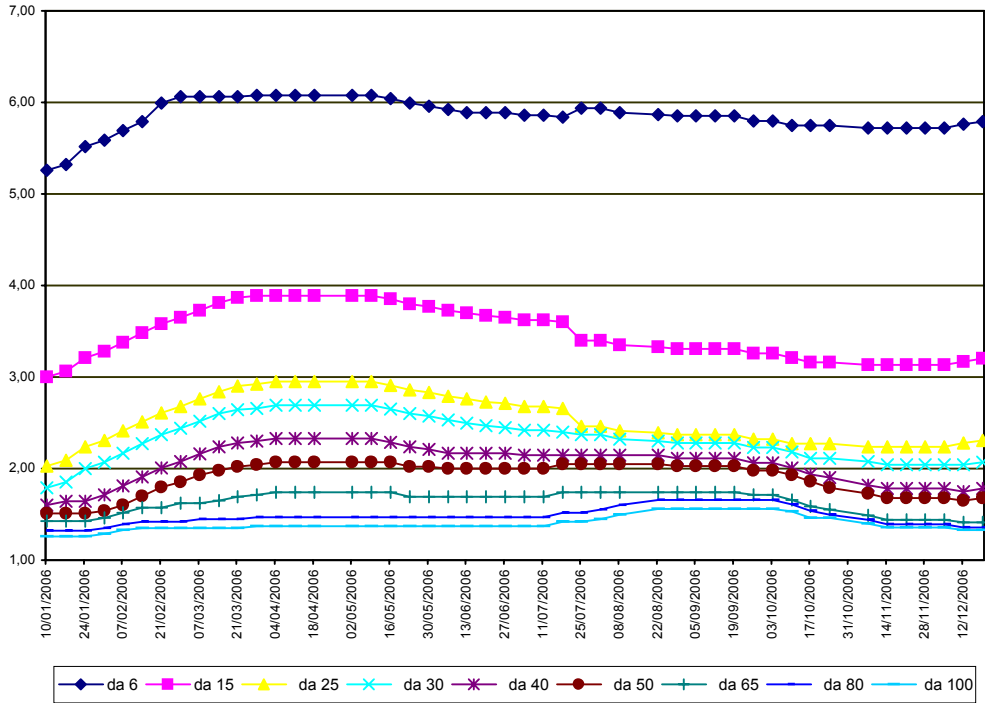
di Cosmino Giovanni Basile

SETTIMANE	SUINI D'ALLEVAMENTO (€/Kg)								
	da 6	da 15	da 25	da 30	da 40	da 50	da 65	da 80	da 100
10/01/2006	5,26	3,00	2,03	1,79	1,60	1,51	1,43	1,32	1,26
17/01/2006	5,32	3,06	2,09	1,85	1,64	1,51	1,43	1,32	1,26
24/01/2006	5,52	3,21	2,24	2,00	1,64	1,51	1,43	1,32	1,26
31/01/2006	5,59	3,28	2,31	2,07	1,71	1,54	1,46	1,35	1,29
07/02/2006	5,69	3,38	2,41	2,17	1,81	1,60	1,52	1,39	1,33
14/02/2006	5,79	3,48	2,51	2,27	1,91	1,70	1,57	1,42	1,35
21/02/2006	5,99	3,58	2,61	2,37	2,01	1,80	1,57	1,42	1,35
28/02/2006	6,06	3,65	2,68	2,44	2,08	1,85	1,62	1,42	1,35
07/03/2006	6,06	3,73	2,76	2,52	2,16	1,93	1,62	1,45	1,35
14/03/2006	6,06	3,81	2,84	2,60	2,24	1,98	1,65	1,45	1,35
21/03/2006	6,06	3,87	2,90	2,64	2,28	2,02	1,69	1,45	1,35
28/03/2006	6,08	3,89	2,92	2,66	2,30	2,04	1,71	1,47	1,37
04/04/2006	6,08	3,89	2,95	2,69	2,33	2,07	1,74	1,47	1,37
11/04/2006	6,08	3,89	2,95	2,69	2,33	2,07	1,74	1,47	1,37
18/04/2006	6,08	3,89	2,95	2,69	2,33	2,07	1,74	1,47	1,37
02/05/2006	6,08	3,89	2,95	2,69	2,33	2,07	1,74	1,47	1,37
09/05/2006	6,08	3,89	2,95	2,69	2,33	2,07	1,74	1,47	1,37
16/05/2006	6,04	3,85	2,91	2,65	2,29	2,07	1,74	1,47	1,37
23/05/2006	5,99	3,80	2,86	2,60	2,24	2,02	1,69	1,47	1,37
30/05/2006	5,96	3,77	2,83	2,57	2,21	2,02	1,69	1,47	1,37
06/06/2006	5,92	3,73	2,79	2,53	2,17	2,00	1,69	1,47	1,37
13/06/2006	5,89	3,70	2,76	2,50	2,17	2,00	1,69	1,47	1,37
20/06/2006	5,89	3,67	2,73	2,47	2,17	2,00	1,69	1,47	1,37
27/06/2006	5,89	3,65	2,71	2,45	2,17	2,00	1,69	1,47	1,37
04/07/2006	5,86	3,62	2,68	2,42	2,15	2,00	1,69	1,47	1,37
11/07/2006	5,86	3,62	2,68	2,42	2,15	2,00	1,69	1,47	1,37
18/07/2006	5,84	3,60	2,66	2,40	2,15	2,05	1,74	1,52	1,42
25/07/2006	5,94	3,40	2,46	2,37	2,15	2,05	1,74	1,52	1,42
01/08/2006	5,94	3,40	2,46	2,37	2,15	2,05	1,74	1,55	1,45
08/08/2006	5,89	3,35	2,41	2,32	2,15	2,05	1,74	1,60	1,50
22/08/2006	5,87	3,33	2,39	2,30	2,15	2,05	1,74	1,66	1,56
29/08/2006	5,85	3,31	2,37	2,28	2,11	2,03	1,74	1,66	1,56
05/09/2006	5,85	3,31	2,37	2,28	2,11	2,03	1,74	1,66	1,56
12/09/2006	5,85	3,31	2,37	2,28	2,11	2,03	1,74	1,66	1,56
19/09/2006	5,85	3,31	2,37	2,28	2,11	2,03	1,74	1,66	1,56
26/09/2006	5,80	3,26	2,32	2,23	2,06	1,98	1,71	1,66	1,56
03/10/2006	5,80	3,26	2,32	2,23	2,06	1,98	1,71	1,66	1,56
10/10/2006	5,75	3,21	2,27	2,18	2,01	1,93	1,66	1,61	1,53
17/10/2006	5,75	3,16	2,27	2,11	1,94	1,86	1,59	1,54	1,46
24/10/2006	5,75	3,16	2,27	2,11	1,90	1,79	1,55	1,50	1,46
07/11/2006	5,72	3,13	2,24	2,08	1,82	1,73	1,49	1,44	1,40
14/11/2006	5,72	3,13	2,24	2,04	1,78	1,68	1,44	1,39	1,36
21/11/2006	5,72	3,13	2,24	2,04	1,78	1,68	1,44	1,39	1,36
28/11/2006	5,72	3,13	2,24	2,04	1,78	1,68	1,44	1,39	1,36
05/12/2006	5,72	3,13	2,24	2,04	1,78	1,68	1,44	1,39	1,36
12/12/2006	5,76	3,17	2,28	2,04	1,75	1,65	1,41	1,36	1,33
19/12/2006	5,79	3,20	2,31	2,07	1,78	1,68	1,41	1,36	1,33
MEDIA	5,89	3,47	2,53	2,33	2,05	1,90	1,63	1,48	1,40

PERUGIA 2006

SETTIMANE	SUINI DA MACELLO (€/Kg)							
	90/115	115/130	130/144	144/156	156/176	176/180	180/185	> 185
10/01/2006	1,295	1,120	1,130	1,160	1,200	1,150	1,060	0,970
17/01/2006	1,335	1,160	1,170	1,200	1,240	1,190	1,100	1,010
24/01/2006	1,385	1,210	1,220	1,250	1,290	1,240	1,150	1,060
31/01/2006	1,465	1,290	1,300	1,330	1,370	1,320	1,230	1,140
07/02/2006	1,465	1,290	1,300	1,330	1,370	1,320	1,230	1,140
14/02/2006	1,445	1,270	1,280	1,310	1,350	1,300	1,210	1,120
21/02/2006	1,415	1,240	1,250	1,280	1,320	1,270	1,180	1,090
28/02/2006	1,385	1,210	1,220	1,250	1,290	1,240	1,150	1,060
07/03/2006	1,355	1,180	1,190	1,220	1,260	1,210	1,150	1,060
14/03/2006	1,355	1,180	1,190	1,220	1,260	1,210	1,150	1,060
21/03/2006	1,375	1,200	1,210	1,240	1,280	1,230	1,170	1,080
28/03/2006	1,395	1,220	1,230	1,260	1,300	1,250	1,190	1,100
04/04/2006	1,345	1,190	1,200	1,260	1,300	1,250	1,190	1,100
11/04/2006	1,315	1,160	1,170	1,230	1,270	1,220	1,160	1,070
18/04/2006	1,315	1,160	1,170	1,230	1,270	1,220	1,160	1,070
02/05/2006	1,295	1,140	1,150	1,210	1,250	1,200	1,140	1,050
09/05/2006	1,275	1,120	1,130	1,190	1,230	1,180	1,120	1,030
16/05/2006	1,225	1,070	1,080	1,140	1,180	1,130	1,070	0,980
23/05/2006	1,225	1,070	1,080	1,140	1,180	1,130	1,070	0,980
30/05/2006	1,255	1,100	1,110	1,170	1,210	1,160	1,100	1,010
06/06/2006	1,315	1,160	1,170	1,230	1,270	1,220	1,160	1,070
13/06/2006	1,365	1,210	1,220	1,280	1,320	1,270	1,210	1,120
20/06/2006	1,415	1,260	1,270	1,330	1,370	1,320	1,260	1,170
27/06/2006	1,415	1,260	1,270	1,330	1,370	1,320	1,260	1,170
04/07/2006	1,395	1,240	1,250	1,310	1,350	1,300	1,240	1,150
11/07/2006	1,355	1,200	1,210	1,270	1,310	1,260	1,200	1,110
18/07/2006	1,355	1,200	1,210	1,270	1,310	1,260	1,200	1,110
25/07/2006	1,435	1,260	1,270	1,330	1,370	1,320	1,260	1,170
01/08/2006	1,435	1,260	1,270	1,330	1,370	1,320	1,260	1,170
08/08/2006	1,435	1,260	1,270	1,330	1,370	1,320	1,260	1,170
22/08/2006	1,505	1,310	1,320	1,380	1,420	1,370	1,310	1,220
29/08/2006	1,505	1,330	1,340	1,380	1,420	1,370	1,310	1,220
05/09/2006	1,505	1,330	1,340	1,380	1,420	1,370	1,310	1,220
12/09/2006	1,505	1,330	1,340	1,380	1,420	1,370	1,310	1,220
19/09/2006	1,505	1,330	1,340	1,380	1,420	1,370	1,310	1,220
26/09/2006	1,505	1,330	1,340	1,380	1,420	1,370	1,310	1,220
03/10/2006	1,505	1,330	1,340	1,380	1,420	1,370	1,310	1,220
10/10/2006	1,455	1,280	1,290	1,330	1,370	1,320	1,260	1,190
17/10/2006	1,405	1,230	1,240	1,280	1,320	1,270	1,210	1,140
24/10/2006	1,405	1,230	1,240	1,280	1,320	1,270	1,210	1,140
07/11/2006	1,385	1,210	1,220	1,260	1,300	1,250	1,190	1,120
14/11/2006	1,365	1,190	1,200	1,240	1,280	1,230	1,170	1,100
21/11/2006	1,365	1,190	1,200	1,240	1,280	1,230	1,170	1,100
28/11/2006	1,365	1,190	1,200	1,240	1,280	1,230	1,170	1,100
05/12/2006	1,365	1,190	1,200	1,240	1,280	1,230	1,170	1,100
12/12/2006	1,335	1,160	1,170	1,210	1,250	1,200	1,140	1,070
19/12/2006	1,335	1,130	1,140	1,180	1,220	1,170	1,110	1,040
MEDIA	1,386	1,217	1,227	1,272	1,312	1,262	1,197	1,111

PERUGIA 2006
SUINI D'ALLEVAMENTO
 (Euro/Kg)



PERUGIA 2006
SUINI DA MACELLO
 (Euro/Kg)

